

MEDIAN DIMENSION CHART

B	C	D	E	F	G	H	I	J	K	L	M	N
12'	4.00'S	3.80'S	3.20'S	2.19'S	0.78'S	1.00'N	2.78'N	4.19'N	5.20'N	5.80'N	22.56'	1.00'
13'	3.50'S	3.30'S	2.70'S	1.69'S	0.28'S	1.50'N	3.28'N	4.69'N	5.70'N	6.30'N	23.56'	1.00'
14'	3.00'S	2.80'S	2.20'S	1.19'S	0.22'N	2.00'N	3.78'N	5.19'N	6.20'N	6.80'N	22.68'	2.50'
15'	2.50'S	2.30'S	1.70'S	0.69'S	0.72'N	2.50'N	4.28'N	5.69'N	6.70'N	7.30'N	23.71'	2.50'
16'	2.00'S	1.80'S	1.20'S	0.19'S	1.22'N	3.00'N	4.78'N	6.19'N	7.20'N	7.80'N	23.46'	3.50'
17'	1.50'S	1.30'S	0.70'S	0.31'N	1.72'N	3.50'N	5.28'N	6.69'N	7.70'N	8.30'N	24.48'	3.50'
18'	1.00'S	0.80'S	0.20'S	0.81'N	2.22'N	4.00'N	5.78'N	7.19'N	8.20'N	8.80'N	25.44'	3.50'
19'	0.50'S	0.30'S	0.30'S	1.31'N	2.72'N	4.50'N	6.28'N	7.69'N	8.70'N	9.30'N	26.34'	3.50'
20'	0.00'	0.20'N	0.80'N	1.81'N	3.22'N	5.00'N	6.78'N	8.19'N	9.20'N	9.80'N	26.72'	4.00'
21'	0.50'N	0.70'N	1.30'N	2.31'N	3.72'N	5.50'N	7.28'N	8.69'N	9.70'N	10.30'N	27.57'	4.00'
22'	1.00'N	1.20'N	1.80'N	2.81'N	4.22'N	6.00'N	7.78'N	9.19'N	10.20'N	10.80'N	28.39'	4.00'
23'	1.50'N	1.70'N	2.30'N	3.31'N	4.72'N	6.50'N	8.28'N	9.69'N	10.70'N	11.30'N	29.17'	4.00'
24'	2.00'N	2.30'N	2.80'N	3.81'N	5.22'N	7.00'N	8.78'N	10.19'N	11.20'N	11.80'N	29.92'	4.00'

N = NORTH OF CENTERLINE
S = SOUTH OF CENTERLINE

CURVE DATA C3 & C4 FOR 7'-A=14'

A	Δ	R	T	L	M	N
7'	18°22'52"	50'	8.09'	16.04'	16.45'	1.00'
8'	20°09'11"		8.89'	17.59'	17.88'	1.00'
9'	21°47'12"		9.62'	19.01'	19.19'	1.00'
10'	23°18'41"		10.31'	20.34'	20.39'	1.00'
11'	24°44'50"		10.97'	21.60'	21.51'	1.00'
12'	26°06'32"		11.59'	22.78'	22.56'	1.00'
13'	27°24'27"		12.19'	23.92'	23.57'	1.00'
14'	28°38'05"		12.77'	25.03'	24.56'	1.00'

CURVE DATA C1 C2
Δ = 11°28'40"
R = 250'
T = 25.13'
L = 50.08'

CURVE DATA C3 & C4 FOR 12'-B=24'

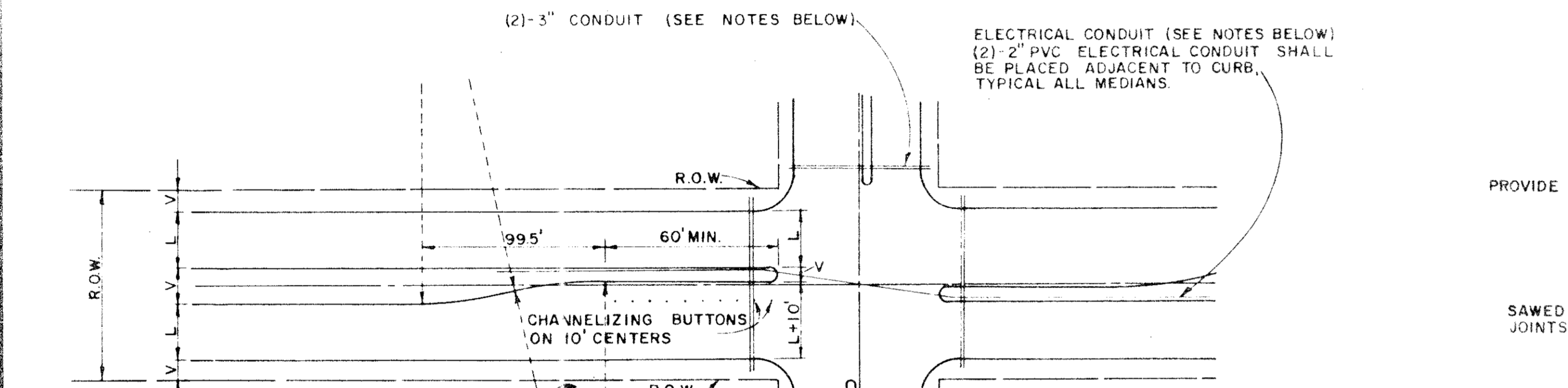
B	Δ	R	T	L
12'	26°06'32"	50.00'	11.59'	22.78'
13'	27°24'27"		12.19'	23.92'
14'	28°38'05"		12.77'	25.03'
15'	29°48'51"		13.33'	25.68'
16'	30°56'53"		13.87'	26.30'
17'	32°02'26"		14.39'	26.90'
18'	33°06'05"		14.90'	27.48'
19'	34°08'05"		15.43'	28.03'

CURVE DATA C5 FOR 12'-B=24'

B	Δ	R	T	L
12'	27°47'32"	100'	2.04'	2.23'
13'	125°12'46"	100'	1.93'	2.19'
14'	129°43'08"	2.50'	5.33'	5.66'
15'	126°57'31"	2.50'	5.01'	5.54'
16'	129°09'33"	3.50'	7.36'	7.89'
17'	126°21'44"	3.50'	6.92'	7.72'
18'	123°41'38"	3.50'	6.54'	7.56'
19'	120°52'03"	3.50'	6.17'	7.38'
20'	120°48'56"	4.00'	7.04'	8.43'
21'	118°21'08"	4.00'	6.70'	8.26'
22'	115°57'07"	4.00'	6.40'	8.10'
23'	113°38'22"	4.00'	6.12'	7.93'
24'	111°23'48"	4.00'	5.86'	7.78'

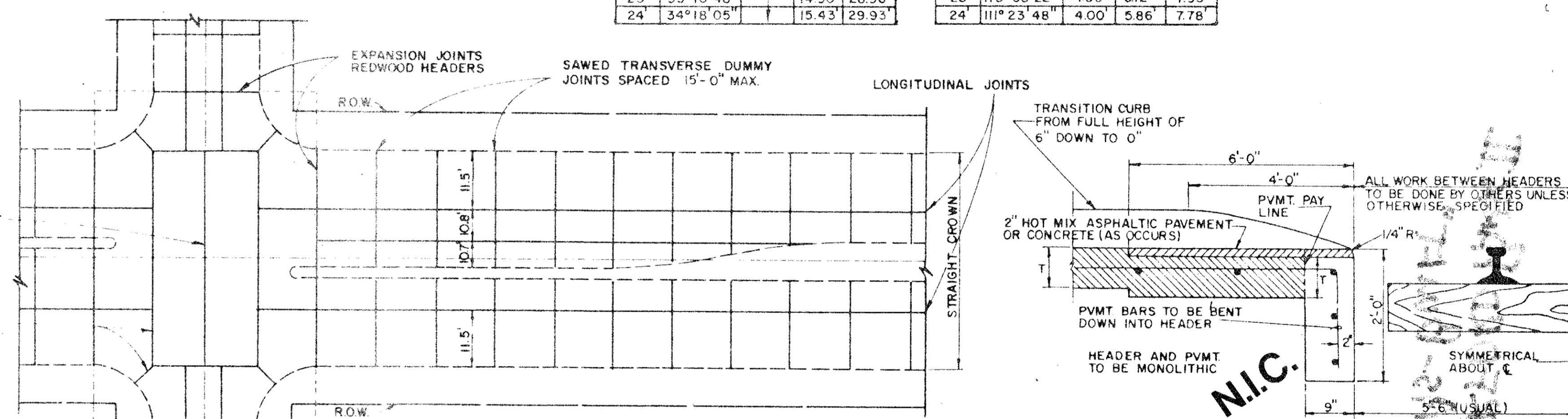
CURVE DATA C5 FOR 7'-A=14'

A	Δ	R	T	L
7'	143°14'15"	100'	2.04'	2.50'
8'	139°41'38"	100'	2.22'	2.44'
9'	136°25'35"	100'	2.40'	2.38'
10'	133°22'38"	100'	2.32'	2.33'
11'	130°30'20"	100'	2.17'	2.28'
12'	127°47'32"	100'	2.04'	2.23'
13'	125°12'46"	100'	1.93'	2.19'
14'	123°18'41"	2.50'	5.33'	5.66'

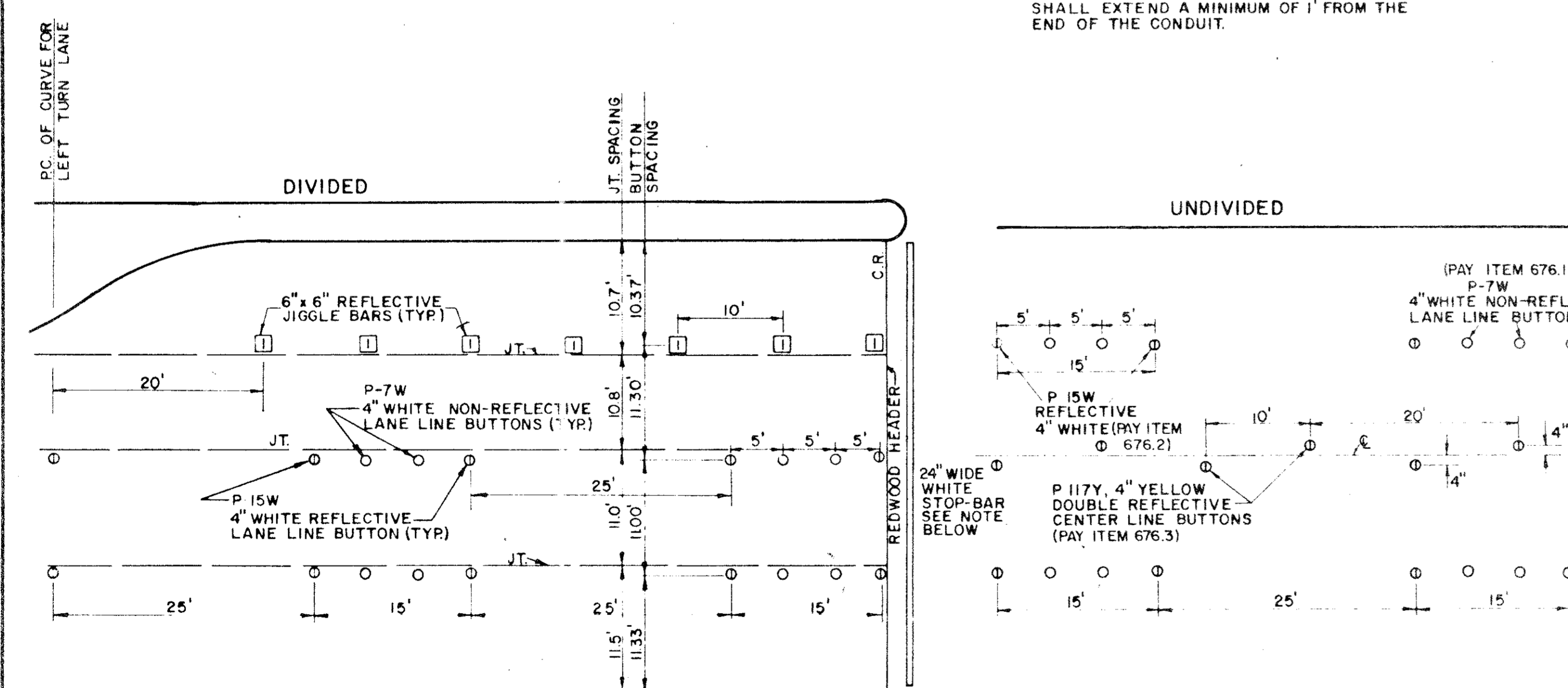


CONDUIT
FOR EXACT LOCATIONS, THIS PROJECT-SEE PLANS

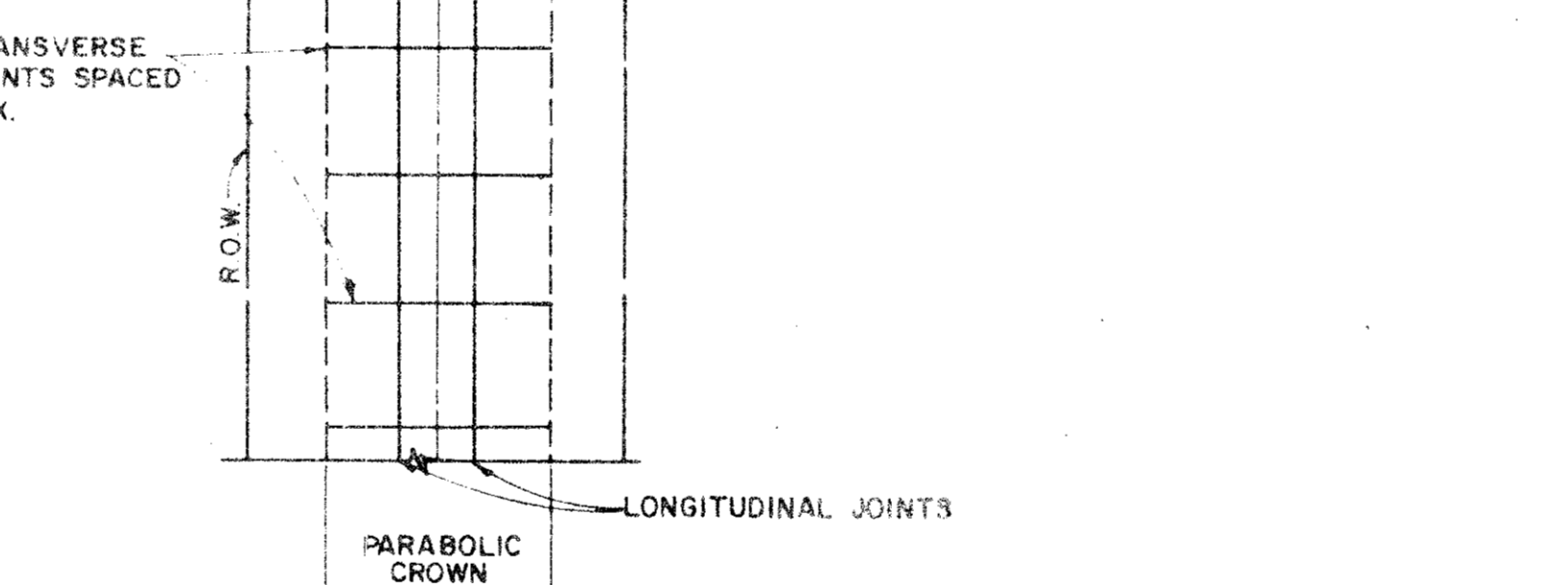
- NOTES:
1. 3" PVC TO BE INSTALLED CONTINUOUS ACROSS INTERSECTION, EXTENDING TO 2' BEHIND CURBS, TERMINATING IN PULL BOX AT ENDS OF THE CONDUIT.
2. RED MARKER TAPE IS TO BE INSTALLED ON THE ENDS OF THE CONDUIT.
3. THE EXACT LOCATIONS WHERE THE CONDUIT CROSSES UNDER THE PAVING ARE TO BE CHISELED WITH AN "X" AND PAINTED WITH RED PAINT, ON THE CURB OR PAVING.
4. A NYLON CORD SHALL BE PLACED IN ALL CONDUIT UNDER PAVEMENT. THIS CORD SHALL EXTEND A MINIMUM OF 1' FROM THE END OF THE CONDUIT.



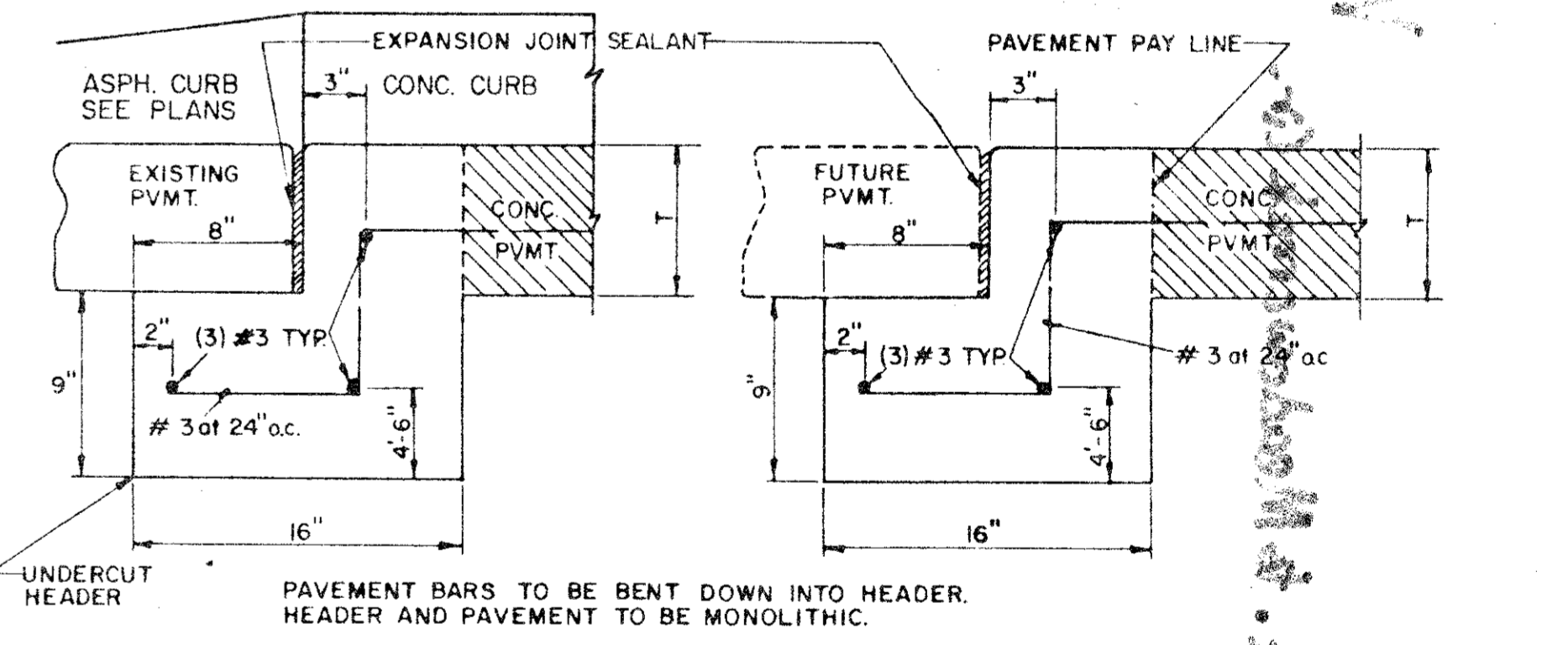
RAIL HEADER



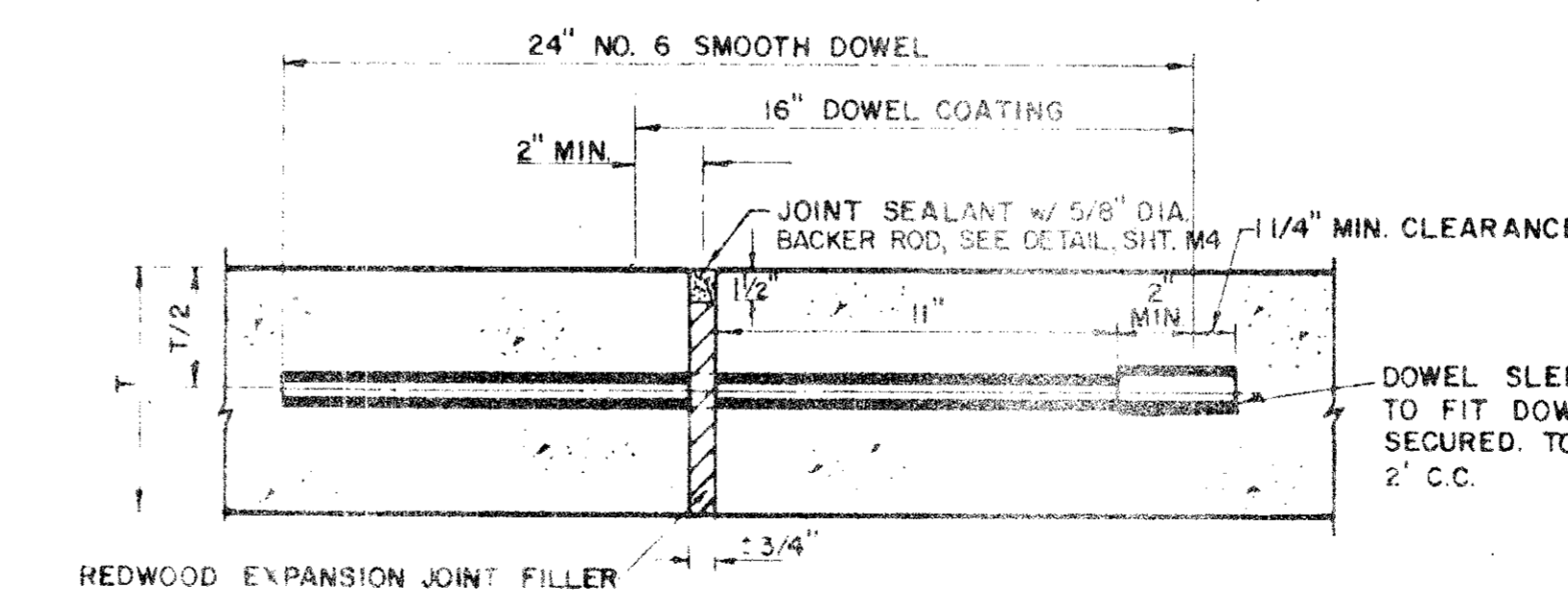
BUTTON DETAILS



SPACING DIAGRAM FOR TRANSVERSE JOINTS

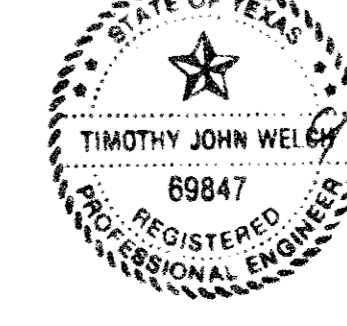
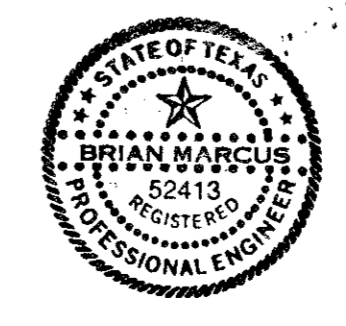


STREET HEADER



TRANSVERSE EXPANSION JOINT
(SPACED 600 FT MAXIMUM, LOCATE AT INTERSECTIONS)

NOTE: DOWELS AND REINFORCING BARS SHALL BE SUPPORTED BY AN APPROVED DEVICE.



TOWN OF ADDISON, TEXAS
DEPARTMENT OF ENGINEERING

STANDARD CONSTRUCTION DETAILS PAVING

TURN LANES & JOINTS

Designed - Drawn - Date - AUGUST, 1991 Job No. - 98025 6
Approved - Checked - Scale - Sheet 13 of 14