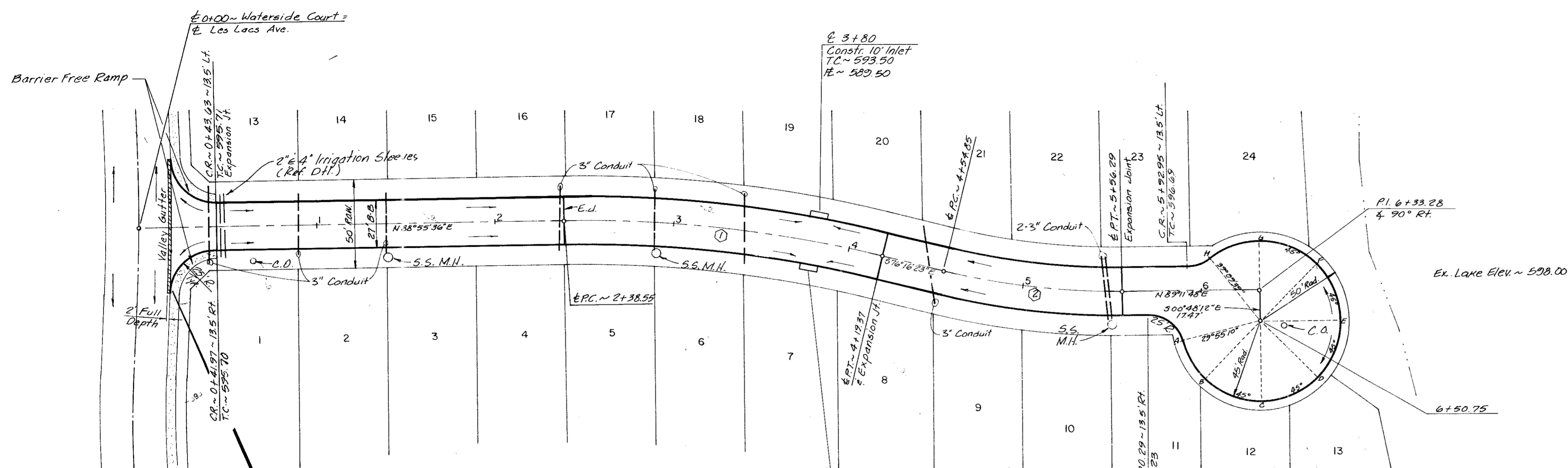
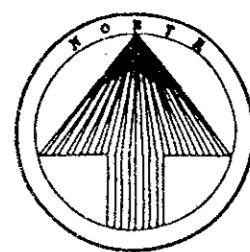


Revision	Date	Description	Drawn By	Checked By



LES LACS AVE.

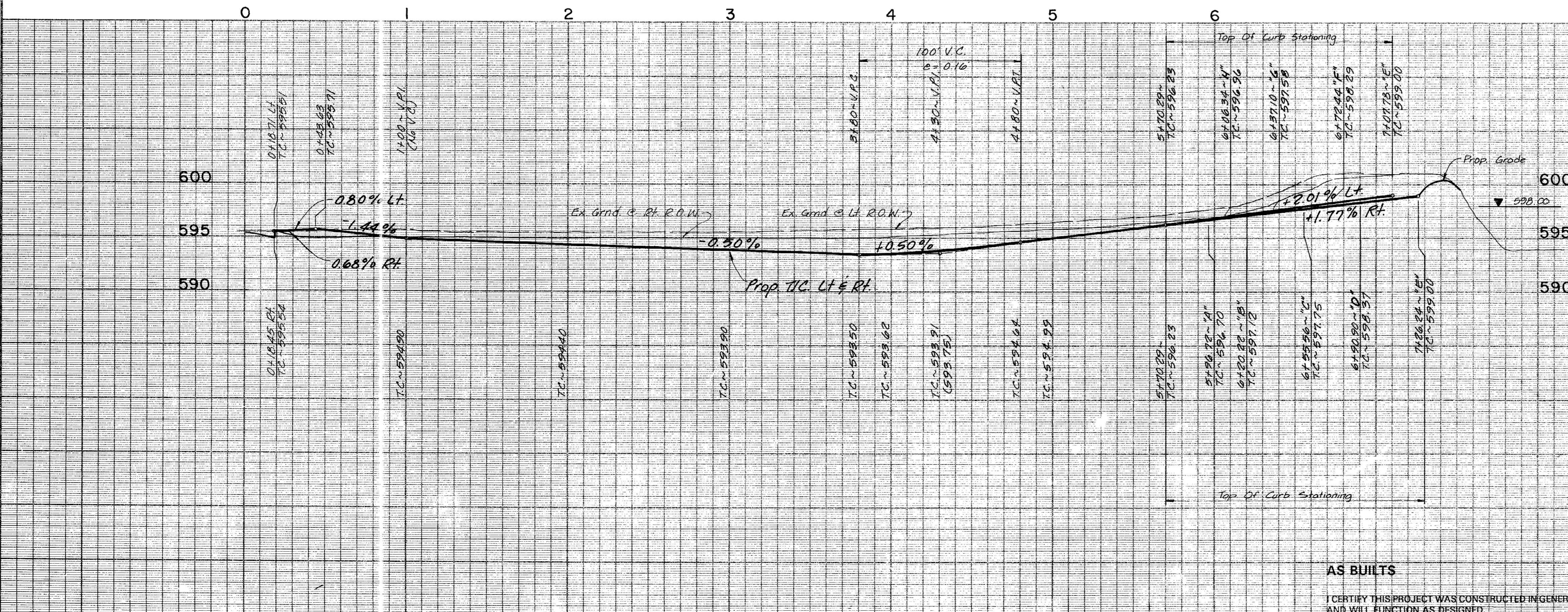
Sawcut & Remove Exist. Conc. Curb & Gutter. Replace w/ Reint. Conc. Pmnt.
5-Foot Sidewalks along Les Lacs Avenue to be constructed by Developer.

WATERSIDE COURT

⊕ CURVE DATA

#	A	R	T	L
①	14° 48' 01"	700.00'	90.92'	180.82'
②	14° 31' 49"	400.00'	50.99'	101.44'

- BENCHMARKS**
- Cut in the northwest corner of inlet southside of Proton Drive at west of Les Lacs Drive. ELEV. 607.35
 - Cut on the north top of curb of Les Lacs Drive at Southeast Addition Corner. ELEV. 593.38
 - Center of second inlet west of the East Addition Line and on the north side of Les Lacs. ELEV. 586.17
 - In center of the third inlet west of the East Addition Line on the north side of Les Lacs Drive. ELEV. 587.61
 - In center of the first inlet south of Beltway Drive and on the east side of Les Lacs Drive. ELEV. 589.88



AS BUILT
I CERTIFY THIS PROJECT WAS CONSTRUCTED IN GENERAL CONFORMANCE WITH THESE CONSTRUCTION PLANS AND WILL FUNCTION AS DESIGNED.

PAVING PLAN & PROFILE
WATERFORD PARK II
 TOWN OF ADDISON, TEXAS
 THE NELSON CORPORATION
 LAND PLANNING • ENGINEERING • SURVEYING
 5999 SUMMERSIDE DRIVE • SUITE 202 • DALLAS, TEXAS 75252 • (214) 390-2605
 DESIGN: TNC DRAWN: TNC DATE: NOV. 1991 SCALE: 1"=40'H 1"=6'V FILE: 90025-6 SHEET NO.: P-3