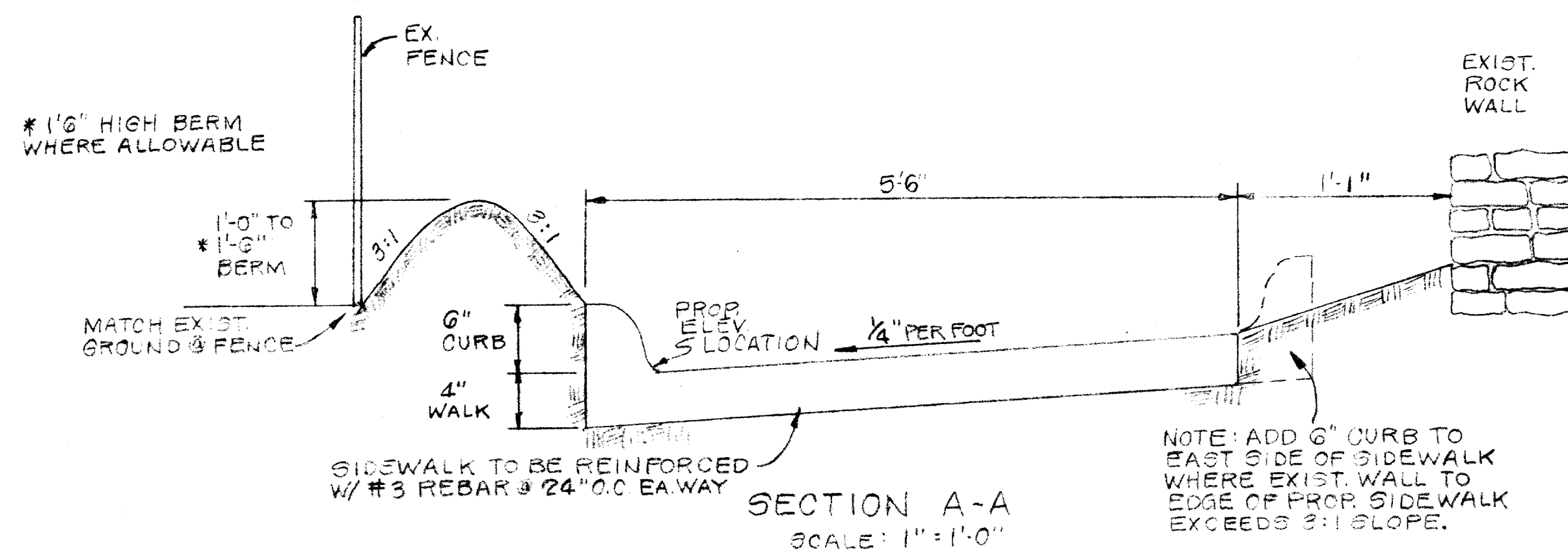
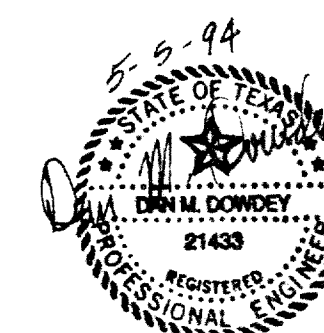


- CONSTRUCTION NOTES
1. REMOVE EXIST. SIDEWALK TO EXPANSION JOINT @ STA. 2193± TO STA. 2150. MATCH EXIST SIDEWALK @ STA. 2193±.
 2. CONST. NEW SIDEWALK ON 1.00% GRADE FROM STA. 0+25 TO STA. 2150. MATCH EXIST SIDEWALK @ STA. 2193±.
 3. FULL 6" CURB FROM END OF FENCE @ 0+07 TO 2150. TRANSITION FROM FULL 6" CURB TO NO CURB IN 5' @ BOTH ENDS.
 4. INSTALL 1'-0" TO 1'-6" HIGH EARTH BERM FROM 0+07 TO 3+25.
 5. ADJUST 2 IRRIGATION VALVE BOXES AS REQUIRED.
 6. SOO BERM AND ANY DISTURBED AREAS.
 7. ADJUST ALL SPRINKLER HEADS & CONTROL BOXES. TEST EXISTING SPRINKLER SYSTEM & MARK WITH PIN FLAGS PRIOR TO CONSTRUCTION.
 8. TOOLED CONSTRUCTION JOINTS SHALL BE AT 5'-0" SPACING. EXPANSION JOINTS SHALL BE AT 40'-0" SPACING.



THE INTENT OF THIS PLAN IS TO MINIMIZE AN EXISTING DRAINAGE PROBLEM. THIS DESIGN DOES NOT ALLEVIATE THE ORIGINAL INTENT OF THE ENGINEER OF RECORD FOR THE DEVELOPMENT.

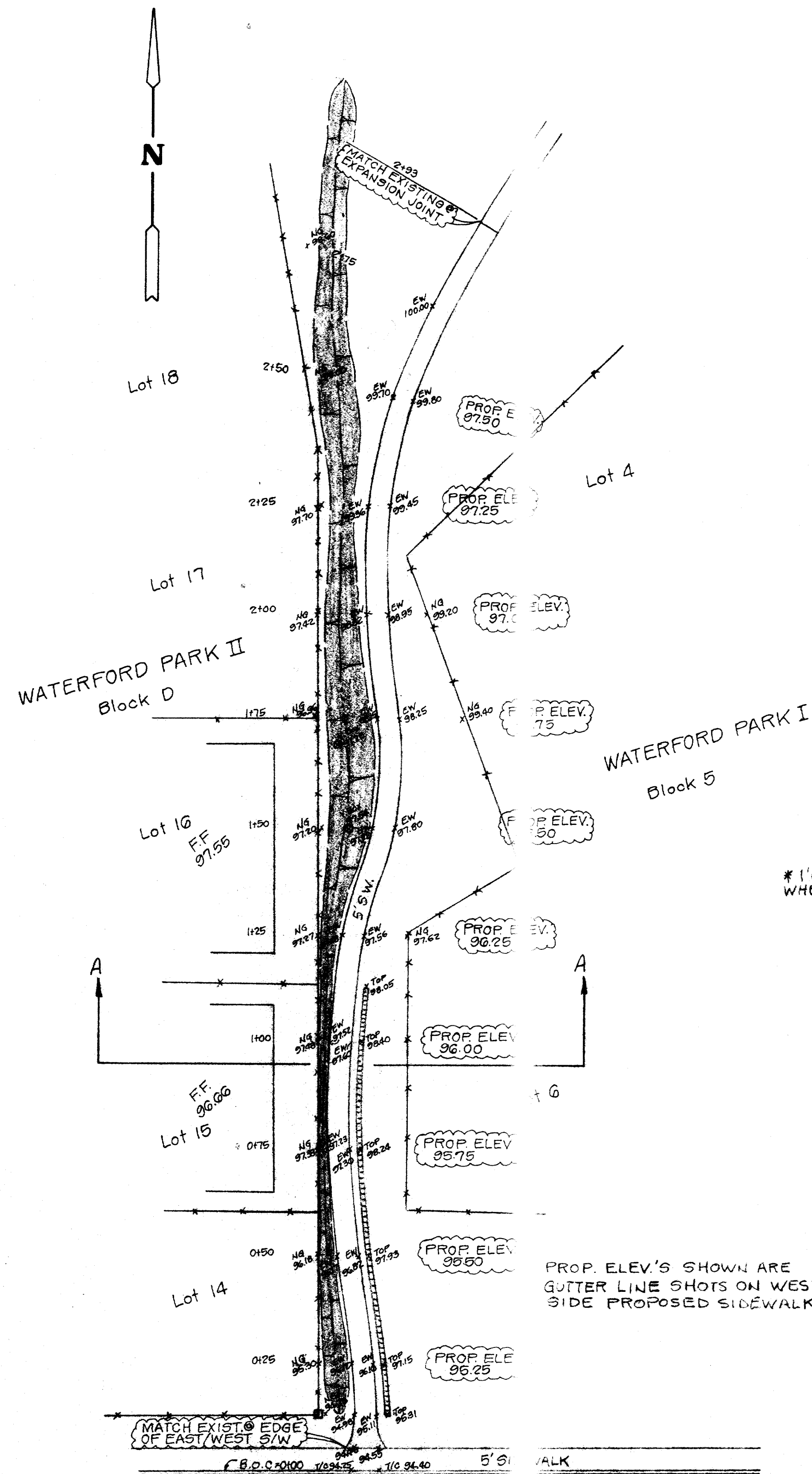
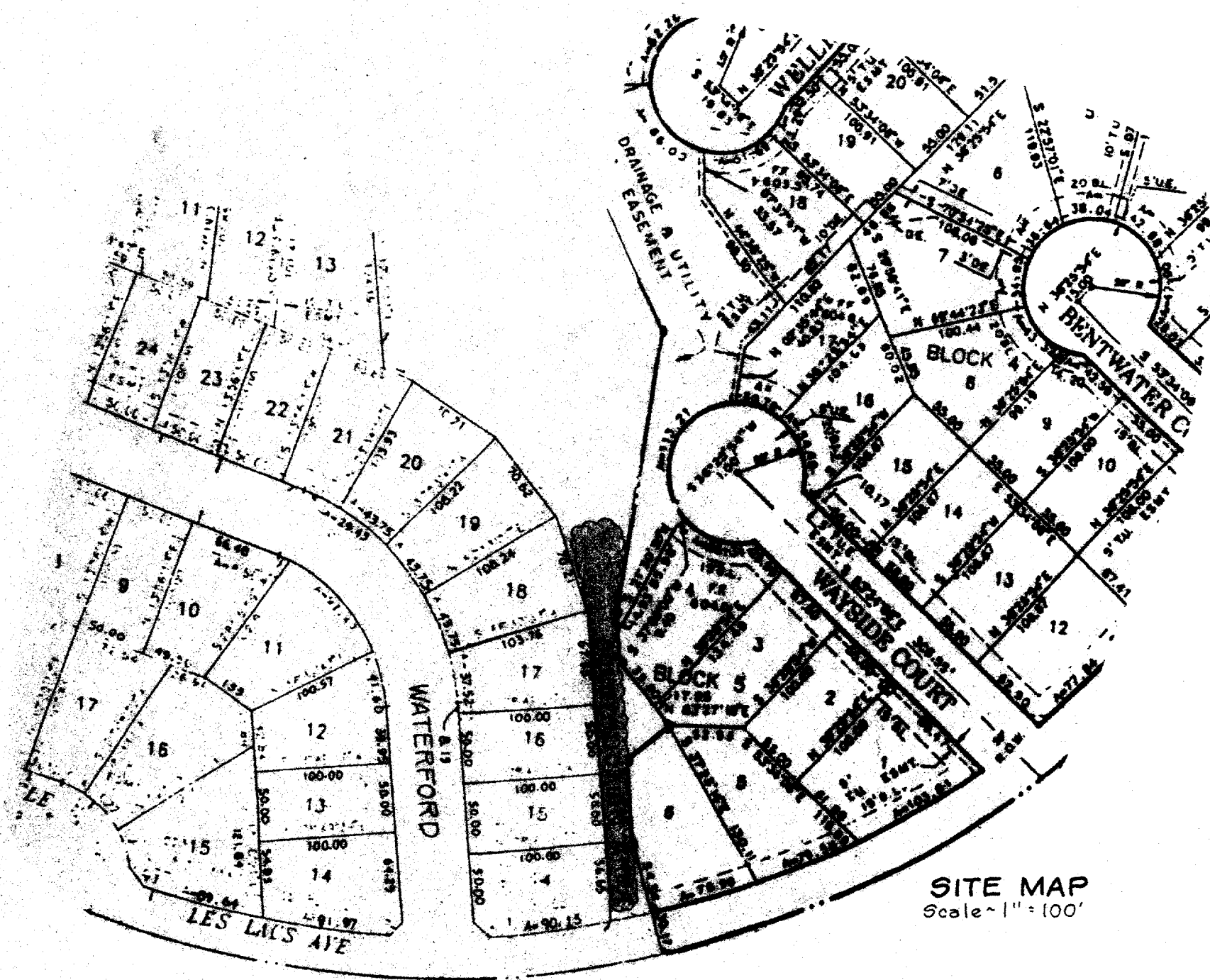
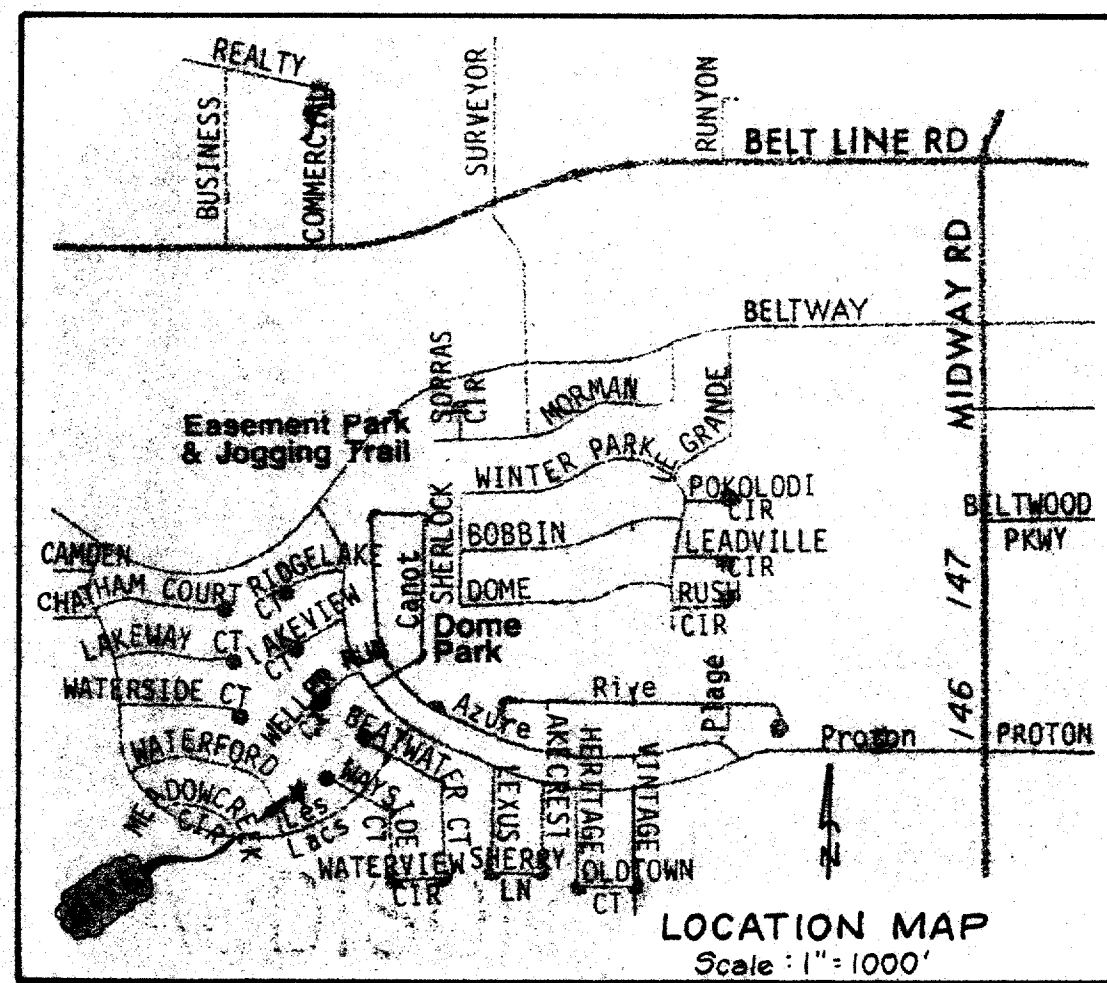


DRAINAGE IMPROVEMENT PLAN
WATERFORD PARK II
TOWN OF ADDISON
DALLAS COUNTY, TEXAS

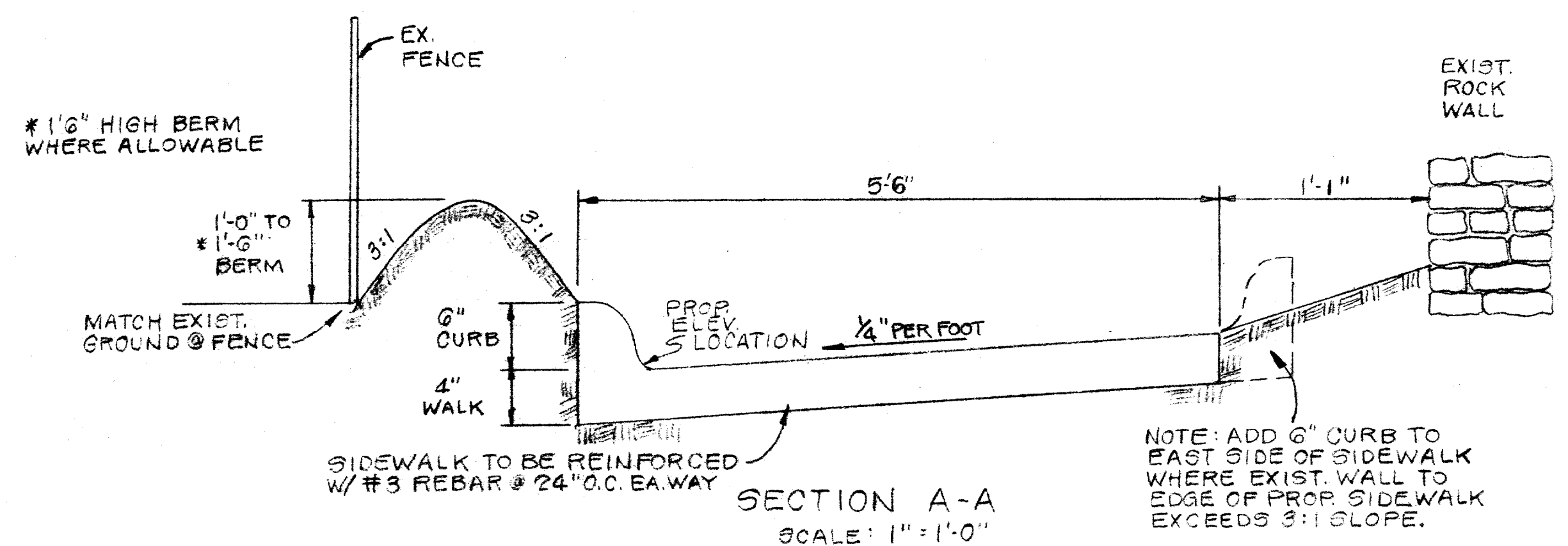
DOWDEY, ANDERSON & ASSOCIATES, INC.
6250 DALLAS PKWY. (214) 931-0694 DALLAS, TEXAS

NO.	DATE	BY	REVISION

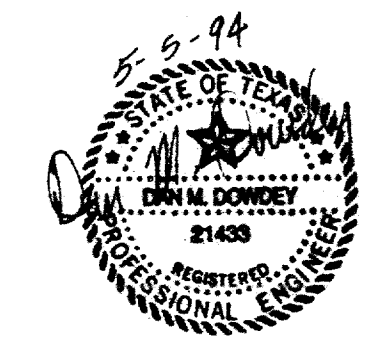
DESIGN	DRAWN	CHECKED	DATE	SCALE	JOB	SHEET
W.A.A.	L.D.B.	W.A.A.	5-2-94	NOTED	93-066	1



- CONSTRUCTION NOTES**
1. REMOVE EXIST. SIDEWALK TO EXPANSION JOINT @ STA. 2193±
 2. CONST. NEW SIDEWALK ON 1.00% GRADE FROM STA. 0+25 TO STA. 2150. MATCH EXIST SIDEWALK @ STA. 2193±
 3. FULL 6" CURB FROM END OF FENCE @ 0+07 TO 2150. TRANSITION FROM FULL 6" CURB TO NO CURB IN 5' @ BOTH ENDS.
 4. INSTALL 1'-0" TO 1'-6" HIGH EARTH BERM FROM 0+07 TO 3+25
 5. ADJUST 2 IRRIGATION VALVE BOXES AS REQUIRED.
 6. SOO BERM AND ANY DISTURBED AREAS.
 7. ADJUST ALL SPRINKLER HEADS & CONTROL BOXES. TEST EXISTING SPRINKLER SYSTEM & MARK WITH PIN FLAGS PRIOR TO CONSTRUCTION.
 8. TOOLED CONSTRUCTION JOINTS SHALL BE AT 5'-0" SPACING. EXPANSION JOINTS SHALL BE AT 40'-0" SPACING.



THE INTENT OF THIS PLAN IS TO MINIMIZE AN EXISTING DRAINAGE PROBLEM. THIS DESIGN DOES NOT ALLEVIATE THE ORIGINAL INTENT OF THE ENGINEER OF RECORD FOR THE DEVELOPMENT.



DRAINAGE IMPROVEMENT PLAN
WATERFORD PARK II
TOWN OF ADDISON
DALLAS COUNTY, TEXAS

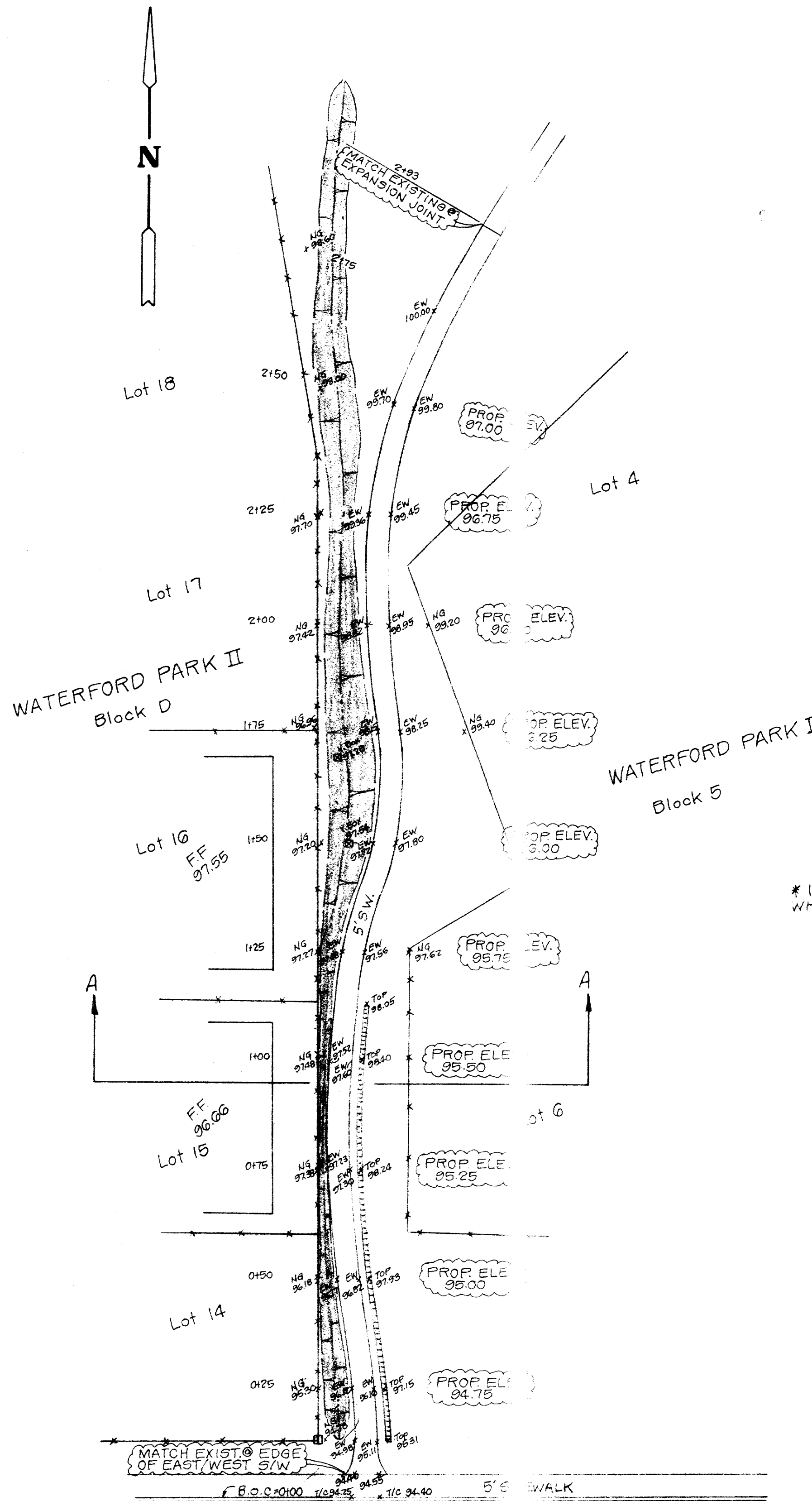
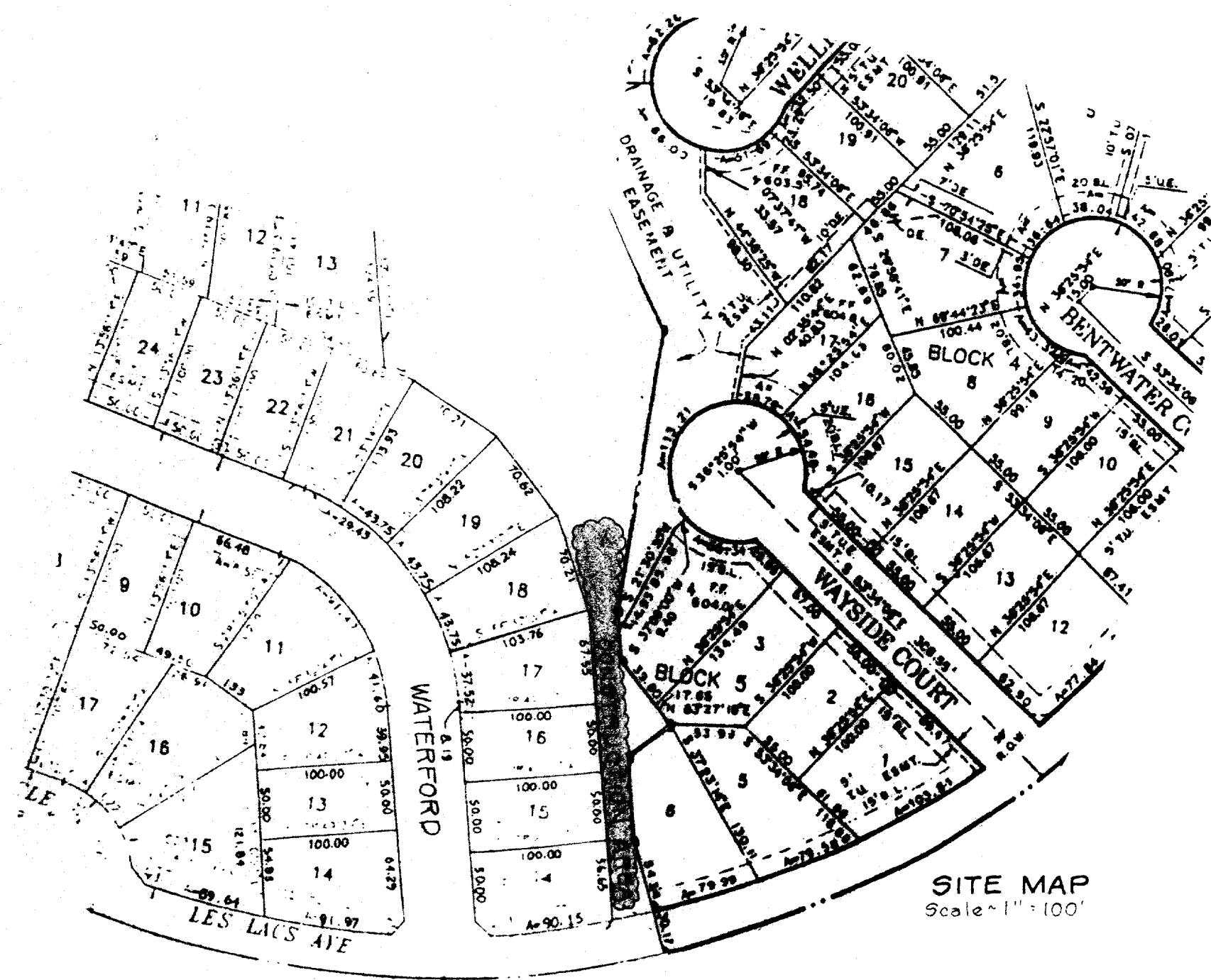
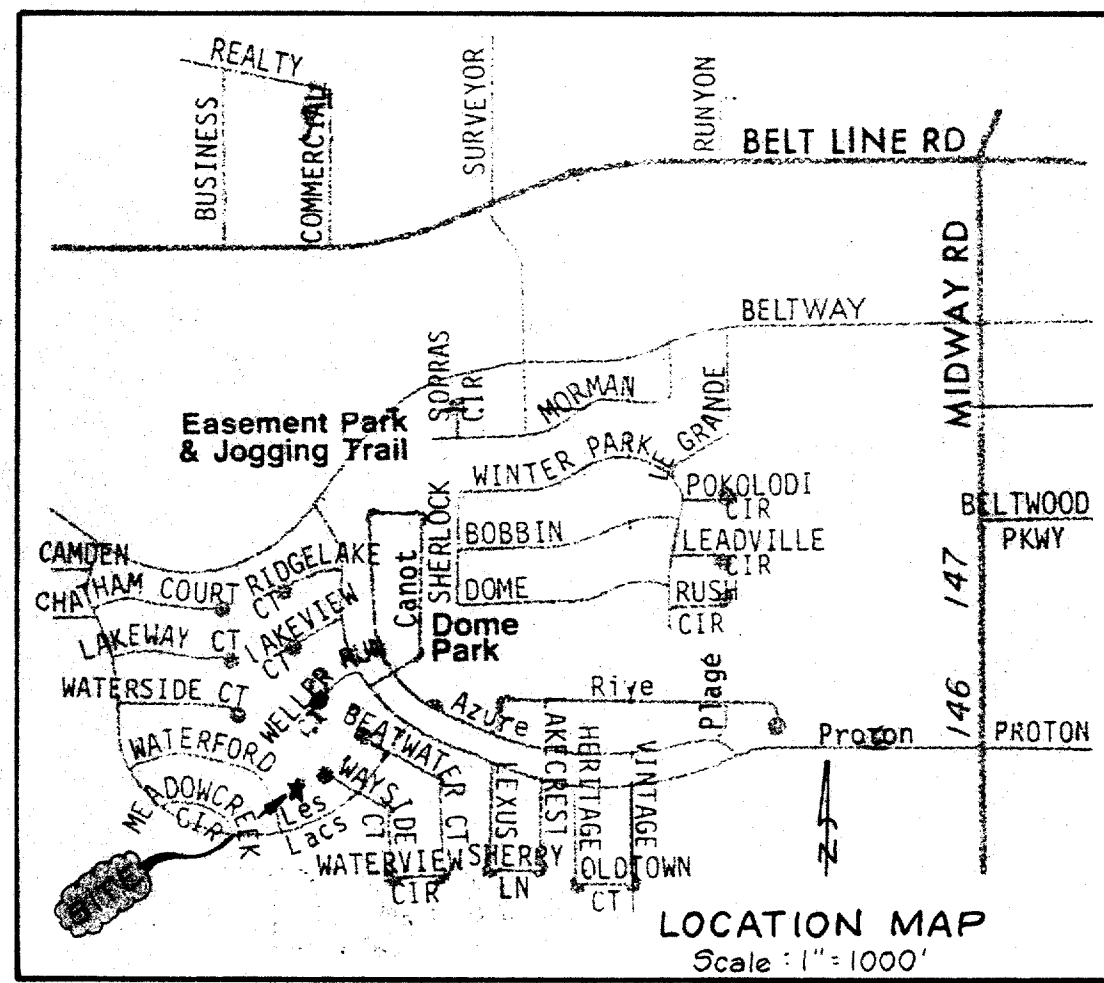
DOWDEY, ANDERSON & ASSOCIATES, INC.
 16250 DALLAS PKWY. (214) 931-0694 DALLAS, TEXAS

NO.	DATE	BY	REVISION

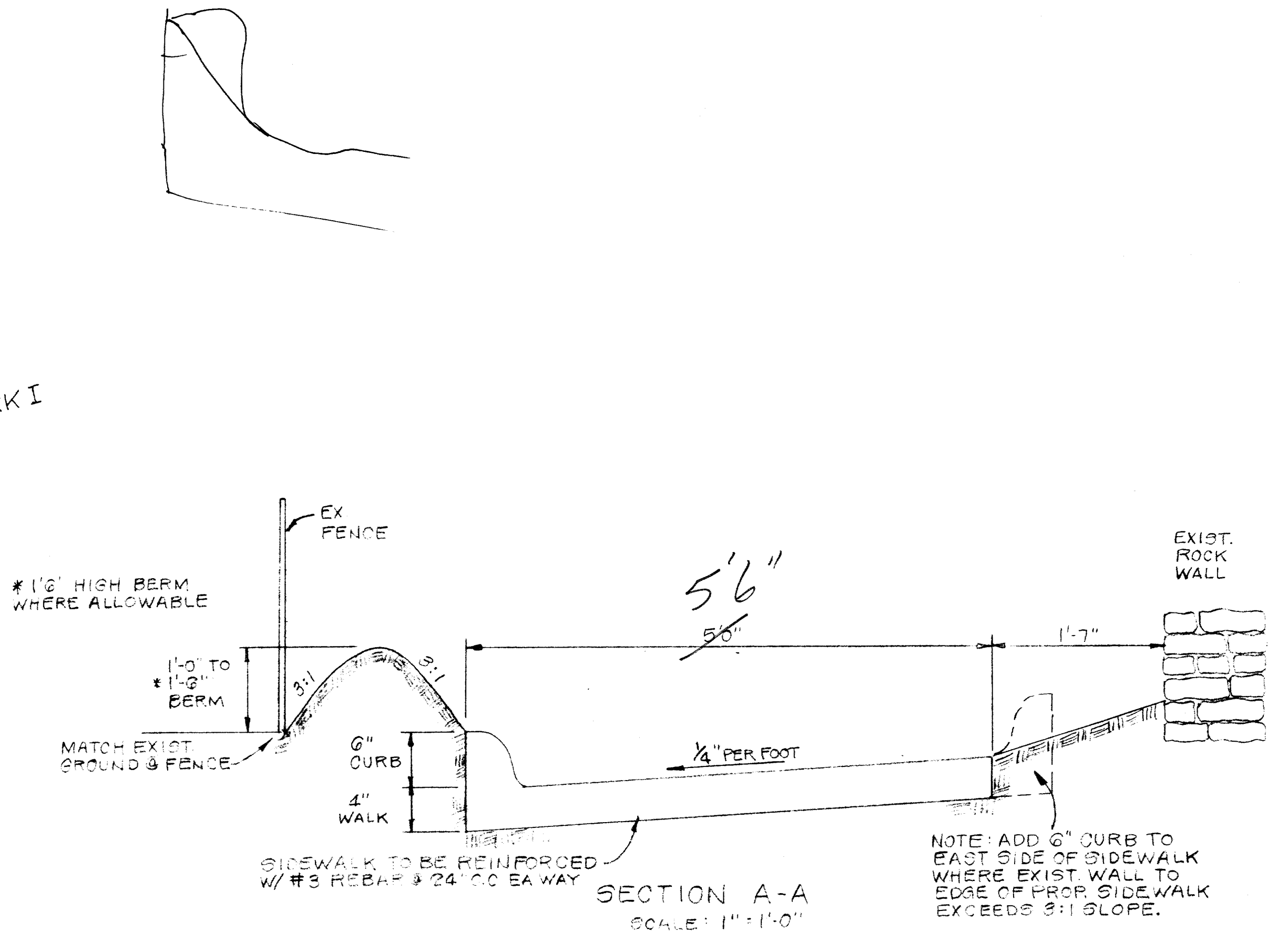
DESIGN	DRAWN	CHECKED	DATE	SCALE	JOB	SHEET
W.A.A.	L.D.B.	W.A.A.	5-2-94	NOTED	93-066	1/1

NO.	DATE	BY	REVISION

1"=20'
(H.I.=100.00)



- CONSTRUCTION NOTES
1. REMOVE EXIST. SIDEWALK TO EXPANSION JOINT @ STA. 2+93.1
 2. CONST. NEW SIDEWALK ON 1.00% GRADE FROM 0+05 (EDGE OF EXIST. EAST/WEST WALK) TO 2+50. MATCH EXIST. @ 2+93.1.
 3. FULL 6" CURB FROM END OF FENCE @ 0+07 TO 2+50. TRANSITION FROM FULL 6" CURB TO NO CURB IN 5'.
 4. INSTALL 1'-0" TO 1'-6" HIGH EARTH BERM FROM 0+07 TO 3+25
 5. ADJUST 2 IRRIGATION VALVE BOXES AS REQUIRED.
 6. SOO BERM AND ANY DISTURBED AREAS.
 7. ADJUST ALL SPRINKLER HEADS & CONTROL BOXES. TEST EXISTING SPRINKLER SYSTEM & MARK WITH PIN FLAGS PRIOR TO CONSTRUCTION.



1"=20'
(H.I.=100.00)

NO.	DATE	BY	REVISION

DRAINAGE IMPROVEMENT PLAN
WATERFORD PARK II
TOWN OF ADDISON
DALLAS COUNTY, TEXAS

DOWDEY, ANDERSON & ASSOCIATES, INC.
 16250 DALLAS PKWY (214) 931-0694 DALLAS, TEXAS

DESIGN	DRAWN	CHECKED	DATE	SCALE	JOB	SHEET
W.A.A.	L.D.B.	W.A.A.	5-2-94	NOTED	93-066	1