

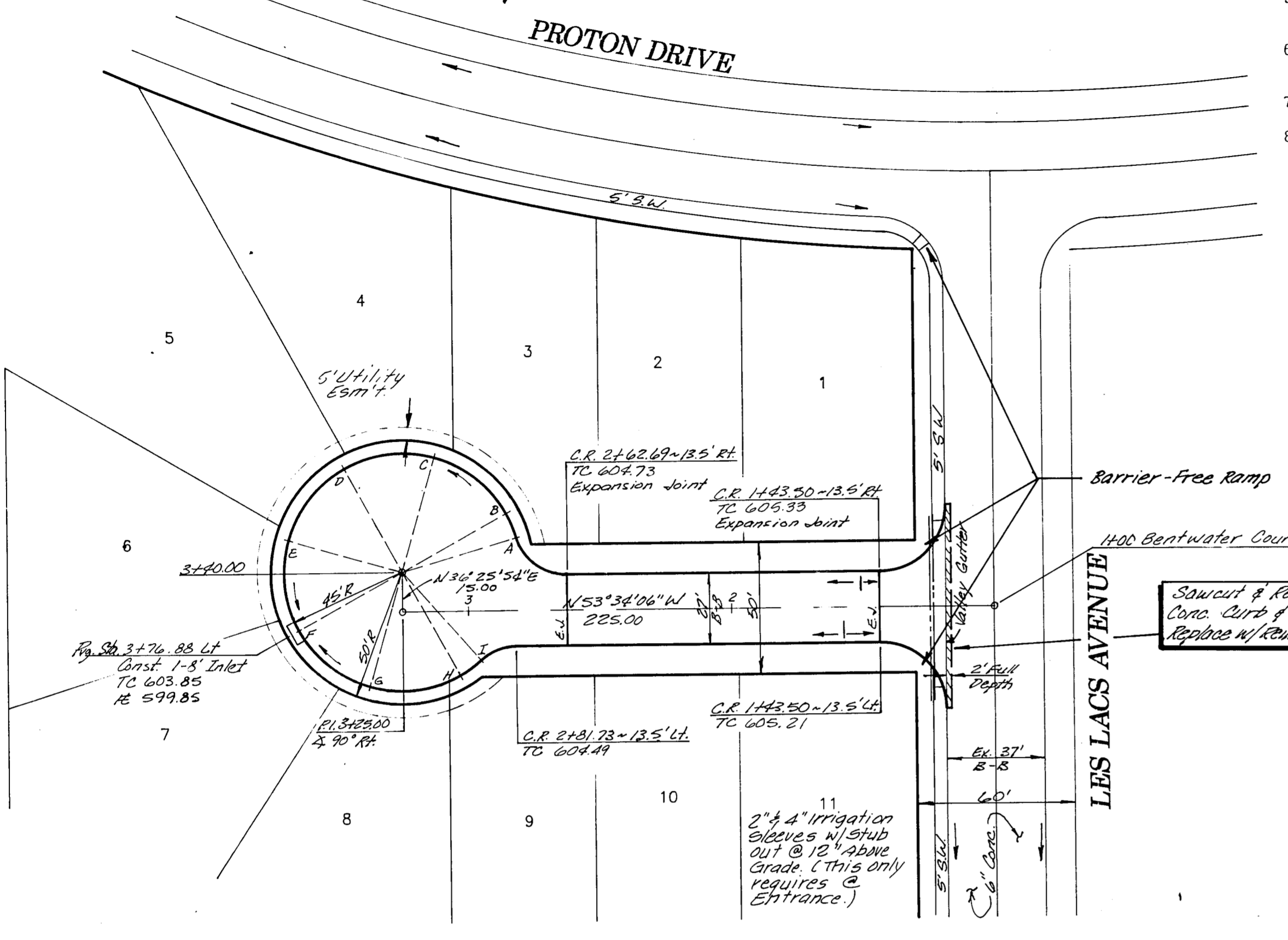
Revisions	Date	Description	Drawn By	Checked By

PAVING GENERAL NOTES:

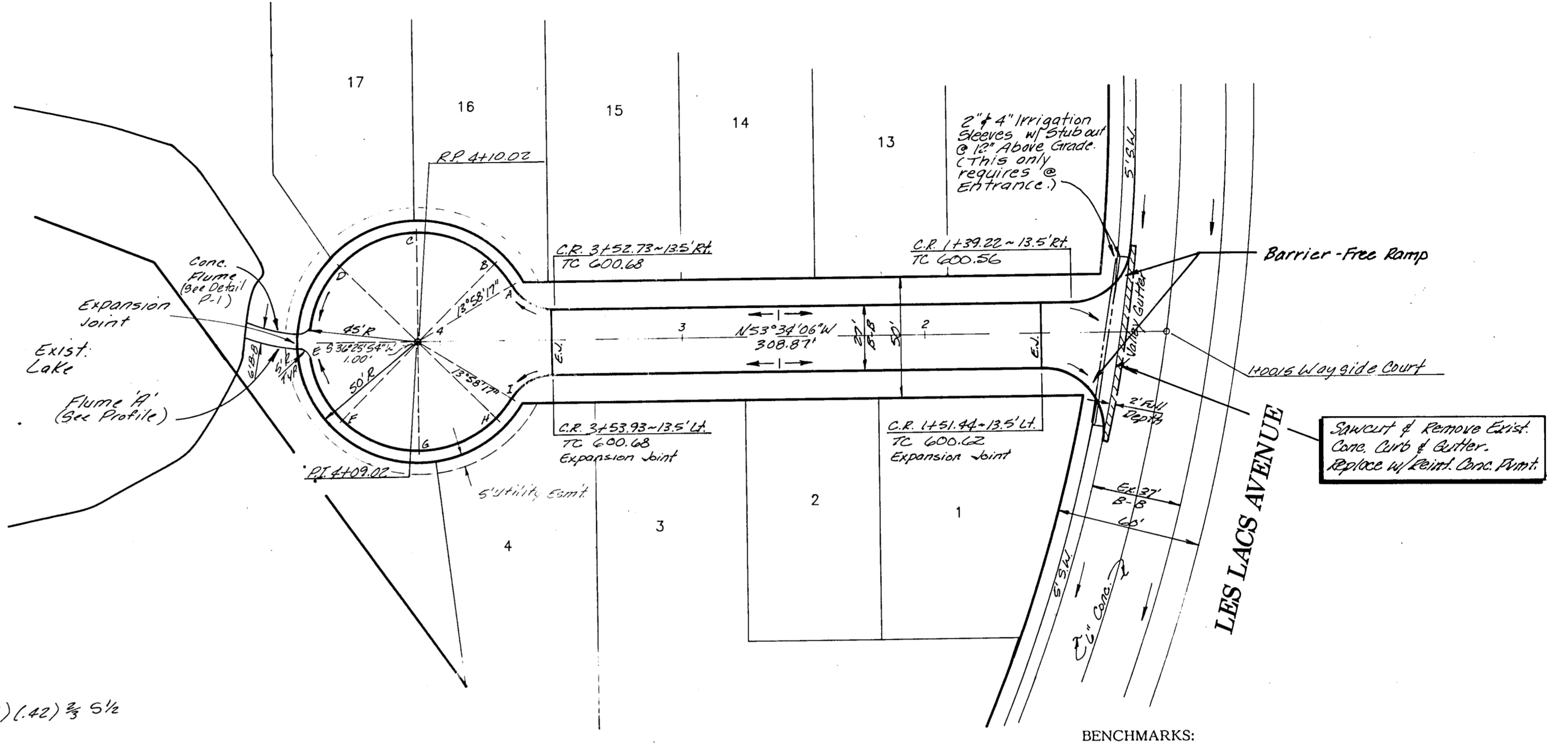
- Unless otherwise noted all material and construction shall conform to applicable specifications of the Town of Addison with amendments - The North Central Texas Council of Governments "Standard Specifications for Public Works Construction", Parts I and II, latest edition.
- All curb dimensions are to back of curb.
- Pavement reinforcing will be grade 60.
- All on-site concrete pavement will be 6" thick and have a minimum strength of 3000 PSI at 28 days.
- Construct a barrier-free curb and ramp at all intersections. See Sheet P-3 for details.
- The Contractor will be responsible for field verifying the location of all existing utilities prior to his operations.
- Hydrated lime will be applied as a slurry.
- No flyash is allowed.

PAVING GENERAL NOTES:

- Contraction Joints:** Transverse contraction joints shall be sawed joints perpendicular to the centerline and surface of the pavement. Where sawed joints are used, contraction joints at 20-foot intervals shall be sawed as soon as sawing can be accomplished without damage to the pavement.
- Expansion Joints:** Transverse expansion joints shall be formed perpendicular to the centerline and surface of the pavement and shall be constructed as shown on the plans.

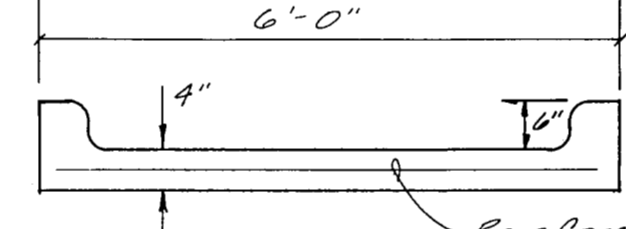


BENTWATER COURT



WAYSIDE COURT

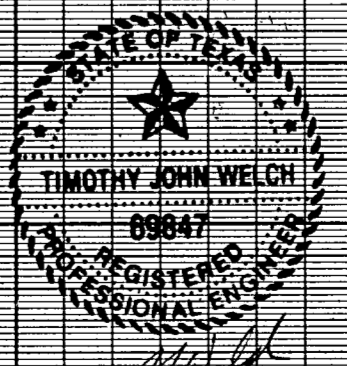
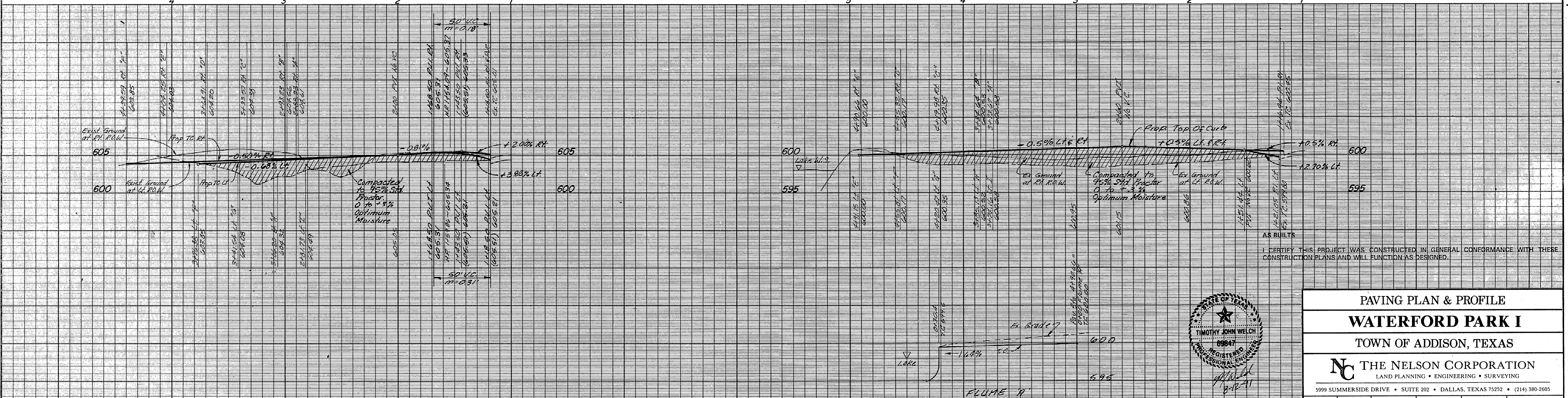
$Q_{cap} = \frac{1.486}{.016} (2.5)(.42) \frac{2}{3} 5\frac{1}{2}$
 $Q_{cap} = 130.5\frac{1}{2}$



CONC. FLUME / SIDEWALK
N.T.S.

BENCHMARKS:

- Square cut on 14' recessed inlet on north curb line at the intersection of Beltway Drive and Proton Drive. Elev. 596.53
- Square cut on top of inlet at northwest corner of Proton Drive and Les Lacs Avenue. Elev. 607.35
- "X" cut in centerline of Les Lacs Avenue, 250' ± west of Proton Drive. Elev. 601.88



PAVING PLAN & PROFILE

WATERFORD PARK I

TOWN OF ADDISON, TEXAS

THE NELSON CORPORATION
LAND PLANNING • ENGINEERING • SURVEYING

5999 SUMMERSIDE DRIVE • SUITE 202 • DALLAS, TEXAS 75252 • (214) 380-2605

DESIGN	DRAWN	DATE	SCALE	FILE	SHEET NO.
TNC	TNC	AUG. 1991	1"=40' 1"=6"V	90025-5	P-1