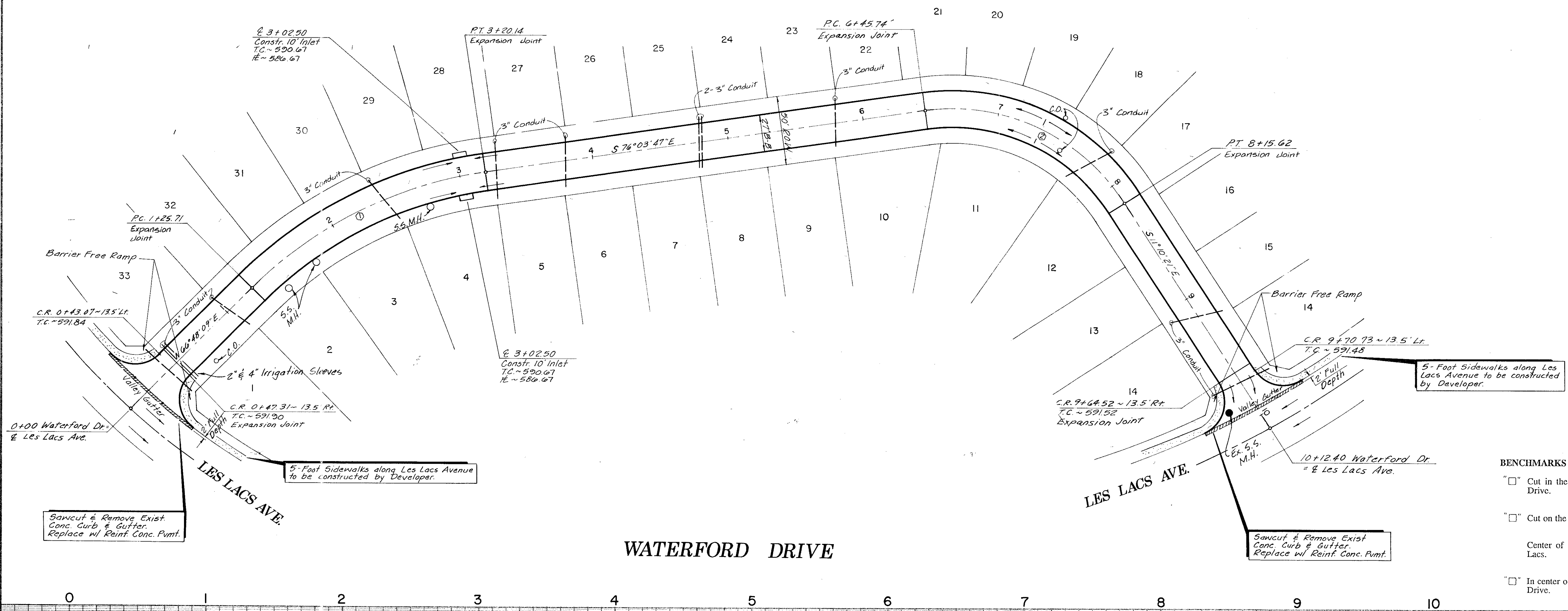


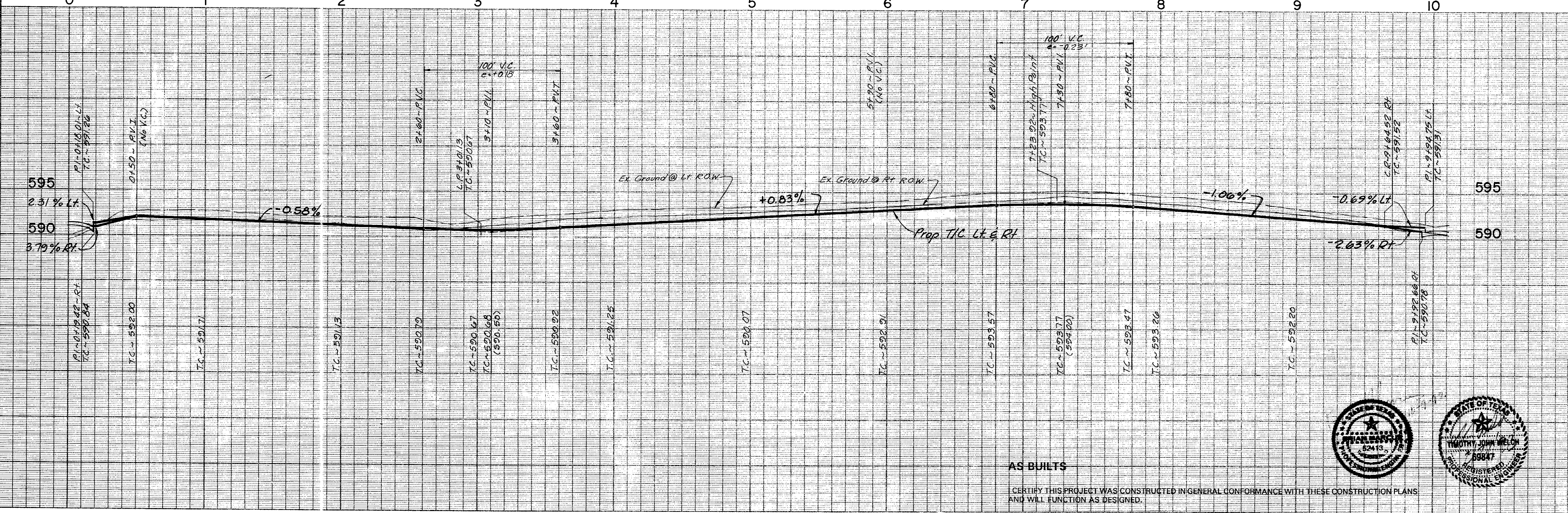
Revisions	Date	Description	Drawn By	Checked By



② CURVE DATA

#	A	R	T	L
①	37°08'03"	300.00'	100.77'	194.43'
②	64°53'26"	150.00'	95.36'	109.88'

- BENCHMARKS**
- Cut in the northwest corner of inlet southside of Proton Drive at west of Les Lacs Drive. ELEV. 607.35
 - Cut on the north top of curb of Les Lacs Drive at Southeast Addition Corner. ELEV. 593.38
 - Center of second inlet west of the East Addition Line and on the north side of Les Lacs. ELEV. 586.17
 - In center of the third inlet west of the East Addition Line on the north side of Les Lacs Drive. ELEV. 587.61



AS BUILTS

CERTIFY THIS PROJECT WAS CONSTRUCTED IN GENERAL CONFORMANCE WITH THESE CONSTRUCTION PLANS AND WILL FUNCTION AS DESIGNED.



PAVING PLAN & PROFILE
WATERFORD PARK II
 TOWN OF ADDISON, TEXAS

NC THE NELSON CORPORATION
 LAND PLANNING • ENGINEERING • SURVEYING

5999 SUMMERSIDE DRIVE • SUITE 202 • DALLAS, TEXAS 75252 • (214) 380-2505

DESIGN	DRAWN	DATE	SCALE	FILE	SHEET NO.
TNC	TNC	NOV. 1991	1"=40'H 1"=6'V	90025 - 6	P - 4