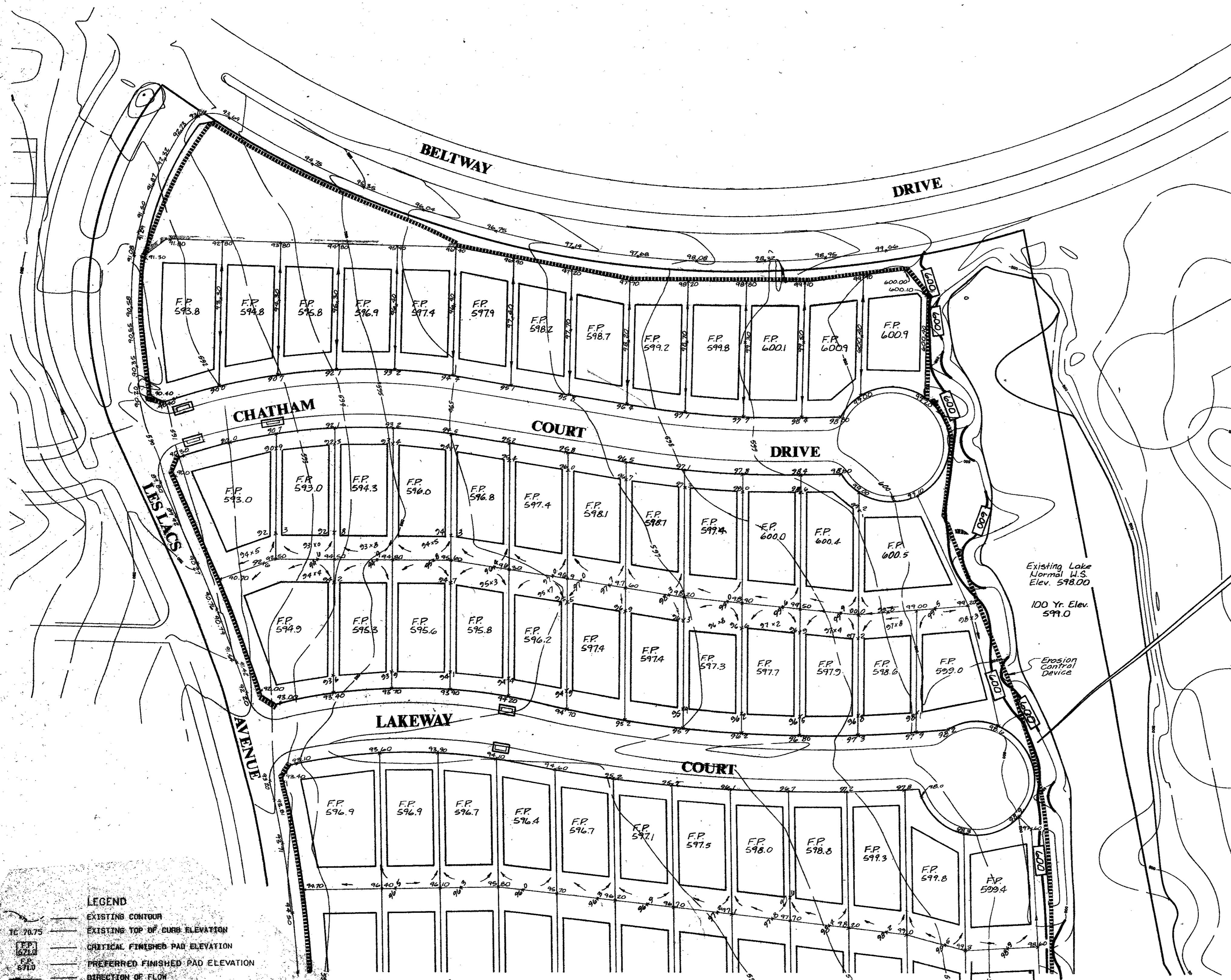


Revisions	Date	Description	Drawn By	Checked By



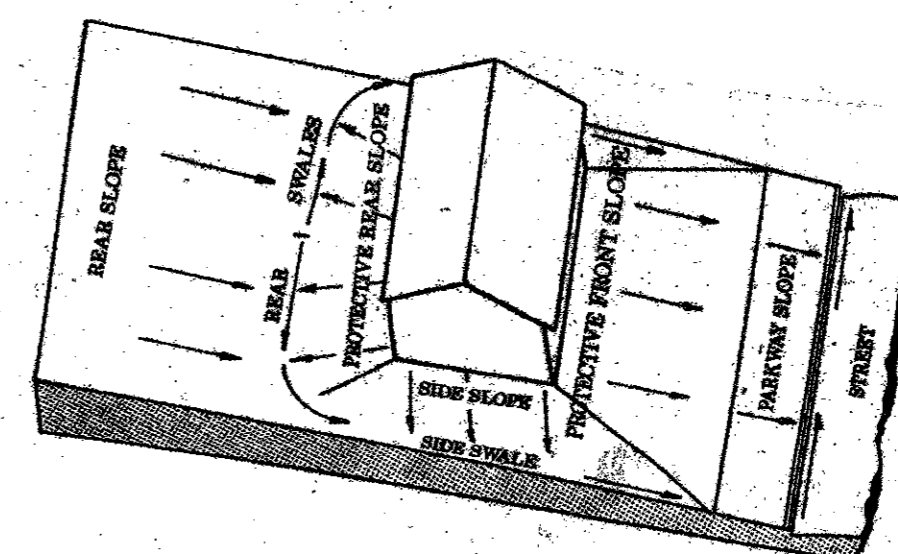
- EROSION CONTROL SPECIFICATIONS**
- The grading contractor shall provide and maintain erosion control devices in the areas indicated on the grading plan or any other areas as directed by the Owner's representative or the Town of Addison.
 - The utility contractor shall provide and maintain an erosion control device around all openings into the storm sewer system to project completion or as directed by Owner's representative or the Town of Addison.
 - The paving contractor shall, upon completion of fine grading provide and maintain erosion control devices in the areas indicated on the grading plan or as directed by the Owner's representative or the Town of Addison.
 - Upon completion of fine grading, all street parkways shall be seeded, fertilized and maintained by the paving contractor.
 - Erosion control devices may be added or reduced in the field as directed by the Town of Addison's inspector or Owner's representative.

- GRADING SPECIFICATIONS**
- All Grading shall conform to the following sections of the U.S. Department of Housing and Urban Development and Federal Housing Authority, latest edition as applicable.
 - Lot Grading shall be completed to provide sufficient dirt on each pad to achieve the critical pad grades and spot grades on each lot. After achieving critical pad grades indicated on this plan, the contractor is to uniformly fill all pads until the preferred pad grade is met or fill pad-grades in priority locations as indicated by the engineer.
 - Compaction performed in pad areas, streets and alleys shall be to a minimum of 95% density at 6" moisture content of 1% to 3% wet of optimum.
 - Remove topsoil in street/alley right-of-ways and pad areas to a depth of 4". Place topsoil in front and backyard areas at the direction of the Owner's representative.
 - Finished Floor elevations are assumed to be 7" above Finished Pad elevations.
 - The Grading contractor is to provide pad compaction testing for each 8" lift at the rate of one random test at the direction of the engineer for every two pads.
 - All lots are to be left in a smooth, bladed condition without any severe change in slope or low spots. Minimum grade across any lot swale is to be 1%. Maximum slope is to be 3:1, unless otherwise approved in the field.
 - All excess material shall be distributed throughout the site.

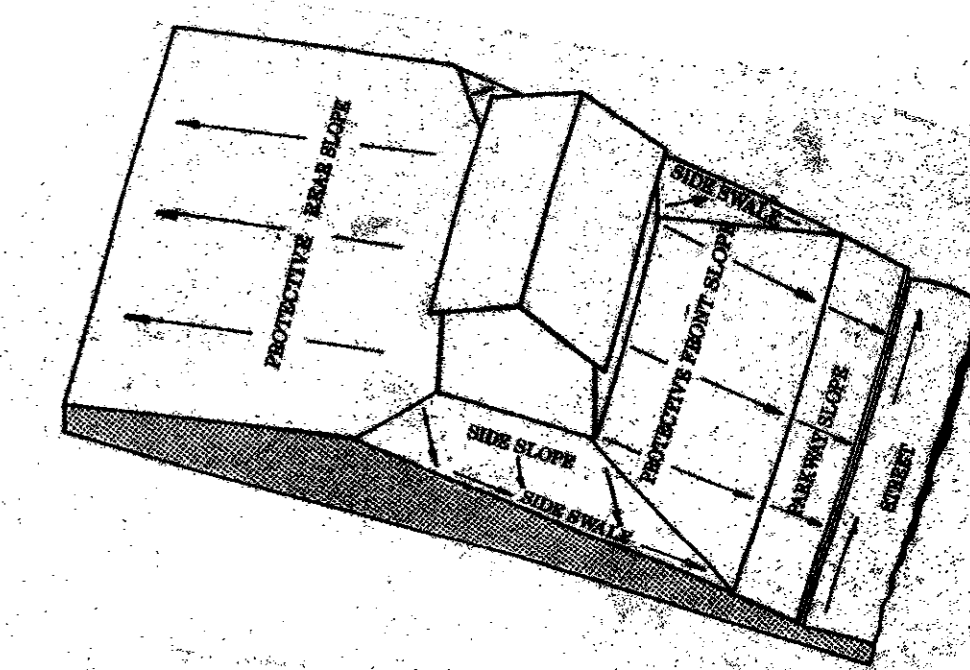
	ROUGH GRADING	FINAL GRADING
Streets	± 0.1'	± 0.1'
Pads	± 0.5'	± 0.20' (Constructed Level)
Lot Corners	± 0.5'	± 0.20'

All Earthen Berm Of Elevation 600 Shall Be Constructed In The Open Space Along The Western And Southern Sides.

Existing Lake Normal U.S. Elev. 598.00
100 Yr. Elev. 599.0



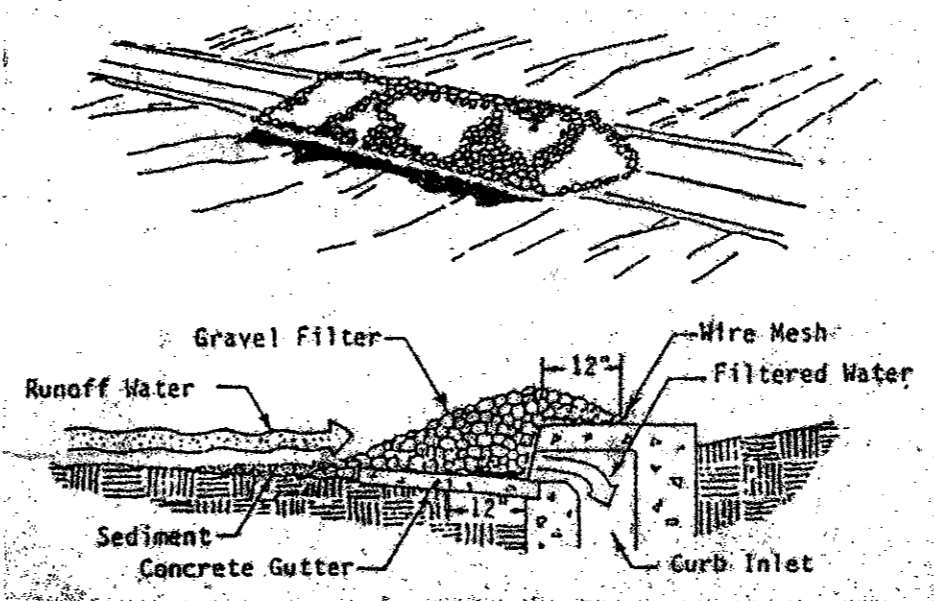
LOT GRADING TYPE A
ALL DRAINAGE TO STREET



LOT GRADING TYPE B
DRAINAGE BOTH TO STREET AND TO REAR LOT LINE

- LEGEND**
- EXISTING CONTOUR
 - TC 70.75 EXISTING TOP OF CURB ELEVATION
 - FP 622.0 CRITICAL FINISHED PAD ELEVATION
 - FP 593.0 PREFERRED FINISHED PAD ELEVATION
 - DIRECTION OF FLOW
 - EROSION CONTROL DEVICE BY GRADING CONTRACTOR MAINTAINED TO PROJECT COMPLETION
 - EROSION CONTROL DEVICE BY PAVING CONTRACTOR PLACED UPON COMPLETION OF FINAL GRADING
 - PROPOSED TOP OF CURB ON SPOT ELEVATION
 - PROBABLE RETAINING WALL
 - EROSION CONTROL DEVICE BY UTILITY CONTRACTOR
 - EXISTING ASPHALT PAVEMENT TO BE REMOVED
 - BLOCK NUMBER

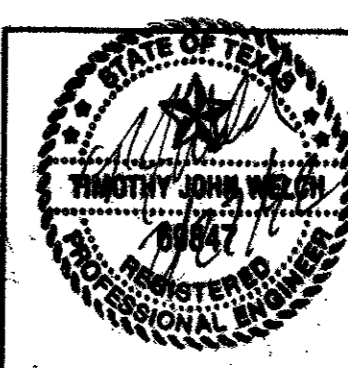
- GRAVEL CURB INLET SEDIMENT FILTER**
- Hardware cloth or comparable wire mesh with 1 openings shall be placed over the curb inlet opening so that at least 12 inches of wire extends across the inlet cover and at least 12 inches of wire extends across the concrete gutter from the inlet opening, as illustrated.
 - Stone shall be piled against the wire so as to anchor it against the gutter and inlet cover and to cover the inlet opening completely. Two (2) to three (3) inch coarse aggregate shall be used.
 - If the stone filter becomes clogged with sediment so that it no longer adequately performs its function, the stone must be washed away from the inlet, cleaned and replaced.



GRADING & EROSION CONTROL PLAN

WATERFORD PARK II
TOWN OF ADDISON, TEXAS

Date: NOV. 1991	Scale: 1" = 50'	SHEET	OF
Drawn By: TNC	Approved By: TNC	GR-1	SHEETS



THE NELSON CORPORATION
LAND PLANNING • ENGINEERING • SURVEYING
5999 SUMMERSIDE DRIVE • SUITE 202 • DALLAS, TEXAS 75252 • (214) 380-2605