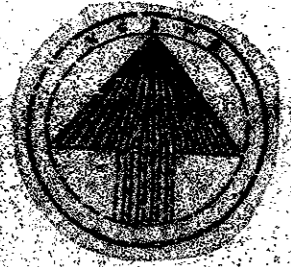
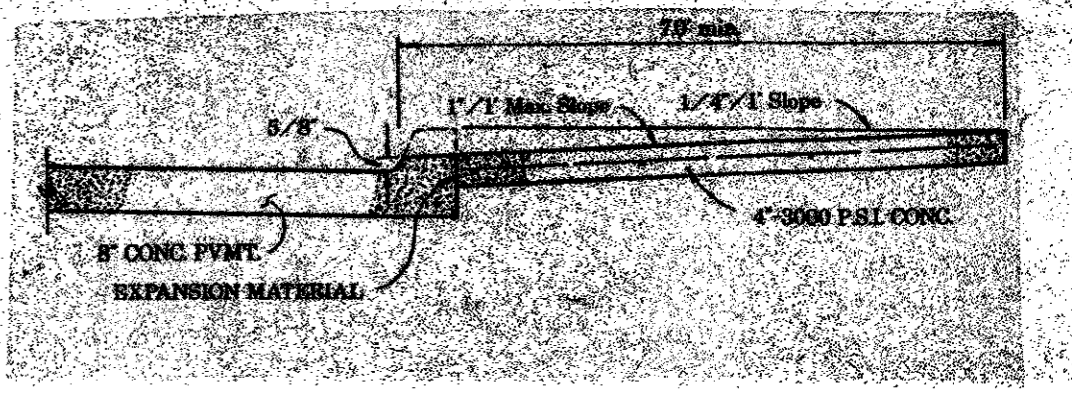
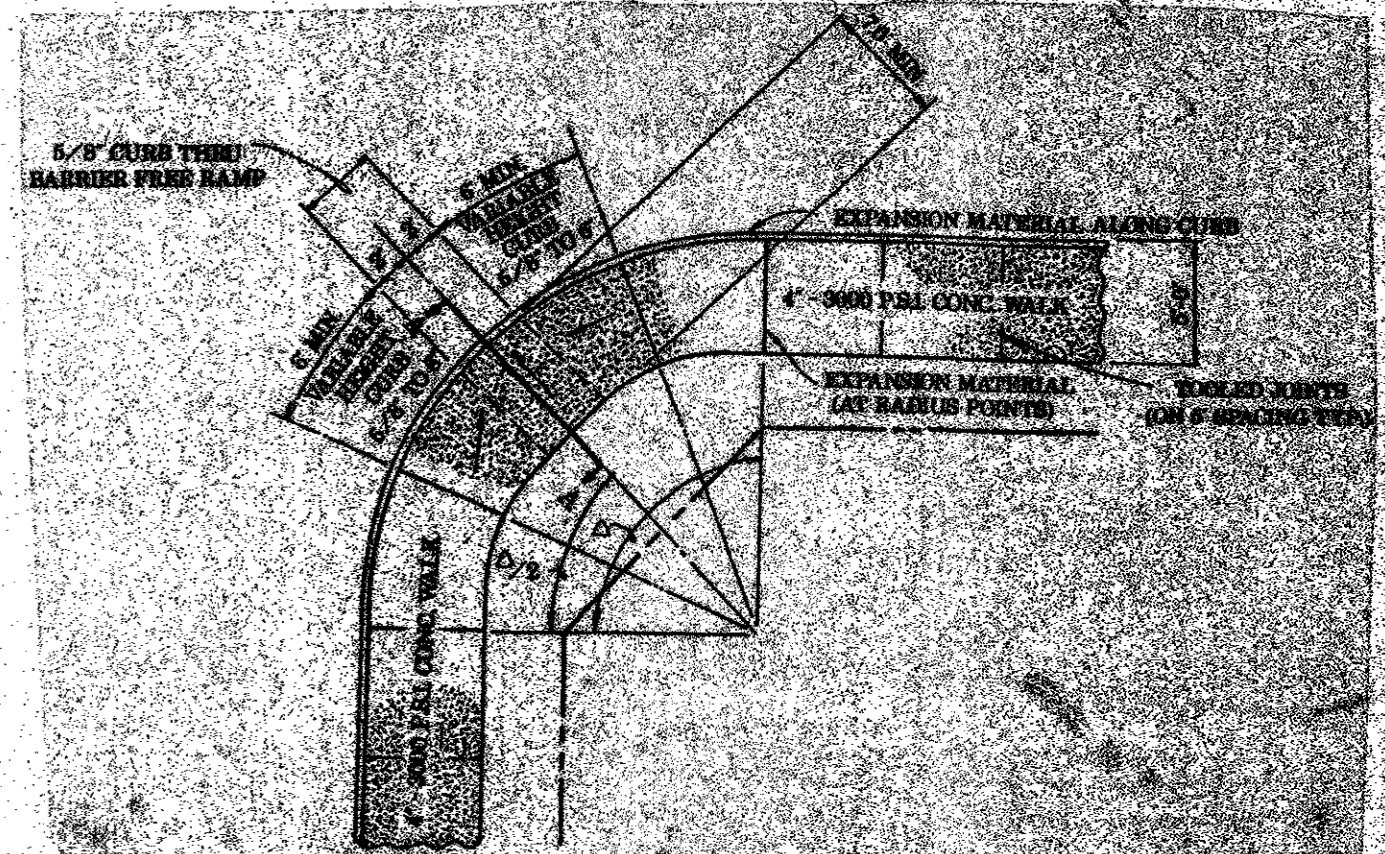
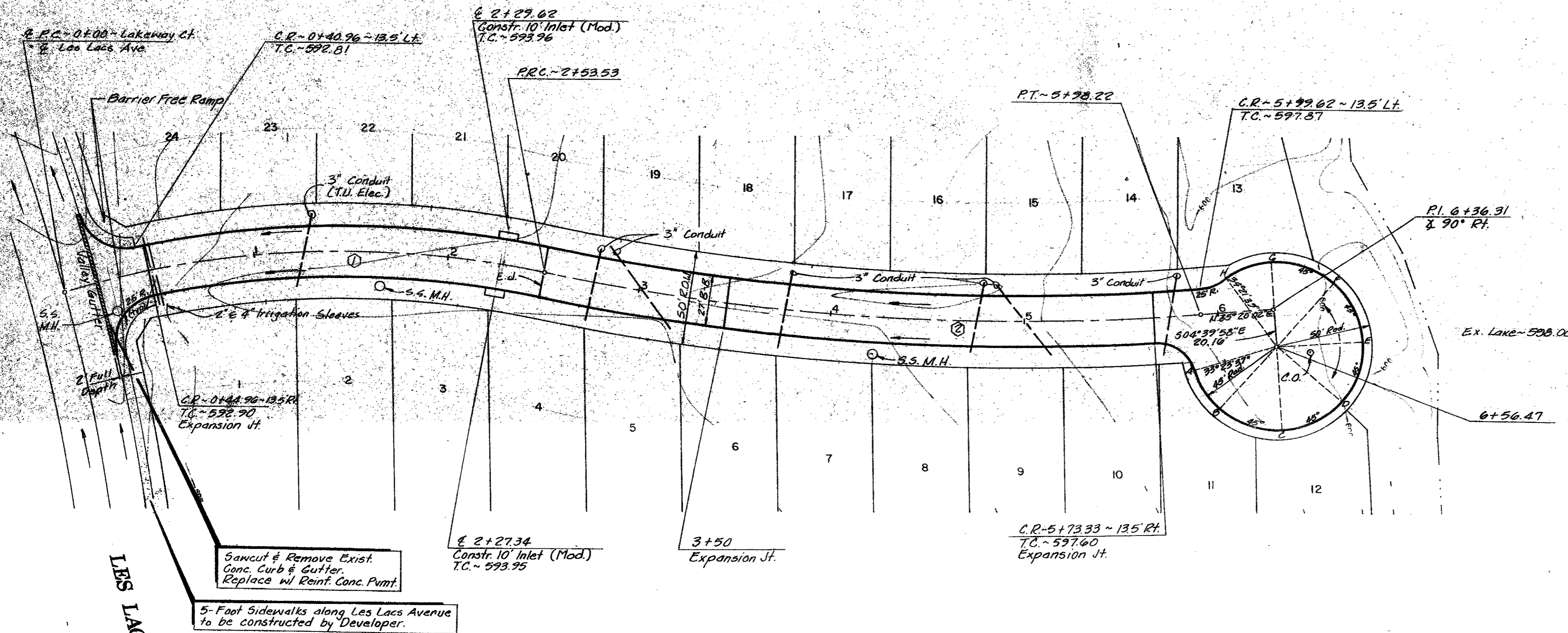


Revisions	Date	Description	Drawn By	Checked By



Lakeway Court



SECTION "A-A"

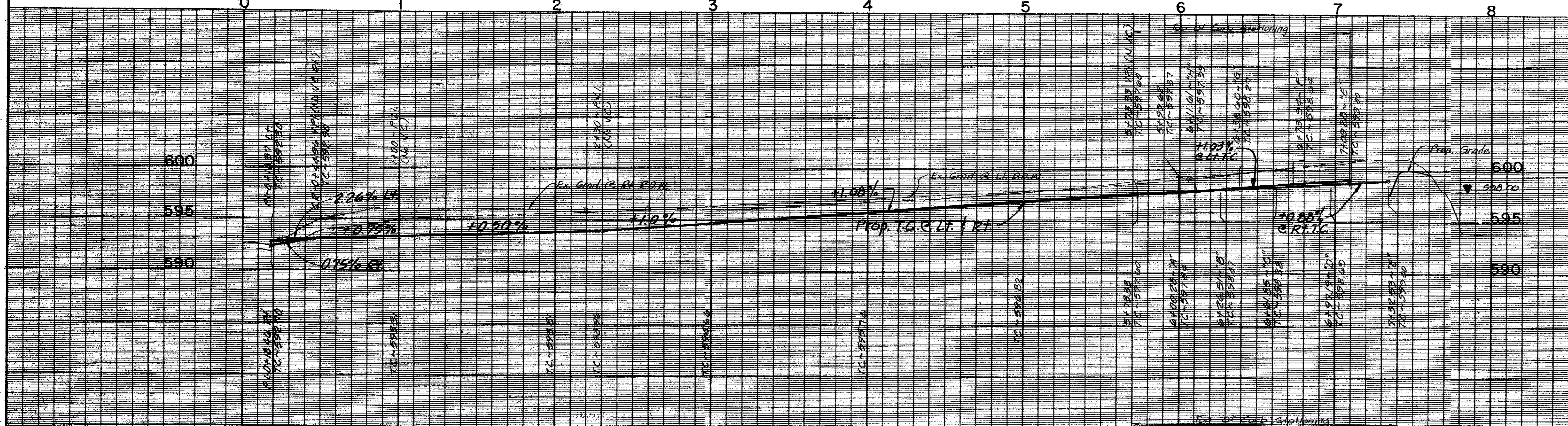
BARRIER FREE RAMP DETAIL
(WALK ABUTTING CURB)

- BENCHMARKS**
- Cut in the northwest corner of inlet southside of Proton Drive at west of Les Lacs Drive. ELEV. 607.35
 - Cut on the north top of curb of Les Lacs Drive at Southeast Addition Corner. ELEV. 593.38
 - Center of second inlet west of the East Addition Line and on the north side of Les Lacs. ELEV. 586.17
 - In center of the third inlet west of the East Addition Line on the north side of Les Lacs Drive. ELEV. 587.61
 - In center of the first inlet south of Beltway Drive and on the east side of Les Lacs Drive. ELEV. 589.88

CURVE DATA

#	A	R	T	L
①	29°03'08"	500.00'	129.55'	223.55'
②	16°27'28"	1200.00'	173.54'	344.69'

LAKEWAY COURT



PAVING PLAN & PROFILE
WATERFORD PARK II
 TOWN OF ADDISON, TEXAS
NC THE NELSON CORPORATION
 LAND PLANNING • ENGINEERING • SURVEYING
 5999 SUMMERSIDE DRIVE • SUITE 202 • DALLAS, TEXAS 75252 • (214) 380-2605

DESIGN	DRAWN	DATE	SCALE	FILE	SHEET NO.
TNC	TNC	NOV. 1991	1"=40'H 1"=6'V	90025-6	P-2