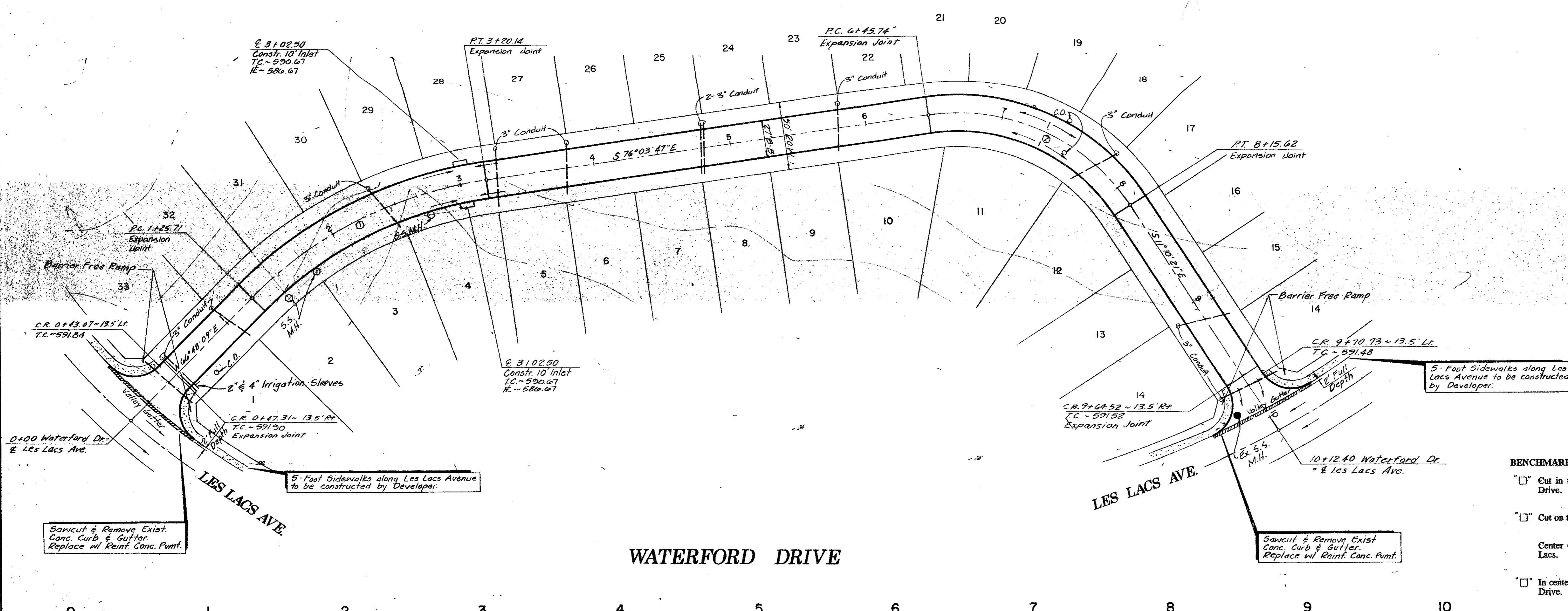
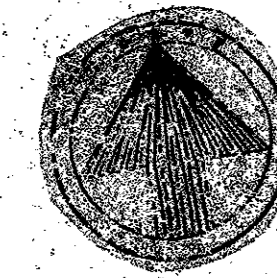


Revisions	Date	Description	Drawn By	Checked By

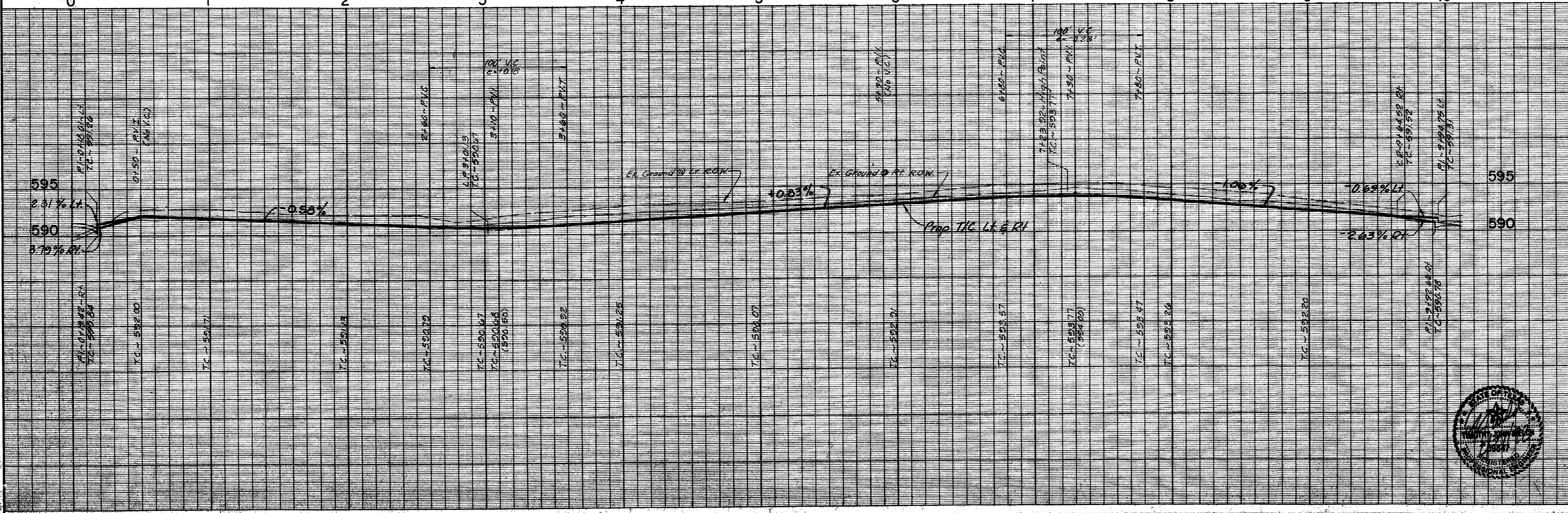


CURVE DATA

#	A	R	T	L
①	37°08'03"	300.00'	100.77'	104.43'
②	64°53'26"	150.00'	95.36'	167.85'

- BENCHMARKS**
- Cut in the northwest corner of inlet southside of Proton Drive at west of Les Lacs Drive. ELEV. 607.35
 - Cut on the north top of curb of Les Lacs Drive at Southeast Addition Corner. ELEV. 593.38
 - Center of second inlet west of the East Addition Line and on the north side of Les Lacs. ELEV. 586.17
 - In center of the third inlet west of the East Addition Line on the north side of Les Lacs Drive. ELEV. 587.61

WATERFORD DRIVE



PAVING PLAN & PROFILE

WATERFORD PARK II

TOWN OF ADDISON, TEXAS

THE NELSON CORPORATION
LAND PLANNING • ENGINEERING • SURVEYING

5999 SUMMERSIDE DRIVE • SUITE 202 • DALLAS, TEXAS 75252 • (214) 380-2605

DESIGN	DRAWN	DATE	SCALE	FILE	SHEET NO.
TNC	TNC	NOV. 1991	1"=40'H, 1"=6'V	90025-6	P-4

