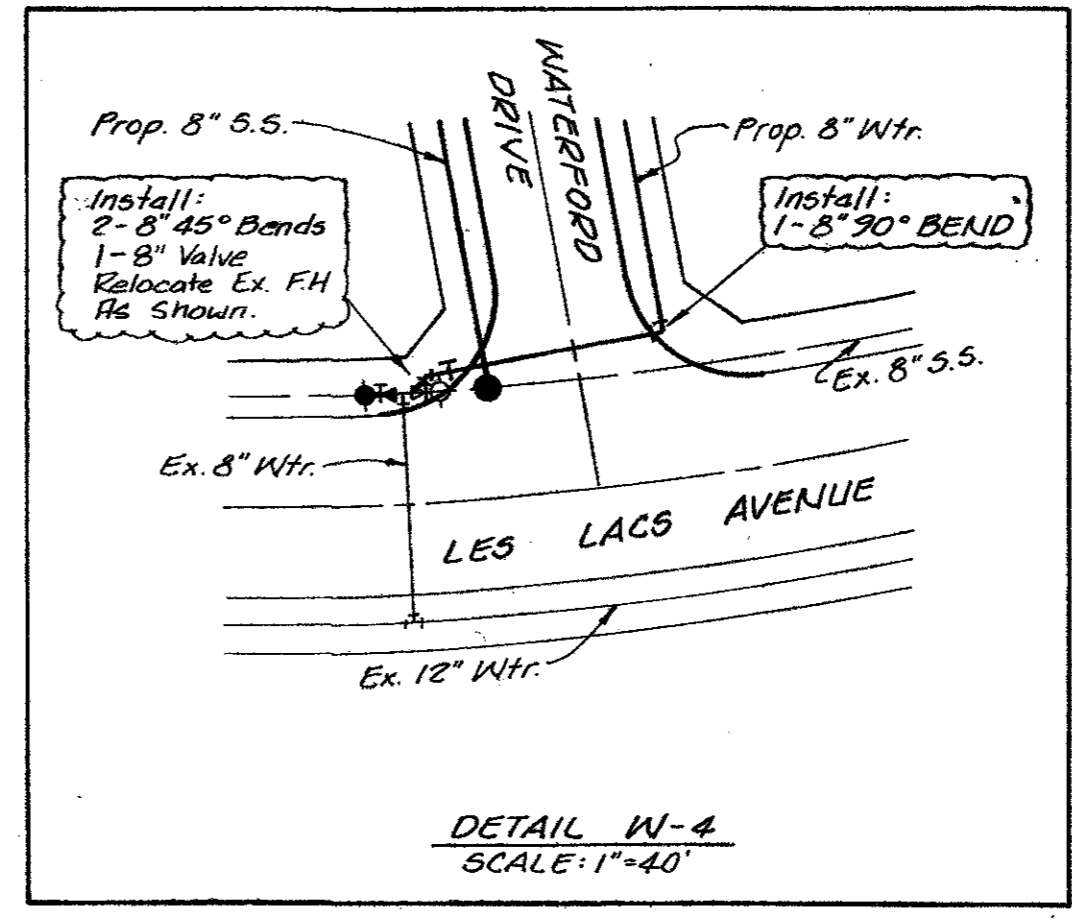
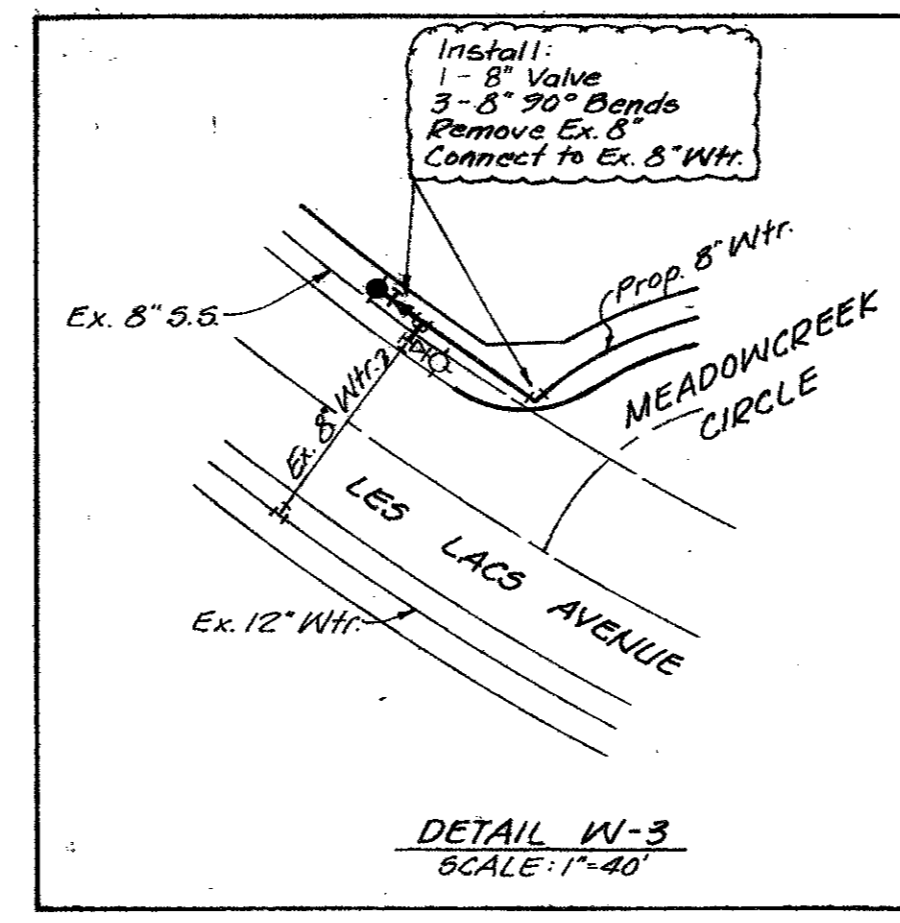
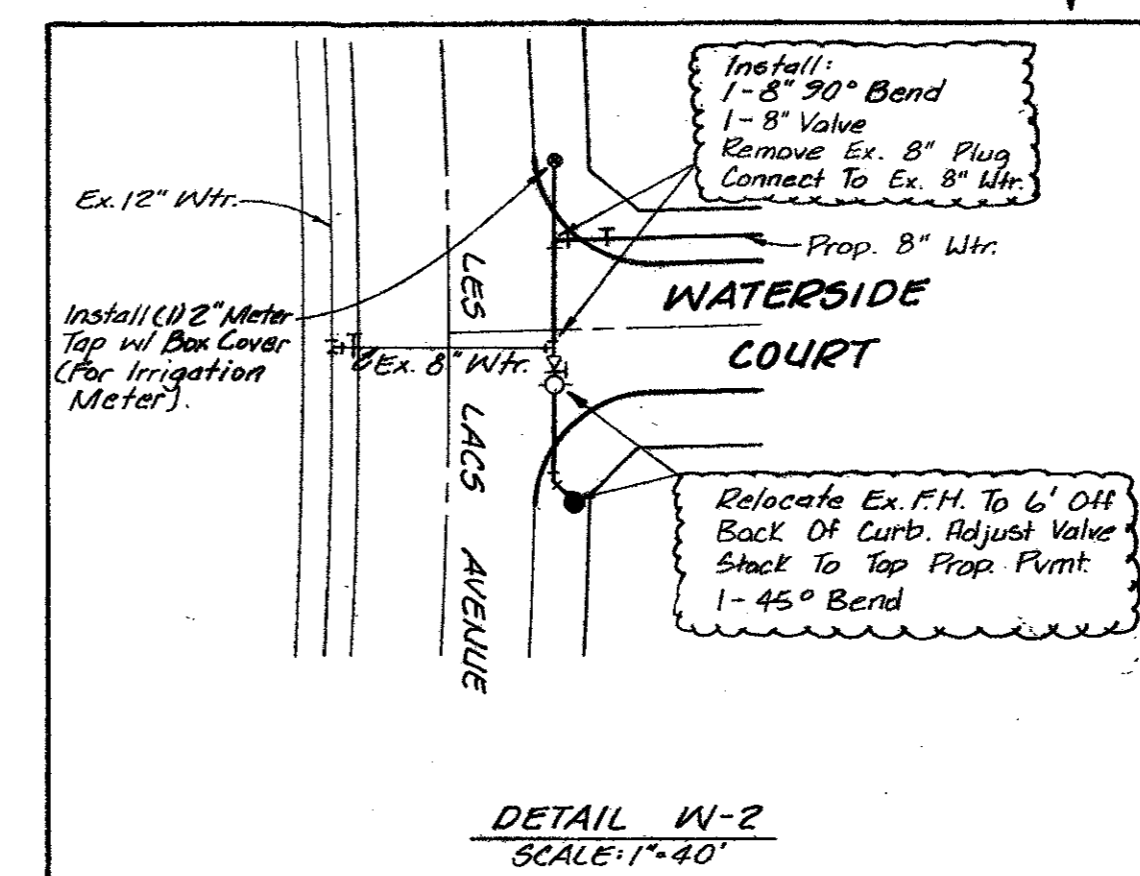
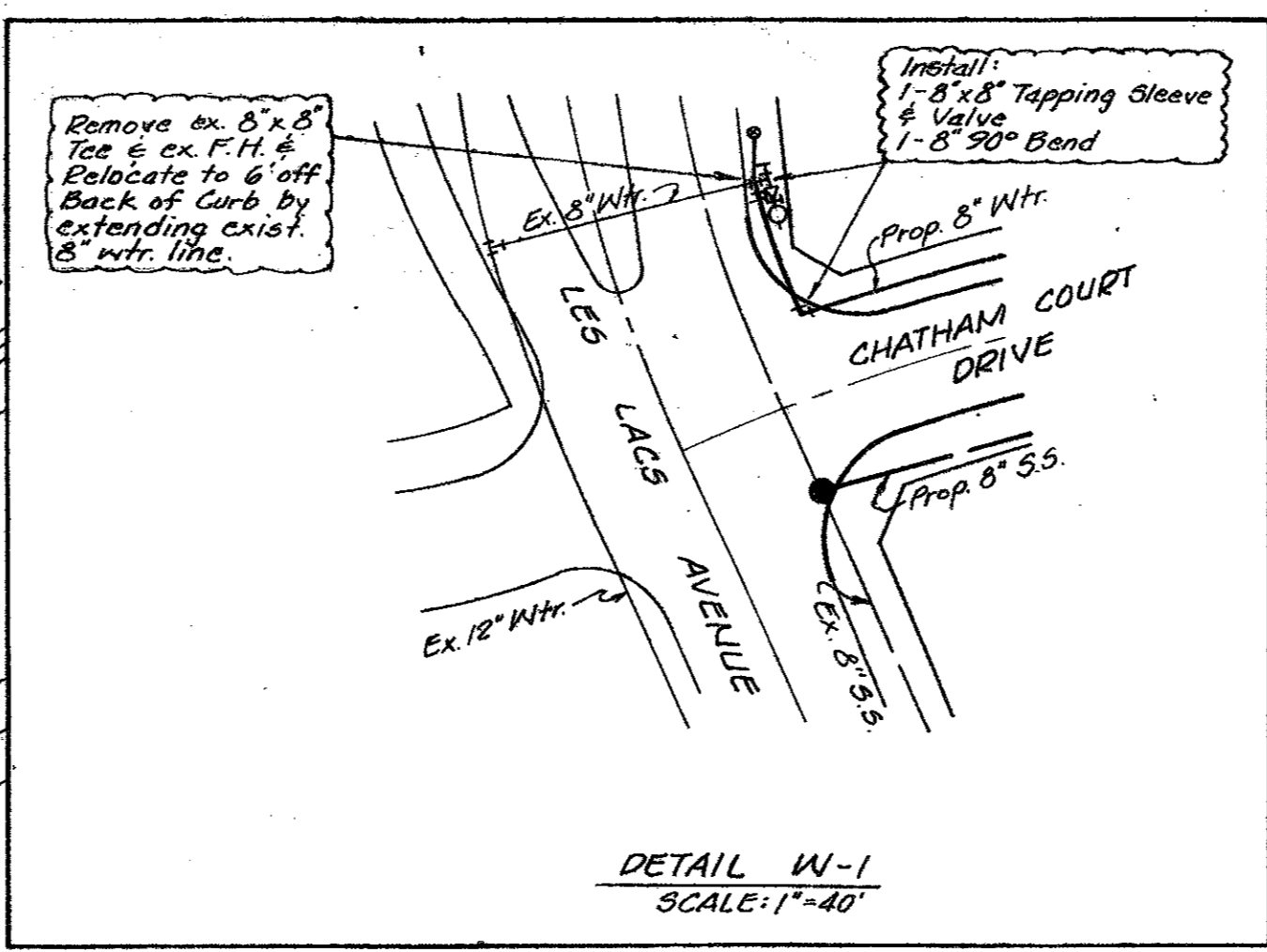
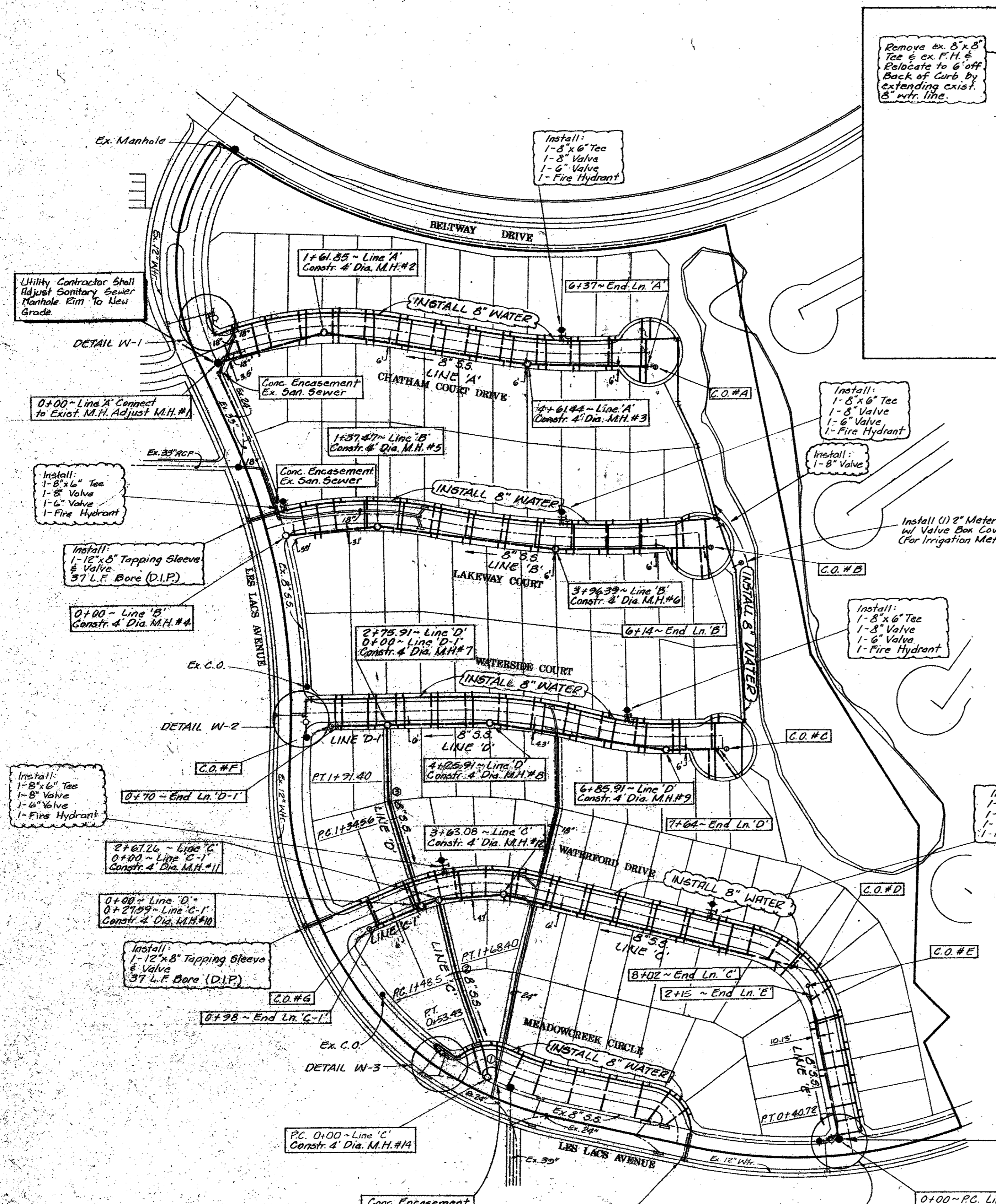
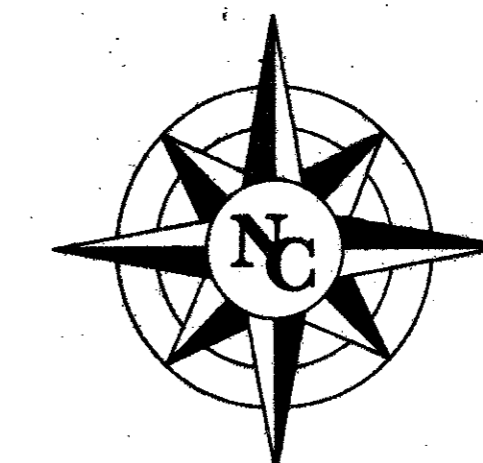
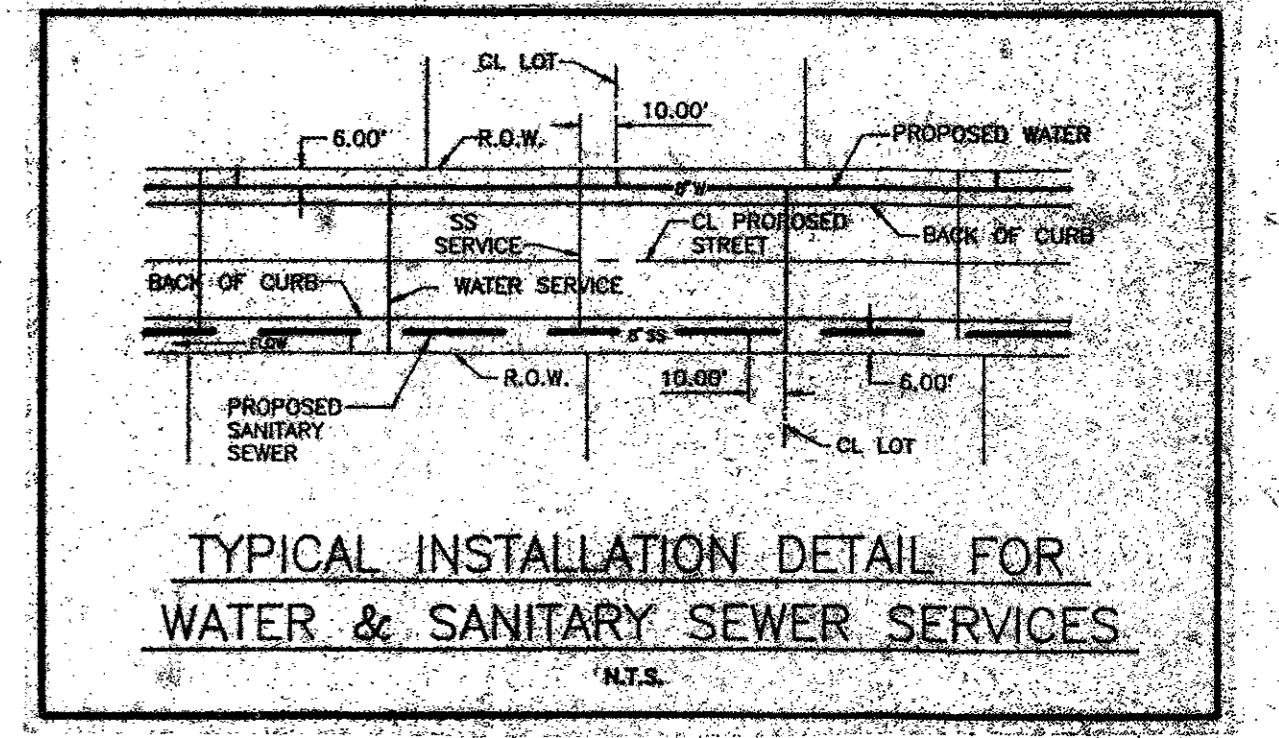


Revisions	Date	Description	Drawn By	Checked By



Note: All Fire Hydrants shall set a min. 6' behind Back of Curb.

- ### WATER & SANITARY GENERAL NOTES
- All water mains shall be PVC SDR-18 water pipe.
  - All sanitary sewer mains shall be PVC SDR-35 and shall have integral wall bell and spigot joints.
  - All water mains shall have a minimum cover below finished grades as follows: 6" & 8" - 48", 12" - 60", or as required to clear other utilities.
  - The location of all utilities are taken from existing public records. The exact location must be determined by the Contractor. It is the duty of the contractor to ascertain whether any other facilities (additional), other than those on the plans may be present.
  - All utility and service laterals trenches shall be backfilled and compacted to 95% Standard Proctor Density.
  - All manholes, cleanouts, valve boxes, fire hydrants, etc., must be adjusted to proper line and grade by the Contractor after placing of permanent paving.
  - All work and materials shall be in accordance with the Town of Addison Standard Specifications.
  - Contractor shall be responsible for providing "as-built" plans to the Engineer showing the location of sewer service by distance to the lot lines.
  - All fire hydrants shall be Mueller Centurion model.
  - The No. 12 plastic coated wire shall be placed in the trench over all water lines. The wire will be tied to all valves and fire hydrants and attached directly to the top of pipe and extend to six (6") inches above finished grade along the outside of all valve stacks and fire hydrants.
  - All dimensions shown are to centerline of pipe and the R.O.W., unless otherwise noted.
  - Contractor shall be responsible for trench safety and details as required.



#### COORDINATE POINTS FOR SAN. SWR. MH's.

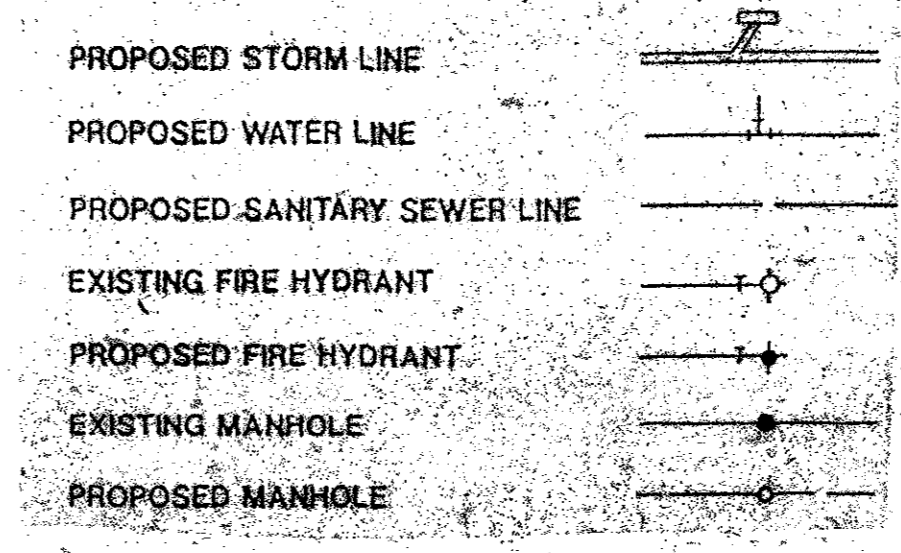
M.H.	NORTH	EAST
1	5148.09	5564.14
2	5192.57	5719.76
3	5146.15	6015.73
4	4894.42	5662.36
5	4908.39	5799.12
6	4873.95	6055.72
7	4619.43	5809.42
8	4622.44	5999.39
9	4581.72	6216.15
10	4350.39	5858.04
11	4360.99	5883.51
12	4367.96	5979.07
13	4009.26	6469.36
14	4104.17	5955.44

#### COORDINATE POINTS FOR SAN. SWR. CLEAN OUTS.

C.O.	NORTH	EAST
A	5142.14	6190.53
B	4875.12	6272.56
C	4582.81	6293.70
D	4278.46	6339.73
E	4261.16	6376.53
F	4618.32	5739.58
G	4523.38	5793.22

- #### BENCHMARKS
- Cut in the northwest corner of inlet southside of Proton Drive at west of Les Lacs Drive. ELEV. 607.35
  - Cut on the north top of curb of Les Lacs Drive at Southeast Addition Corner. ELEV. 593.38
  - Center of second inlet west of the East Addition Line and on the north side of Les Lacs. ELEV. 586.17
  - In center of the third inlet west of the East Addition Line on the north side of Les Lacs Drive. ELEV. 587.61
  - In center of the first inlet south of Beltway Drive and on the east side of Les Lacs Drive. ELEV. 589.88

#### UTILITY KEY



#### SANITARY SEWER CURVE DATA

NO.	LOCATION	Δ	R	T	L
1	Line 'B'	15°18'20"	200.00'	26.97'	53.43'
2	Line 'C'	05°42'02"	200.00'	9.96'	19.90'
3	Line 'D'	16°16'59"	200.00'	28.61'	56.84'

#### WATER METER SCHEDULE

TYPE	SIZE	NO.
DOMESTIC	3/4"	117
IRRIGATION	2"	2

### WATER & SEWER PLAN

## WATERFORD PARK II

### TOWN OF ADDISON, TEXAS

Date: NOV. 1991 Scale: 1"=100' SHEET OF  
 Drawn By: T.N.C. Approved By: T.N.C. WS-1 SHEETS

**THE NELSON CORPORATION**  
 LAND PLANNING • ENGINEERING • SURVEYING  
 5999 SUMMERSIDE DRIVE • SUITE 202 • DALLAS, TEXAS 75252 • (214) 380-2605