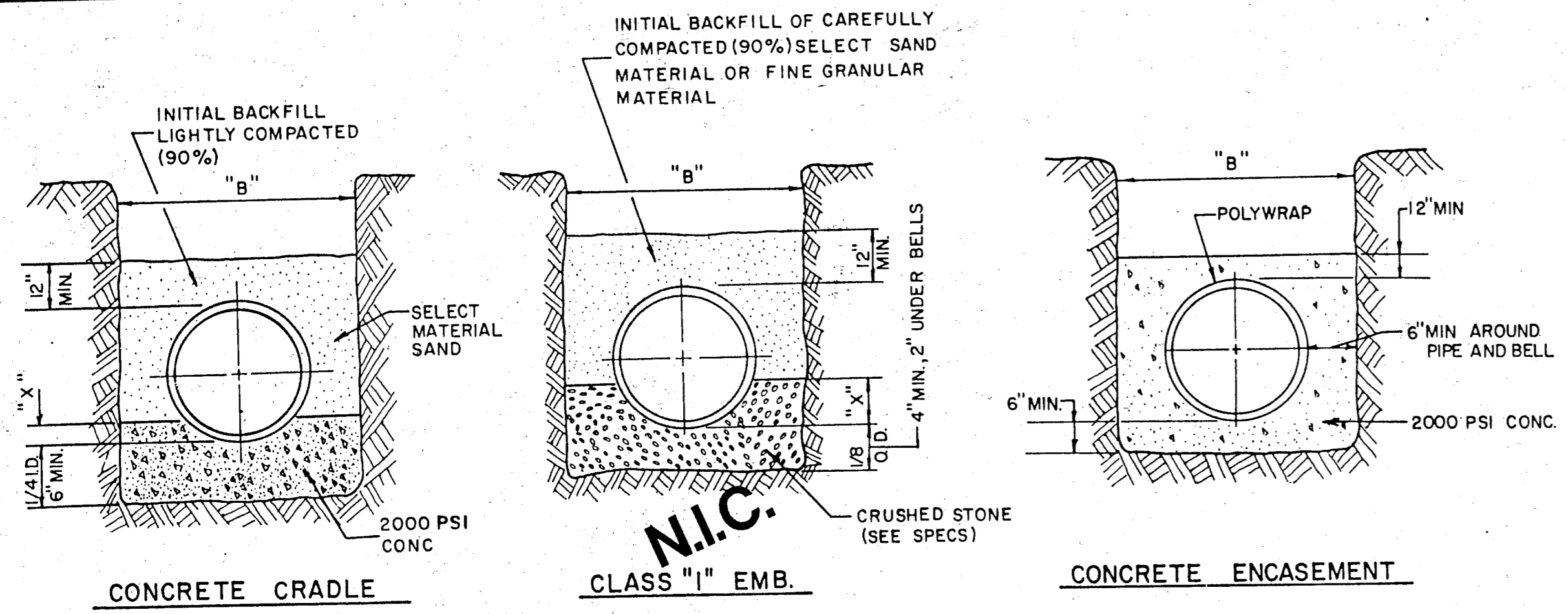
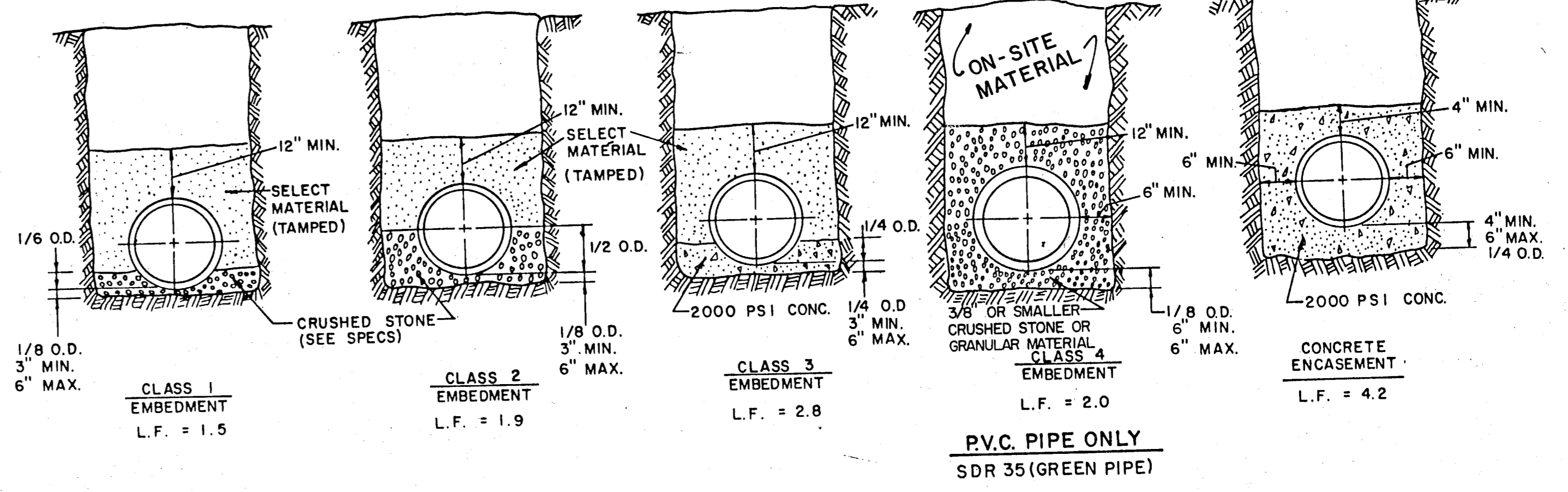


TYPICAL NATIVE MATERIAL COMPACTED TO:
 95% OPTIMUM MOISTURE 0 TO ±3% UNDER PAVEMENT
 95% OPTIMUM MOISTURE 0 TO ±3% OUTSIDE CURB LINES
 JETTING IS NOT ALLOWED
 BACKFILL TO BE COMPACTED IN 6" ± LIFTS



EMBEDMENT DETAILS FOR RCCP WATERLINE



EMBEDMENT DETAILS FOR SANITARY SEWER

TABLE OF QUANTITIES OF MATERIALS IN CUBIC YARDS PER 100 LINEAR FEET

INSIDE DIAMETER OF PIPE	APPROX. OUTSIDE DIAMETER OF PIPE	"X" IS A MINIMUM DEPTH	"B" TRENCH WIDTH FOR COMPUTATION OF QUANTITIES	CONCRETE		CRUSHED STONE FOR CLASS "1" EMBEDMENT
				FOR EMBEDMENT	FOR ENCASEMENT	
REINFORCED CONCRETE CYLINDER PIPE						
14"	17.25"	2.53"	3.4"	6.91	16.07	5.16
16"	19.38"	2.84"	3.6"	7.50	17.76	5.64
18"	21.78"	3.19"	3.8"	8.11	19.52	6.16
24"	27.75"	4.06"	4.4"	9.97	24.90	9.28

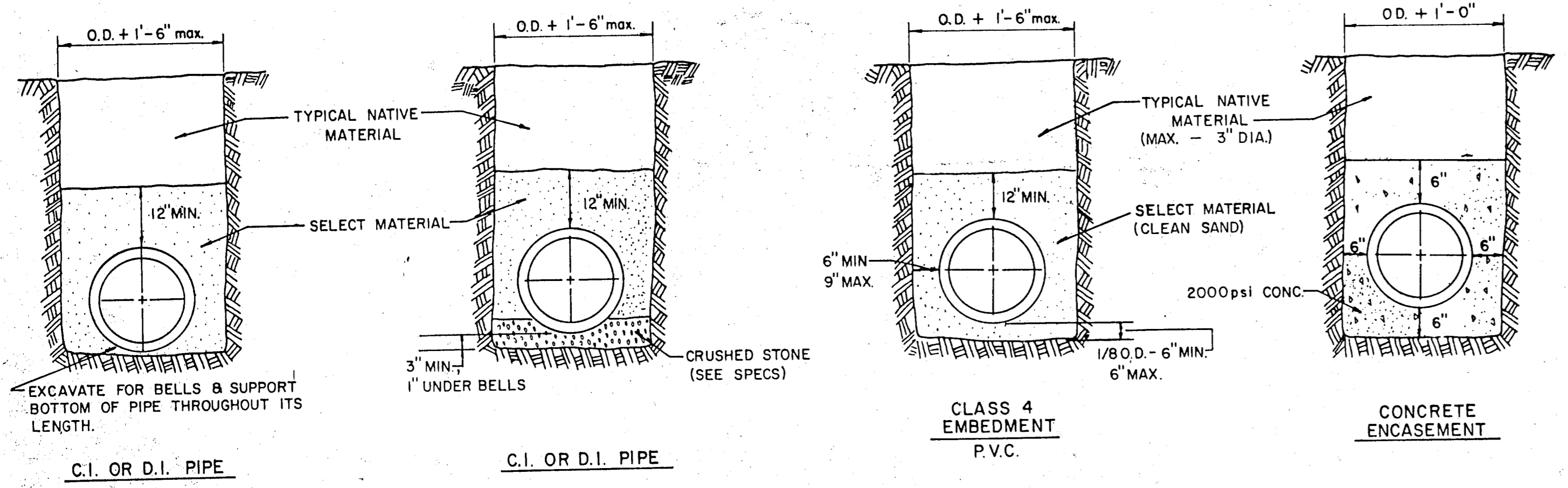
TABLE OF QUANTITIES OF 2000 PSI CONCRETE, GRAVEL OR CRUSHED STONE IN CUBIC YARDS PER 100 LINEAR FEET FOR EACH CLASS EMBEDMENT

TABLE OF QUANTITIES PER 100 LINEAR FEET REINFORCED CONCRETE PIPE

SIZE OF PIPE IN INCHES I.D.	O.D. OF PIPE IN INCHES	TRENCH WIDTH IN INCHES	TRENCH WIDTH IN FEET	CLASS 1 EMBEDMENT CRUSHED STONE	CLASS 2 EMBEDMENT CRUSHED STONE	CLASS 3 EMBEDMENT CONCRETE	CONCRETE ENCASEMENT
12	16.00	32	2.67	4.1	6.5	4.8	15.8
15	19.50	36	3.00	4.8	7.8	6.4	19.2
18	23.00	39	3.25	5.7	9.2	8.2	24.9
21	26.50	43	3.58	6.9	11.0	10.2	28.7
24	30.00	46	3.83	8.3	13.1	12.4	32.8
27	33.50	51	4.25	10.3	16.1	14.4	34.8
30	37.00	57	4.75	12.7	20.1	17.0	39.2
33	40.50	62	5.17	15.1	23.8	19.3	43.8
36	44.00	67	5.58	18.0	28.6	22.1	43.8

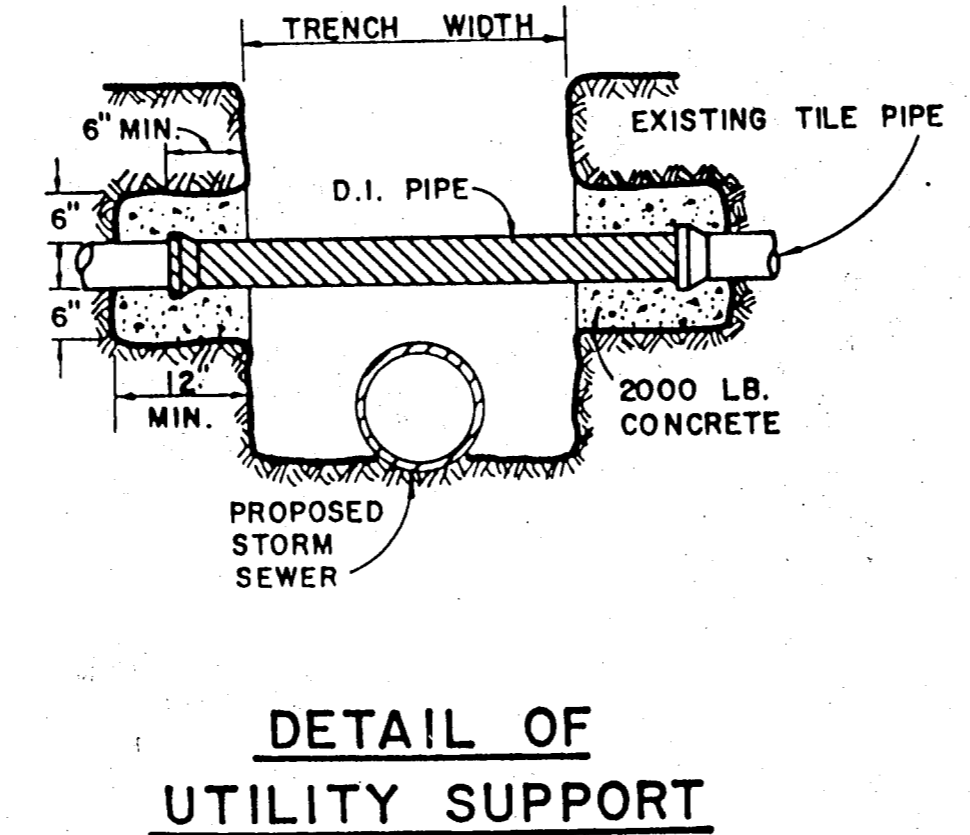
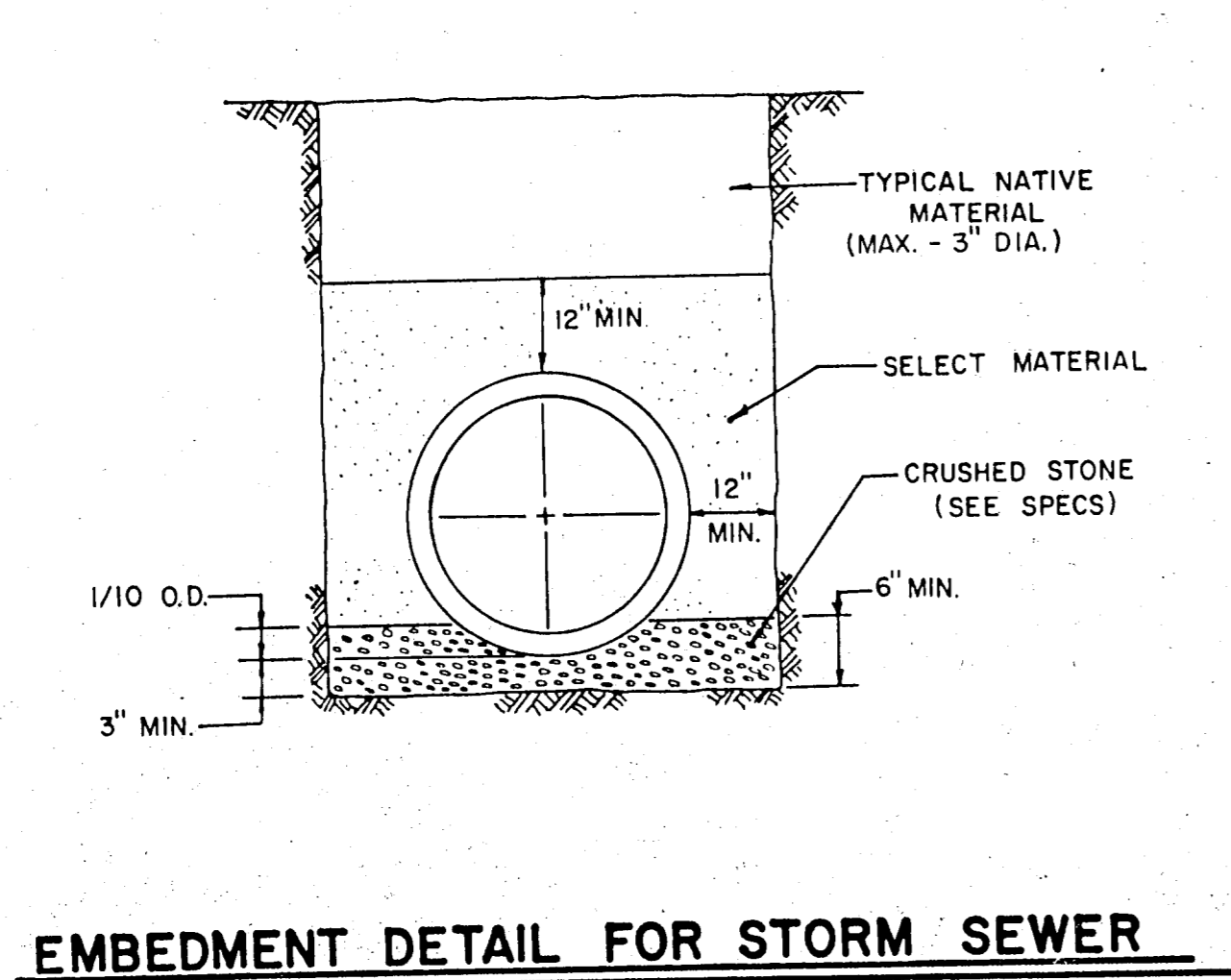
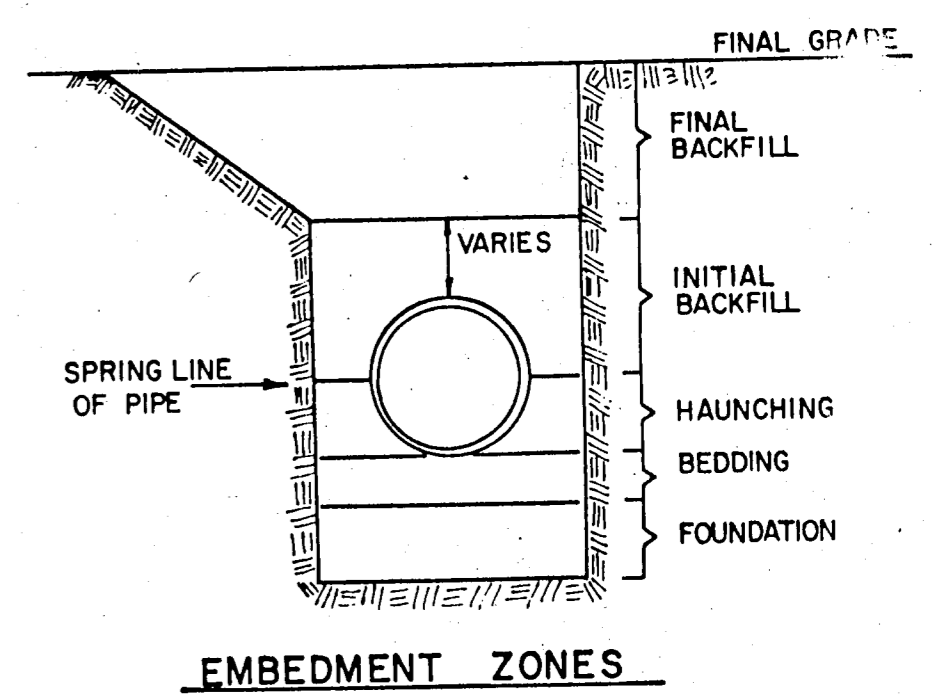
TABLE OF QUANTITIES PER 100 LINEAR FEET-PVC PIPE (IN CUBIC YARDS)

SIZE OF PIPE IN INCHES	O.D. OF PIPE IN INCHES	TRENCH WIDTH IN INCHES	TRENCH WIDTH IN FEET	CLASS 4 EMBEDMENT CRUSHED STONE	CONCRETE ENCASEMENT
6	6.28	24	2.00	8.0	11.7
8	8.16	24	2.00	8.7	12.4
10	10.20	26	2.18	10.2	14.2
12	12.24	28	2.35	11.7	15.9
16	15.30	31	2.61	14.0	18.8
24		36	3.0		
30		42	3.5		



EMBEDMENT DETAILS FOR WATER MAIN

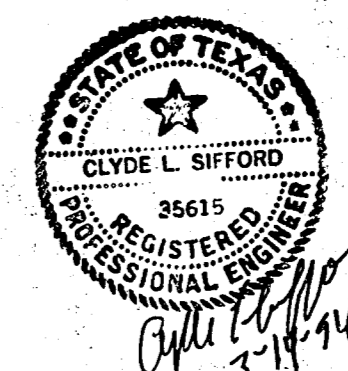
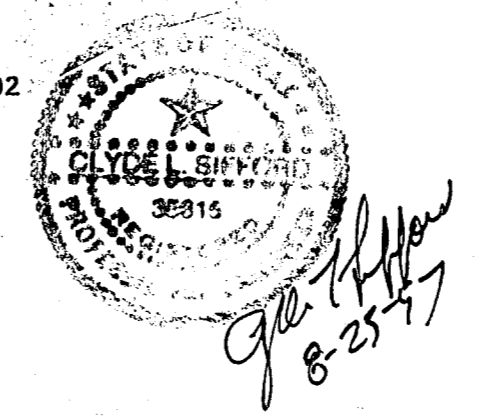
NOTE: ALL SANITARY SEWER LINES THIS PROJECT SHALL HAVE CLASS 4 EMBEDMENT UNLESS OTHERWISE NOTED.



AS BUILTS

Based on visual inspection of the completed improvements, it appears this project was constructed in general conformance with these construction plans and will function as designed.

Clyde L. Sifford, P.E.
 THE NELSON CORPORATION
 5999 Summerside Drive, Suite 202
 Dallas, Texas 75252



STANDARD CONSTRUCTION DETAILS

WATERFORD COURT
TOWN OF ADDISON, TEXAS

Date: NOV. 1993 Scale: AS SHOWN SHEET 14 OF
 Drawn By: TNC Approved By: TNC SHEETS

THE NELSON CORPORATION
 LAND PLANNING • ENGINEERING • SURVEYING
 5999 SUMMERSIDE DRIVE • SUITE 202 • DALLAS, TEXAS 75252 • (214) 380-2605