

Const. 5.0' Conc. Sidewalk
4" Thk.-3000 P.S.I. Reinf.
Conc. Adjacent To Curb

10+00 Pvm't. Sta.
Const. 1-8' Inlet
TC=603.60; FL=599.60

10+00 Pvm't. Sta.
Const. 1-4' Inlet
TC=603.60; FL=599.60

6+75 Pvm't. Sta.
Const. 1-6' Inlets
TC=601.35; FL=597.35

14+70.59 Conn. To Exist. Pvm't.
Saw-Cut Full Depth & Remove
68'x2' Exist. Curb & Gutter, &
Conn. To Exposed Rebars

Const. 5.0' Conc. Sidewalk
4" Thk.-3000 P.S.I. Reinf.
Conc. Adjacent To Curb

Crv.1
Δ = 54°35'48"
R = 75.00'
T = 38.71'
L = 71.47'

Crv.2
Δ = 89°58'58"
R = 50.00'
T = 49.98'
L = 78.52'

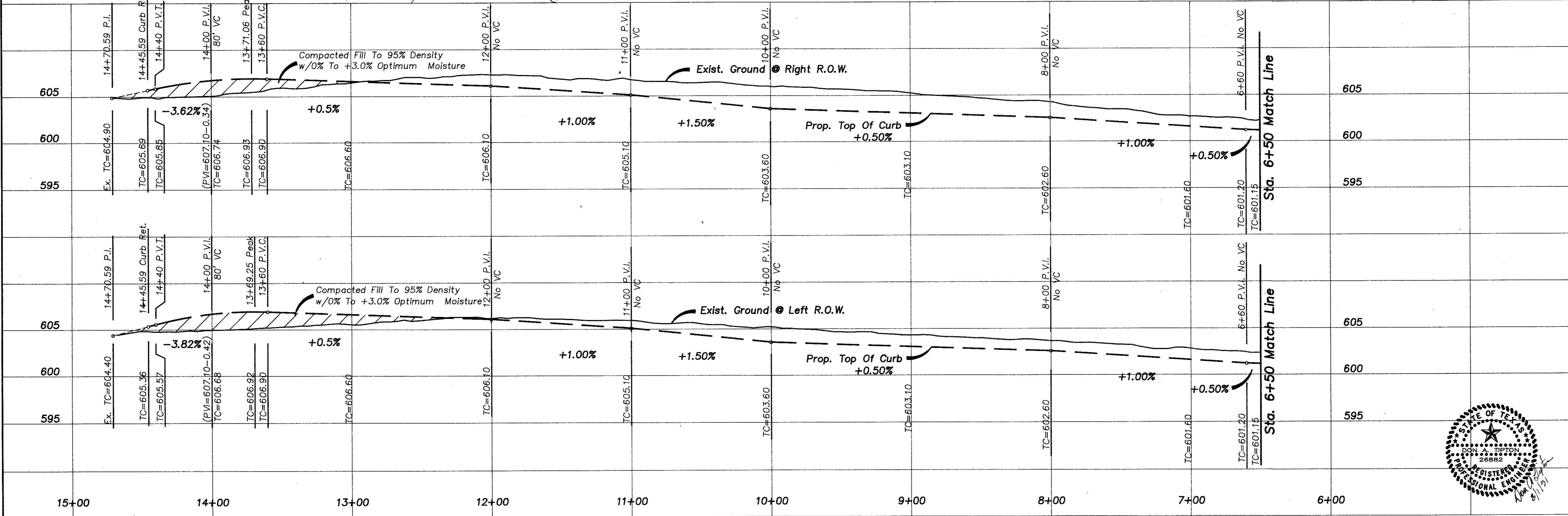
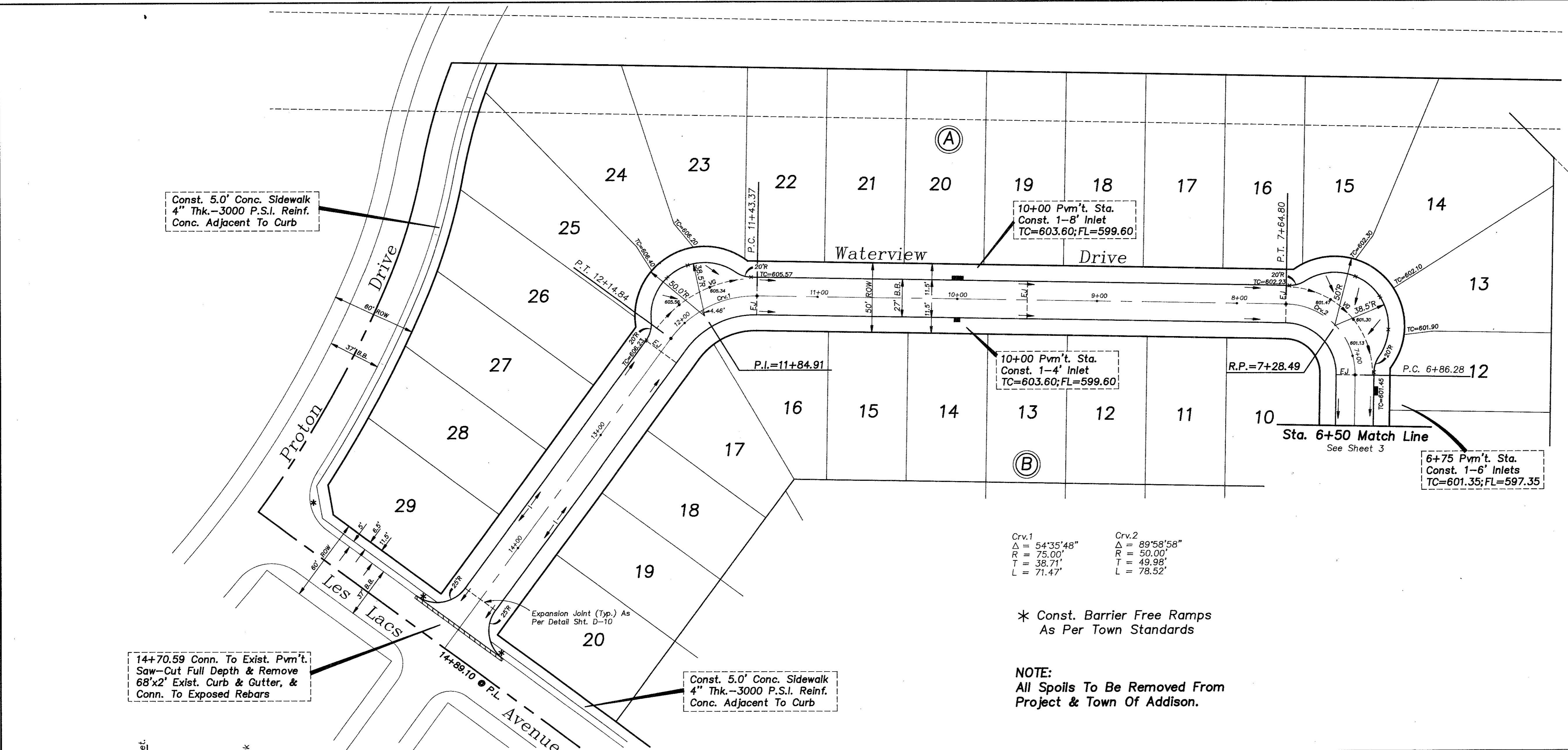
* Const. Barrier Free Ramps
As Per Town Standards

NOTE:
All Spoils To Be Removed From
Project & Town Of Addison.

CAUTION !!!
EXISTING UTILITIES

EXISTING UTILITIES AND UNDERGROUND FACILITIES INDICATED ON THESE PLANS HAVE BEEN LOCATED FROM REFERENCE INFORMATION. IT SHALL BE THE RESPONSIBILITY OF THE CONTRACTOR TO VERIFY BOTH HORIZONTALLY AND VERTICALLY THE LOCATION OF ALL EXISTING UTILITIES AND UNDERGROUND FACILITIES PRIOR TO CONSTRUCTION, TO TAKE NECESSARY PRECAUTIONS IN ORDER TO PROTECT ALL FACILITIES ENCOUNTERED. THE CONTRACTOR SHALL PRESERVE AND PROTECT ALL EXISTING UTILITIES FROM DAMAGE DURING CONSTRUCTION.

WE ARE AWARE OF THESE FACILITIES LOCATED IN THE PROXIMITY TO THIS PROJECT.
TU ELECTRIC COMPANY 323-8928
LONE STAR GAS COMPANY 487-3885
SOUTHWESTERN BELL TELEPHONE 464-4095
STORER CABLE 840-2388

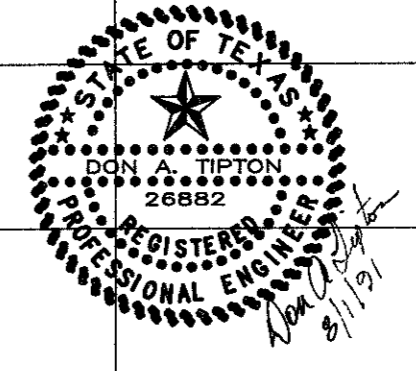


Bench Mark 1
"d" Top of concrete footing of Southwest corner of tower #12-3W-T291. Elev. 619.46

Bench Mark 2
"d" Top of curb South side of Proton Drive, 400' East of Les Lacs Ave. Elev. 611.31(Set)

Bench Mark 3
"d" Top of concrete footing of Northwest corner of tower #12-3W-T290. Elev. 613.08

"As-Built Plans"
1-31-92



PAVING PLAN
WATERVIEW ESTATES
Town Of Addison, Texas

don DON A. TIPTON, INC. CONSULTING ENGINEERS
6330 Belt Line Rd. ~ Suite C ~ Garland, Texas 75043

DESIGN	DRAWN	DATE	SCALE	NOTES	FILE	NO.
d.a.t.	j.m.r.	8/91	1"=40'H 1"=6'V		Waterview Estates 3626	4