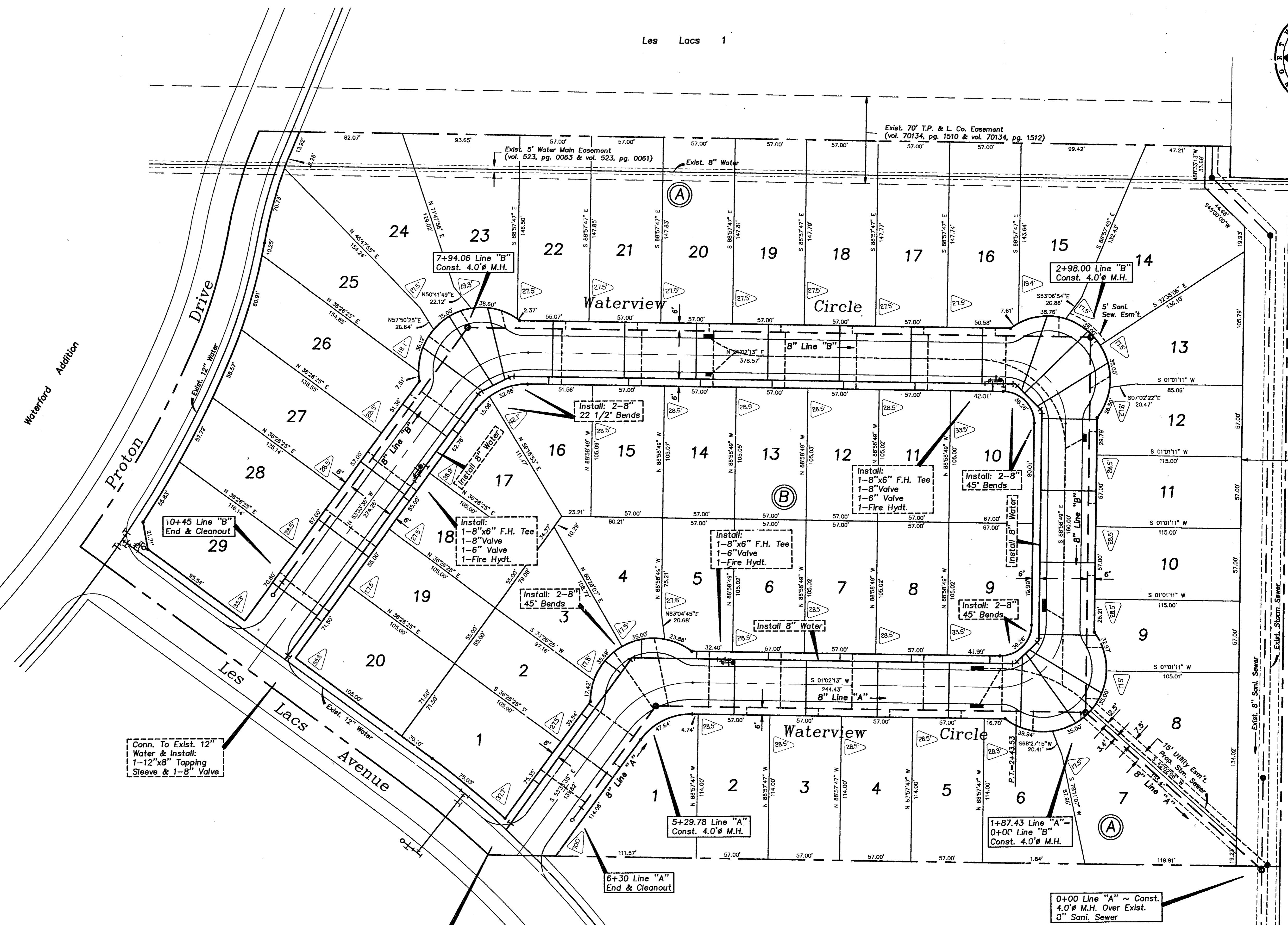


All water services to be installed in the center of each lot. All services to be 1/4". All sani. sewer laterals to be installed 10' downstream of water services. All laterals to be 4".

Typical Service Detail



Conn. To Exist. 12" Water & Install: 1-12"x8" Tapping Sleeve & 1-8" Valve

Conn. To Exist. 12" Water & Install: 1-12"x8" Tapping Sleeve & 1-8" Valve

0+00 Line "A" ~ Const. 4.0' M.H. Over Exist. 8" Sani. Sewer

**CAUTION !!!**  
EXISTING UTILITIES

EXISTING UTILITIES AND UNDERGROUND FACILITIES INDICATED ON THESE PLANS HAVE BEEN LOCATED FROM REFERENCE INFORMATION. IT SHALL BE THE RESPONSIBILITY OF THE CONTRACTOR TO VERIFY BOTH HORIZONTALLY AND VERTICALLY THE LOCATION OF ALL EXISTING UTILITIES AND UNDERGROUND FACILITIES PRIOR TO CONSTRUCTION. TO TAKE NECESSARY PRECAUTIONS IN ORDER TO PROTECT ALL FACILITIES ENCOUNTERED. THE CONTRACTOR SHALL PRESERVE AND PROTECT ALL EXISTING UTILITIES FROM DAMAGE DURING CONSTRUCTION.

WE ARE AWARE OF THESE FACILITIES LOCATED IN THE PROXIMITY TO THIS PROJECT.  
TU ELECTRIC COMPANY 323-8928  
LONE STAR GAS COMPANY 487-3885  
SOUTHWESTERN BELL TELEPHONE 464-4095  
STORER CABLE 840-2388

**"As-Built Notes"**

- 1.  $\triangle$  Denotes distance & direction from lot corner to water services.
- 2. All sanitary sewer laterals are located 10' downstream from water services.

TRENCH SAFETY PLANS & SPEC'S TO BE FURNISHED BY UTILITY CONT. PRIOR TO CONSTRUCTION

**"As-Built Plans"**  
1-31-92

WATER & SEWER PLAN						
WATERVIEW ESTATES						
Town. Of Addison , Texas						
		DON A. TIPTON, INC. CONSULTING ENGINEERS				
6330 Belt Line Rd. ~ Suite C ~ Garland, Texas 75043						
DESIGN	DRAWN	DATE	SCALE	NOTES	FILE	NO.
d.a.t. inc.	j.t.r.	8/91	1"=40'	Waterview Estates 3628		6



35' Greenbelt & Utility Easement To Be Dedicated To Town Of Addison  
Loos Stadium & Fieldhouse  
D. I. S. D.