

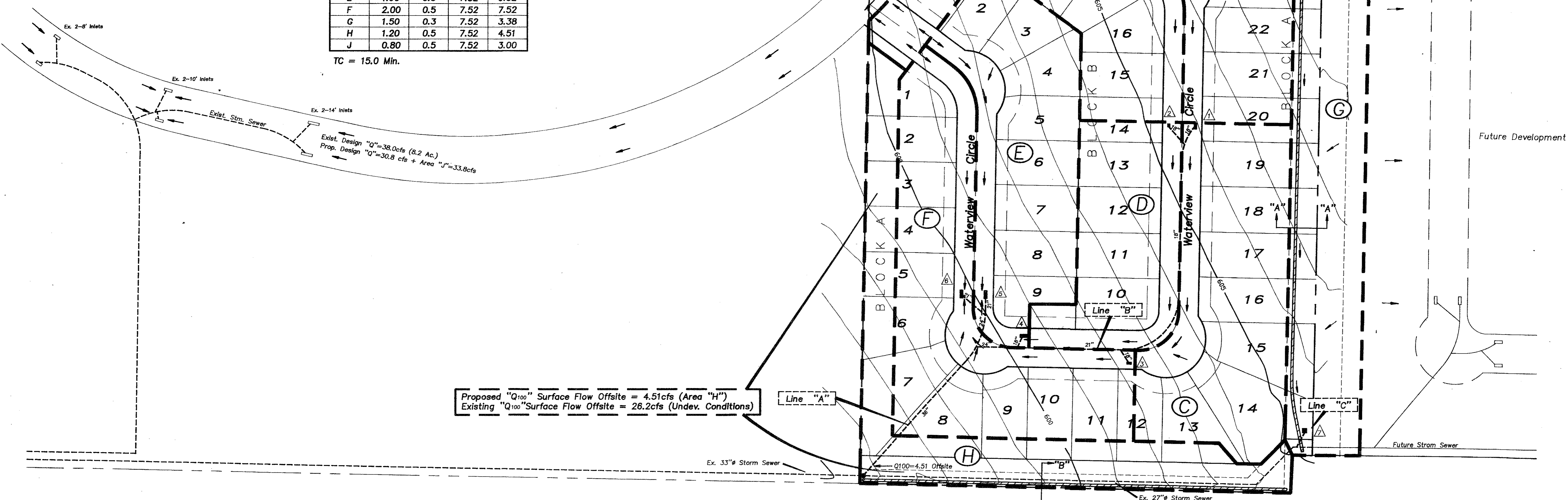
Drainage Data

Area	Acre	"C"	I100	Q100
A	1.80	0.5	7.52	6.77
B	1.00	0.5	7.52	3.76
C	1.50	0.5	7.52	5.64
D	1.00	0.5	7.52	3.76
E	1.60	0.5	7.52	6.02
F	2.00	0.5	7.52	7.52
G	1.50	0.3	7.52	3.38
H	1.20	0.5	7.52	4.51
J	0.80	0.5	7.52	3.00

TC = 15.0 Min.

NOTE:
Area "G" To Be Restored To Original Condition Or Better If Disturbed By Construction.

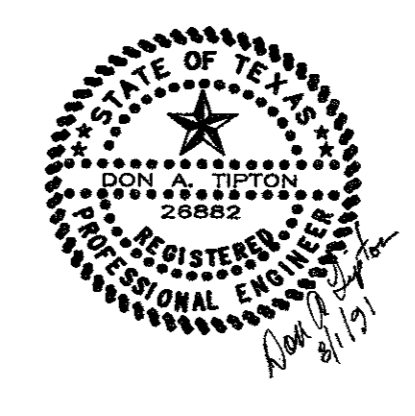
Proposed "Q₁₀₀" Surface Flow Offsite = 4.51cfs (Area "H")
Existing "Q₁₀₀" Surface Flow Offsite = 26.2cfs (Undev. Conditions)



INLET CALCULATION CHART

INLET NO.	DRAINAGE AREA (SQ. FT.)	DESIGN FREQ.	TIME (HRS.)	INTENSITY (IN./HR.)	DEV. COEFF.	UNDEV. COEFF.	DRAINAGE AREA (AC.)	UNDEV. AREA (AC.)	BY-PASS FROM	TOTAL FROM	GUTTER SLOPE	GUTTER TYPE	CROWN TYPE	LENGTH (FEET)	INLET TYPE	INLET SIZE (IN.)	INLET CAPACITY (C.F.S.)	BY-PASS TO	BY-PASS CAPACITY (C.F.S.)	
1	10400	100	15.00	7.52	0.50	0.30	1.80	6.77	4.06	0.00	6.77	1.5	7.0	6"PAR	B	1	0.50	8.00	0.00	N/A
2	10400	100	15.00	7.52	0.50	0.30	1.00	3.76	2.26	0.00	3.76	1.5	7.0	6"PAR	4	1	0.50	4.00	0.00	N/A
3	6475	100	15.00	7.52	0.50	0.30	1.50	5.64	3.38	0.00	5.64	1.0	5.7	6"PAR	6	1	0.50	6.00	0.00	N/A
4	5440	100	15.00	7.52	0.50	0.30	1.00	3.76	2.26	0.00	3.76	1.0	5.7	6"PAR	4	1	0.50	4.00	0.00	N/A
5	4430	100	15.00	7.52	0.50	0.30	1.60	6.02	3.61	0.00	6.02	1.0	5.7	6"PAR	10	1A	0.50	15.00	0.00	N/A
6	4430	100	15.00	7.52	0.50	0.30	2.00	7.52	4.51	0.00	7.52	1.0	5.7	6"PAR	10	1A	0.50	15.00	0.00	N/A
7	TPAL ESM'T	100	15.00	7.52	N/A	0.30	1.50	0.00	3.38	0.00	0.00	1.0	6.0	DITCH	2'x2'	V	0.50	8.00	0.00	N/A

Bench Mark 1
"d" Top of concrete footing of Southwest corner of tower #12-3W-T291. Elev. 619.46
Bench Mark 2
"d" Top of curb South side of Proton Drive, 400' East of Les Lacs Ave. Elev. 611.31(Set)
Bench Mark 3
"d" Top of concrete footing of Northwest corner of tower #12-3W-T290. Elev. 613.08



DRAINAGE MAP
WATERVIEW ESTATES
Town Of Addison, Texas

DON A. TIPTON, INC. CONSULTING ENGINEERS
6330 Belt Line Rd. ~ Suite C ~ Garland, Texas 75043

DESIGN	DRAWN	DATE	SCALE	NOTES	FILE	NO.
d.a.t. inc.	d.a.t. inc.	8/91	1"=60'	d.b.	Waterview Estates 3626	2