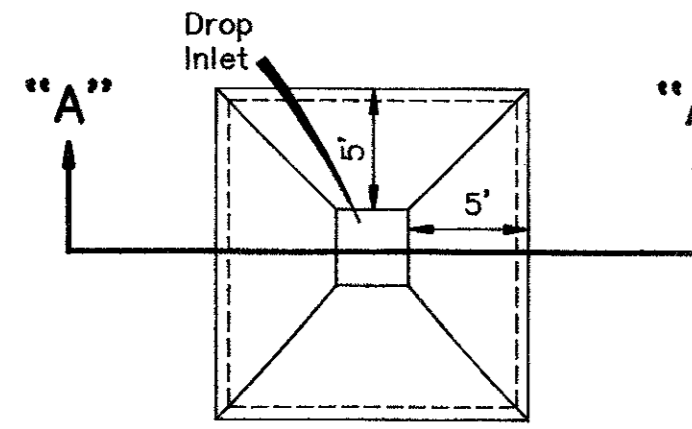
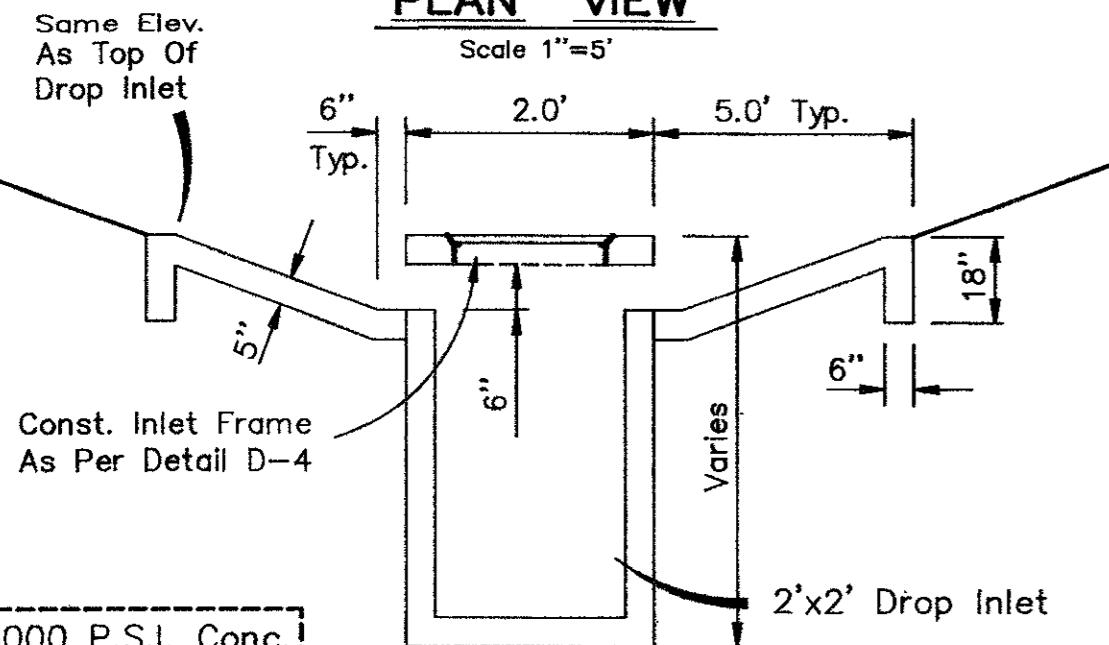


Storm Sewer Curve Data

| Crv. 1 | Crv. 2 | Crv. 3 | Crv. 4 |
|---------------|---------------|---------------|---------------|
| Δ = 40°57'41" | Δ = 14°18'00" | Δ = 89°58'44" | Δ = 38°12'45" |
| R = 100.00' | R = 100.00' | R = 70.00' | R = 70.00' |
| T = 37.35' | T = 12.54' | T = 69.97' | T = 24.25' |
| L = 71.49' | L = 24.96' | L = 109.93' | L = 46.69' |

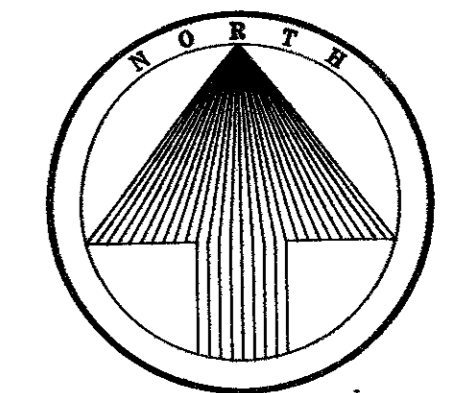
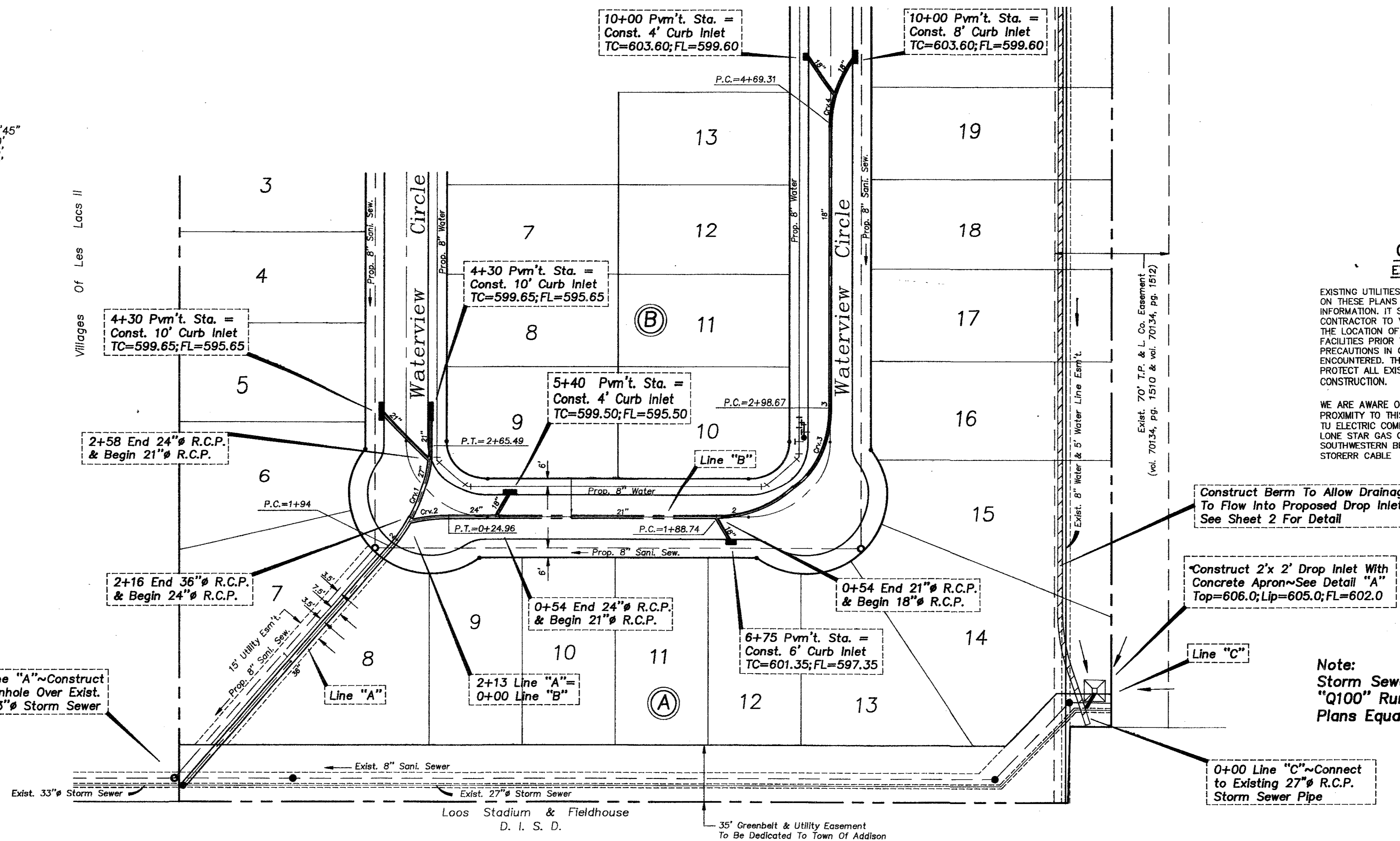


PLAN VIEW
Scale 1"=5'



SECTION "A-A"
No Scale

CONCRETE APRON DETAIL



CAUTION !!!
EXISTING UTILITIES

EXISTING UTILITIES AND UNDERGROUND FACILITIES INDICATED ON THESE PLANS HAVE BEEN LOCATED FROM REFERENCE INFORMATION. IT SHALL BE THE RESPONSIBILITY OF THE CONTRACTOR TO VERIFY BOTH HORIZONTALLY AND VERTICALLY THE LOCATION OF ALL EXISTING UTILITIES AND UNDERGROUND FACILITIES PRIOR TO CONSTRUCTION, TO TAKE NECESSARY PRECAUTIONS IN ORDER TO PROTECT ALL FACILITIES ENCOUNTERED. THE CONTRACTOR SHALL PRESERVE AND PROTECT ALL EXISTING UTILITIES FROM DAMAGE DURING CONSTRUCTION.

WE ARE AWARE OF THESE FACILITIES LOCATED IN THE PROXIMITY TO THIS PROJECT:
 TU ELECTRIC COMPANY 323-8928
 LONE STAR GAS COMPANY 487-3885
 SOUTHWESTERN BELL TELEPHONE 464-4095
 STORERR CABLE 840-2388

Construct Berm To Allow Drainage To Flow Into Proposed Drop Inlet See Sheet 2 For Detail

Construct 2'x2' Drop Inlet With Concrete Apron-See Detail "A" Top=606.0; Lip=605.0; FL=602.0

Note: Storm Sewer System Designed To Carry "Q100" Runoff - All "Q" Shown On The Plans Equals "Q100" Runoffs.

| Station | Line "A" | Line "B" | Line "C" |
|---------|--------------|--------------|--------------|
| 0+00 | 36" On 0.60% | 24" On 3.00% | 18" On 0.90% |
| 1+00 | 24" On 0.60% | 21" On 0.90% | 18" On 0.90% |
| 2+00 | 21" On 5.46% | 18" On 0.90% | 18" On 0.90% |
| 3+00 | 21" On 5.46% | 18" On 0.90% | 18" On 0.90% |
| 4+00 | 18" On 4.00% | 18" On 4.00% | 18" On 4.00% |

STORM SEWER PLAN
WATERVIEW ESTATES
Town Of Addison, Texas

DON A. TIPTON, INC. CONSULTING ENGINEERS
6330 Belt Line Rd. ~ Suite C ~ Garland, Texas 75043

| DESIGN | DRAWN | DATE | SCALE | NOTES | FILE | NO. |
|--------|--------|------|-------------------|-------|------------------------|-----|
| d.a.t. | j.m.r. | 8/91 | 1"=40'H 1"=6'V | | Waterview Estates 3626 | 5 |