

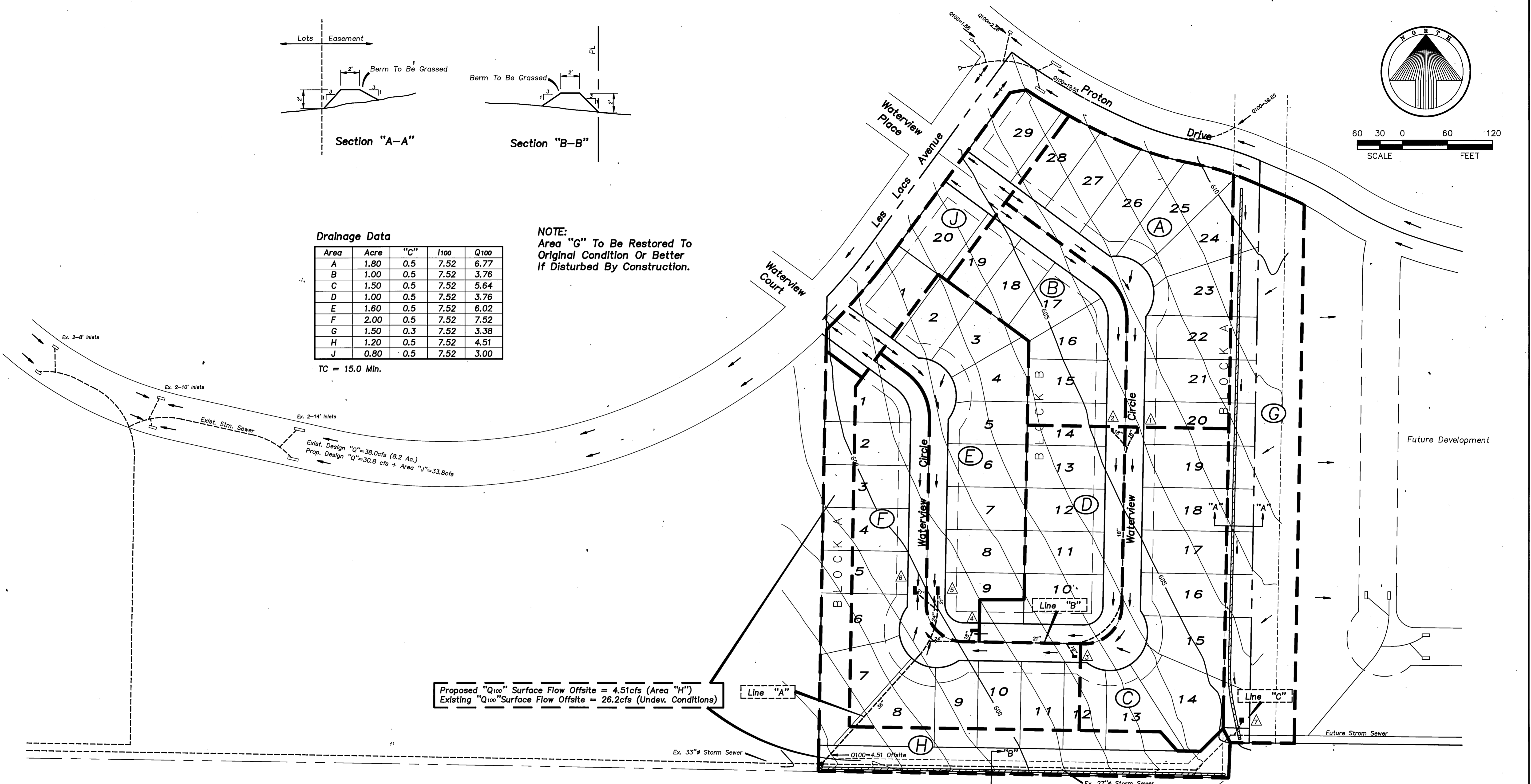
**Drainage Data**

Area	Acre	"C"	I100	Q100
A	1.80	0.5	7.52	6.77
B	1.00	0.5	7.52	3.76
C	1.50	0.5	7.52	5.64
D	1.00	0.5	7.52	3.76
E	1.60	0.5	7.52	6.02
F	2.00	0.5	7.52	7.52
G	1.50	0.3	7.52	3.38
H	1.20	0.5	7.52	4.51
J	0.80	0.5	7.52	3.00

**NOTE:**  
Area "G" To Be Restored To Original Condition Or Better If Disturbed By Construction.

TC = 15.0 Min.

Proposed "Q<sub>100</sub>" Surface Flow Offsite = 4.51cfs (Area "H")  
Existing "Q<sub>100</sub>" Surface Flow Offsite = 26.2cfs (Undev. Conditions)



INLET CALCULATION CHART

INLET NO.	DRAINAGE AREA	INLET LOCATION	DESIGN FREQ.	DESIGN TIME (MIN)	DESIGN INTENSITY (IN./HR.)	DEV. COEFF.	UNDEV. COEFF.	UNDEV. AREA (ACRE)	UNDEV. Q (C.F.S.)	BY-PASS Q (C.F.S.)	TOTAL Q (C.F.S.)	GUTTER SLOPE (FT/100FT)	GUTTER CAPACITY (C.F.S.)	CROWN TYPE	LENGTH (FEET)	INLET TYPE	INLET DIAMETER (IN.)	INLET CAPACITY (C.F.S.)	BY-PASS Q (C.F.S.)	BY-PASS TYPE	
1	A	10+00	100	15.00	7.52	0.50	0.30	1.80	6.77	4.06	0.00	6.77	1.5	7.0	6"PAR	8	I	0.50	8.00	0.00	N/A
2	B	10+00	100	15.00	7.52	0.50	0.30	1.00	3.76	2.26	0.00	3.76	1.5	7.0	6"PAR	4	I	0.50	4.00	0.00	N/A
3	C	6+75	100	15.00	7.52	0.50	0.30	1.50	5.64	3.38	0.00	5.64	1.0	5.7	6"PAR	6	I	0.50	6.00	0.00	N/A
4	D	5+40	100	15.00	7.52	0.50	0.30	1.00	3.76	2.26	0.00	3.76	1.0	5.7	6"PAR	4	I	0.50	4.00	0.00	N/A
5	E	4+30	100	15.00	7.52	0.50	0.30	1.60	6.02	3.61	0.00	6.02	1.0	5.7	6"PAR	10	IA	0.50	15.00	0.00	N/A
6	F	4+30	100	15.00	7.52	0.50	0.30	2.00	7.52	4.51	0.00	7.52	1.0	5.7	6"PAR	10	IA	0.50	15.00	0.00	N/A
7	G	TPAL ESM'T	100	15.00	7.52	N/A	0.30	1.50	0.00	3.38	0.00	0.00	1.0	6.0	DITCH	2'x2'	V	0.50	8.00	0.00	N/A

Bench Mark 1  
"□" Top of concrete footing of Southwest corner of tower #12-3W-T291. Elev. 619.46  
Bench Mark 2  
"□" Top of curb South side of Proton Drive, 400' East of Les Lacs Ave. Elev. 611.31(Set)  
Bench Mark 3  
"□" Top of concrete footing of Northwest corner of tower #12-3W-T290. Elev. 613.08

**"As-Built Plans"**  
1-31-92



<b>DRAINAGE MAP</b>						
<b>WATERVIEW ESTATES</b>						
Town Of Addison, Texas						
<b>DON A. TIPTON, INC. CONSULTING ENGINEERS</b>						
6330 Belt Line Rd. ~ Suite C ~ Garland, Texas 75043						
DESIGN	DRAWN	DATE	SCALE	NOTES	FILE	NO.
d.a.t. Inc.	d.a.t. Inc.	8/91	1"=60'	d.b.	Waterview Estates 3626	<b>2</b>