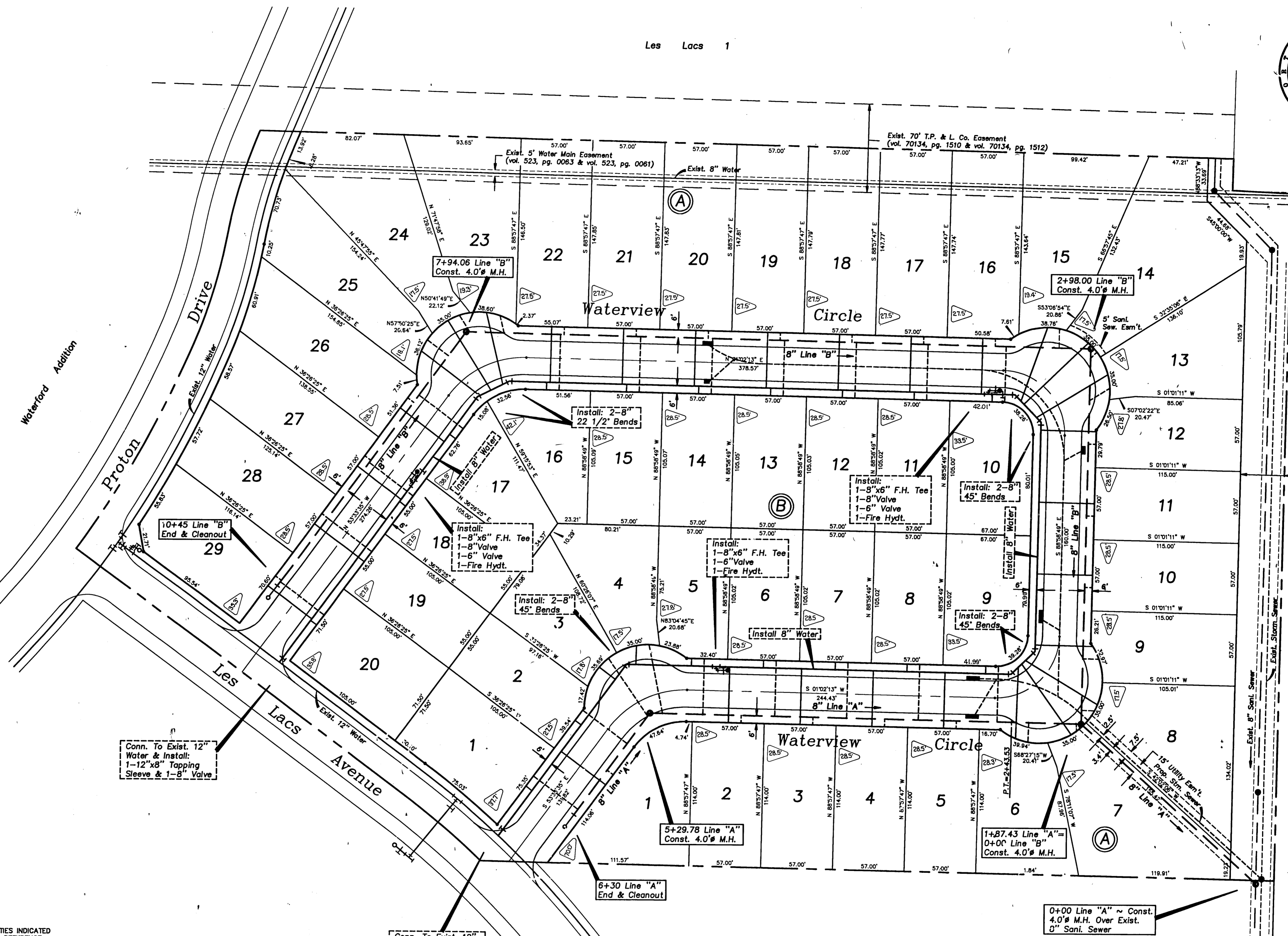


All water services to be installed in the center of each lot. All services to be 3/4". All sanitary sewer laterals to be installed 10' downstream of water services. All laterals to be 4".

Typical Service Detail

Waterford Addition



35' Greenbelt & Utility Easement To Be Dedicated To Town Of Addison
Loos Stadium & Fieldhouse
D. I. S. D.

CAUTION !!!
EXISTING UTILITIES

EXISTING UTILITIES AND UNDERGROUND FACILITIES INDICATED ON THESE PLANS HAVE BEEN LOCATED FROM REFERENCE INFORMATION. IT SHALL BE THE RESPONSIBILITY OF THE CONTRACTOR TO VERIFY BOTH HORIZONTALLY AND VERTICALLY THE LOCATION OF ALL EXISTING UTILITIES AND UNDERGROUND FACILITIES PRIOR TO CONSTRUCTION, TO TAKE NECESSARY PRECAUTIONS IN ORDER TO PROTECT ALL FACILITIES ENCOUNTERED. THE CONTRACTOR SHALL PRESERVE AND PROTECT ALL EXISTING UTILITIES FROM DAMAGE DURING CONSTRUCTION.

WE ARE AWARE OF THESE FACILITIES LOCATED IN THE PROXIMITY TO THIS PROJECT.
TU ELECTRIC COMPANY 323-8928
LONE STAR GAS COMPANY 487-3885
SOUTHWESTERN BELL TELEPHONE 484-4095
STORER CABLE 840-2388

"As-Built Notes"

- 1. Denotes distance & direction from lot corner to water services.
- 2. All sanitary sewer laterals are located 10' downstream from water services.

Conn. To Exist. 12" Water & Install: 1-12"x8" Tapping Sleeve & 1-8" Valve

Conn. To Exist. 12" Water & Install: 1-12"x8" Tapping Sleeve & 1-8" Valve

Villages Of Les Lacs II

TRENCH SAFETY PLANS & SPEC'S TO BE FURNISHED BY UTILITY CONT. PRIOR TO CONSTRUCTION

"As-Built Plans"
1-31-92



WATER & SEWER PLAN						
WATERVIEW ESTATES						
Town Of Addison, Texas						
		DON A. TIPTON, INC. CONSULTING ENGINEERS				
6330 Belt Line Rd. ~ Suite C ~ Garland, Texas 75043						
DESIGN	DRAWN	DATE	SCALE	NOTES	FILE	NO.
d.a.t.	inc.	8/91	1"=40'		Waterview Estates 3628/	6