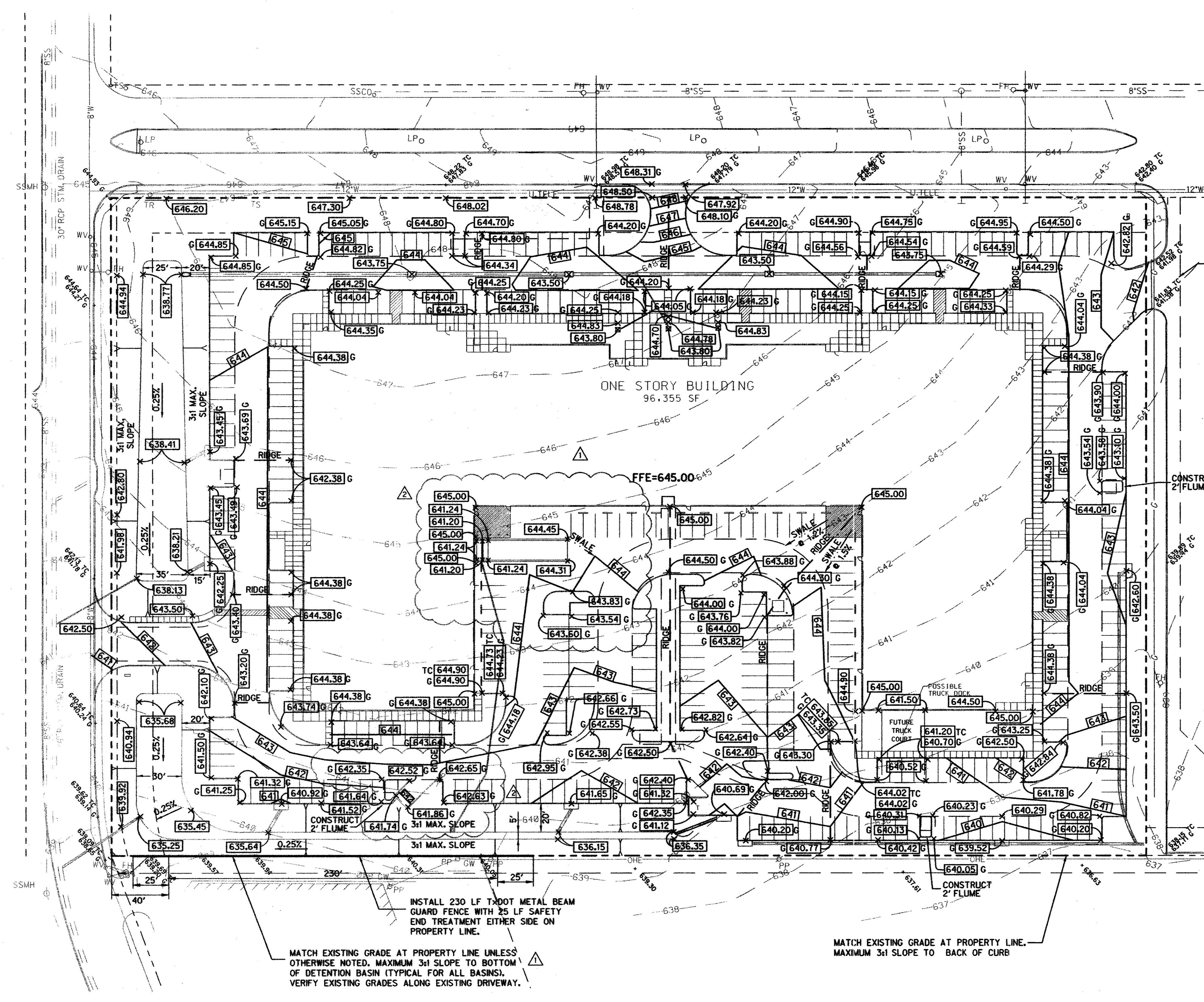
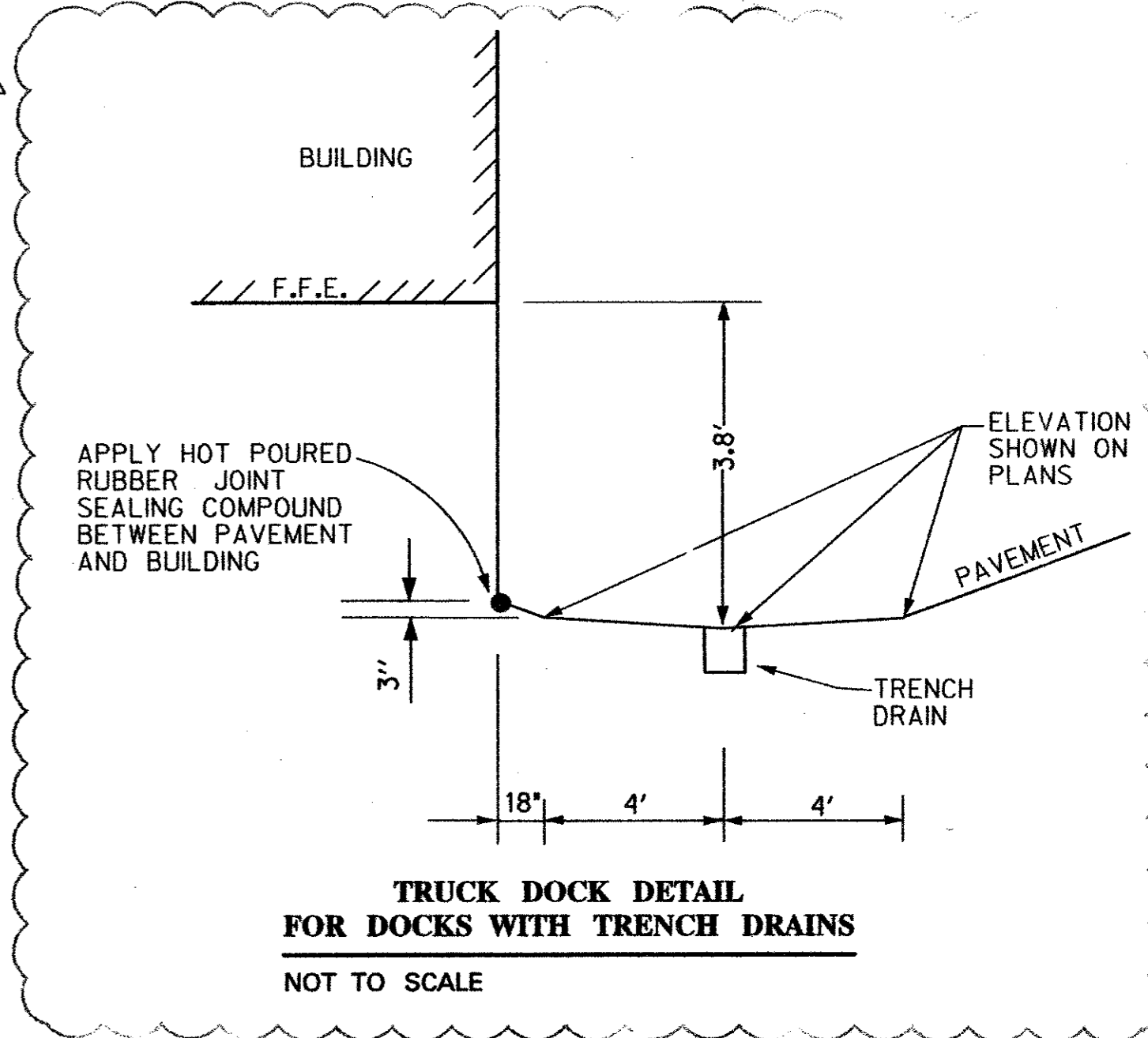


- GRADING NOTES**
- Existing Utilities shown are taken from available records provided by the Utility Owner and field locations of surface appurtenances. Locations shown are generally schematic in nature and may not accurately reflect the size and location of each particular utility. Some utility lines may not be shown. Contractor shall assume responsibility for actual field location and protection of existing facilities whether shown or not. Contractor shall also assume responsibility for repairs to existing facilities, whether shown or not, damaged by contractor's activities. Differences in horizontal or vertical location of existing utilities shall not be a basis for additional expense.
  - Pavement removal and repair shall conform to Town of Addison standards. All sawcuts shall be full depth cuts. Contractor shall make efforts to protect concrete and/or asphalt edges. Any large spalled or broken edges shall be removed by sawcutting pavement prior to replacement. See sheet C-8 for additional paving notes and details.
  - Contractor shall maintain positive drainage at all times during construction. Ponding of water in streets, drives, truck courts, trenches, etc. will not be allowed.
  - Inlets, pipes and other drainage appurtenance construction and installation shall conform to Town of Addison standards.
  - Contractor shall locate and adjust existing utility manhole lids, cleanouts, water valves and other surface appurtenances as required for new construction. Contractor shall coordinate utility adjustments with appropriate utility agencies.
  - The existing spot elevations and planimetric data shown taken from survey conducted by Half Assoc., Inc. on June 21, 1999. Surface appurtenances of underground utilities shown are also taken from same survey.
  - Contractor shall be responsible for adjusting all underground and surface utility appurtenances as required for new construction. Contractor shall also provide all fees for permits, connections, inspections, etc.
  - Contractor's work shall include pavement removal and disposal required for new walk, drive, curb, gutter. Contractor shall be responsible for all coordination, inspection and testing required by the Owner or the Town of Addison.
  - For pavement thickness refer to Sheet C-8. Use minimum 5" thick 4000 p.s.i. reinforced concrete pavement with #3 bars @ 18" on center, over scarified and recompacted subgrade.
  - See sheet C-1, C-3 and C-4 for drainage areas, storm drain layout and drainage calculations.
  - See Note 2 on Sheet C-3 for trench excavations.
  - Site grading and pavement subgrade shall be prepared in accordance with the Geotechnical Exploration Report No.1 for project #5817 by Reed Engineering Group, dated August 27, 1999.

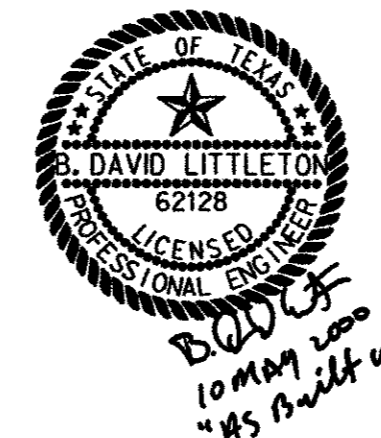


**LEGEND**

— 616 —	EXIST. CONTOUR	FF ±519.50	PROP. FINISH FLOOR ELEVATION
[617]	PROP. CONTOUR	→	FLOW DIRECTION
— 622.40 —	PROP. SPOT ELEVATION	—	RIDGE LINE
— 602.00 —	PROP. SPOT ELEV. GUTTER	(C)	TREE/HEDGE
— 602.50 —	PROP. SPOT ELEV. TOP CURB	GW	GUY WIRE
604.0TC	EXIST. TOP OF CURB ELEVATION	PP	POWER POLE
604.52G	EXIST. GUTTER ELEV.	FH	FIRE HYDRANT
EX. 2" G	EXIST. GAS LINE	WV	WATER VALVE
EX. 8" S	EXIST. SANITARY SEWER	WM	WATER METER
EX. 12" W	EXIST. WATER LINE	TS	TELEPHONE SIGN
EX. E	EXIST. OVERHEAD ELECTRIC	TR	TRAFFIC SIGN
24" RCP	EXIST. STORM DRAIN	LP	LIGHT POLE
SSMH	SANITARY SEWER MANHOLE	FOS	FIBER OPTIC SIGN
STM. MH	STORM DRAIN MANHOLE	TCF	TELEPHONE CABLE FLAG
WTR. MH	WATER MANHOLE	OE	OVERHEAD ELECTRIC
SSCO	SANITARY SEWER CLEAN-OUT	OT	OVERHEAD TELEPHONE
□	EXISTING STORM DRAIN INLET	□	TELEPHONE MANHOLE
□	PROPOSED STORM DRAIN INLET	□	TELEPHONE JUNCTION BOX
		—	SIGN
		SWBT	SOUTHWESTERN BELL TELEPHONE CO.
		LSG	LONESTAR GAS CO.
		TU	TEXAS UTILITIES CO.
		GTE	GENERAL TELEPHONE CO.



- △ "AS BUILT" BASED ON FIELD OBSERVATIONS OF SURFACE FEATURES ON MAY 4, 2000 AND CONTRACTOR PROVIDED INFORMATION. ELEVATIONS NOT FIELD VERIFIED. PARKING STRIPING NOT COMPLETED IN FIELD.
- △ 02-08-00 ADDED TRUCK DOCK, ADJUSTED GRADES AROUND RE-LOCATED DUMPSTER.
- △ 11-16-99 ADDITION OF BARRIER AT SOUTHWEST SIDE OF PROPERTY. ADJUSTMENT TO MOST GRADES DUE TO RELOCATION OF DUMPSTER AND MODIFICATIONS TO SIDEWALKS ALONG BUILDING.



*10 MAY 2000  
"AS BUILT" UPDATE*

BENCHMARK:  
"X" CUT IN CONCRETE AS THE NORTHWEST CORNER OF THE SUBJECT TRACT.  
ELEV = 645.20

GRADING PLAN						
ADDISON COM CENTER						
JACKSON - SHAW COMPANY						
TOWN OF ADDISON, TEXAS						
<b>Half Associates</b> <small>ENGINEERS • ARCHITECTS • SCIENTISTS • PLANNERS • SURVEYORS</small>						
DESIGN	DRAWN	DATE	SCALE	NOTES	FILE	NO.
HALF	CADD	SEPTEMBER 1999	1" = 40'	AVO 17986 986GRAD		C-2