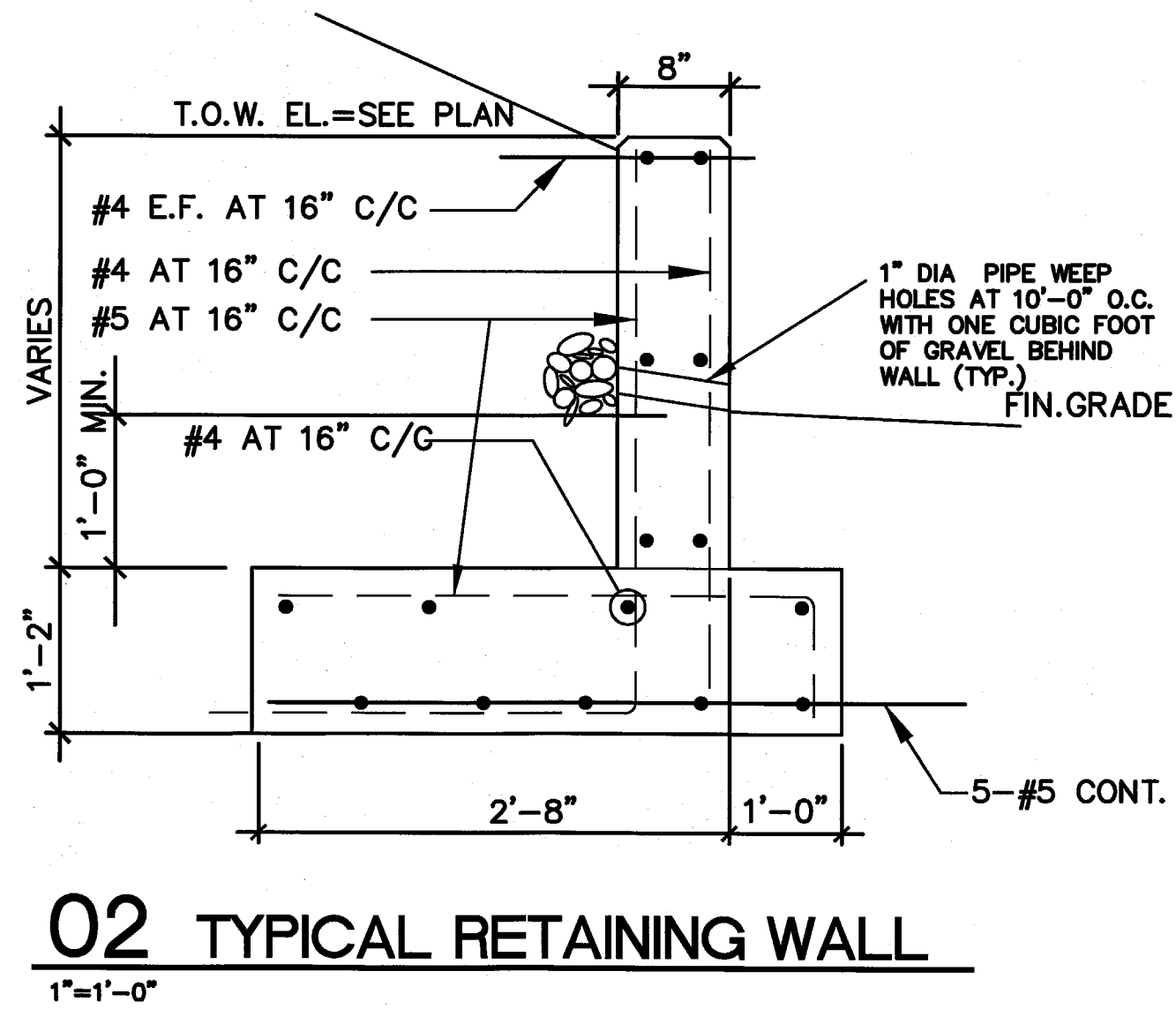
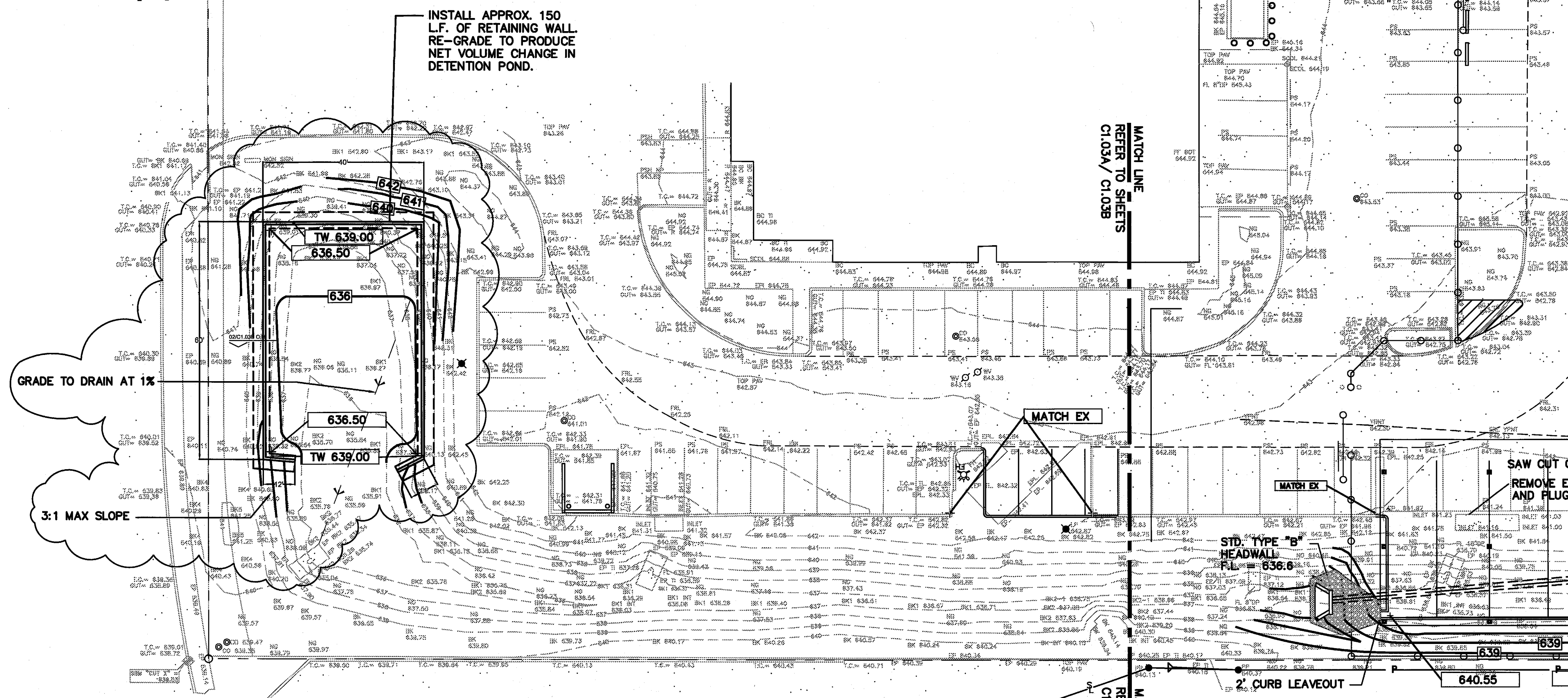


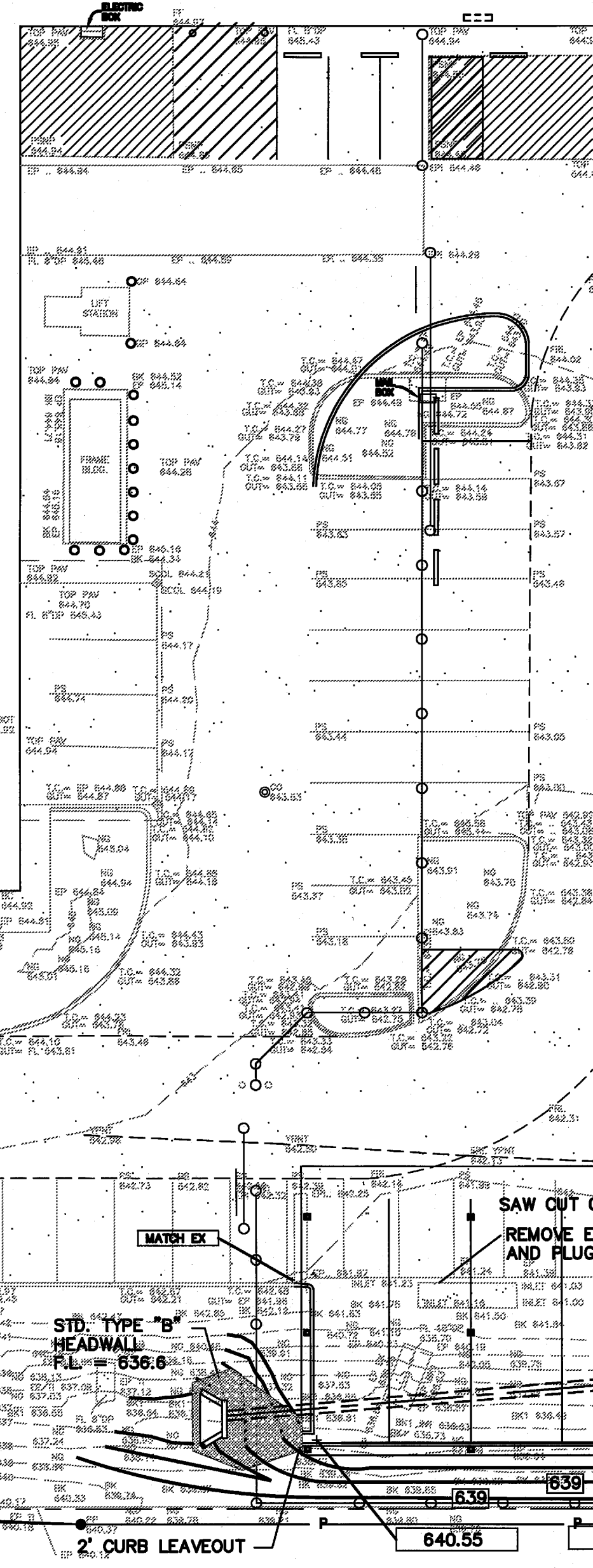
WESTGROVE DRIVE



02 TYPICAL RETAINING WALL
1"=1'-0"



01 PARTIAL GRADING PLAN
1"=20'



- LEGEND**
- PROPERTY BOUNDARY
 - 100 PROPOSED SPOT ELEVATION
 - 100 PROPOSED CONTOUR
 - 100 EXISTING CONTOUR
 - + 100.00 EXISTING SPOT ELEVATION
 - STEEL PIN FOUND
 - STEEL PIPE FOUND
 - 3/8" STEEL PIN SET
 - W/M WATER METER
 - G/M GAS METER
 - ⊕ FIRE HYDRANT
 - ⊕ MANHOLE
- NOTE: SPOT ELEVATIONS ARE TOP OF PAVEMENT U.N.O.
FINISHED FLOOR ELEVATION 645.00

PROJECT:
UNITED STATES ENVIRONMENTAL PROTECTION AGENCY
 16650 WESTGROVE DRIVE SUITES 200 & 300 ADDISON, TEXAS 75001
 CITY PROJECT NUMBER PW# 2008-20

ARCHITECT
 3311 Elm Street, Suite 105
 Dallas, Texas 75226
 214-742-6044
 214-742-6041 Fax

ARCHITECT'S SEAL:

CONSULTANT:

TMBP
 CONSULTING ENGINEERS INC.
 2301 N. AKARD ST. SUITE 400
 DALLAS, TEXAS 75201
 (214) 871-3302 (214) 871-8718 FAX
 "THE SEAL APPEARING ON THIS DOCUMENT WAS AUTHORIZED BY JOSEPH T. PITT, P.E. 33944 ON APRIL 8, 2008."

ISSUE HISTORY:

REVISION	DATE
CITY REVIEW	01/07/09
CITY COMMENT	04/09/09
CONTRACTOR'S PRICING	04/28/09
CITY COMMENT	05/14/09
CITY COMMENT	05/18/09
CITY COMMENT	05/20/09

DRAWING INFO:
 FILE:
 CURRENT ISSUE:
 DRAWN BY: RGM
 CHECKED BY: JTP
 SHEET NUMBER:

PAVING AND GRADING PLAN
C1.03B