

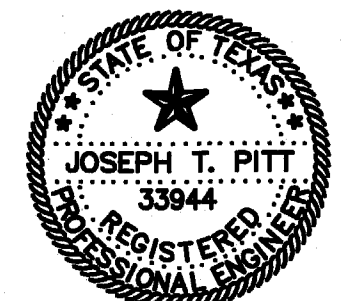
ARCHITECT



3311 Elm Street, Suite 105
 Dallas, Texas 75226
 214-742-6044
 214-742-6041 Fax

ARCHITECT'S
 SEAL:

CONSULTANT:



TMBP
 CONSULTING ENGINEERS INC.
 2301 N. AKARD ST. SUITE 400
 DALLAS, TEXAS 75205
 (214) 671-2300 (214) 671-8718 FAX
 "THE SEAL APPEARING ON THIS
 DOCUMENT WAS AUTHORIZED BY
 JOSEPH T. PITT, P.E. 33844 ON
 APRIL 8, 2009"

ISSUE HISTORY:

| | |
|----------------------|----------|
| CITY REVIEW | 01/07/09 |
| CITY COMMENT | 04/09/09 |
| CONTRACTOR'S PRICING | 04/28/09 |
| CITY COMMENT | 05/14/09 |
| CITY COMMENT | 05/18/09 |
| CITY COMMENT | 05/20/09 |
| | |
| | |
| | |

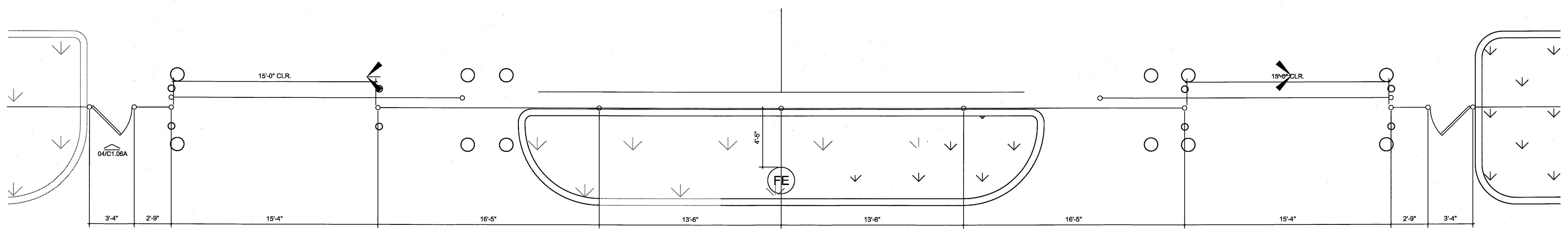
DRAWING INFO:

FILE:
 CURRENT ISSUE:
 DRAWN BY:
 CHECKED BY: JTP

SHEET NUMBER:

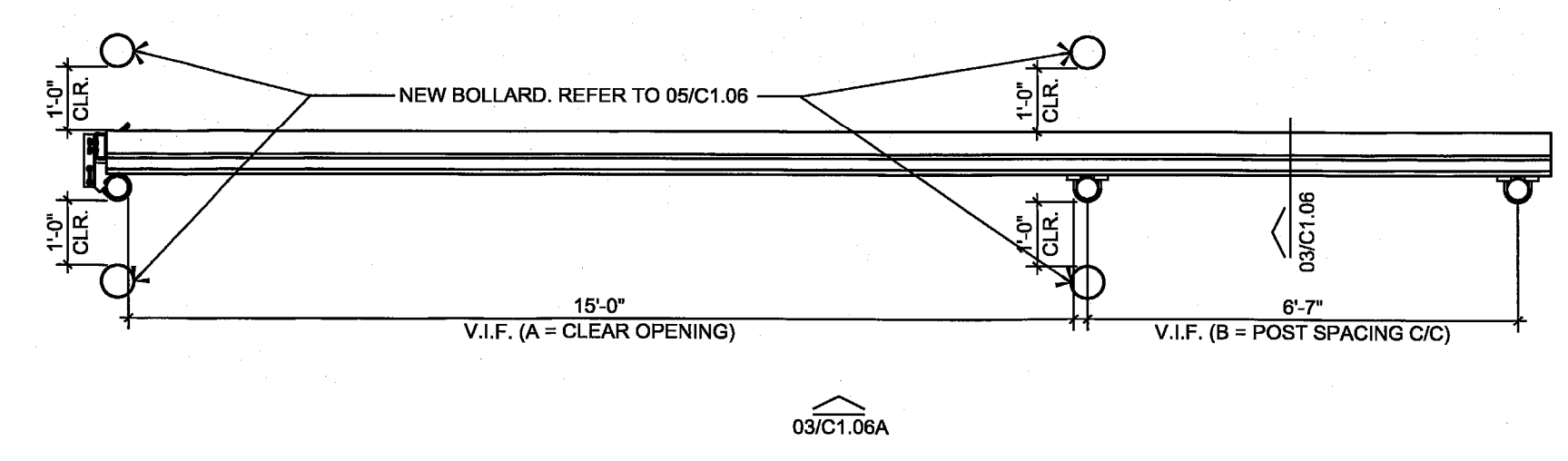
SITE DETAILS

C1.06a

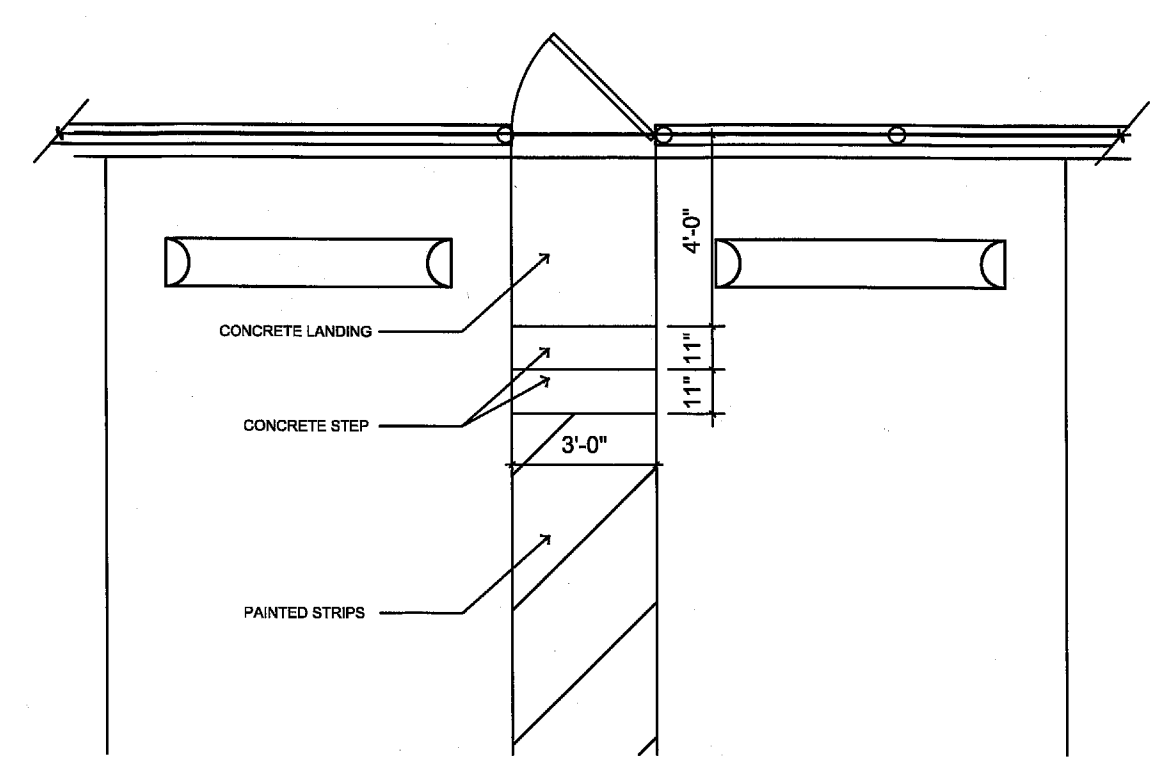


01 ENLARGED PLAN @ GATE
 1/4"=1'-0"

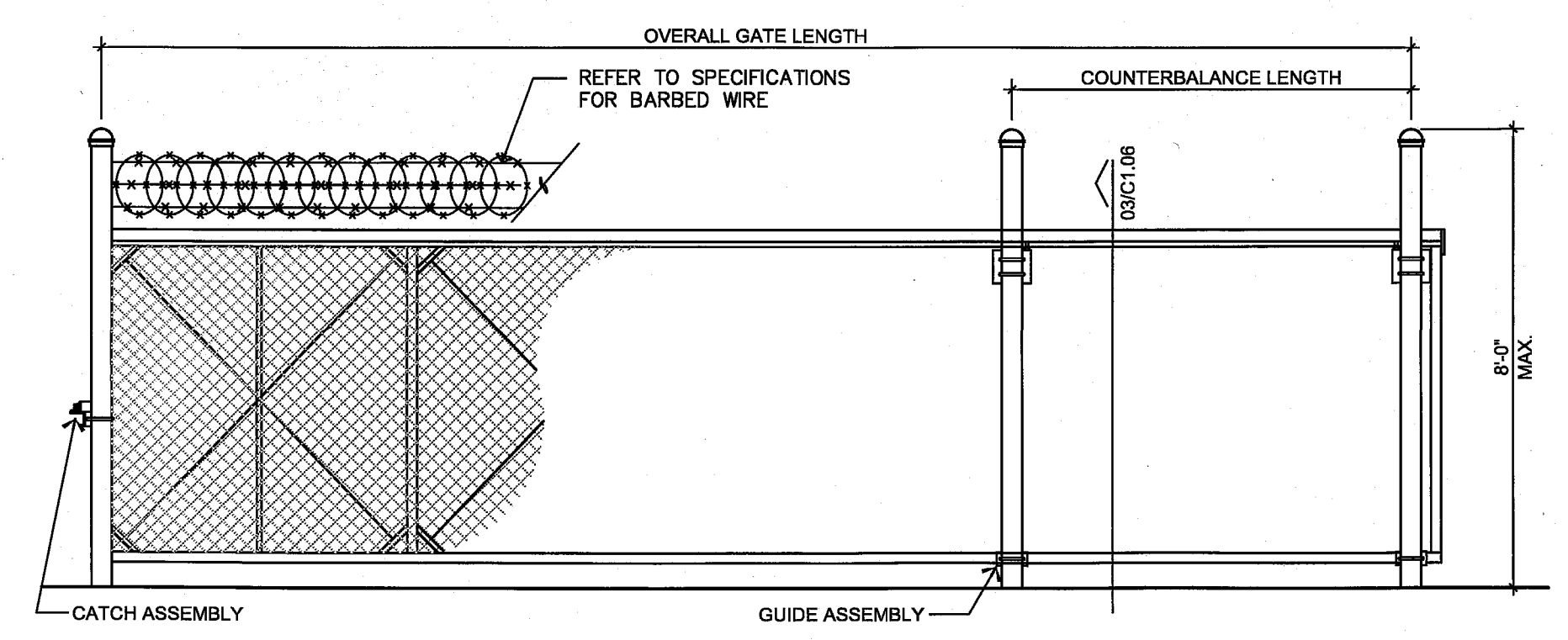
| MARK | DESCRIPTION | FORMULA | DIM. |
|------|---------------------------------|-----------|------|
| A | CLEAR OPENING | A | - |
| B | COUNTERBALANCE POST SPACING C/C | (A/2)-11" | - |
| C | OVERALL GATE LENGTH | A x 1.5 | - |
| D | COUNTERBALANCE LENGTH | A x 0.5 | - |
| E | NOMINAL GATE HEIGHT | E | - |
| F | POST HEIGHT (W BARB ARMS) | E + 1'-6" | - |
| G | FABRIC HEIGHT | E - 1'-0" | - |



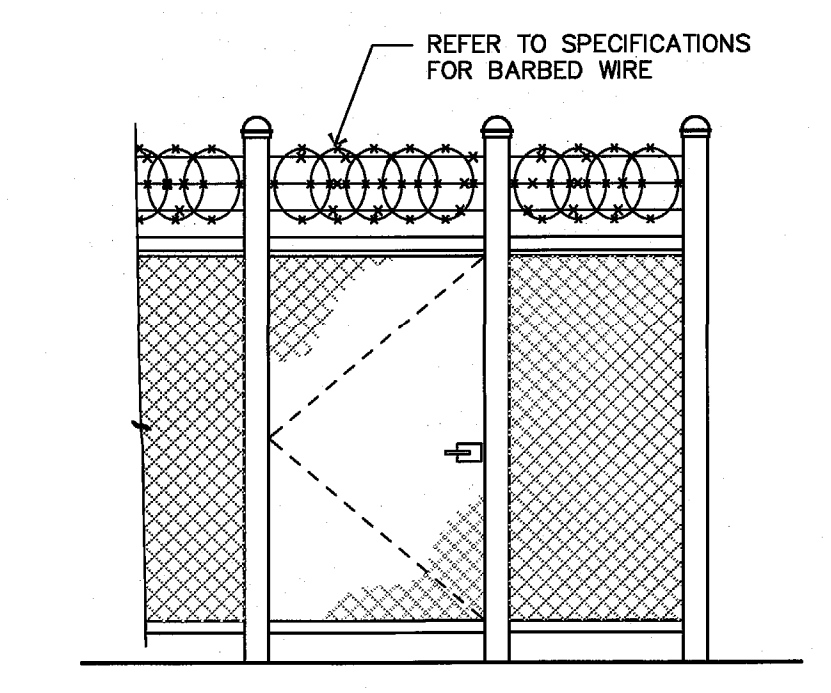
02 PLAN @ GATE
 3/8"=1'-0"



05 ENLARGED PLAN @ FIREMAN'S GATE
 1/4"=1'-0"



03 ELEVATION @ PARKING GATE
 3/8"=1'-0"



04 ELEVATION @ PEDESTRIAN GATE
 3/8"=1'-0"