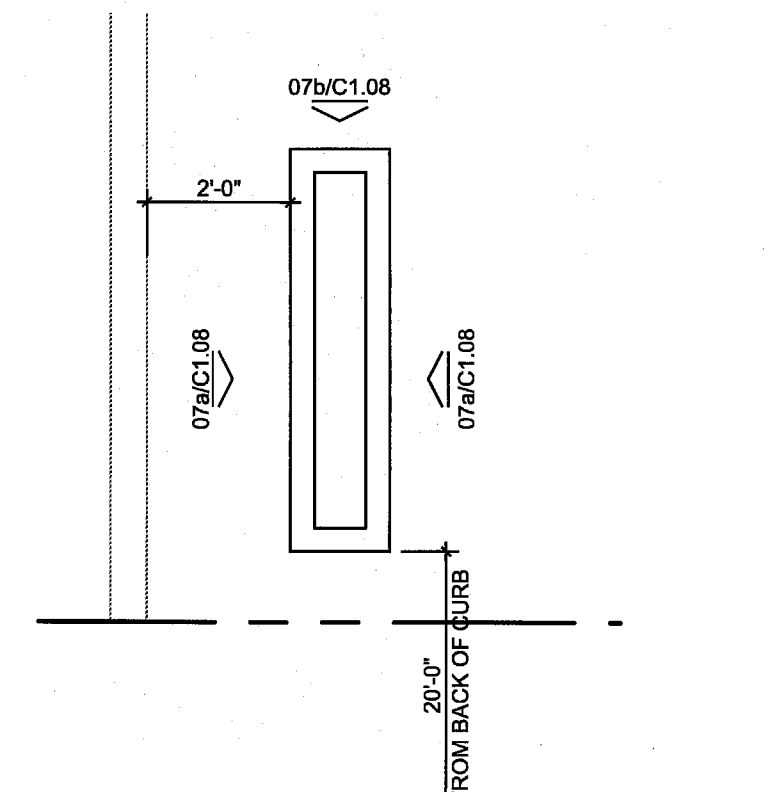
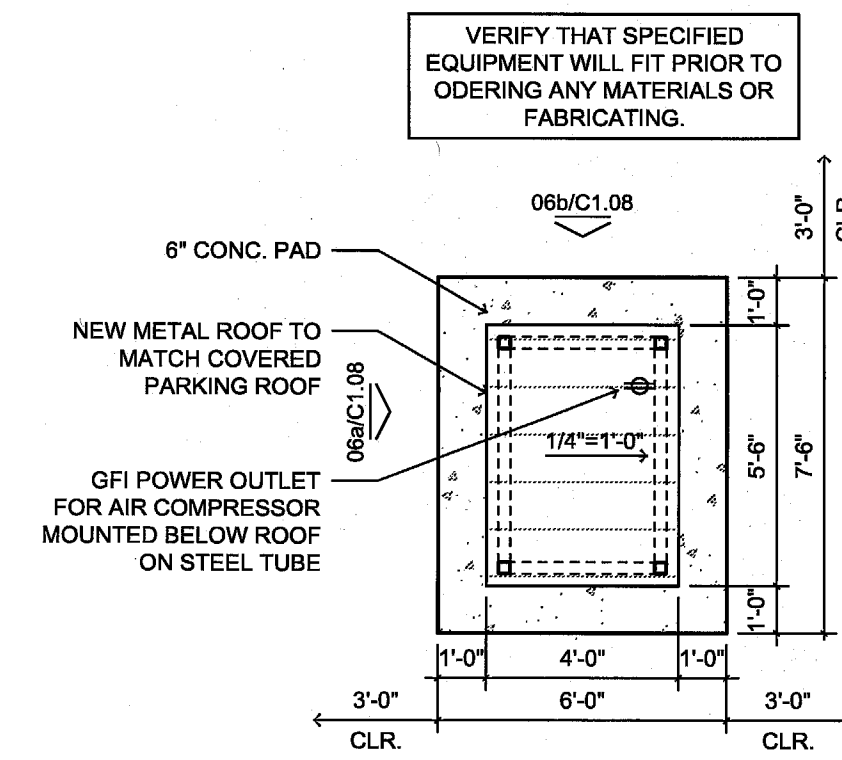


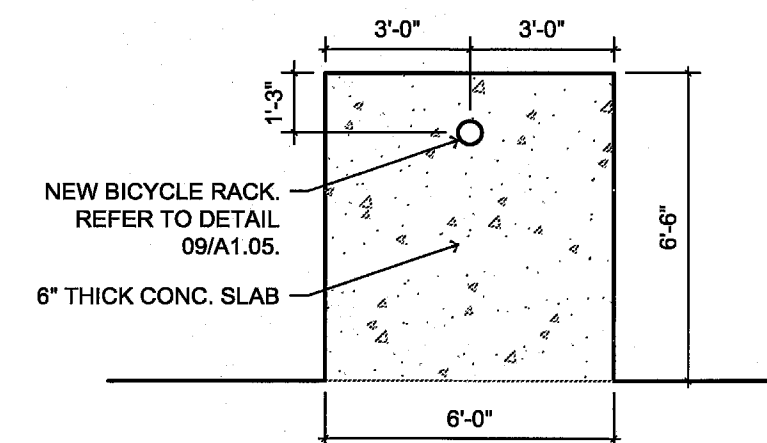
01 PLAN @ FLAG POLE
1/4"=1'-0"



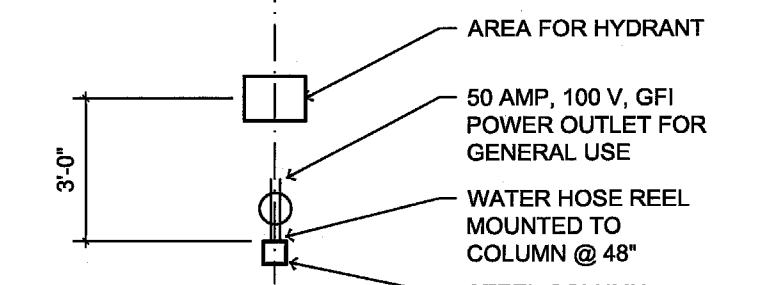
02 PLAN @ SIGN
3/8"=1'-0"



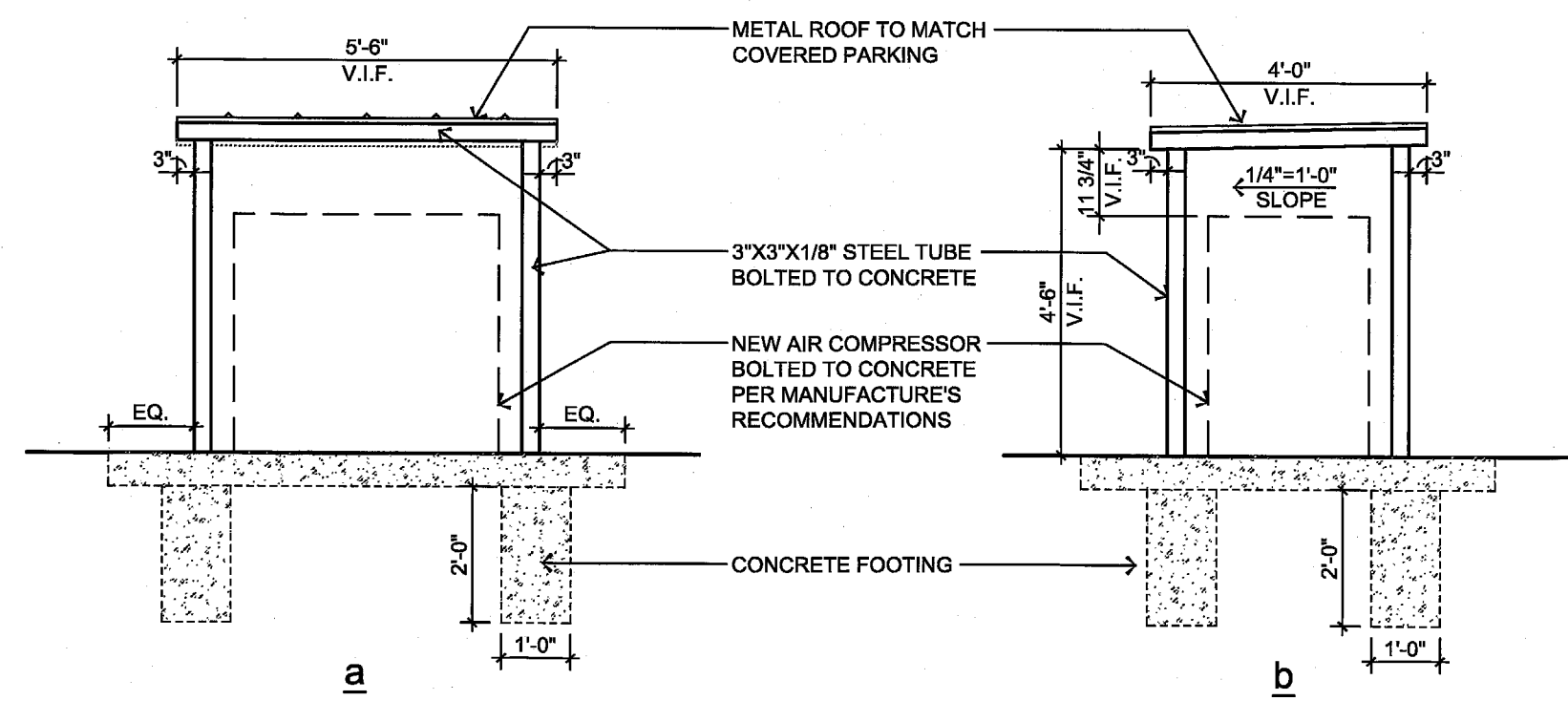
03 PLAN @ AIR COMPRESSOR
1/4"=1'-0"



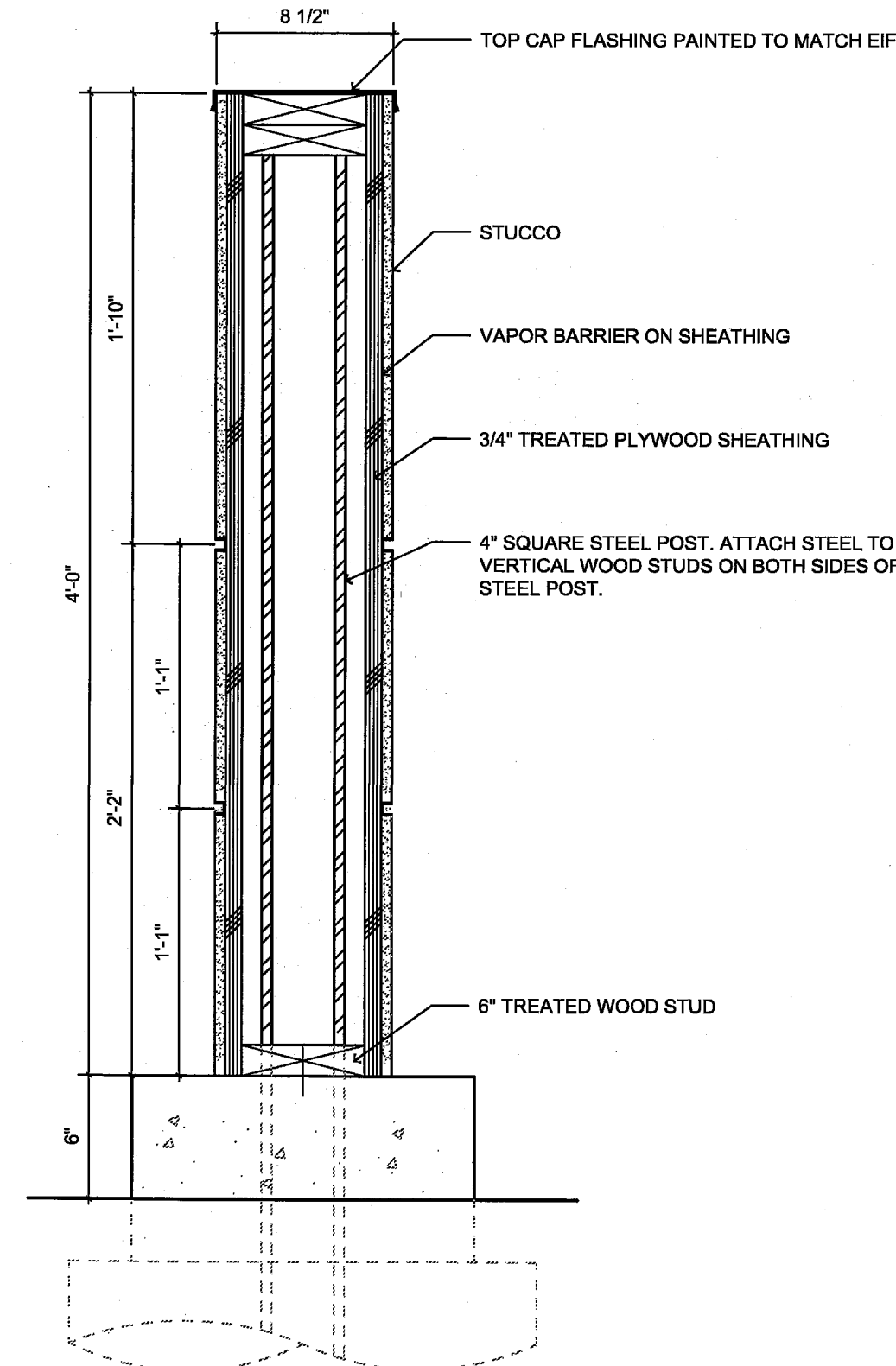
04 PLAN @ BICYCLE POST
1/4"=1'-0"



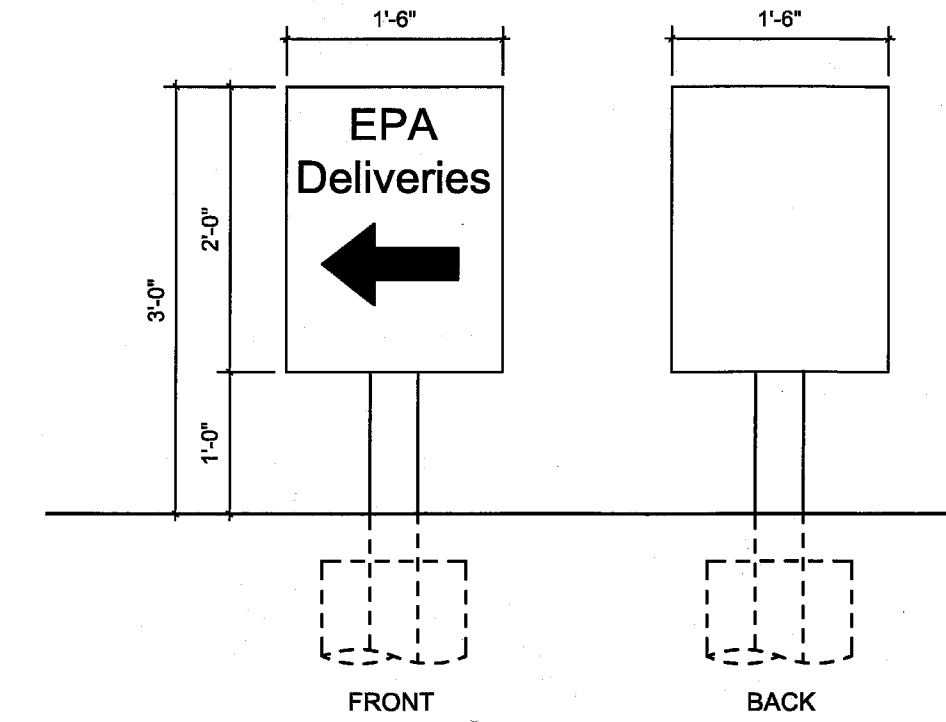
05 PLAN @ WATER HYDRANT
1/4"=1'-0"



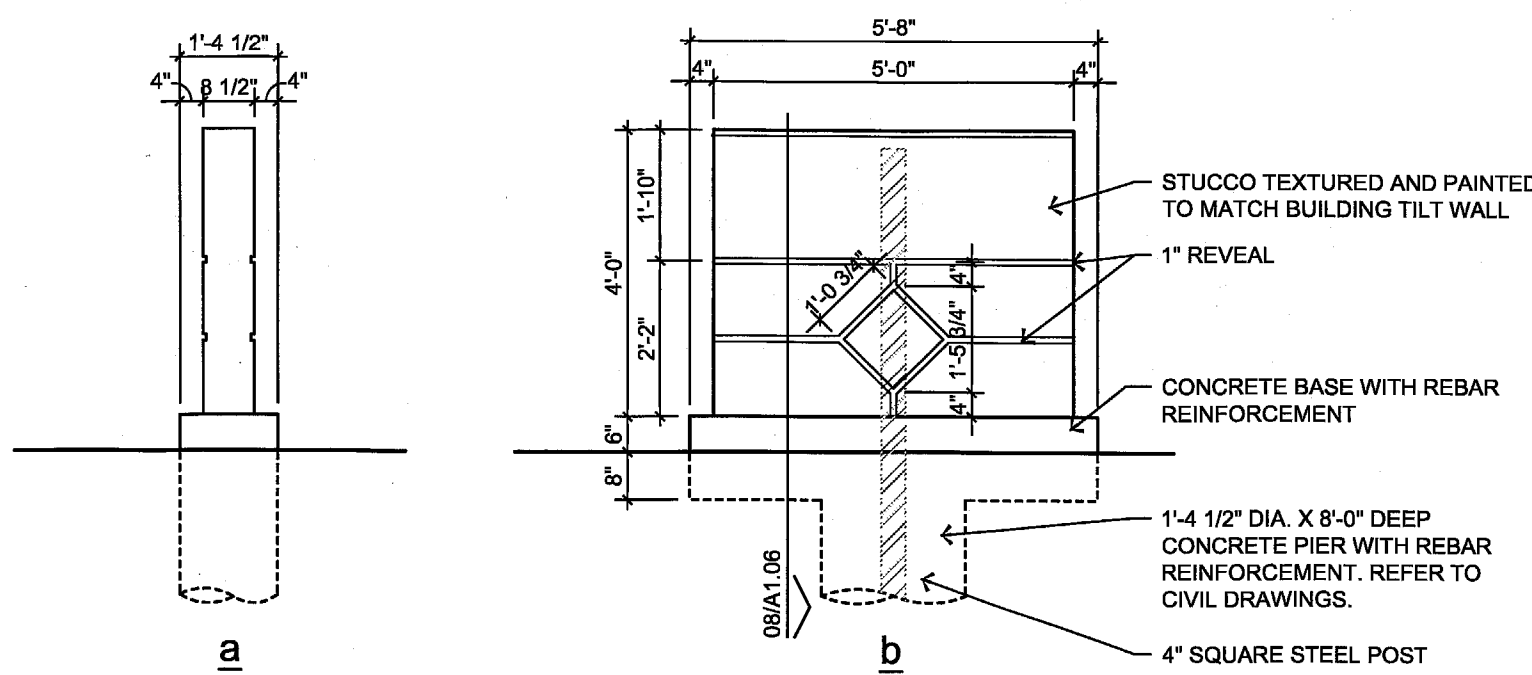
06 ELEVATION @ COMPRESSOR
3/8"=1'-0"



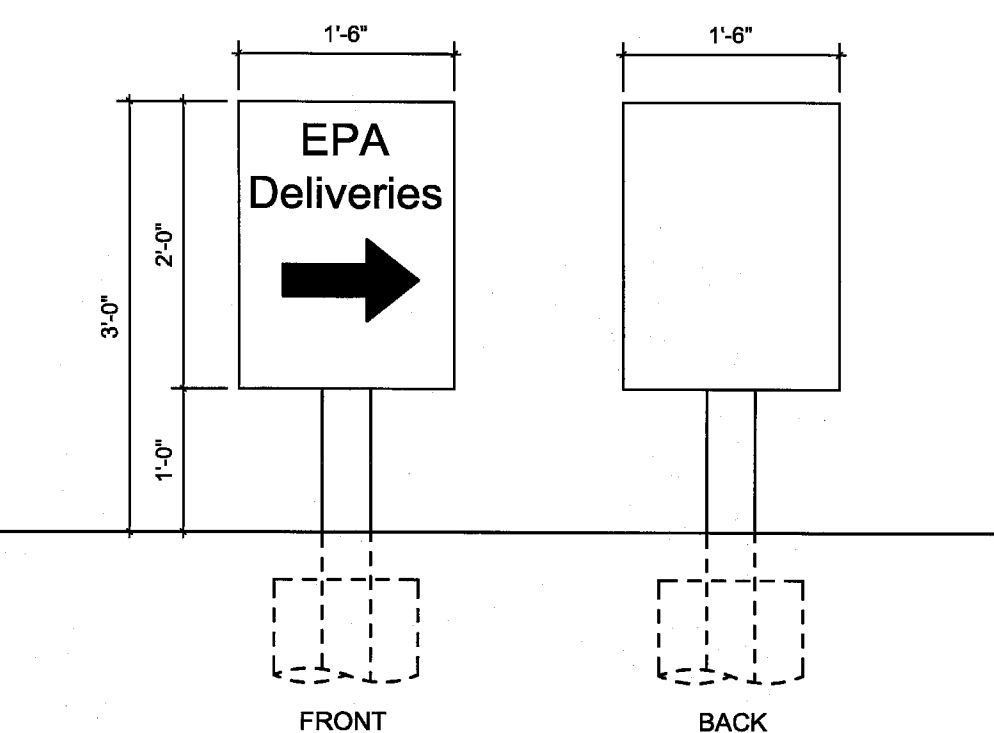
08 MONUMENT DETAIL
1-1/2"=1'-0"



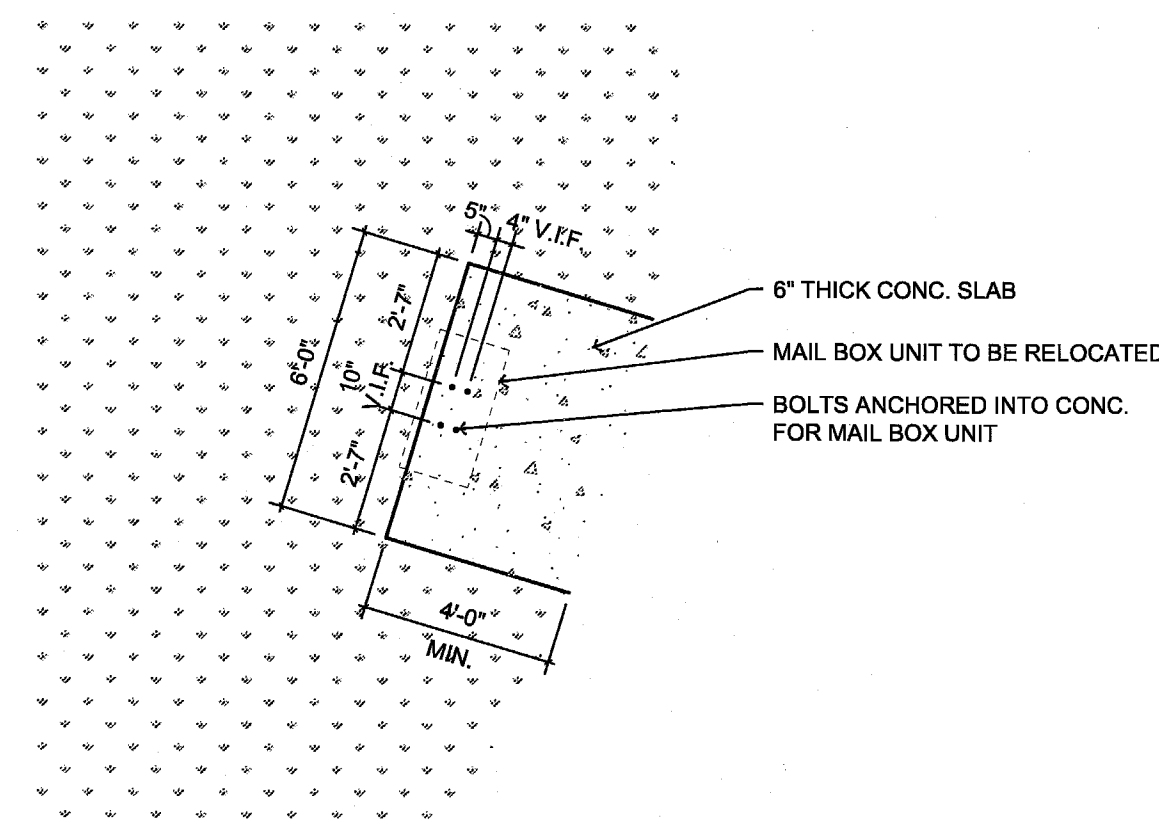
11 DIRECTIONAL SIGN
3/4"=1'-0"



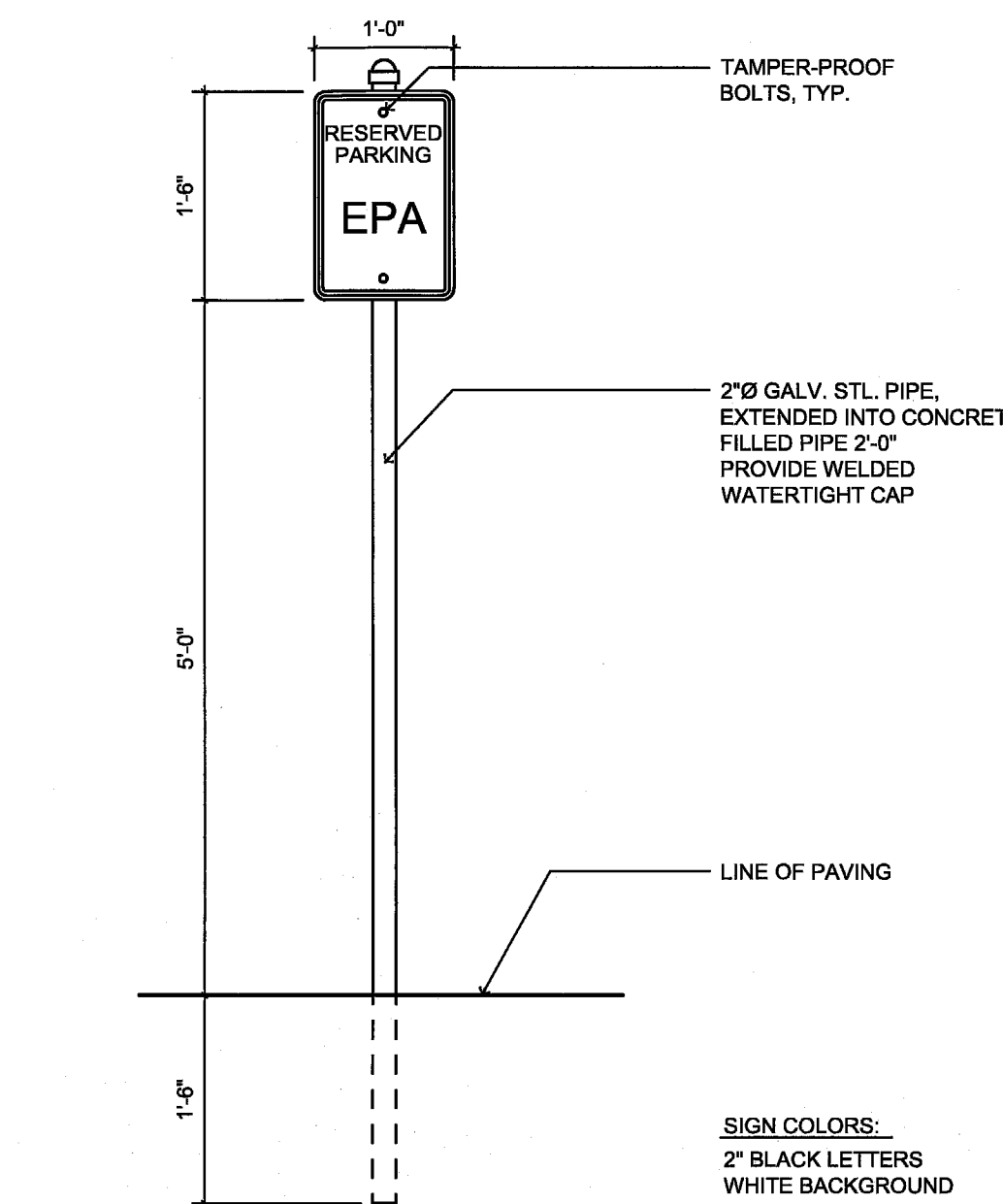
07 MONUMENT SIGN
3/8"=1'-0"



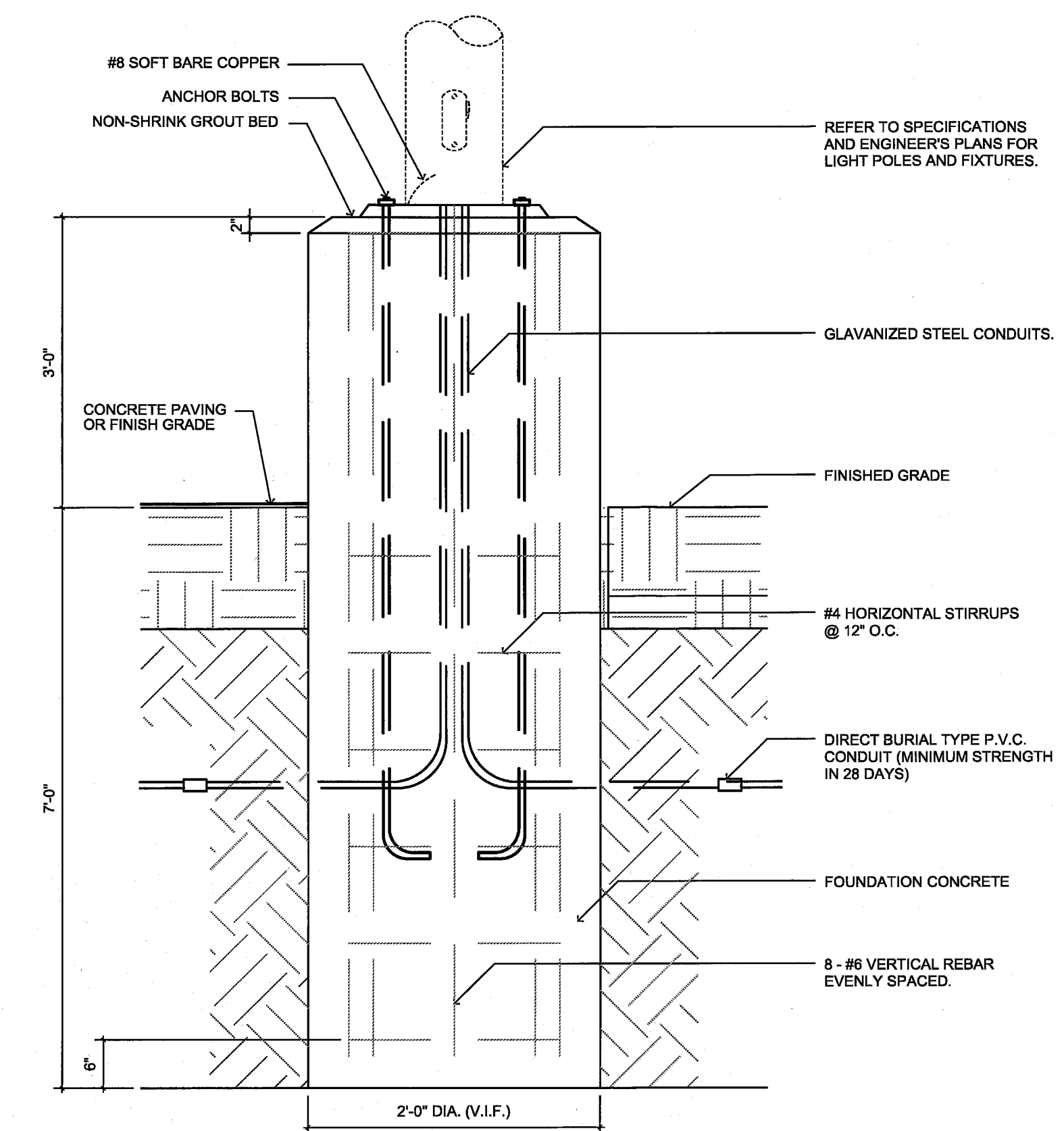
09 DIRECTIONAL SIGN
3/4"=1'-0"



10 PLAN @ MAIL BOX PAD
1/4"=1'-0"



12 DETAIL @ HC SIGN MOUNTED ON BUILDING
3/4"=1'-0"



13 DETAIL @ PARKING LIGHT FOUNDATION
3/4"=1'-0"

PROJECT:
UNITED STATES ENVIRONMENTAL PROTECTION AGENCY
16650 WESTGROVE DRIVE SUITES 200 & 300 ADDISON, TEXAS 75001
CITY PROJECT NUMBER PW# 2008-20



3111 Elm Street, Suite 105
Dallas, Texas 75226
214-742-6044
214-742-6041 Fax

ARCHITECT'S SEAL:

CONSULTANT:

TMBP
CONSULTING ENGINEERS INC.
2301 N. AVARD ST. SUITE 405
DALLAS, TEXAS 75205
(214) 871-2302 (214) 871-8718 FAX
"THE SEAL APPEARING ON THIS DOCUMENT WAS AUTHORIZED BY JOSEPH T. PITT, P.E. 33944 ON APRIL 8, 2008"

ISSUE HISTORY:

CITY REVIEW	01/07/09
CITY COMMENT	04/09/09
CONTRACTOR'S PRICING	04/28/09
CITY COMMENT	05/14/09
CITY COMMENT	05/18/09
CITY COMMENT	05/20/09

DRAWING INFO:
FILE:
CURRENT ISSUE:
DRAWN BY:
CHECKED BY: JTP

SHEET NUMBER:
SITE DETAILS
C1.08