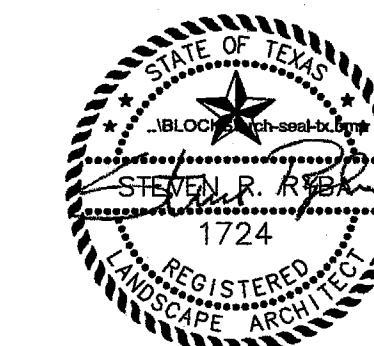


ARCHITECT



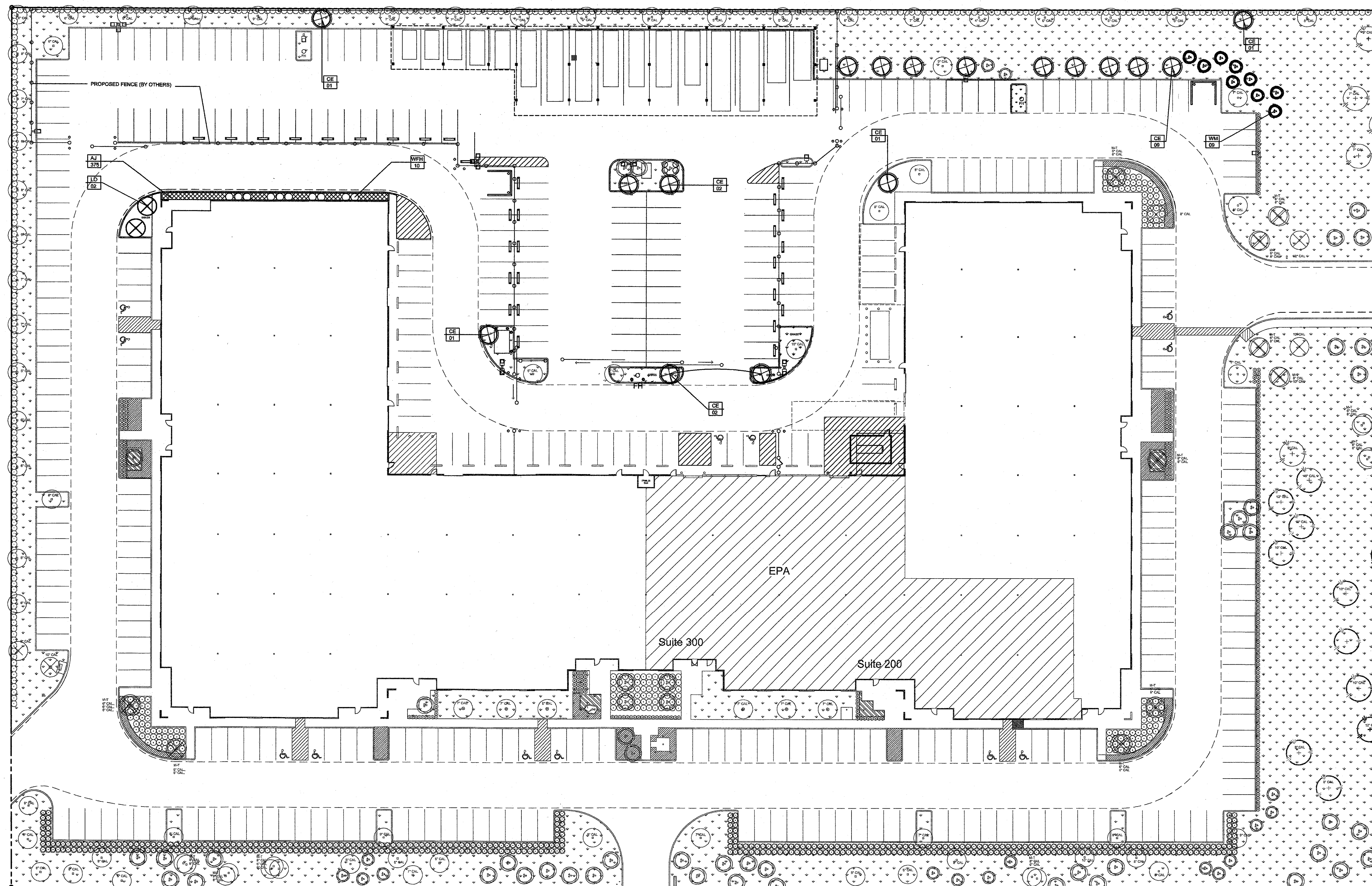
3311 Elm Street, Suite 105
 Dallas, Texas 75226
 214-742-6044
 214-742-6041 Fax

ARCHITECT'S SEAL:



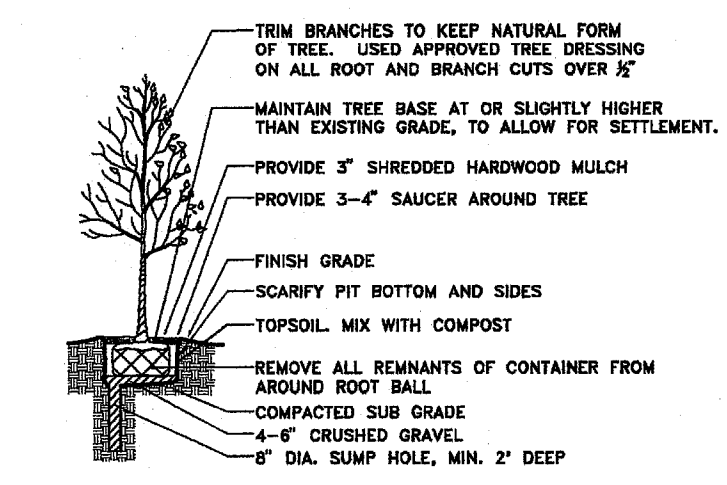
SIGNATURE
 11/05/08
 SEALED

CONSULTANT:

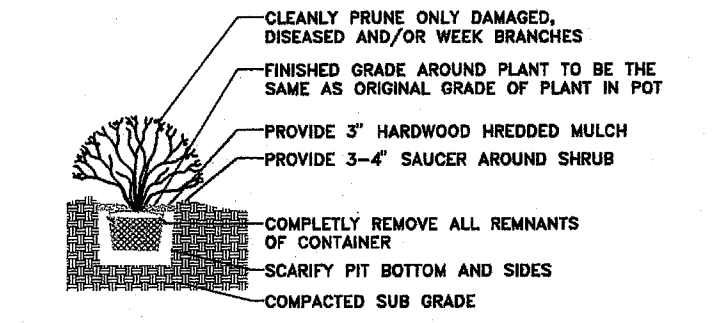


WESTGROVE DRIVE

02 TREE PLANTING DETAIL NTS



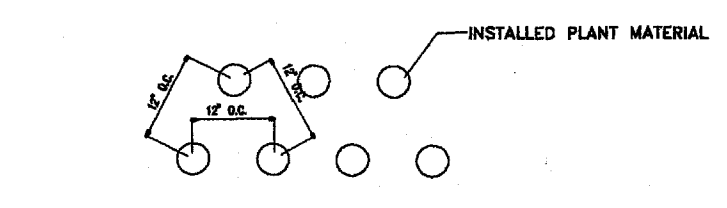
- TRIM BRANCHES TO KEEP NATURAL FORM OF TREE. USED APPROVED TREE BRACING ON ALL ROOT AND BRANCH CUTS OVER 1/2"
- MAINTAIN TREE BASE AT OR SLIGHTLY HIGHER THAN EXISTING GRADE, TO ALLOW FOR SETTLEMENT.
- PROVIDE 3" SHREDED HARDWOOD MULCH PROVIDE 3-4" SAUCER AROUND TREE
- FINISH GRADE
- SCAFFRY PIT BOTTOM AND SIDES
- TOPSOIL MIX WITH COMPOST
- REMOVE ALL REMNANTS OF CONTAINER FROM AROUND ROOT BALL
- COMPACTED SUB GRADE
- 4-6" CRUSHED GRAVEL
- 8" DIA. SUMP HOLE, MIN. 2" DEEP



- CLEANLY PRUNE ONLY DAMAGED, DISEASED AND/OR WEEK BRANCHES
- FINISH GRADE AROUND PLANT TO BE THE SAME AS ORIGINAL GRADE OF PLANT IN POT
- PROVIDE 3" HARDWOOD SHREDED MULCH PROVIDE 3-4" SAUCER AROUND SHRUB
- COMPLETELY REMOVE ALL REMNANTS OF CONTAINER
- SCAFFRY PIT BOTTOM AND SIDES
- COMPACTED SUB GRADE

- NOTES:
1. USE TOPSOIL COMPOST MIX TO BACKFILL
 2. FERTILIZE AND WATER THOROUGHLY AFTER INSTALLATION
 3. LOCATE ENTIRE SHRUB BED AS SHOWN
 4. NO SHRUB, EDGE OF ROOT BALL, SHALL BE PLANTED CLOSER THAN 2" FROM FOUNDATION OF BUILDING.

03 SHRUB PLANTING DETAIL NTS



- INSTALLED PLANT MATERIAL

- NOTES:
1. THE "ON CENTERS" MAY VARY PER PLANT TYPE. REFER TO PLANT SCHEDULE FOR VARIOUS "ON CENTERS".

04 GROUND COVER DETAIL NTS

PERVIOUS AREA REMOVED

PERVIOUS (LANDSCAPE) AREA REMOVED	11,967 SF
PERVIOUS (LANDSCAPE) AREA ADDED	-1,547 SF
TOTAL, IMPROVMENT, LANDSCAPE AREA ADDED	10,420 SF

LANDSCAPE CALCULATIONS

TOTAL SITE	338,123 SF (+/- 7.7 AC.)
TOTAL LANDSCAPE AREA EXISTING	87,994 SF
LANDSCAPE AREA REMOVED	10,420 SF
LANDSCAPE AREA ADDED	-1,547 SF
TOTAL SITE, LANDSCAPE AREA PROVIDED	78,127 SF (+/- 23.4 %)

TREE MITIGATION
 87 TOTAL CALIPER INCH REMOVED
 87 TOTAL CALIPER INCH PROVIDED
 9 ORNAMENTAL TREES REMOVED (8-12 HT.)
 9 ORNAMENTAL TREES PROVIDED (8-12 HT.)

01 LANDSCAPE PLAN

ADDED PLANT MATERIAL		EXISTING PLANT MATERIAL	
	CEDAR ELM		EXISTING SHADE TREES REMAINING (CEDAR ELM)
	LIVE OAK		EXISTING ORNAMENTAL TREES REMAINING (CRAPE MYRTLE)
	WAX MYRTLE / 8-10' HT.		EXISTING ORNAMENTAL TREES REMAINING (WAX MYRTLE)
	WILL FLEMING HOLLY		
	ASIAN JASMINE		

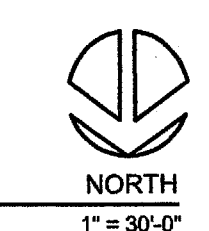
PLANT SCHEDULE-PLANT MATERIAL ADDED (ALL PLANT MATERIAL MUST BE CONTAINERIZED)

KEY	QUAN.	COMMON NAME	BOTANICAL NAME	SIZE	REMARKS
CE	17	CEDAR ELM	ULMUS CARASSIFOLIA	4.5" CAL.	PLANT WHERE INDICATED, (SEE PLANT REQUIREMENTS)
LO	02	LIVE OAK	QUEERCUS VIRGINIANA	4.5" CAL.	PLANT WHERE INDICATED, (SEE PLANT REQUIREMENTS)
WM	09	WAX MYRTLE	MYRTICA CERIFERA	8-10' HEIGHT	PLANT WHERE INDICATED, (SEE PLANT REQUIREMENTS)
WFH	10	WILL FLEMING HOLLY	ILEX VOMITORIA 'WILL FLEMING'	15 GAL.	PLANT WHERE INDICATED,
AJ	375	ASIAN JASMINE	TRACHELOSPERMUM ASIATICUM	4" POTS	PLANT 12" O.C. (SEE PLANT REQUIREMENTS)
GRASS	1547 SF	COMMON BERMAUDA	CYNODOON DACTYLON	90D	PLANT IN A "STAGGER" PATTERN

IRRIGATION:
 THE EXISTING UNDERGROUND IRRIGATION SYSTEM WILL BE ADJUSTED TO ACCOMMODATE THE REVISED LANDSCAPE. THIS SYSTEM WILL BE EQUIPPED WITH RAIN GAUGE AND FREEZE THAW SENSOR. 100% COVERAGE WILL BE PROVIDED.

PLANT REQUIREMENTS

- SECTION 8, C SIZE AND SPACING STANDARDS
1. CALIPER MEASURED 12" ABOVE FINISH GRADE
 2. MINIMUM BRANCHING HEIGHT FOR ALL SHADE TREES WILL BE 6' HT.
 3. MINIMUM SIZE IS 4 INCH CALIPER, 14-16' HT MIN.
 4. MAXIMUM HEIGHT IS SHALL NOT EXCEED 16' HT.
 5. TREES SHALL BE HEALTHY AND FREE OF PHYSICAL DAMAGE.
 6. THE TOWN OF ADDISON SHALL REJECT ANY TREES DELIVERED AND/OR NOT MEETING THE MINIMUM SIZE AND SHAPE STANDARDS.
 7. CRAPE MYRTLES SHALL BE 6-8' MIN. HT.
 8. EVERGREEN TREES SHALL BE 6-10' MIN. HT.



DRAWING INFO: 102308SGDEPA1

FILE:
 CURRENT ISSUE:
 DRAWN BY: RLA
 CHECKED BY: SR

SHEET NUMBER:

LANDSCAPE PLAN
L2.00