

UNITED STATES
ENVIRONMENTAL
PROTECTION
AGENCY

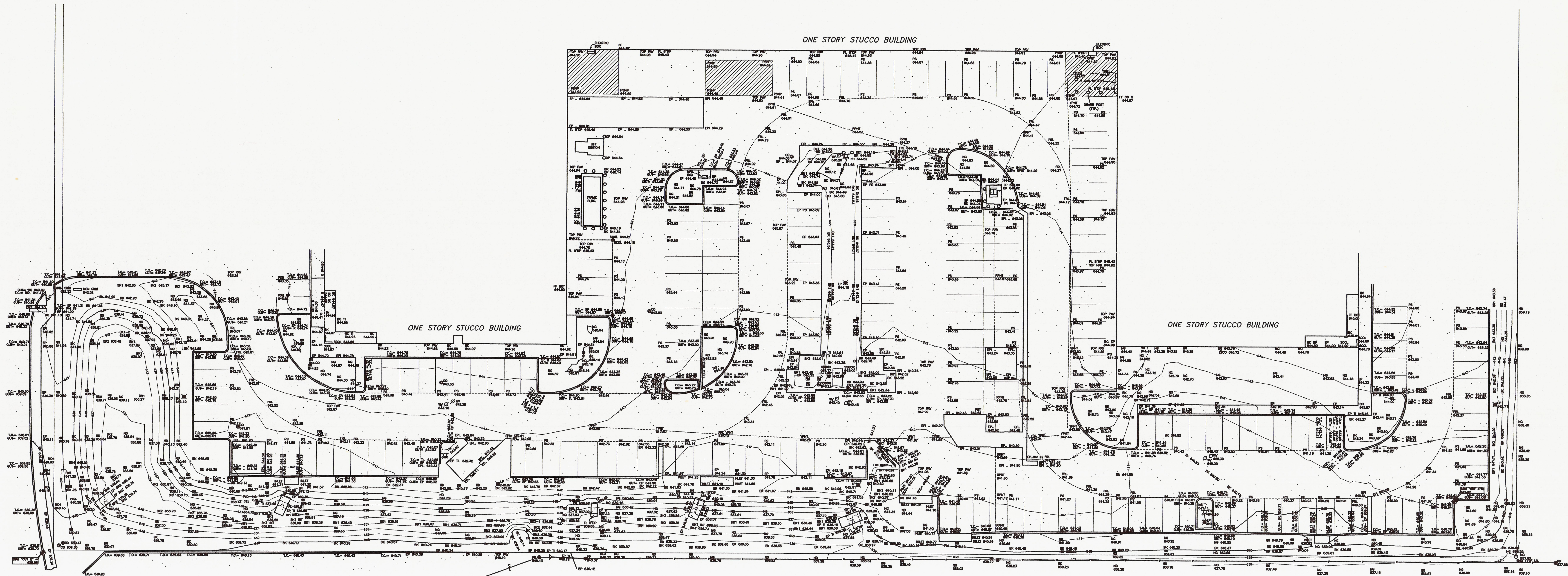
16650 WESTGROVE
DRIVE SUITES 200 &
300 ADDISON, TEXAS
75001

CITY PROJECT NUMBER
PW# 2008-20

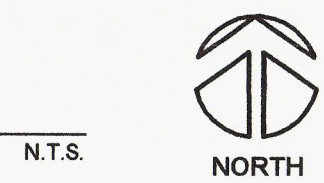
CONSULTANT:

704 Central Expressway, East
Ft. Worth, Texas 76104
Phone: (817) 483-1070
Fax: (817) 483-1080
email: phine@glsl-inc.com

Global Land Surveying, Inc.



01 PLAN



SHEET NUMBER:
TOPOGRAPHIC
SURVEY

T1.01

DESCRIPTION CODES:
 .. = AREA UNDER CONSTRUCTION
 BC = BUILDING CORNER
 BK = BREAK
 BOT = BOTTOM OF THRESHOLD
 CO = SANITARY CLEANOUT
 DP = DRAINAGE PIPE
 EP = EDGE OF PAVEMENT
 EPI = EDGE OF PAVEMENT INTERSECTION
 FF = FRESH FLOOR
 FL = FLOW LINE
 FR = FIRE LANE
 GP = GUARD POST
 PS = PARKING SPACE
 PSNP = PARKING SPACE/NO PARKING
 RPT = RED PAINT/ELECTRIC
 WM = WATER METER
 WY = WATER VALVE
 SSM = SITE BENCH MARK
 SCOL = STUCCO COLUMN
 YPNT = YELLOW PAINT/GAS

NOTES:

1. THIS PLAN HAS BEEN PREPARED FOR THE EXCLUSIVE USE OF SODESIGN, INC.
2. SERVICE DETAILS SHOULD BE CONFIRMED WITH THE RELEVANT SERVICE AUTHORITY DURING DESIGN & PRIOR TO ANY CONSTRUCTION.
3. GROUND SURFACE IS UNEVEN AND UNULATING AND THE CONTOURS ARE INDICATIVE ONLY.
4. CONTOUR INTERVAL: MAJOR 5.0 MINOR 1.0
5. AT THE REQUEST OF THE CLIENT, NO TREES HAVE BEEN SURVEYED.
6. AT THE REQUEST OF THE CLIENT, NO BOUNDARIES HAVE BEEN SURVEYED. THIS SURVEY WAS PERFORMED WITHOUT THE BENEFIT OF AN ABSTRACTOR, THEREFORE, NO SEARCH OF RECORD EASEMENTS WAS PERFORMED ON THE SUBJECT PROPERTY.
7. BENCH MARK NOTE:
 -ALL ELEVATIONS ARE RELATIVE TO TOWN OF ADDISON MONUMENT #13.
 -LOCATION OF MONUMENT IS 630' WEST FROM THE INTERSECTION OF ADDISON RD. AND WESTGROVE DR. THEN 15.7' SOUTH FROM BACK OF CURB, 5' FROM STREET SIGN AND 8' SOUTH TO BACK OF CURB OF WESTGROVE RD.
 -ELEVATION= 642.09
 -MONUMENT: 2" BRASS DISK STAMPED "TDDOT COA-13 GPS"

MATCH LINE

UNITED STATES ENVIRONMENTAL PROTECTION AGENCY

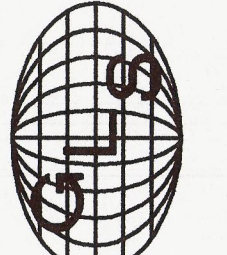
18650 WESTGROVE DRIVE SUITES 200 & 300 ADDISON, TEXAS 75001

CITY PROJECT NUMBER PWW 2008-20

CONSULTANT:

704 Central Parkway East
 Suite 1214
 Dallas, TX 75204
 Phone: (972) 881-1700
 Fax: (972) 488-1068
 email: plaine@gl-nc.com

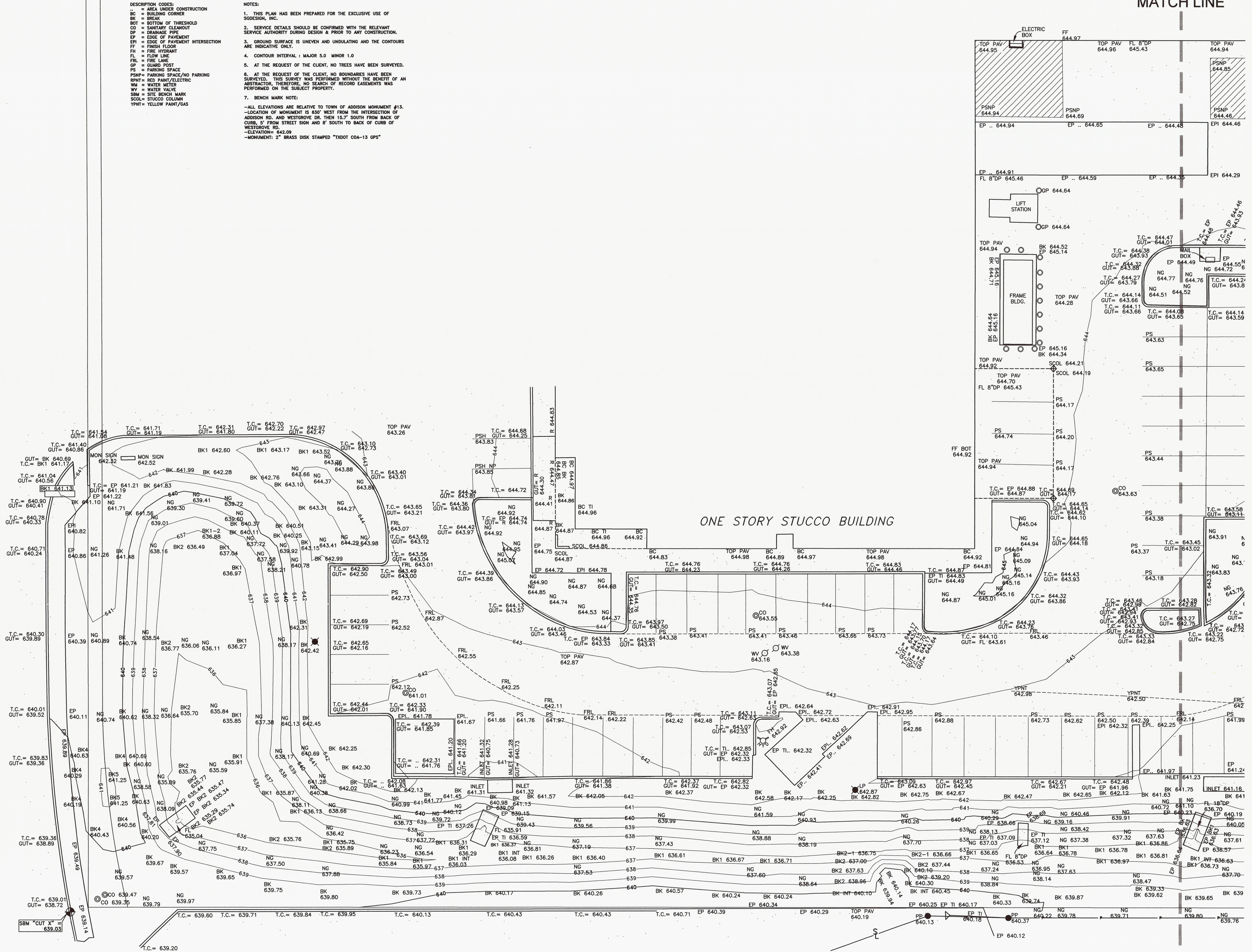
Global Land Surveying, Inc.



SHEET NUMBER:

TOPOGRAPHIC SURVEY

T1.02



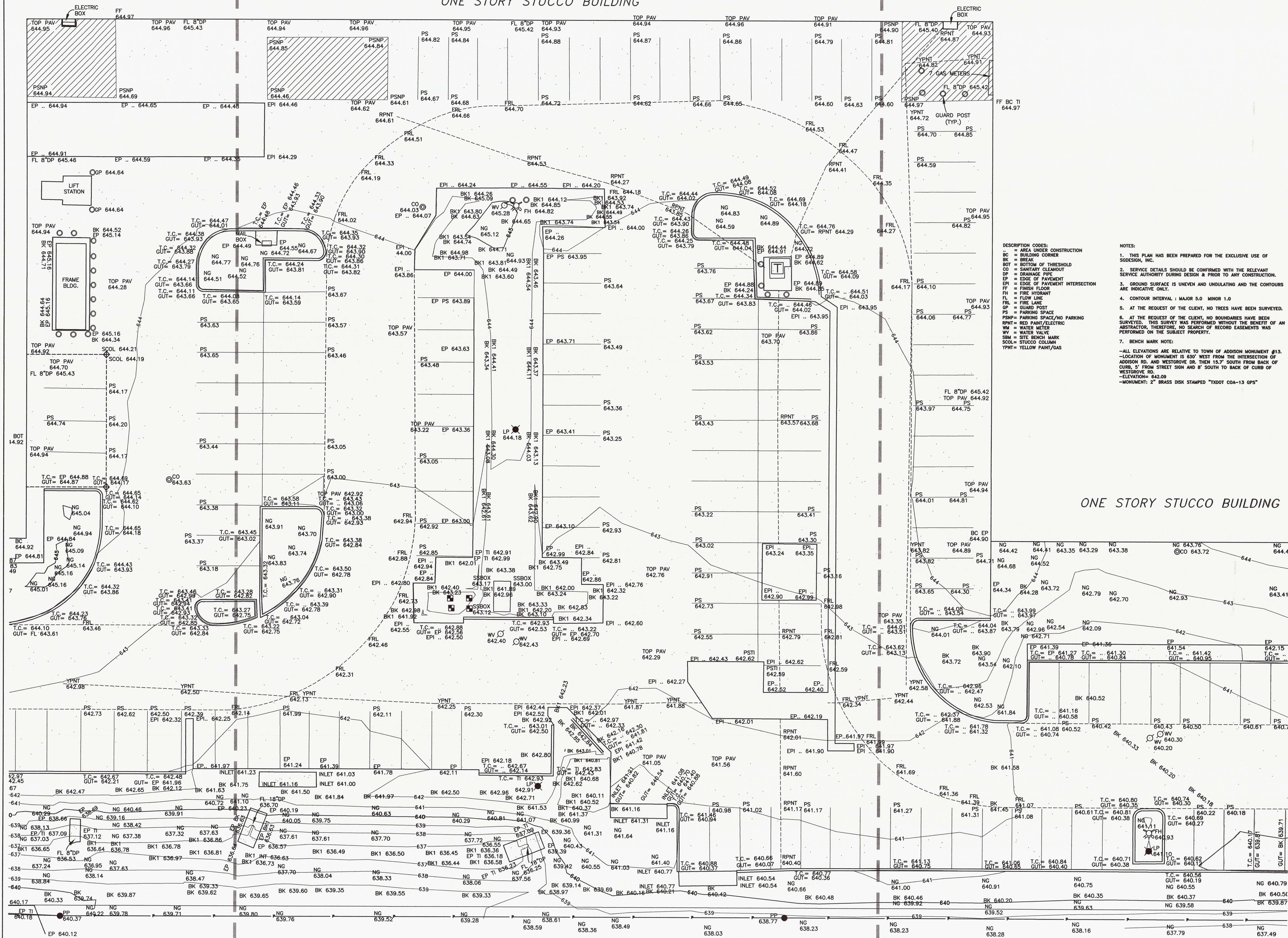
MATCH LINE



MATCH LINE

MATCH LINE

ONE STORY STUCCO BUILDING



DESCRIPTION CODES:

- .. = AREA UNDER CONSTRUCTION
- BC = BUILDING CORNER
- BK = BREAK
- BOT = BOTTOM OF THRESHOLD
- CO = SANITARY CLEANOUT
- DP = DRAINAGE PIPE
- EP = EDGE OF PAVEMENT
- EPI = EDGE OF PAVEMENT INTERSECTION
- FF = FINISH FLOOR
- FI = FIRE HYDRANT
- FL = FLOW LINE
- FR = FIRE LINE
- GP = GUARD POST
- NSP = PARKING SPACE/NO PARKING
- PS = PARKING SPACE
- PSNP = PARKING SPACE/NO PARKING
- RPNT = RED PAINT/ELECTRIC
- WM = WATER METER
- WV = WATER VALVE
- SBM = SITE BENCHMARK
- SCOL = STUCCO COLUMN
- YPNT = YELLOW PAINT/GAS

NOTES:

1. THIS PLAN HAS BEEN PREPARED FOR THE EXCLUSIVE USE OF SODDISON, INC.
2. SERVICE DETAILS SHOULD BE CONFIRMED WITH THE RELEVANT SERVICE AUTHORITY DURING DESIGN & PRIOR TO ANY CONSTRUCTION.
3. GROUND SURFACE IS UNEVEN AND UNUNDULATING AND THE CONTOURS ARE INDICATIVE ONLY.
4. CONTOUR INTERVAL: MAJOR 5.0 MINOR 1.0
5. AT THE REQUEST OF THE CLIENT, NO TREES HAVE BEEN SURVEYED.
6. AT THE REQUEST OF THE CLIENT, NO BOUNDARIES HAVE BEEN SURVEYED. THIS SURVEY WAS PERFORMED WITHOUT THE BENEFIT OF AN ABSTRACTOR. THEREFORE, NO SEARCH OF RECORD EASEMENTS WAS PERFORMED ON THE SUBJECT PROPERTY.
7. BENCHMARK NOTE:
--ALL ELEVATIONS ARE RELATIVE TO TOWN OF ADDISON MONUMENT #13.
--LOCATION OF MONUMENT IS 630' WEST FROM THE INTERSECTION OF ADDISON RD. AND WESTGROVE DR. THEN 15.7' SOUTH FROM BACK OF CURB, 5' FROM STREET SIGN AND 8' SOUTH TO BACK OF CURB OF WESTGROVE RD.
--ELEVATION = 642.09
--MONUMENT: 2" BRASS DISK STAMPED "TWOOT COA-13 GPS"

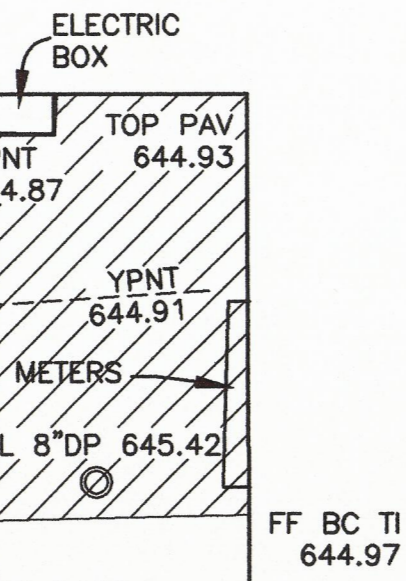
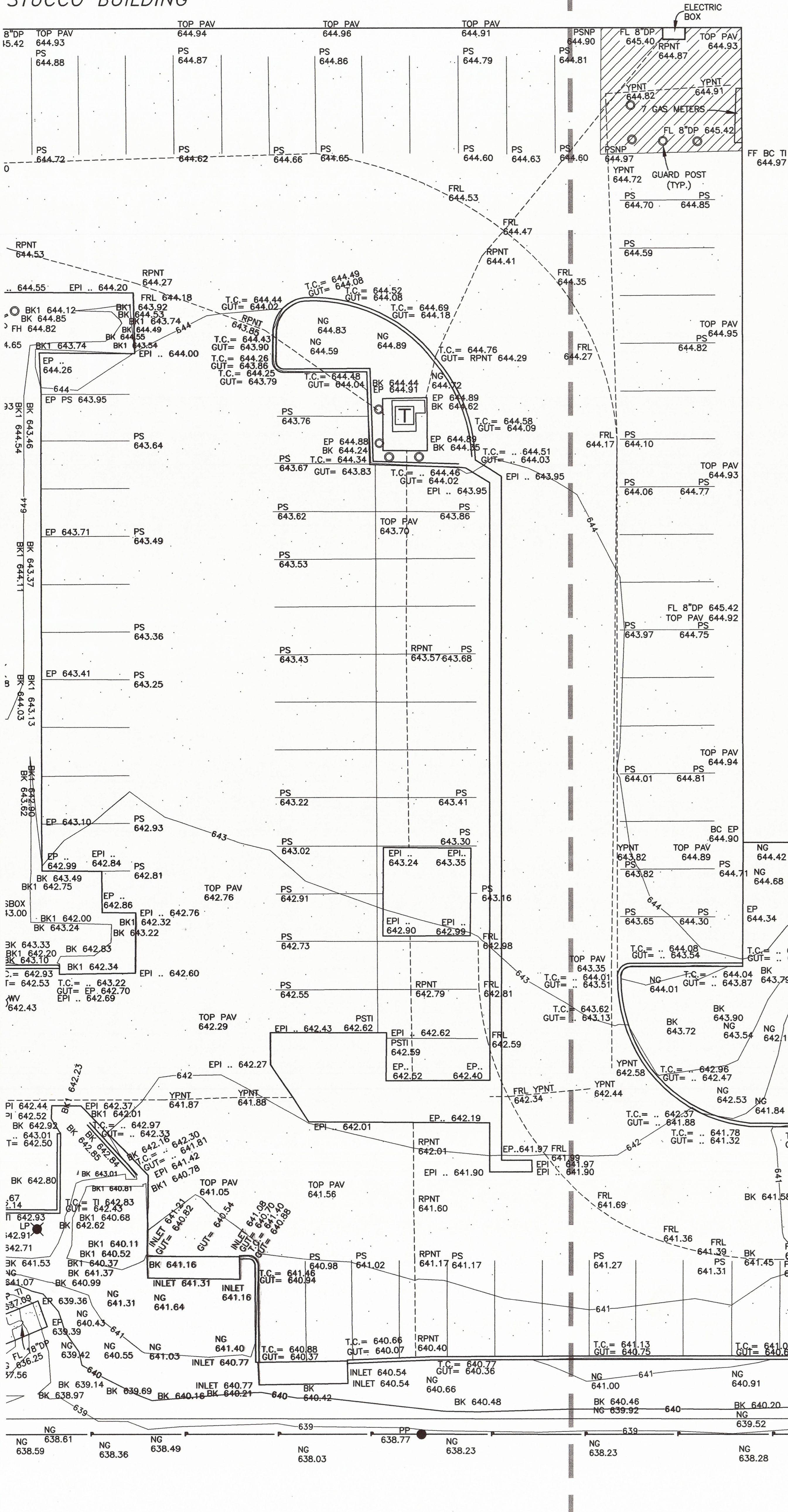
MATCH LINE

MATCH LINE



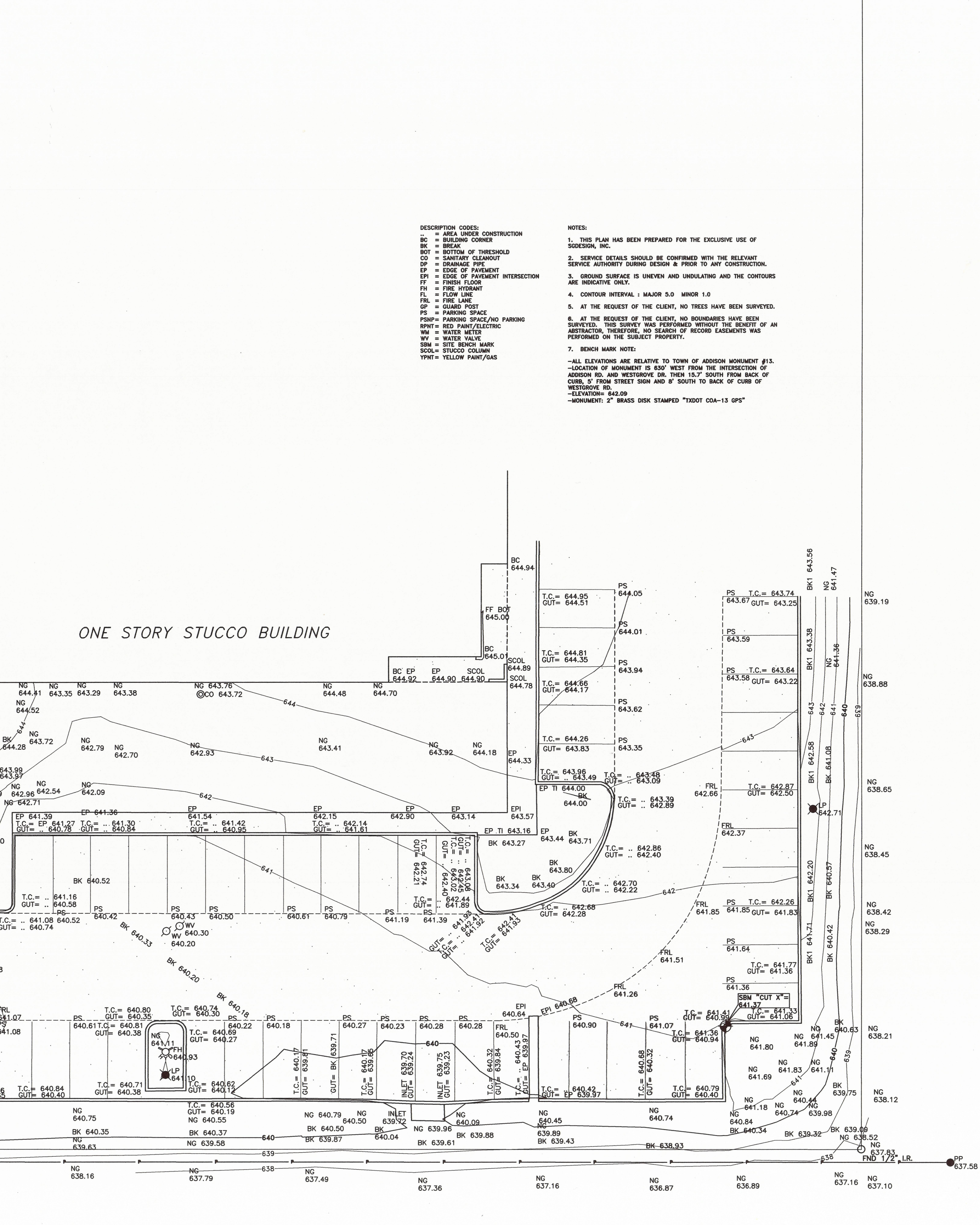
STUCCO BUILDING

MATCH LINE



ONE STORY STUCCO BUILDING

MATCH LINE



DESCRIPTION CODES:

- .. = AREA UNDER CONSTRUCTION
- BC = BUILDING CORNER
- BO = BREAK
- BT = BOTTOM OF THRESHOLD
- CD = SANITARY CLEANOUT
- DP = DRAINAGE PIPE
- EP = EDGE OF PAVEMENT
- EPI = EDGE OF PAVEMENT INTERSECTION
- FF = FINISH FLOOR
- FH = FIRE HYDRANT
- FL = FLOW LINE
- FRL = FIRE LANE
- GP = GUARD POST
- PS = PARKING SPACE
- PSNP = PARKING SPACE/NO PARKING
- RPNT = RED PAINT/ELECTRIC
- WM = WATER METER
- WV = WATER VALVE
- SBM = SITE BENCH MARK
- SCOL = STUCCO COLUMN
- YPNT = YELLOW PAINT/GAS

NOTES:

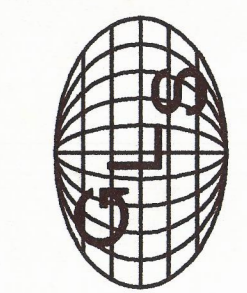
1. THIS PLAN HAS BEEN PREPARED FOR THE EXCLUSIVE USE OF SODESIGN, INC.
2. SERVICE DETAILS SHOULD BE CONFIRMED WITH THE RELEVANT SERVICE AUTHORITY DURING DESIGN & PRIOR TO ANY CONSTRUCTION.
3. GROUND SURFACE IS UNEVEN AND UNUNDULATING AND THE CONTOURS ARE INDICATIVE ONLY.
4. CONTOUR INTERVAL: MAJOR 5.0 MINOR 1.0
5. AT THE REQUEST OF THE CLIENT, NO TREES HAVE BEEN SURVEYED.
6. AT THE REQUEST OF THE CLIENT, NO BOUNDARIES HAVE BEEN SURVEYED. THIS SURVEY WAS PERFORMED WITHOUT THE BENEFIT OF AN ABSTRACTOR, THEREFORE, NO SEARCH OF RECORD EASEMENTS WAS PERFORMED ON THE SUBJECT PROPERTY.
7. BENCH MARK NOTE:
 -ALL ELEVATIONS ARE RELATIVE TO TOWN OF ADDISON MONUMENT #13.
 -LOCATION OF MONUMENT IS 850' WEST FROM THE INTERSECTION OF ADDISON RD. AND WESTGROVE DR. THEN 15.7' SOUTH FROM BACK OF CURB, 5' FROM STREET SIGN AND 8' SOUTH TO BACK OF CURB OF WESTGROVE RD.
 -ELEVATION= 642.09
 -MONUMENT: 2" BRASS DISK STAMPED "TXDOT COA-13 GPS"

UNITED STATES ENVIRONMENTAL PROTECTION AGENCY
 16650 WESTGROVE DRIVE SUITES 200 & 300 ADDISON, TEXAS 75001
 CITY PROJECT NUMBER PW# 2008-20

CONSULTANT:

704 Central Parkway East
 Suite 1214
 Plano, TX 75075
 Phone: (972) 881-1700
 Fax: (972) 428-1063
 email: phine@gl-inc.com

Global Land Surveying, Inc.



SHEET NUMBER:

TOPOGRAPHIC SURVEY

T1.04

01 TOPOGRAPHIC SURVEY

1"=100'

