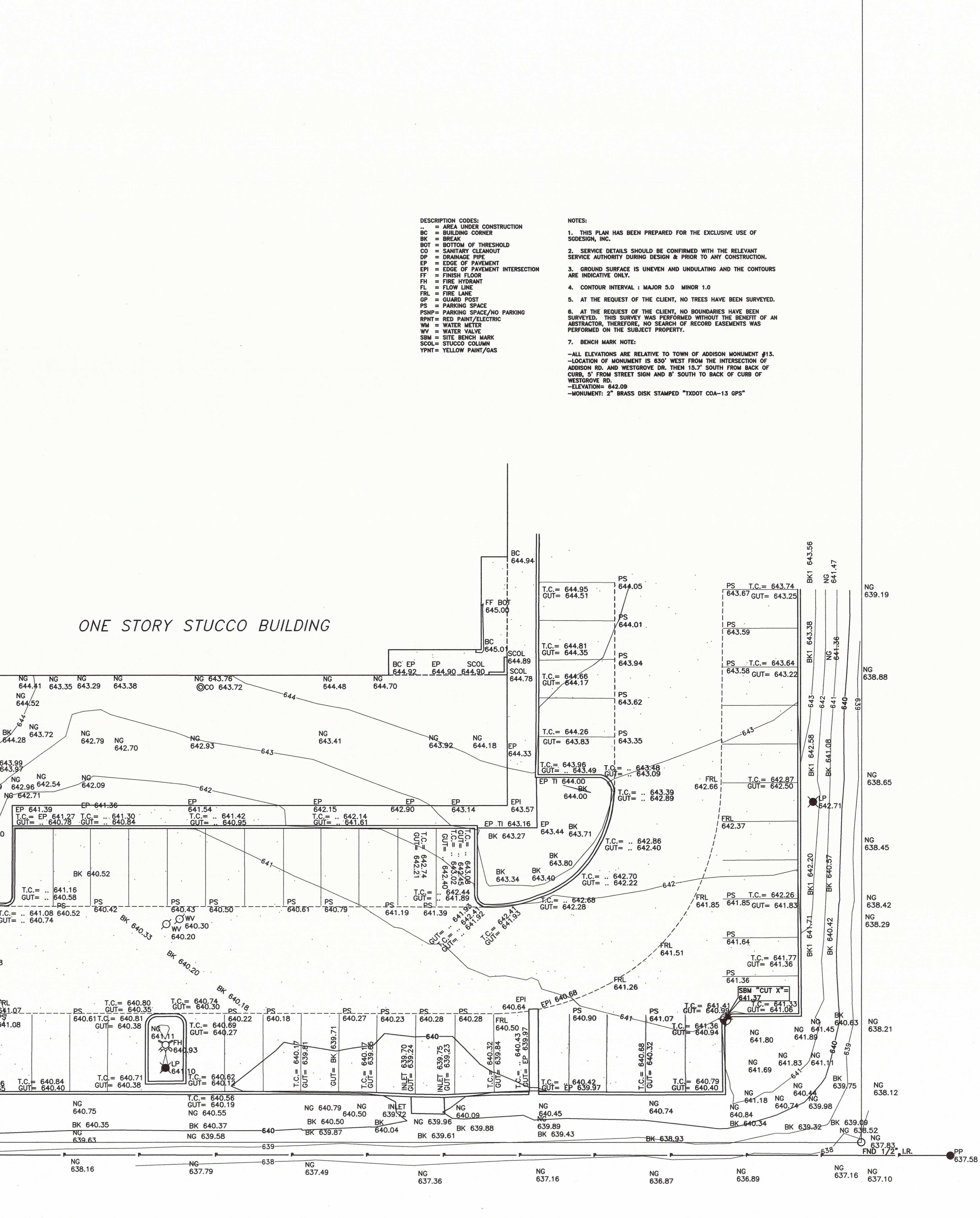
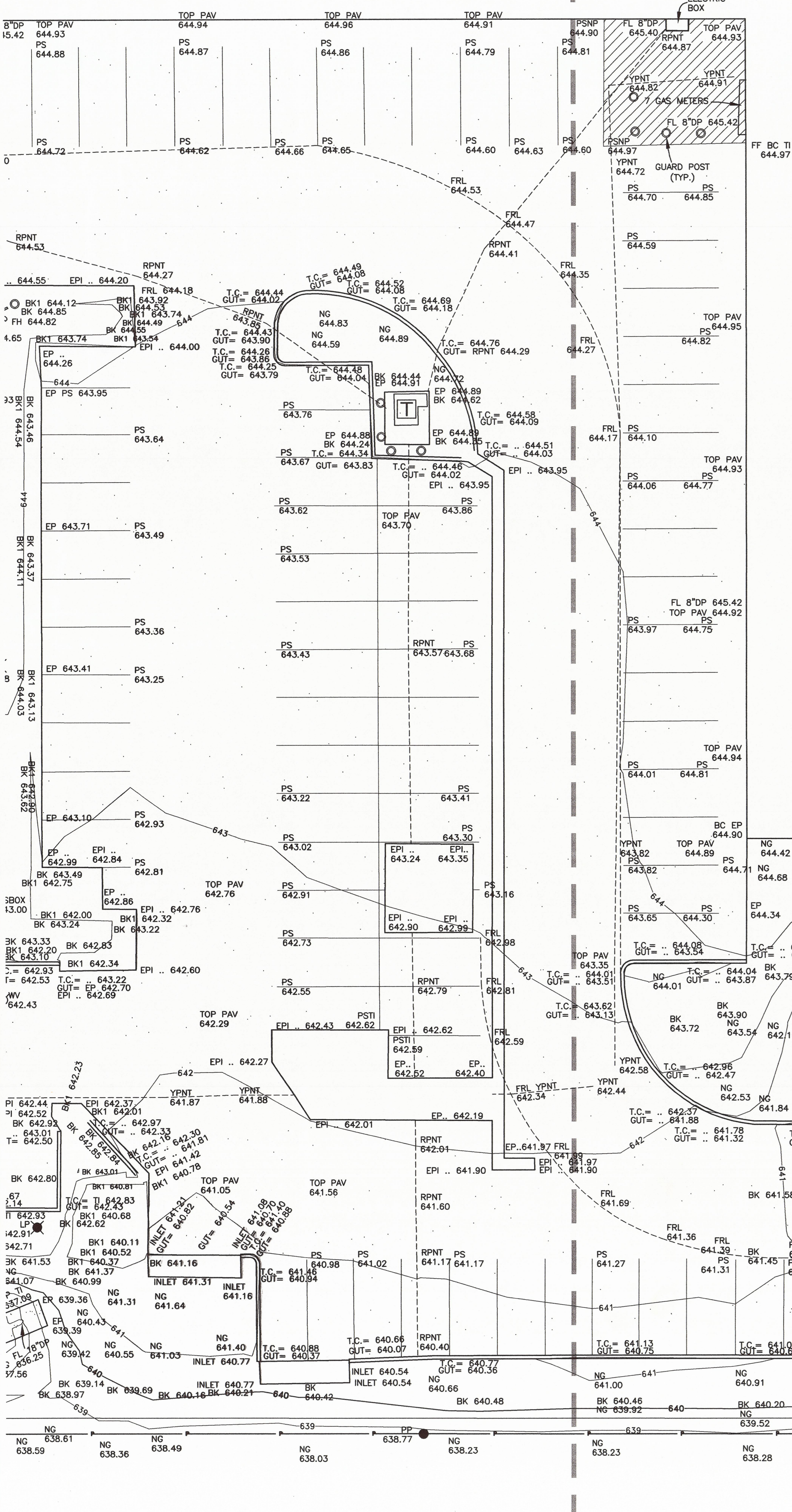


STUCCO BUILDING

MATCH LINE



DESCRIPTION CODES:
 - = AREA UNDER CONSTRUCTION
 BC = BUILDING CORNER
 BK = BREAK
 BOT = BOTTOM OF THRESHOLD
 CD = SANITARY CLEANOUT
 DP = DRAINAGE PIPE
 EP = EDGE OF PAVEMENT
 EPI = EDGE OF PAVEMENT INTERSECTION
 FF = FINISH FLOOR
 FH = FIRE HYDRANT
 FL = FLOW LINE
 FRL = FIRE LANE
 GP = GUARD POST
 PS = PARKING SPACE
 PSNP = PARKING SPACE/NO PARKING
 RPNT = RED PAINT/ELECTRIC
 WM = WATER METER
 WV = WATER VALVE
 SBM = SITE BENCH MARK
 SCOL = STUCCO COLUMN
 YPNT = YELLOW PAINT/GAS

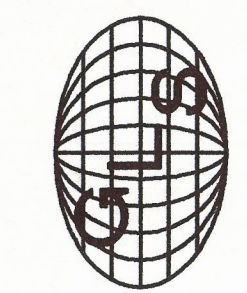
NOTES:
 1. THIS PLAN HAS BEEN PREPARED FOR THE EXCLUSIVE USE OF SODESIGN, INC.
 2. SERVICE DETAILS SHOULD BE CONFIRMED WITH THE RELEVANT SERVICE AUTHORITY DURING DESIGN & PRIOR TO ANY CONSTRUCTION.
 3. GROUND SURFACE IS UNEVEN AND UNUNDULATING AND THE CONTOURS ARE INDICATIVE ONLY.
 4. CONTOUR INTERVAL: MAJOR 5.0 MINOR 1.0
 5. AT THE REQUEST OF THE CLIENT, NO TREES HAVE BEEN SURVEYED.
 6. AT THE REQUEST OF THE CLIENT, NO BOUNDARIES HAVE BEEN SURVEYED. THIS SURVEY WAS PERFORMED WITHOUT THE BENEFIT OF AN ABSTRACTOR, THEREFORE, NO SEARCH OF RECORD EASEMENTS WAS PERFORMED ON THE SUBJECT PROPERTY.
 7. BENCH MARK NOTE:
 -ALL ELEVATIONS ARE RELATIVE TO TOWN OF ADDISON MONUMENT #13.
 -LOCATION OF MONUMENT IS 850' WEST FROM THE INTERSECTION OF ADDISON RD. AND WESTGROVE DR. THEN 15.7' SOUTH FROM BACK OF CURB, 5' FROM STREET SIGN AND 8' SOUTH TO BACK OF CURB OF WESTGROVE RD.
 -ELEVATION= 642.09
 -MONUMENT: 2" BRASS DISK STAMPED "TXDOT COA-13 GPS"

UNITED STATES ENVIRONMENTAL PROTECTION AGENCY
 16650 WESTGROVE DRIVE SUITES 200 & 300 ADDISON, TEXAS 75001
 CITY PROJECT NUMBER PW# 2008-20

CONSULTANT:

704 Central Parkway East
 Suite 1214
 Plano, TX 75075
 Phone: (972) 881-1700
 Fax: (972) 428-1063
 email: phine@gl-inc.com

Global Land Surveying, Inc.



SHEET NUMBER:

TOPOGRAPHIC SURVEY

T1.04

01 TOPOGRAPHIC SURVEY

1"=100'

