

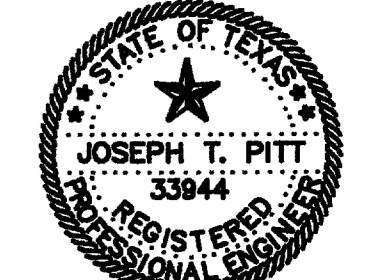
ARCHITECT



3311 Elm Street, Suite 105  
 Dallas, Texas 75226  
 214-742-6044  
 214-742-6041 Fax

ARCHITECT'S SEAL:

CONSULTANT:



**TMBP**  
 CONSULTING ENGINEERS INC.  
 200 W. AVARD ST. SUITE 400 DALLAS, TEXAS 75201  
 (214) 871-0300 (214) 871-8774 FAX  
 THE SEAL APPEARING ON THIS DOCUMENT WAS AUTHORIZED BY JOSEPH T. PITT, P.E. 33644 ON JANUARY 6, 2008

ISSUE HISTORY:

CITY REVIEW	01/07/09

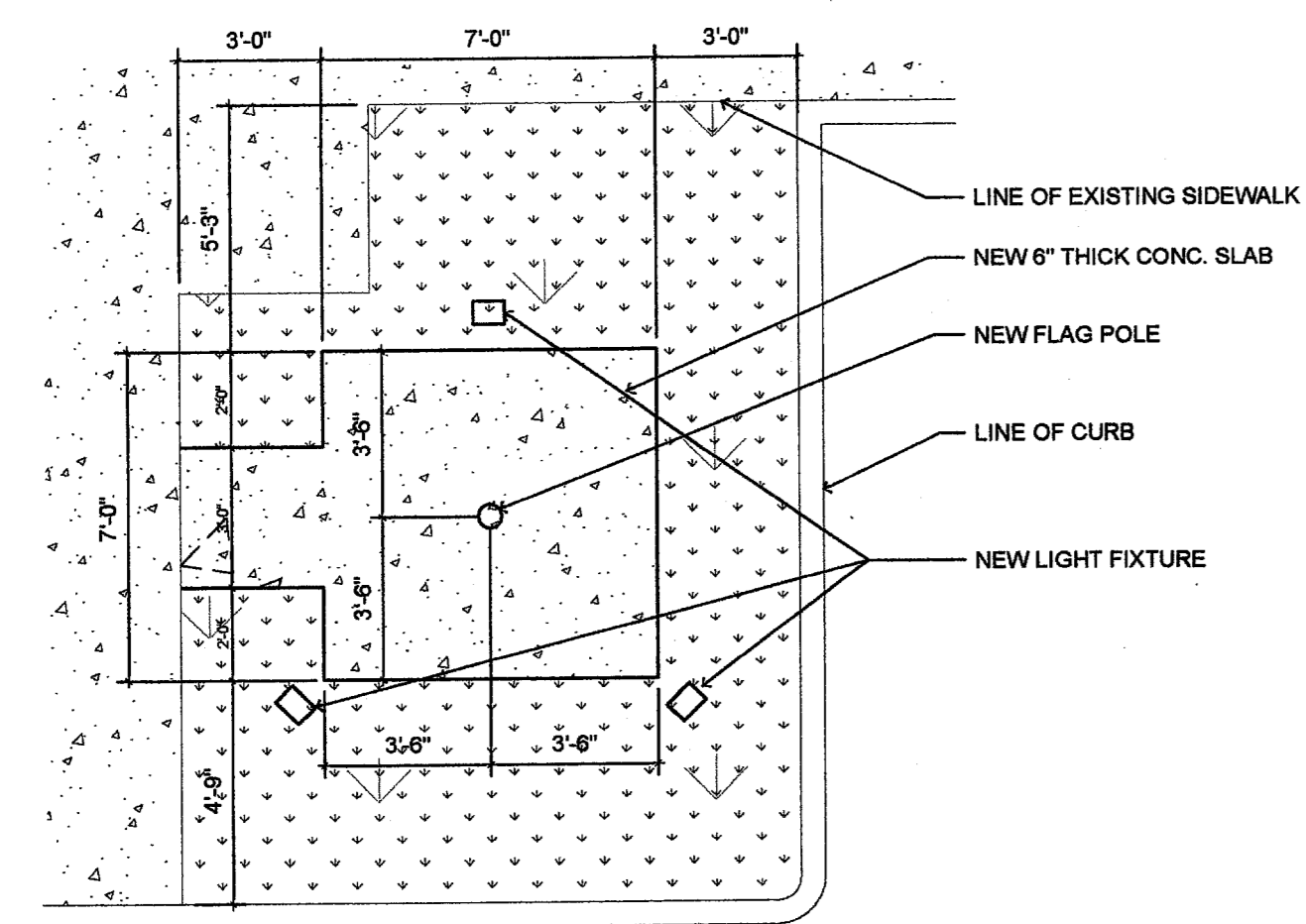
DRAWING INFO:

FILE:  
 CURRENT ISSUE:  
 DRAWN BY:  
 CHECKED BY: JTP

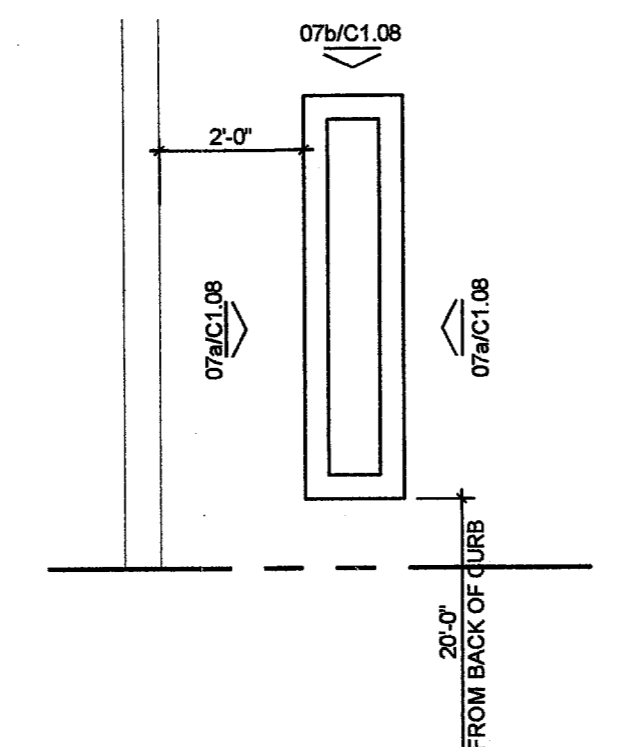
SHEET NUMBER:

**SITE DETAILS**

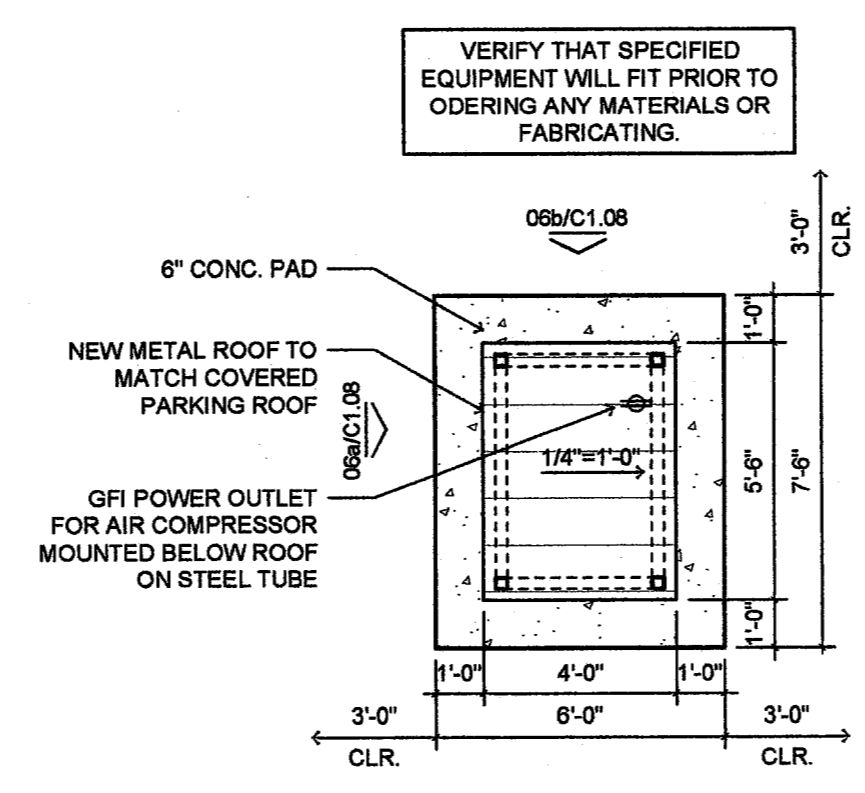
**C1.08**



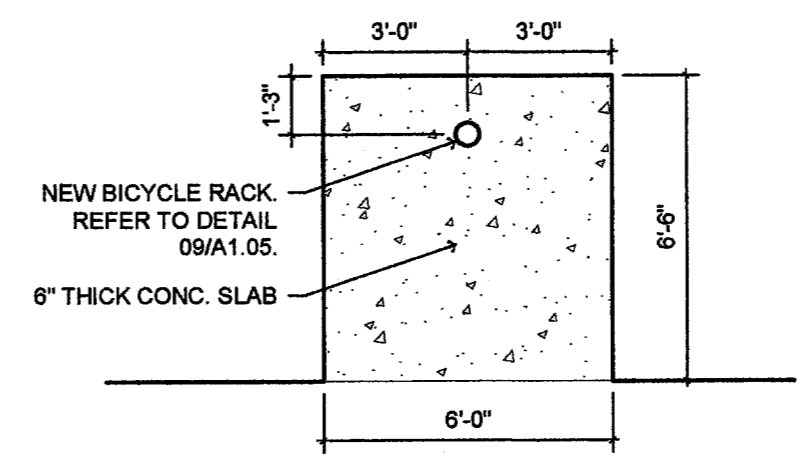
01 PLAN @ FLAG POLE 1/4"=1'-0"



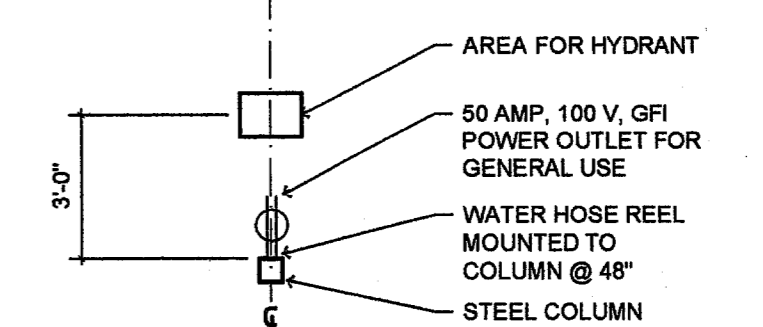
02 PLAN @ SIGN 3/8"=1'-0"



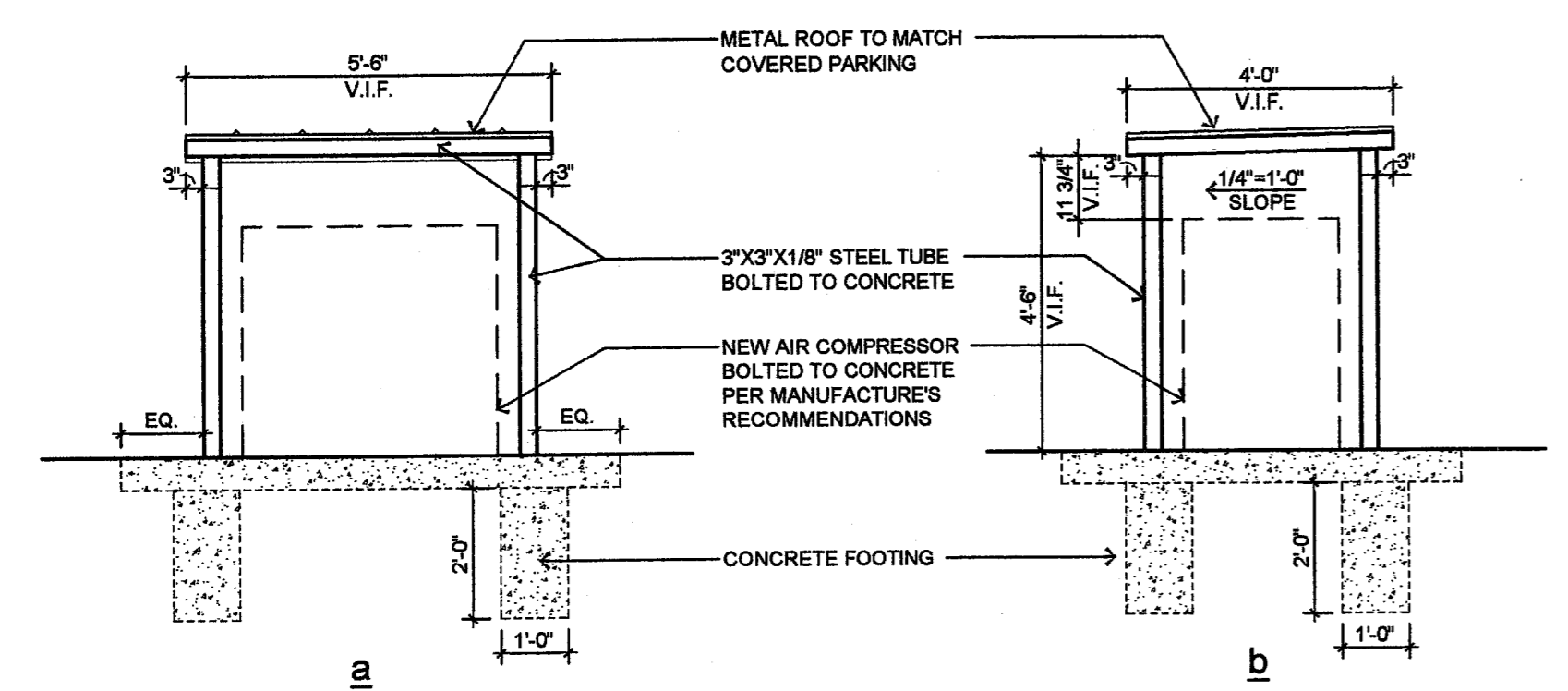
03 PLAN @ AIR COMPRESSOR 1/4"=1'-0"



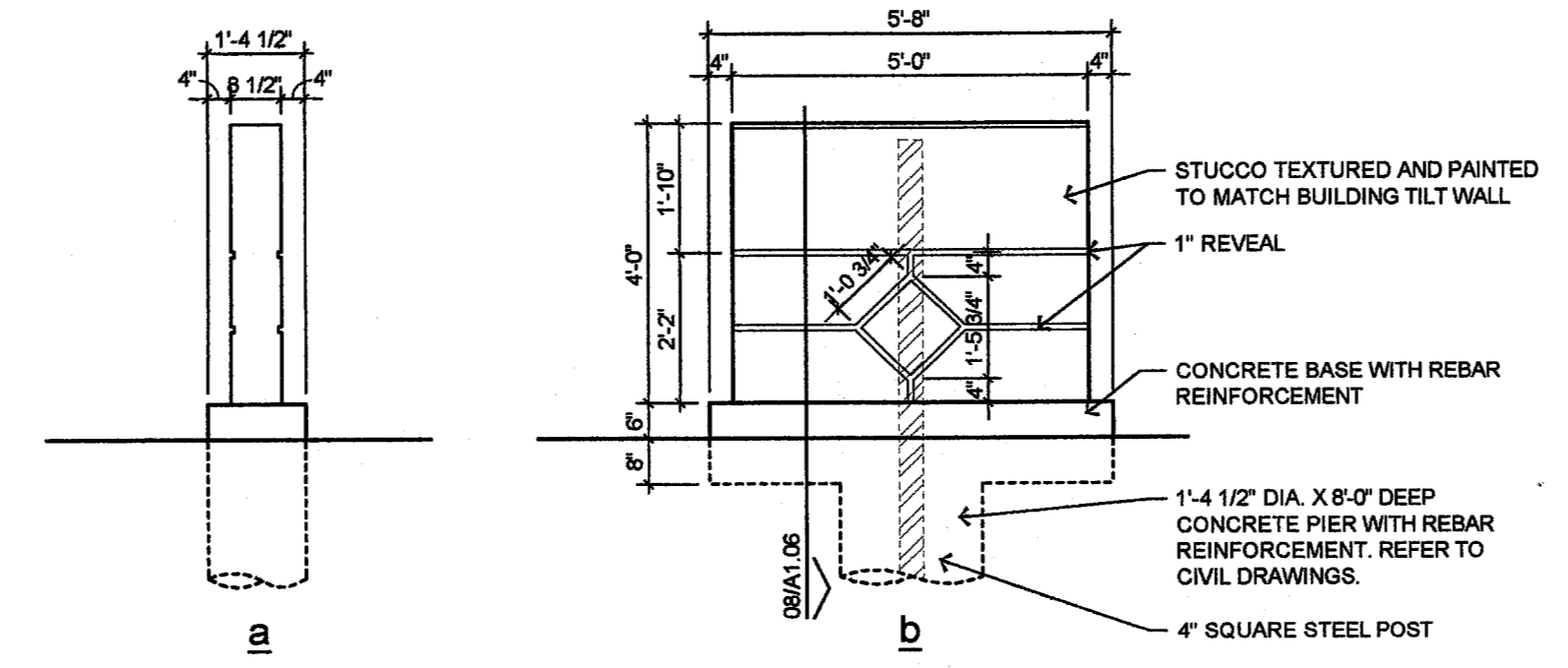
04 PLAN @ BICYCLE POST 1/4"=1'-0"



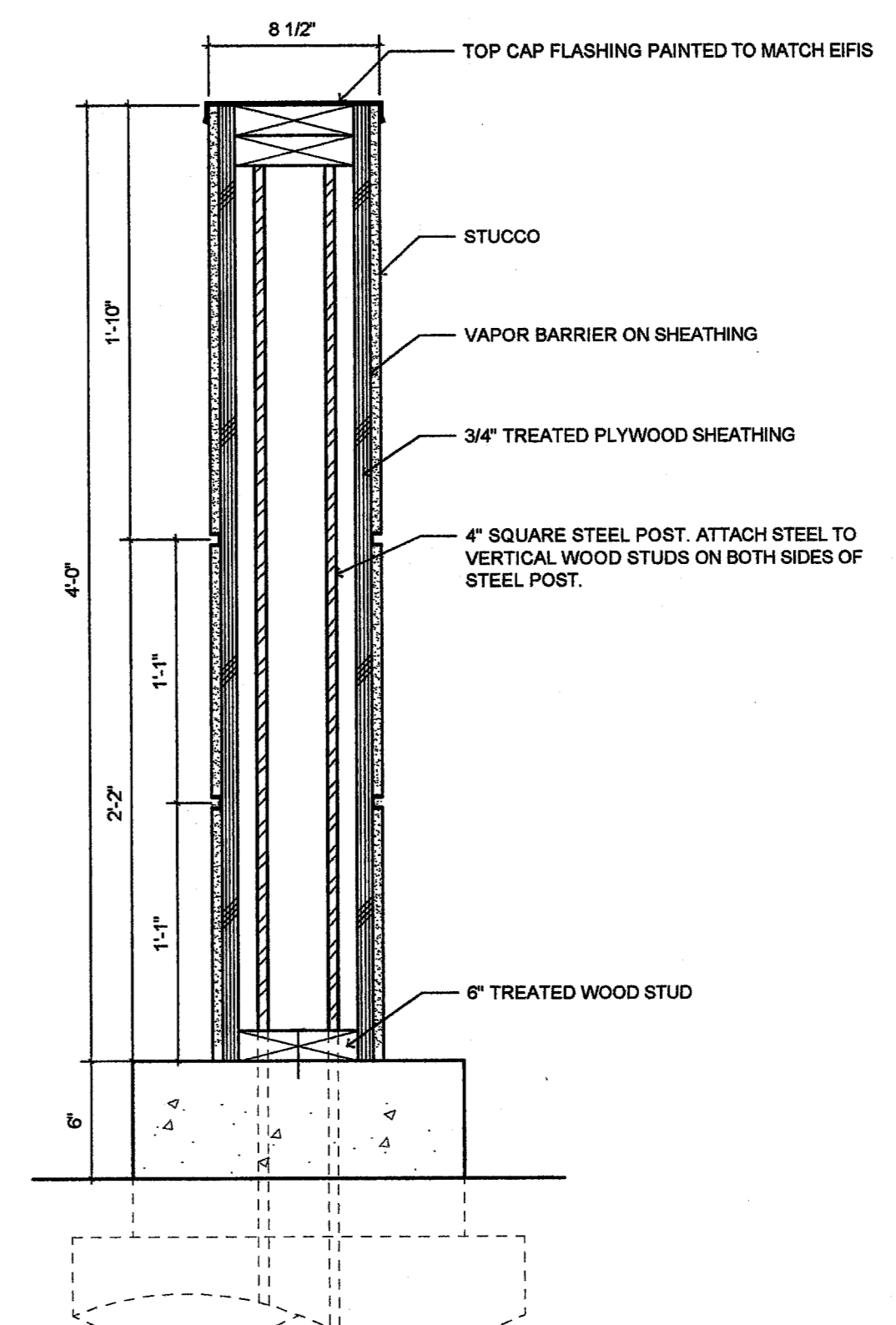
05 PLAN @ WATER HYDRANT 1/4"=1'-0"



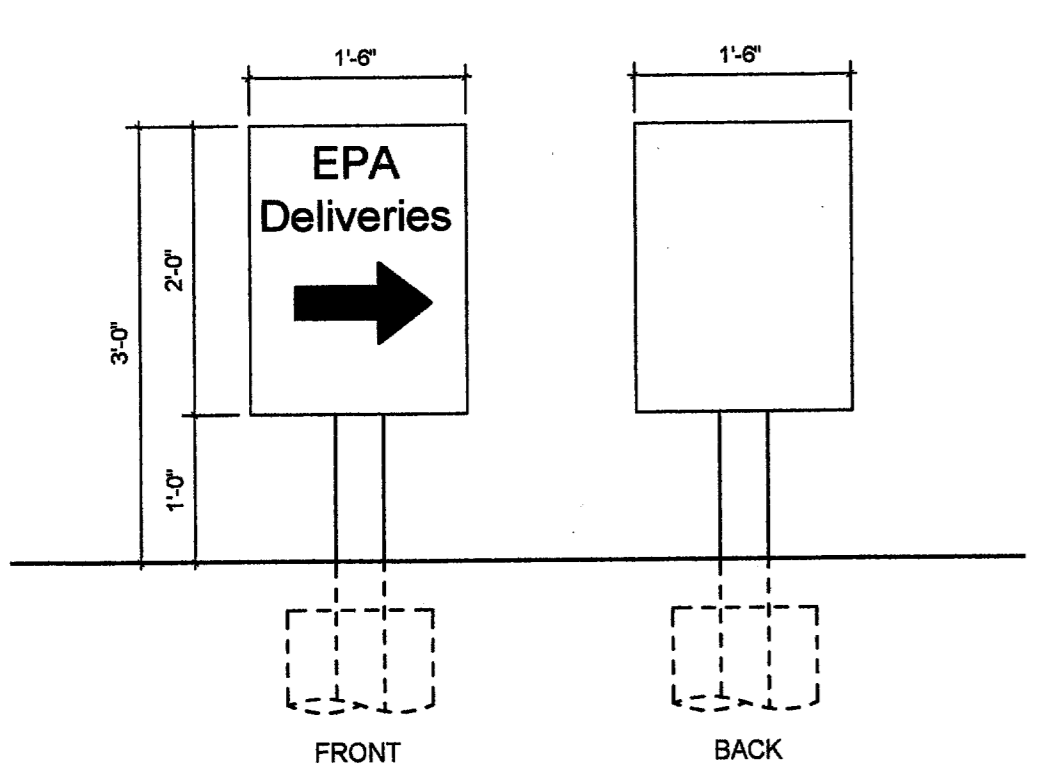
06 ELEVATION @ COMPRESSOR 3/8"=1'-0"



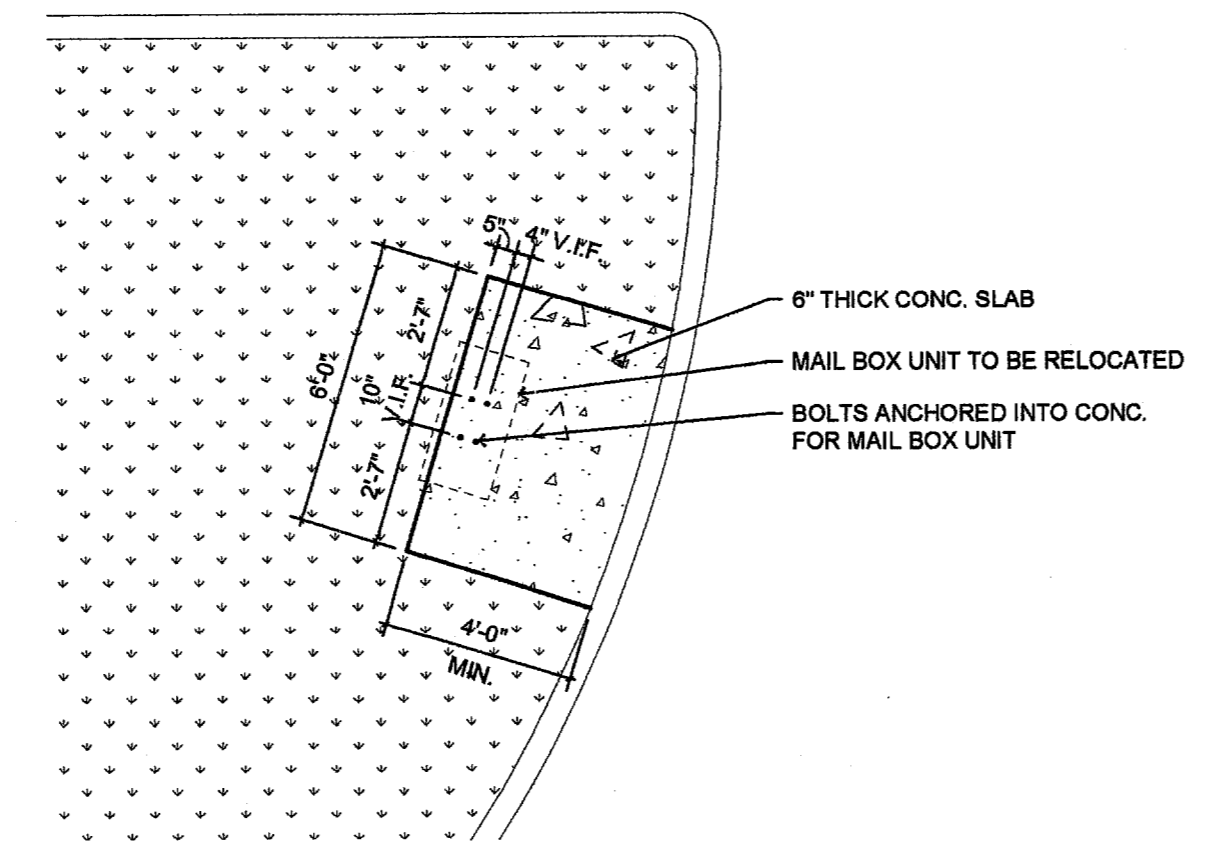
07 MONUMENT SIGN 3/8"=1'-0"



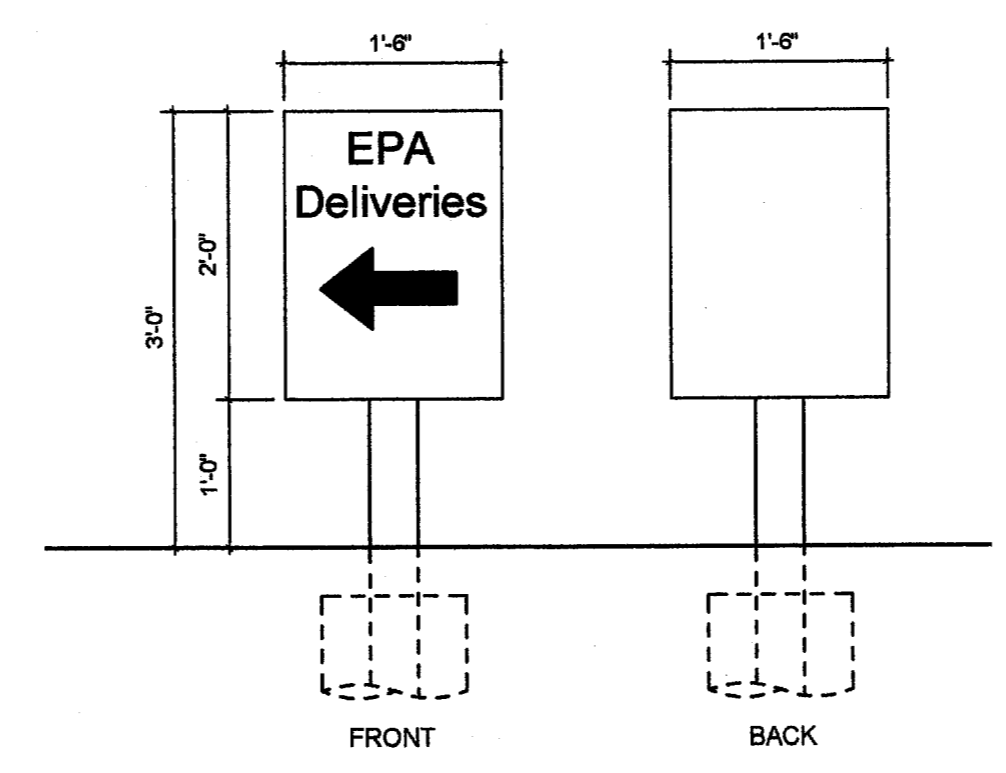
08 MONUMENT DETAIL 1-1/2"=1'-0"



09 DIRECTIONAL SIGN 3/4"=1'-0"



10 PLAN @ MAIL BOX PAD 1/4"=1'-0"



11 DIRECTIONAL SIGN 3/4"=1'-0"