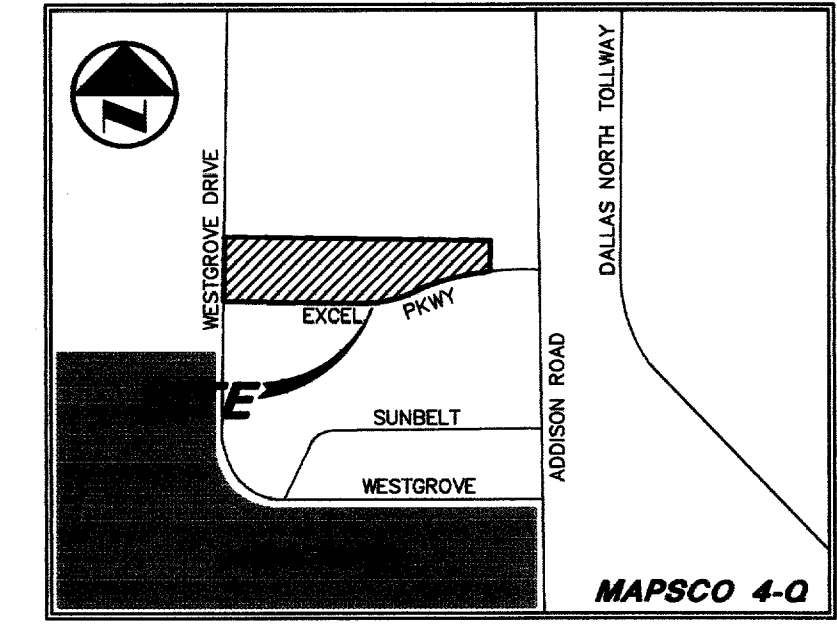


MATCH LINE SEE SHEET

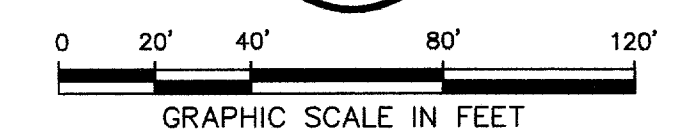
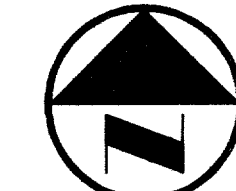
GARDEN BENT TREE COURT L.P.  
VOL. 92234, PG. 1517

LEGEND

- B BOLLARD
- EM ELECTRIC METER
- PP POWER POLE
- LS LIGHT STANDARD
- WM WATER METER
- WV WATER VALVE
- ICV IRRIGATION CONTROL VALVE
- FH FIRE HYDRANT
- CL CLEANOUT
- MH MANHOLE
- GM GAS METER
- TSF TRAFFIC SIGNAL CONTROL
- TSR TRAFFIC SIGNAL POLE
- TELE TELEPHONE BOX
- TV TV BOX
- FP FLAG POLE
- EM ELECTRIC METER
- TSF TRAFFIC SIGN
- PROPERTY LINE
- O.H. POWER LINE
- U/G TELEPHONE LINE
- U/G WATER LINE
- U/G GAS LINE
- FENCE
- B.F.R. BARRIER FREE RAMP



VICINITY MAP



ROF  
DW  
ARCHITECTS

DALLAS  
JANIS  
HARLINGEN  
Suite 401  
703 McKinney Avenue, Suite 401  
Dallas, TX 75202-0052  
214-954-0855  
Fax: 214-954-0855  
www.rofdw.com

RIKE  
OGDEN  
FIGUEROA  
DICKSON  
WELLS  
PLLC

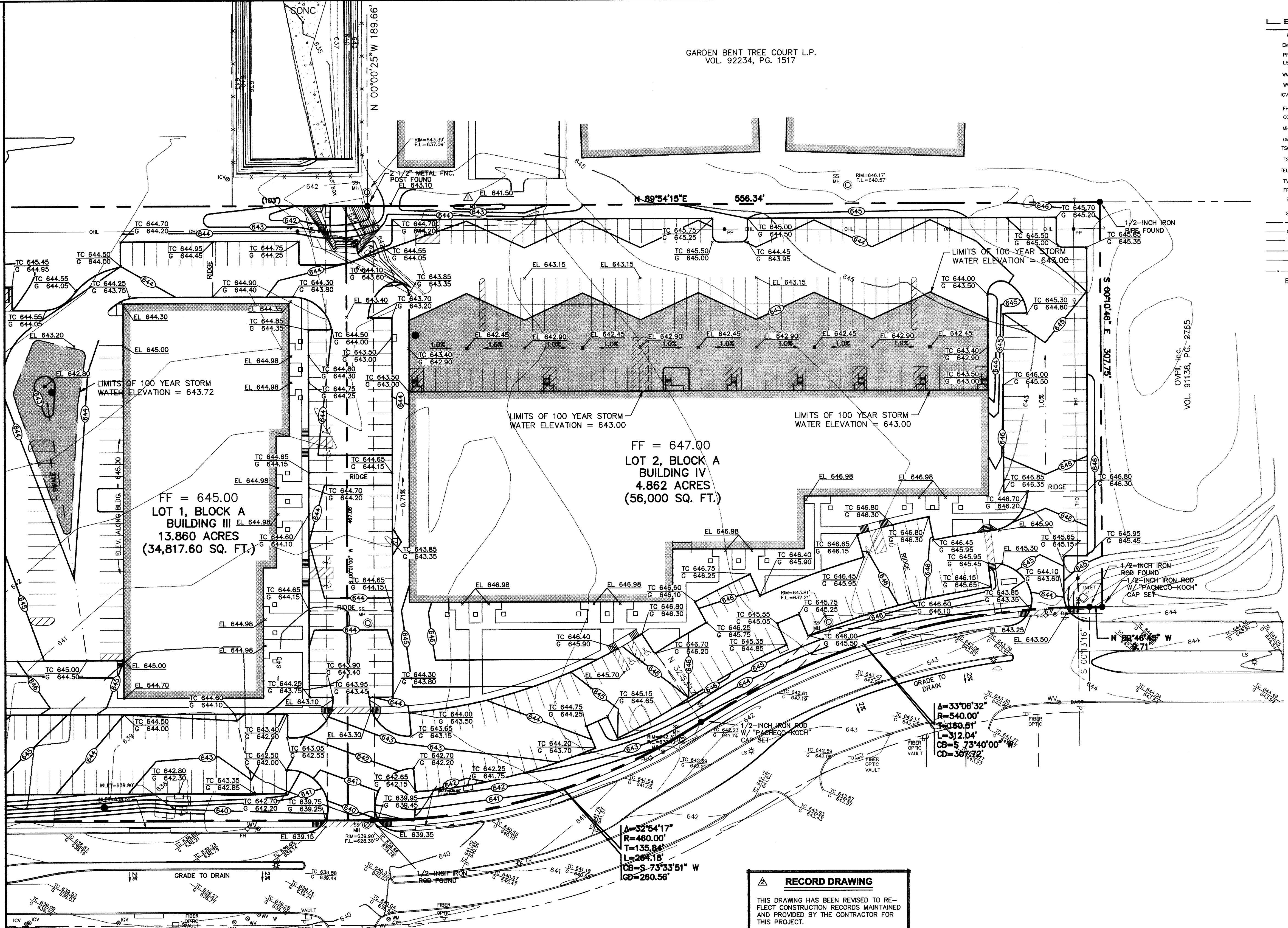
ADDITION TECH CENTER  
OFFICE / FLEX / WAREHOUSE PROJECT  
ADDITION, TEXAS  
P DEVELOPMENT SERVICES, INC.

PROJECT NO.: 2112-05.DWG  
PREPARED BY: JLM  
CHECKED BY: CJW  
DATE: 7/26/00  
REVISIONS:

SHEET NO. + TITLE:  
C3.2

GRADING  
PLAN

DWG FILE: 2112-05.DWG  
XREF FILE: 2112-06.DWG  
XREF FILE: 2112-04.DWG



FF = 645.00  
LOT 1, BLOCK A  
BUILDING III  
13.86 ACRES  
(34,817.60 SQ. FT.)

FF = 647.00  
LOT 2, BLOCK A  
BUILDING IV  
4.862 ACRES  
(56,000 SQ. FT.)

EXCEL PARKWAY  
(80' R.O.W.) (Volume 83220, Page 2655)

**RECORD DRAWING**  
THIS DRAWING HAS BEEN REVISED TO REFLECT CONSTRUCTION RECORDS MAINTAINED AND PROVIDED BY THE CONTRACTOR FOR THIS PROJECT.  
CONTRACTOR: HILL & WILKINSON  
DATE REVISED: 05/04/01

**BENCHMARKS**

BM 1	"d" CUT SET ON THE BACK OF CURB ON THE SOUTH SIDE OF EXCEL, ±950' WEST OF ADDISON ROAD.	ELEV.=642.97
BM 2	60 D NAIL SET IN PP 2203 478 7763, ±500' NORTH OF THE CENTERLINE OF EXCEL	ELEV.=648.07
BM 3	"d" CUT SET ON THE EAST SIDEWALK OF WESTGROVE, ±190' SOUTH OF AIRBORN DR.	ELEV.=651.73
BM 4	" " CUT SET ON THE NOSE MEDIAN AT THE INTERSECTION OF EXCEL & WESTGROVE, ±45' EAST OF Q OF WESTGROVE	ELEV.=645.69



THE SEAL APPEARING ON THIS DOCUMENT WAS AUTHORIZED BY STEVEN A. MARKUSSEN, P.E. 70990 ON 07/26/00. ALTERATION OF A SEALED DOCUMENT WITHOUT PROPER NOTIFICATION TO THE RESPONSIBLE ENGINEER IS AN OFFENSE UNDER THE TEXAS ENGINEERING PRACTICE ACT.

REVISED 05/04/01  
REVISED 10/11/00

Pacheco Koch Consulting Engineers  
9401 LBJ FREEWAY SUITE 300 DALLAS, TEXAS 75243 972.235.3031

**GRADING PLAN**  
**ADDITION OFFICE / WAREHOUSE COMPLEX**  
**LOTS 1 & 2, BLOCK A**  
**TOWN OF ADDISON, TEXAS**

DESIGN	DRAWN	DATE	SCALE	NOTES	FILE	NO.
CJW	JLM	JULY 26, 2000	1"=40'			<b>C3.2</b>

JLM  
05/10/2001  
09:41AM  
M:\DWG\2112-05.DWG

PK FILE: 2112-00.031