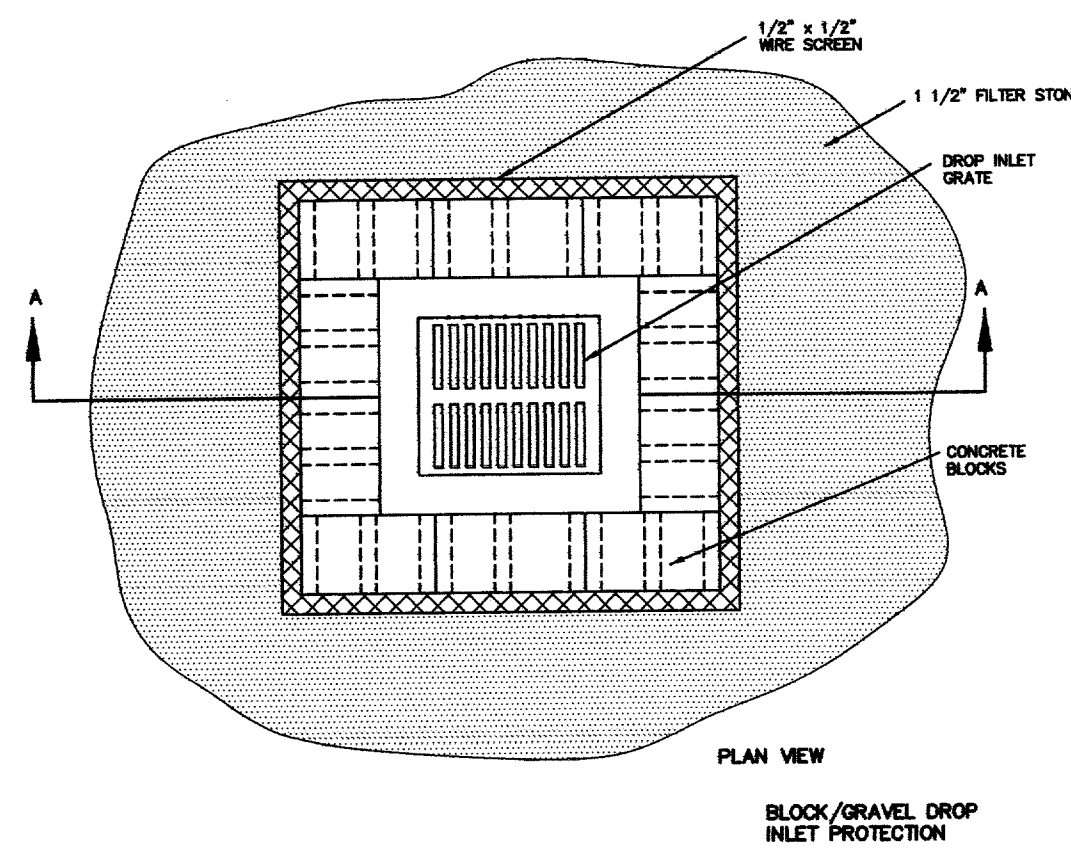
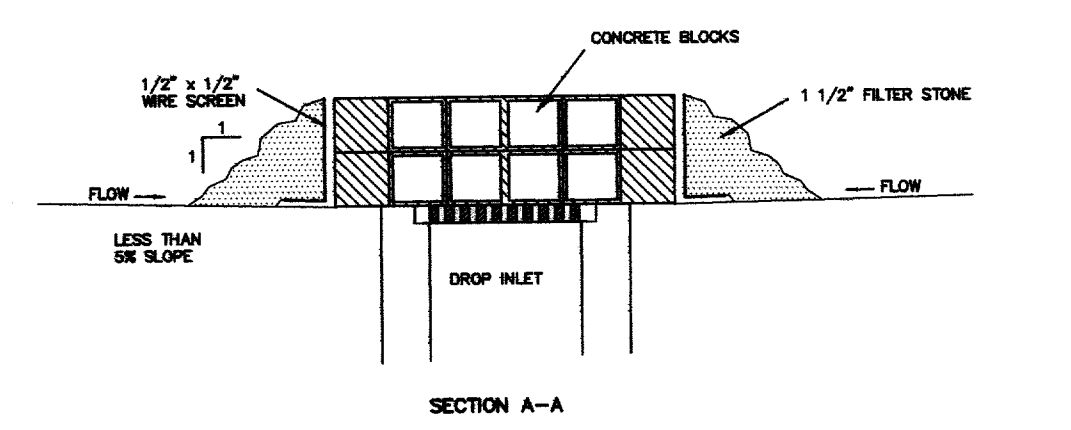
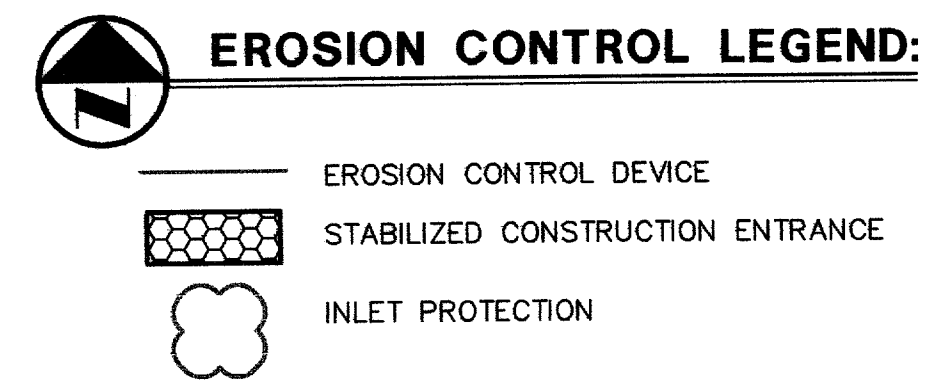
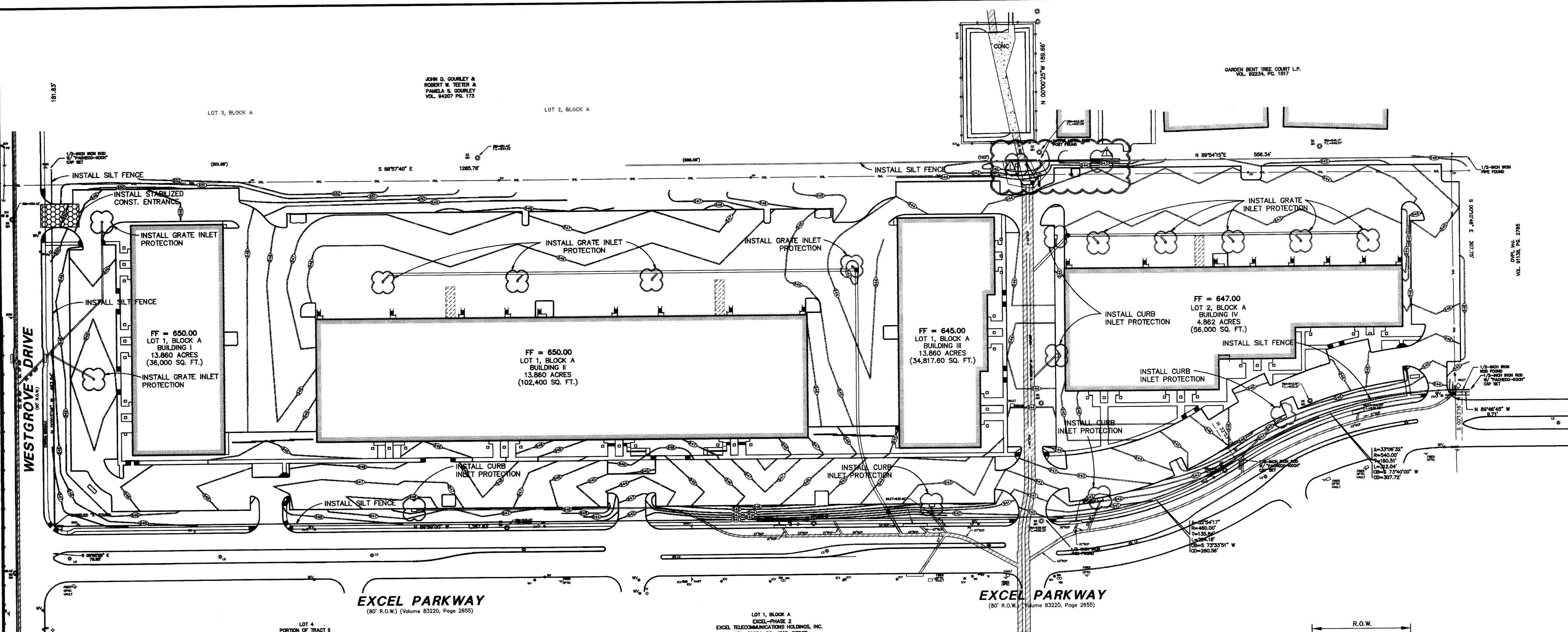
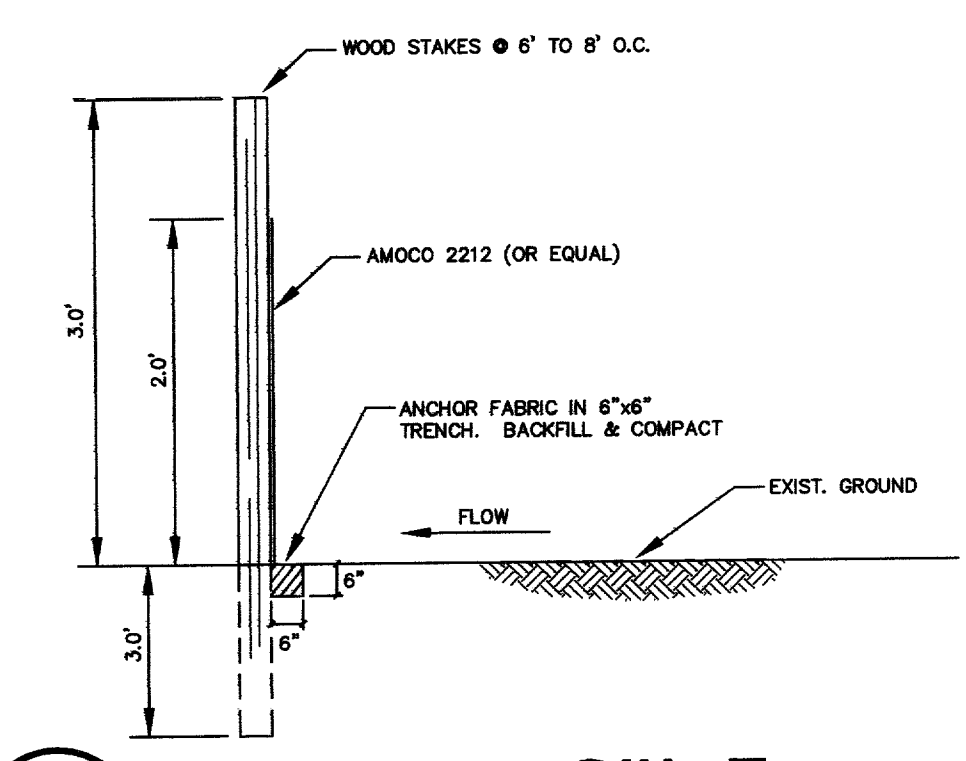


**POLLUTION CONTROL GENERAL NOTES**

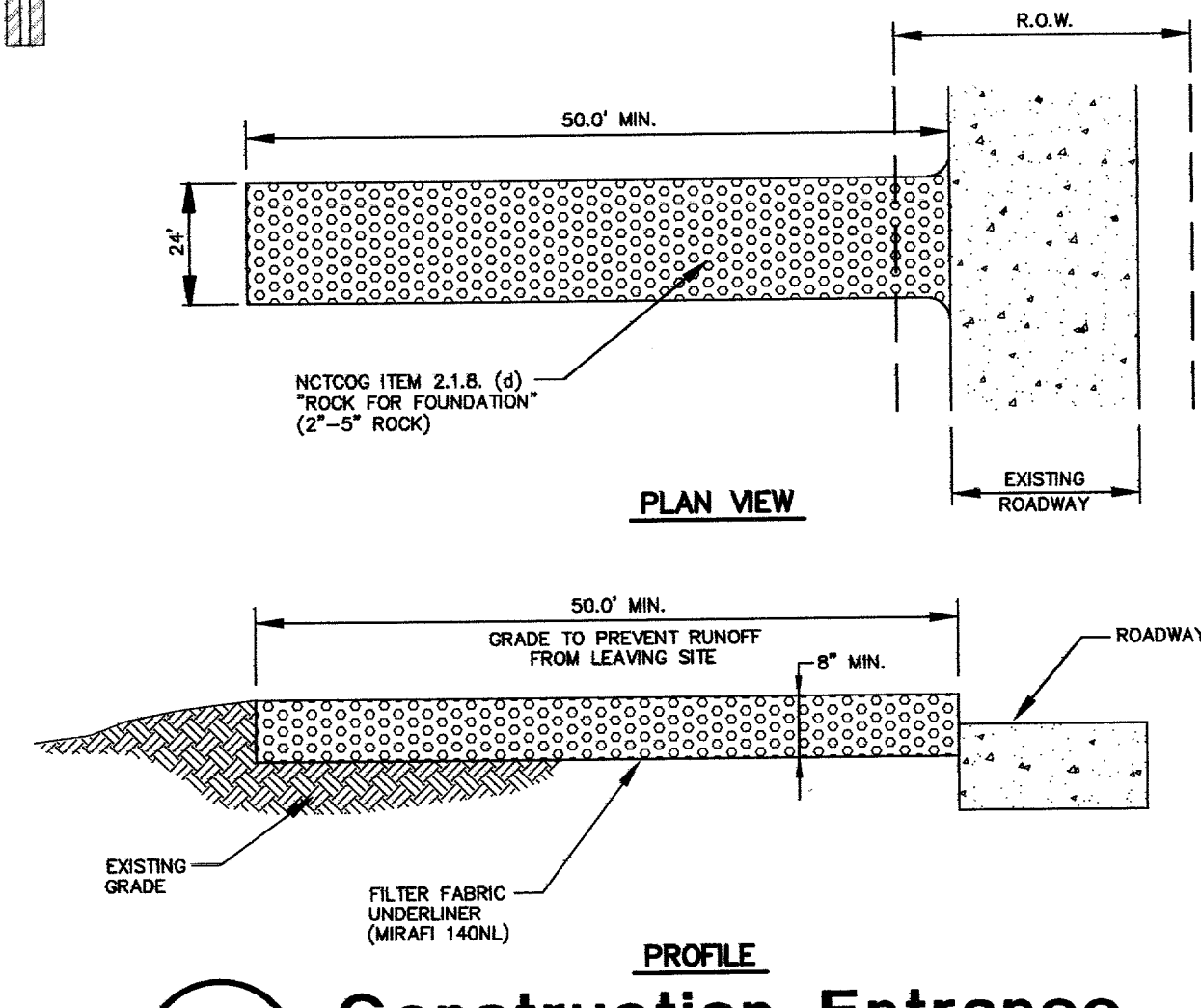
- THIS PLAN HAS BEEN PREPARED TO PROVIDE MEANS TO PREVENT OR MINIMIZE POLLUTION OF STORM
- THE CONSTRUCTION ACTIVITY INCLUDED IN THIS PLAN WILL INCLUDE:
  - CLEARING AND GRUBBING
  - ROUGH GRADING
  - FINAL GRADING
  - UTILITY INSTALLATION
  - PAVEMENT INSTALLATION
  - BUILDING CONSTRUCTION
- THE TOTAL ESTIMATED LAND AREA TO BE DISTURBED IS 18.742 ACRES.
- THE ESTIMATED RUNOFF COEFFICIENT UPON COMPLETION OF THE PROJECT IS 0.80.
- THE STORM WATER EXITING THE SITE IS COLLECTED IN AN EXISTING DRAINAGE SYSTEM MAINTAINED BY THE TOWN OF ADDISON, TEXAS.
- THE SOILS ON THE SITE ARE GENERALLY EXPANSIVE CLAYS.
- THE CONTRACTOR SHALL PROVIDE AND MAINTAIN EROSION PROTECTION AROUND THE WORK AREA PERIMETER AND AT ALL INLET MOUTHS PRIOR TO COMMENCING WORK AND UNTIL THE WORK AREA HAS BEEN STABILIZED.
- THE CONTRACTOR WILL REMOVE ALL EXCESS SOIL FROM CONSTRUCTION VEHICLES PRIOR TO EXITING THE SITE.
- ALL DISTURBED AREAS WHICH WILL NOT BE RE-DISTURBED FOR A MINIMUM OF 21 DAYS MUST BE STABILIZED BY THE CONTRACTOR TO CONTROL EROSION.
- THE CONTRACTOR SHALL UNDERTAKE PROPER METHODS TO REDUCE DUST GENERATION FROM THE SITE.
- THE CONTRACTOR MUST COMPLY WITH FEDERAL, STATE AND LOCAL REGULATIONS REGARDING SEDIMENT AND EROSION CONTROL.
- A COPY OF THIS PLAN MUST BE KEPT AT THE CONSTRUCTION FACILITY DURING THE ENTIRE CONSTRUCTION PERIOD.
- CONSTRUCTION SEQUENCING MUST PROVIDE FOR THE EXCAVATION OF AN ON-SITE BASIN AS A SEDIMENT COLLECTION BASIN PRIOR TO THE DISTURBANCE OF GREATER THAN 10 ACRES OF LAND.
- ALL FINISHED GRADES ARE TO BE HYDROMULCHED, SPOT SOODED OR SEEDED AND WATERED UNTIL GROWTH IS ESTABLISHED ON AND OFF-SITE.
- A PIT OR WASH OUT BASIN SHALL BE CONSTRUCTED ON-SITE BY THE CONTRACTOR FOR THE "WASH OUT" OF CONCRETE TRUCKS.
- A BERM OR OTHER SPILL PROTECTION MEASURE SHALL BE USED FOR ANY TEMPORARY FUEL STORAGE TANK ON SITE.
- IF "SUMP" PUMPS ARE USED TO REMOVE WATER FROM EXCAVATED AREAS, FILTER THE DISCHARGE TO REMOVE SEDIMENT AND OTHER POLLUTANTS BEFORE THE WATER LEAVES THE SITE.
- TO PREVENT DAMAGE TO VEGETATION IN DOWNSTREAM WATER COURSES, LIMIT ANY PROPOSED LIME STABILIZATION OPERATIONS TO THAT WHICH CAN BE MIXED AND COMPACTED BY THE END OF EACH WORK DAY. GEOTEXTILE FABRIC IS NOT EFFECTIVE IN FILTERING LIME SINCE THE GRAIN SIZE IS SMALLER THAN THE OPENING IN THE FABRIC.
- VEHICLE PARKING AREAS, STAGING AREAS, STOCKPILES, SPOILS, ETC. SHALL BE LOCATED SUCH THAT THEY WILL NOT ADVERSELY AFFECT STORM WATER QUALITY. OTHERWISE, COVERING OR ENCRICLING THE AREAS WITH PROTECTIVE MEASURES SHALL BE NECESSARY.
- STORE ALL TRASH AND BUILDING MATERIALS WASTE IN AN ENCLOSURE UNTIL PROPER DISPOSAL AT OFF-SITE FACILITIES.
- CONTRACTOR IS TO USE DETENTION AREAS AS TEMPORARY SEDIMENT BASINS DURING CONSTRUCTION.
- DETENTION AREAS ARE TO BE UTILIZED AS TEMPORARY SEDIMENTATION BASINS UNTIL LESS THAN 10 ACRES OF DISTURBED AREA IS CONTRIBUTING TO SAID DISCHARGE LOCATION



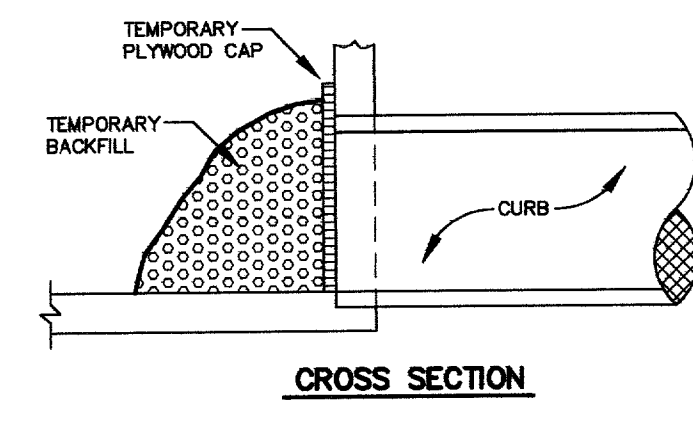
**4 Drop Inlet**  
NOT TO SCALE



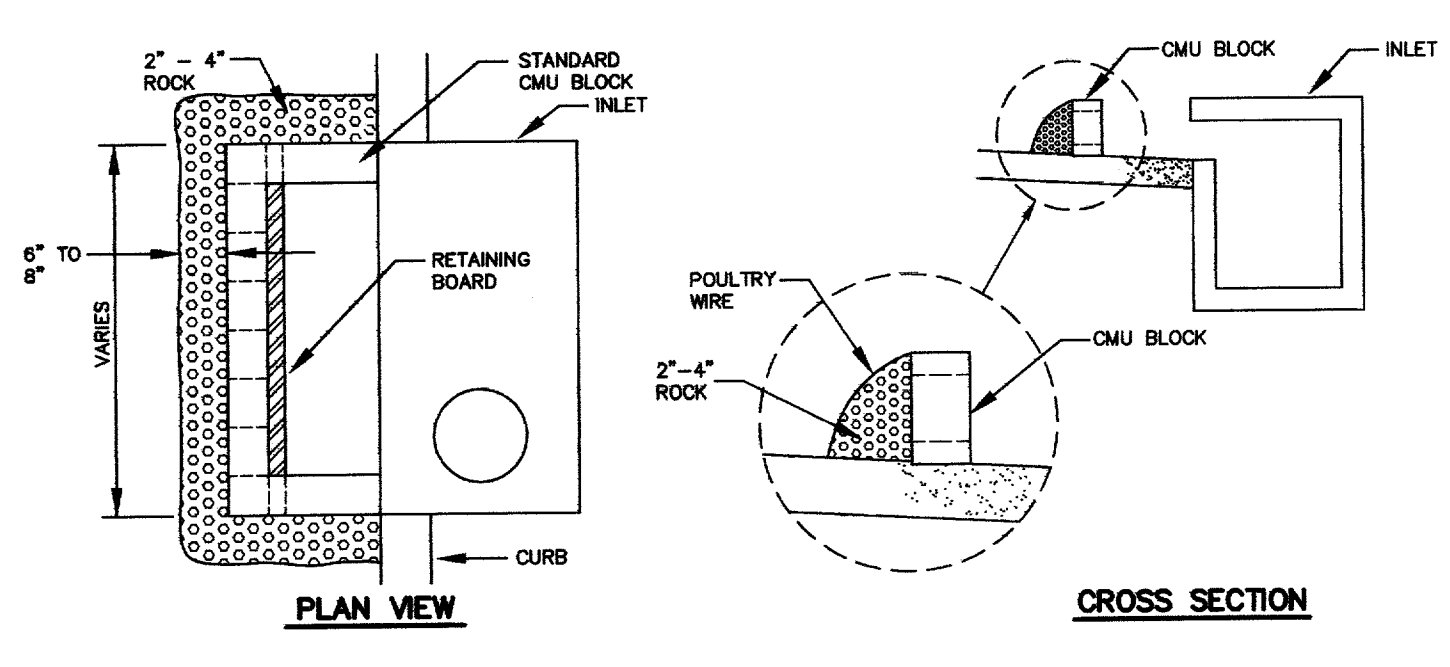
**1 Low Flow Silt Fence Detail**  
NOT TO SCALE



**2 Construction Entrance**  
NOT TO SCALE



**3 Curb-Inlet-Protection-A**  
NOT TO SCALE



**5 Curb Inlet Protection**  
NOT TO SCALE

**RECORD DRAWING**

THIS DRAWING HAS BEEN REVISED TO REFLECT CONSTRUCTION RECORDS MAINTAINED AND PROVIDED BY THE CONTRACTOR FOR THIS PROJECT.

CONTRACTOR: HILL & WILKINSON  
DATE REVISED: 05/04/01

REVISD 05/04/01  
REVISD 10/11/00



THE SEAL APPEARING ON THIS DOCUMENT WAS AUTHORIZED BY STEVEN A. MARKUSSEN, P.E. 70090 ON 07/26/00. ALTERATION OF A SEALED DOCUMENT WITHOUT PROPER NOTIFICATION TO THE RESPONSIBLE ENGINEER IS AN OFFENSE UNDER THE TEXAS ENGINEERING PRACTICE ACT.

**Pacheco Koch Consulting Engineers**  
9401 LBJ FREEWAY SUITE 300 DALLAS, TEXAS 75243 972.235.3031

**EROSION CONTROL PLAN**  
ADDISON OFFICE / WAREHOUSE COMPLEX  
LOTS 1 & 2, BLOCK A  
WESTGROVE/BENT TREE PLAZA ADDITION  
TOWN OF ADDISON, TEXAS

DESIGN	DRAWN	DATE	SCALE	NOTES	FILE	NO.
CJE	JLM	JULY 26, 2000	1"=80'			<b>C7.1</b>

PROJECT NO.: 9956  
PREPARED BY: JLM  
CHECKED BY: CJL  
DATE: 05/04/01  
REVISIONS:  
SHEET NO. + TITLE: **C7.1**  
EROSION CONTROL PLAN

CONSULTANT  
RIVE OGDEN FIGUEROA DICKSON WELLS PLLC  
ARCHITECT  
703 McKinney Avenue, Suite 401  
Dallas, TX 75202-1052  
214-854-8855  
214-854-8855  
www.rofdw.com  
Web Page

PROJECT  
ADDISON TECH CENTER  
OFFICE / FLEX / WAREHOUSE PROJECT  
ADDISON, TEXAS  
P.R. DEVELOPMENT SERVICES, INC.