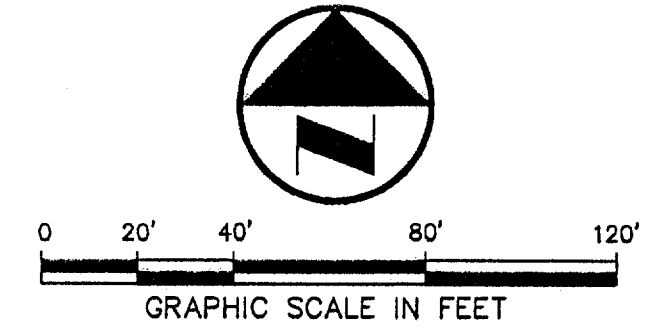


VICINITY MAP



LEGEND

- B BOLLARD
- EM ELECTRIC METER
- PP POWER POLE
- LS LIGHT STANDARD
- WM WATER METER
- WV WATER VALVE
- ICV IRRIGATION CONTROL VALVE
- FH FIRE HYDRANT
- CL CLEANOUT
- MH MANHOLE
- GM GAS METER
- TSC TRAFFIC SIGNAL CONTROL
- TSF TRAFFIC SIGNAL POLE
- TELE TELEPHONE BOX
- TV TV BOX
- FP FLAG POLE
- EM ELECTRIC METER
- TSN TRAFFIC SIGN
- PL PROPERTY LINE
- OHL O.H. POWER LINE
- TEL U/G TELEPHONE LINE
- W U/G WATER LINE
- G U/G GAS LINE
- F FENCE
- B.F.R. BARRIER FREE RAMP

DALLAS
MCALLEN
HARLINGEN
Suite 401
703 McKinney Avenue
Dallas, TX 75202-1052
214-571-0616
Fax: 214-571-0616
www.rodaw.com

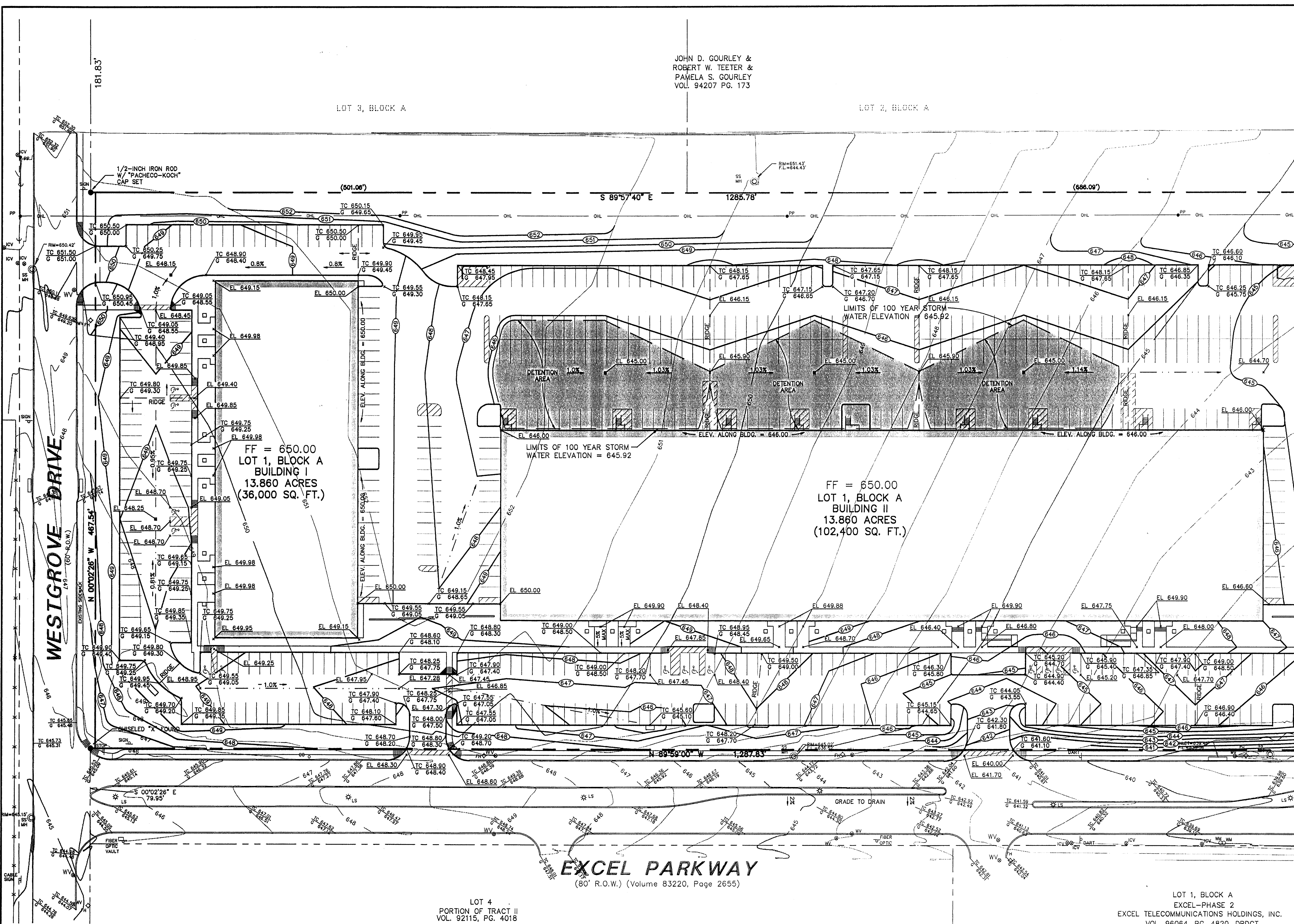
ARCHITECT
RIKE
ODDEN
FIGUEROA
DICKSON
WELLS
PLC

PROJECT
CONSULTANT
ADDISON TECH CENTER
OFFICE / FLEX / WAREHOUSE PROJECT
ADDISON, TEXAS
FR DEVELOPMENT SERVICES, INC.

JOHN D. GOURLEY &
ROBERT W. TEETER &
PAMELA S. GOURLEY
VOL. 94207 PG. 173

LOT 3, BLOCK A

LOT 2, BLOCK A



MATCH LINE SEE SHEET

RECORD DRAWING
THIS DRAWING HAS BEEN REVISED TO REFLECT CONSTRUCTION RECORDS MAINTAINED AND PROVIDED BY THE CONTRACTOR FOR THIS PROJECT.
CONTRACTOR: HILL & WILKINSON
DATE REVISED: 05/04/01

GRADING AND DRAINAGE GENERAL NOTES

- REFER TO GEOTECHNICAL REPORT FOR REQUIREMENTS REGARDING FILL COMPACTION AND MOISTURE CONTENT.
- UNLESS NOTED, ALL FILL IS TO BE COMPACTED TO A MINIMUM OF 95% STANDARD PROCTOR DENSITY WITHIN 3" OF OPTIMUM MOISTURE CONTENT. FILL TO BE PLACED IN A MAXIMUM OF 6" LIFTS.
- ALL WALKS TO HAVE A MAXIMUM GROSS SLOPE OF 2%.
- GRADING OF ALL HANDICAPPED SPACES AND ROUTES TO CONFORM TO STATE, LOCAL AND FEDERAL GUIDELINES.
- UNLESS NOTED, STORM DRAIN LINES MAY BE OF THE FOLLOWING MATERIALS:
A. RCP C-76, CLASS III
B. ADS N-12
C. HANCOCK HI-Q
AND INSTALLED IN ACCORDANCE WITH MANUFACTURER'S SPECIFICATIONS.
- UNLESS NOTED, GRATE INLET TO BE "AMERICAN INDUSTRIAL PRE-CAST PRODUCTS, INC." PRECAST CATCH BASIN, SIZED AS SHOWN, OF APPROVED EQUAL.
- FINAL PAVING, CURB AND SIDEWALK ELEVATIONS WILL BE PLACED AT PLUS OR MINUS 0.03 FOOT.
- REFER TO LANDSCAPE SPECIFICATION FOR SEEDING AND SOODING REQUIREMENTS.
- ANY CONCRETE, ROCK OR MATERIAL DEEMED UNSUITABLE FOR SUBGRADE, BY ENGINEER, SHALL BE DISPOSED OF OFFSITE AT CONTRACTOR'S EXPENSE.

- TRENCH BACKFILL MATERIAL SHALL CONFORM TO THE REQUIREMENTS OF NCTCOG ITEM 6.2.10, AND SHALL BE MECHANICALLY COMPACTED IN ACCORDANCE WITH NCTCOG ITEM 6.2.9 TO A MINIMUM OF 95% STANDARD PROCTOR DENSITY UNLESS OTHERWISE SHOWN ON THESE PLANS OR STATED IN THE STANDARD CITY SPECIFICATIONS.
- EMBEDMENT SHALL CONFORM TO THE REQUIREMENTS OF NCTCOG ITEM 6.2.9 UNLESS OTHERWISE SHOWN ON THESE PLANS OR STATED IN THE STANDARD CITY SPECIFICATIONS.
- A ROUND MANHOLE COVER MEETING CITY SPECIFICATIONS SHALL BE PLACED IN ALL INLET TOPS. THE MANHOLE COVER SHALL BE PLACED NEAR THE OUTLET PIPE.
- ALL CONCRETE FOR INLETS AND DRAINAGE STRUCTURES SHALL CONFORM TO NCTCOG ITEM 7.4.5, CLASS "A" UNLESS OTHERWISE SHOWN ON THESE PLANS OR STATED IN STANDARD CITY SPECIFICATIONS.
- CRUSHED STONE BEDDING OR APPROVED EQUAL SHALL BE PROVIDED BY THE CONTRACTOR WHEN ROCK IS ENCOUNTERED IN TRENCHES. THERE SHALL BE NO ADDITIONAL PAY ITEM OF THE CRUSHED STONE BEDDING.
- IF REQUIRED DUE TO CONSTRUCTION, POWER POLES TO BE BRACED OR RELOCATED AT CONTRACTOR'S EXPENSE.

BENCHMARKS

BM	DESCRIPTION	ELEV.
BM 1	"d" CUT SET ON THE BACK OF CURB ON THE SOUTH SIDE OF EXCEL, ±950' WEST OF ADDISON ROAD.	ELEV.=642.92
BM 2	60 D NAIL SET IN PP 2203 478 7763, ±500' NORTH OF THE CENTERLINE OF EXCEL	ELEV.=648.07
BM 3	"d" CUT SET ON THE EAST SIDEWALK OF WESTGROVE, ±190' SOUTH OF AIRBORN DR.	ELEV.=651.73
BM 4	" " CUT SET ON THE NOSE MEDIAN AT THE INTERSECTION OF EXCEL & WESTGROVE, ±45' EAST OF C OF WESTGROVE	ELEV.=645.69



THE SEAL APPEARING ON THIS DOCUMENT WAS AUTHORIZED BY STEVEN A. MARKUSSEN, P.E. 70990 ON 07/28/00. ALTERATION OF A SEALED DOCUMENT WITHOUT PROPER NOTIFICATION TO THE RESPONSIBLE ENGINEER IS AN OFFENSE UNDER THE TEXAS ENGINEERING PRACTICE ACT.

REVISED 05/04/01

Pacheco Koch Consulting Engineers
9401 LBJ FREEWAY SUITE 300 DALLAS, TEXAS 75243 972.235.3031

GRADING PLAN
ADDISON OFFICE / WAREHOUSE COMPLEX
LOTS 1 & 2, BLOCK A
WESTGROVE/BENT TREE PLAZA ADDITION
TOWN OF ADDISON, TEXAS

DESIGN	DRAWN	DATE	SCALE	NOTES	FILE	NO.
CJE	JLM	JULY 26, 2000	1"=40'			C3.1

PROJECT NO.: 9958
PREPARED BY: JLM
CHECKED BY: CJE
DATE: 07/26/00
REVISIONS:

SHEET NO. + TITLE:
C3.1

GRADING
PLAN