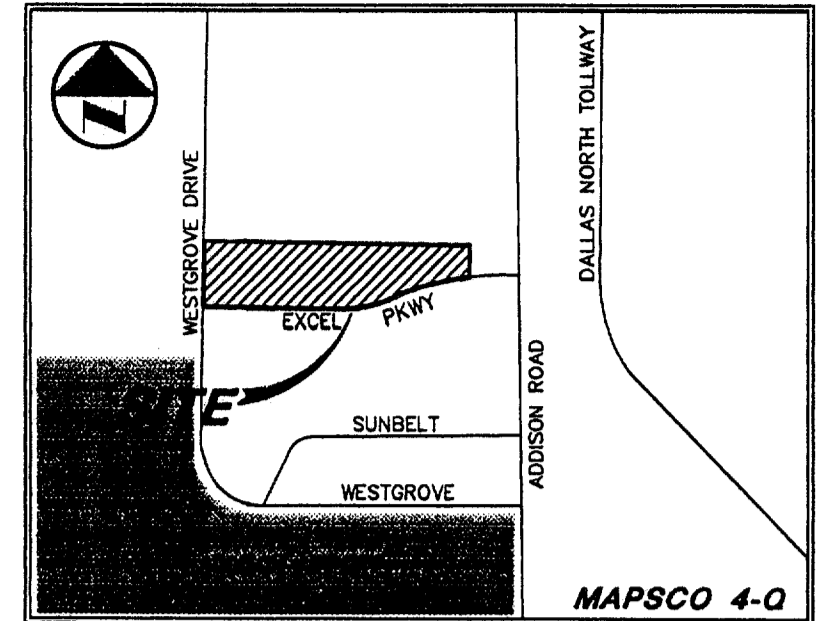


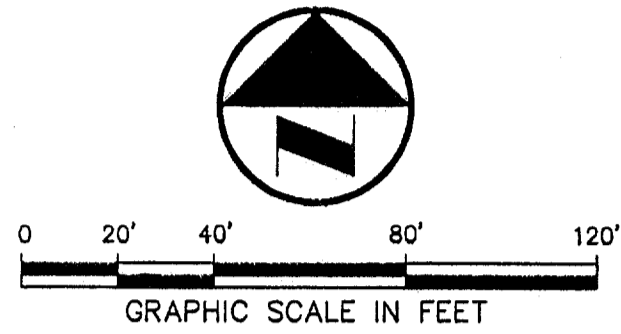
MATCH LINE SEE SHEET

GARDEN BENT TREE COURT L.P.
VOL. 92234, PG. 1517

- LEGEND**
- B. BOLLARD
 - E. ELECTRIC METER
 - PP. POWER POLE
 - LS. LIGHT STANDARD
 - WM. WATER METER
 - WV. WATER VALVE
 - ICV. IRRIGATION CONTROL VALVE
 - FH. FIRE HYDRANT
 - CO. CLEANOUT
 - MH. MANHOLE
 - GM. GAS METER
 - TSC. TRAFFIC SIGNAL CONTROL
 - TSP. TRAFFIC SIGNAL POLE
 - TELE. TELEPHONE BOX
 - TV. TV BOX
 - FP. FLAG POLE
 - EM. ELECTRIC METER
 - TR. TRAFFIC SIGN
 - PL. PROPERTY LINE
 - O.H. O.H. POWER LINE
 - TEL. U/G TELEPHONE LINE
 - W. U/G WATER LINE
 - G. U/G GAS LINE
 - B.F.R. BARRIER FREE RAMP



VICINITY MAP



ROF DW
ARCHITECTS

DALLAS
McAULEN
HARLINGEN
703 McKinney Avenue, Suite 401
Dallas, TX 75202-6716
Facsimile: 214-954-0655
Web Page: www.rodw.com

PROJECT
RIKE
OGDEN
FIGUEROA
DICKSON
WELLS
FLLC

CONSULTANT
ADDISON TECH CENTER
OFFICE / FLEX / WAREHOUSE PROJECT
ADDISON, TEXAS
P.R. DEVELOPMENT SERVICES, INC.

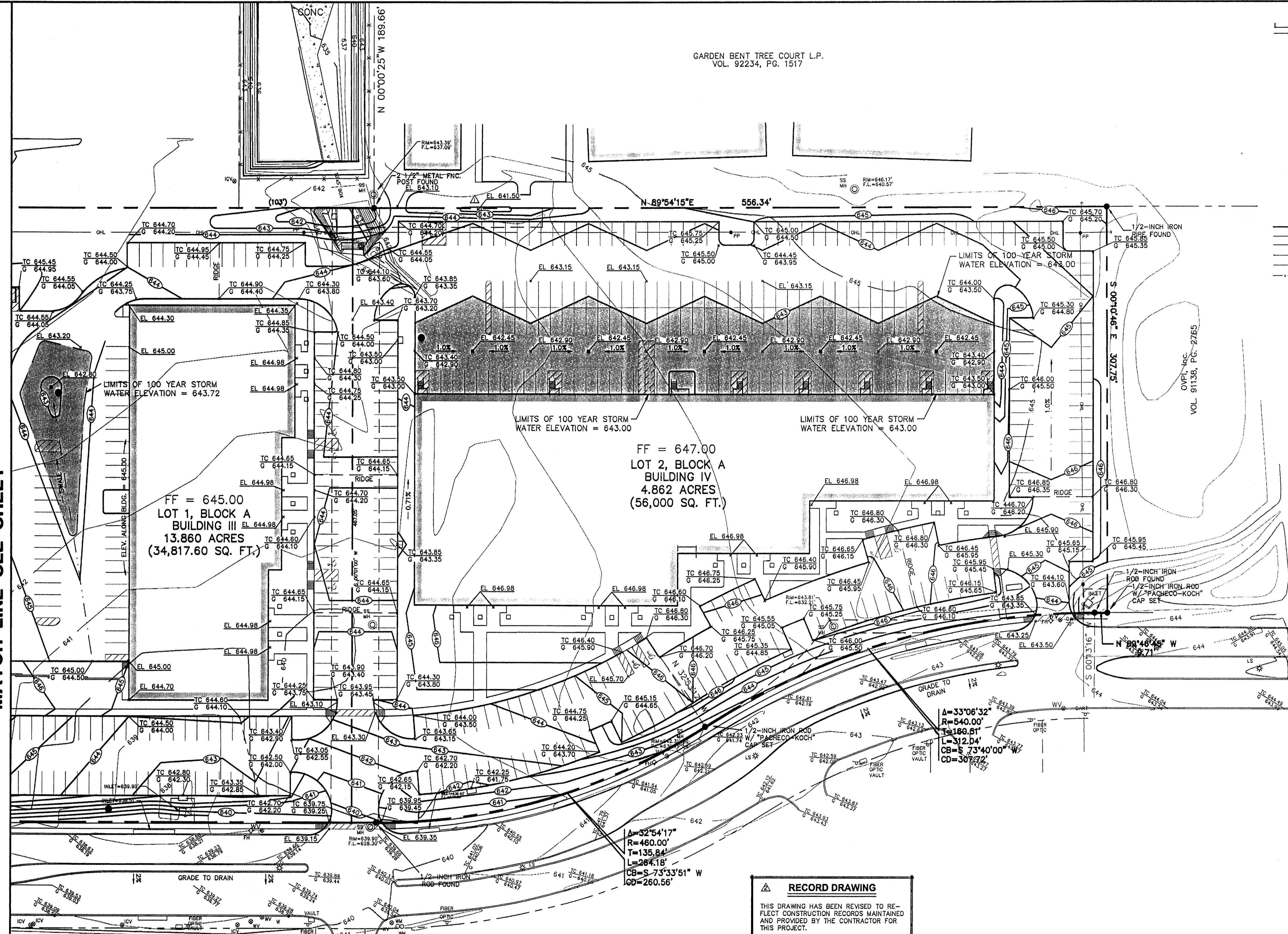
PROJECT NO.: 9958
PREPARED BY: JLM
CHECKED BY: CJE
DATE: 05/04/01
REVISIONS:

SHEET NO. + TITLE:

C3.2

GRADING
PLAN

PK FILE: 2112-00.031



FF = 645.00
LOT 1, BLOCK A
BUILDING III
13.86 ACRES
(34,817.60 SQ. FT.)

FF = 647.00
LOT 2, BLOCK A
BUILDING IV
4.86 ACRES
(56,000 SQ. FT.)

EXCEL PARKWAY
(80' R.O.W.) (Volume 83220, Page 2655)

RECORD DRAWING

THIS DRAWING HAS BEEN REVISED TO REFLECT CONSTRUCTION RECORDS MAINTAINED AND PROVIDED BY THE CONTRACTOR FOR THIS PROJECT.

CONTRACTOR: HILL & WILKINSON
DATE REVISED: 05/04/01

BENCHMARKS

BM 1	"d" CUT SET ON THE BACK OF CURB ON THE SOUTH SIDE OF EXCEL, ±950' WEST OF ADDISON ROAD.	ELEV.=642.97
BM 2	60 D NAIL SET IN PP 2203 478 7763, ±500' NORTH OF THE CENTERLINE OF EXCEL	ELEV.=648.07
BM 3	"d" CUT SET ON THE EAST SIDEWALK OF WESTGROVE, ±190' SOUTH OF AIRBORN DR.	ELEV.=651.73
BM 4	" " CUT SET ON THE NOSE MEDIAN AT THE INTERSECTION OF EXCEL & WESTGROVE, ±45' EAST OF C OF WESTGROVE	ELEV.=645.69



THE SEAL APPEARING ON THIS DOCUMENT WAS AUTHORIZED BY STEVEN A. MARKUSSEN, P.E. 70090 ON 07/26/00. ALTERATION OF A SEALED DOCUMENT WITHOUT PROPER NOTIFICATION TO THE RESPONSIBLE ENGINEER IS AN OFFENSE UNDER THE TEXAS ENGINEERING PRACTICE ACT.

REVISED 05/04/01
REVISED 10/11/00

Pacheco Koch Consulting Engineers
9401 LBJ FREEWAY SUITE 300 DALLAS, TEXAS 75243 972.235.3031

GRADING PLAN
ADDISON OFFICE / WAREHOUSE COMPLEX
LOTS 1 & 2, BLOCK A
WESTGROVE/BENT TREE PLAZA ADDITION
TOWN OF ADDISON, TEXAS

DESIGN	DRAWN	DATE	SCALE	NOTES	FILE	NO.
CJE	JLM	JULY 26, 2000	1"=40'			C3.2

JM MCBAIN - 6:41AM
05/10/2001
M:\0112-00.DWG