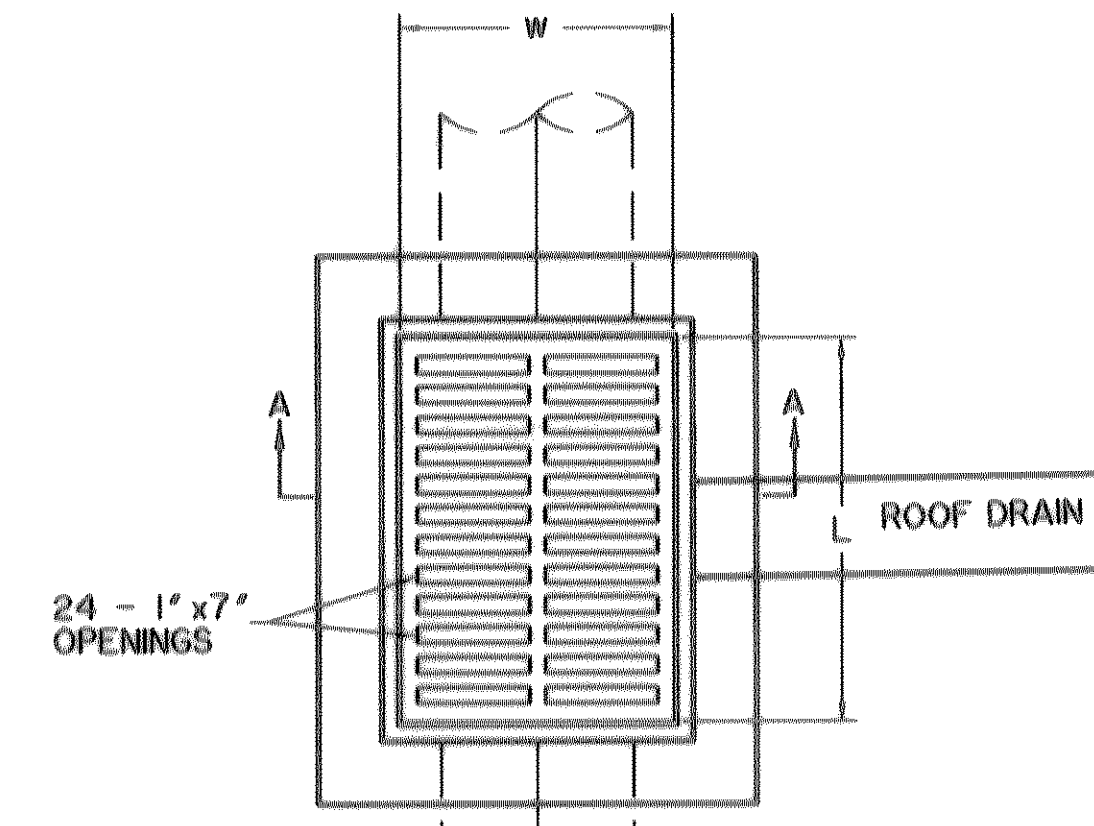
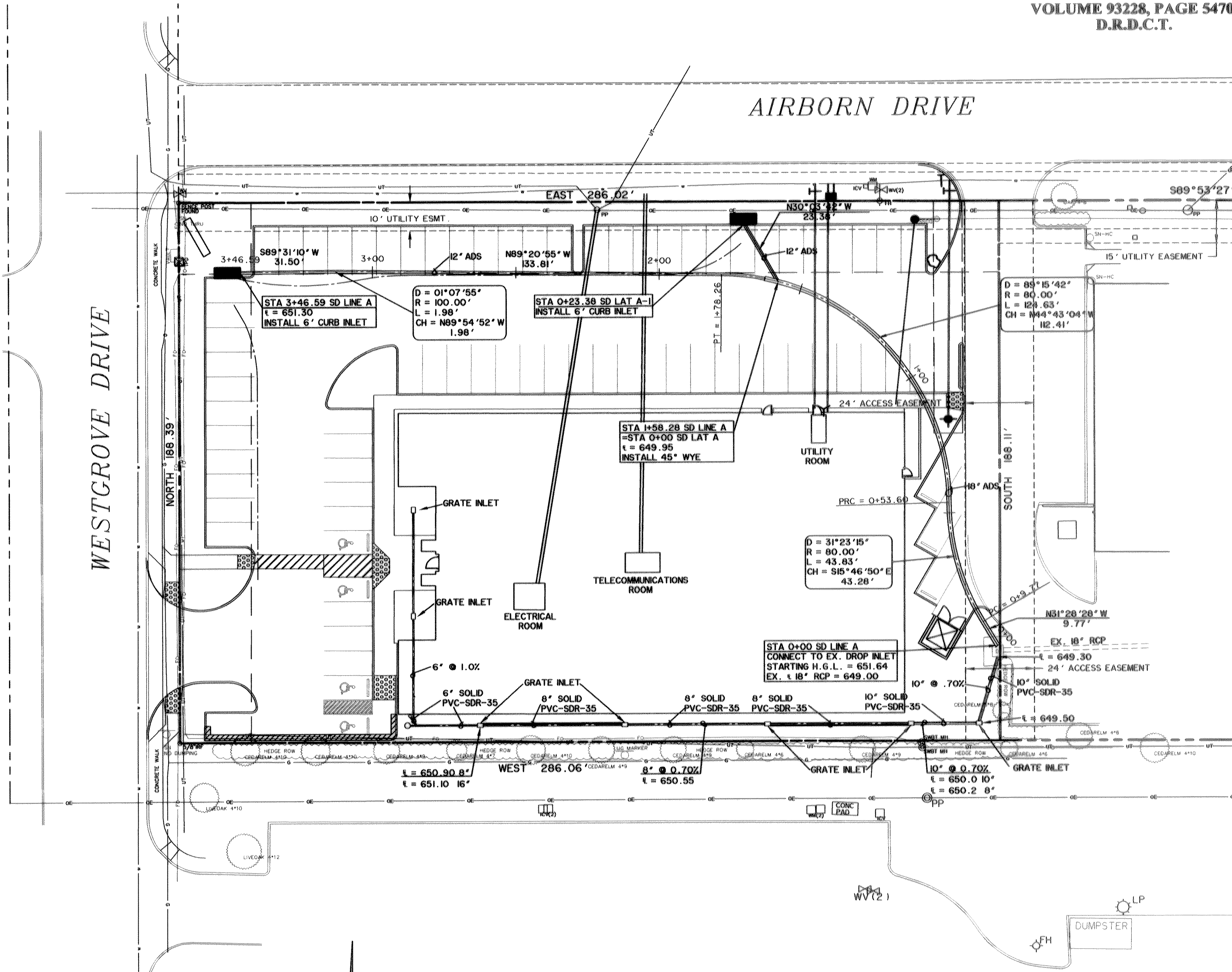
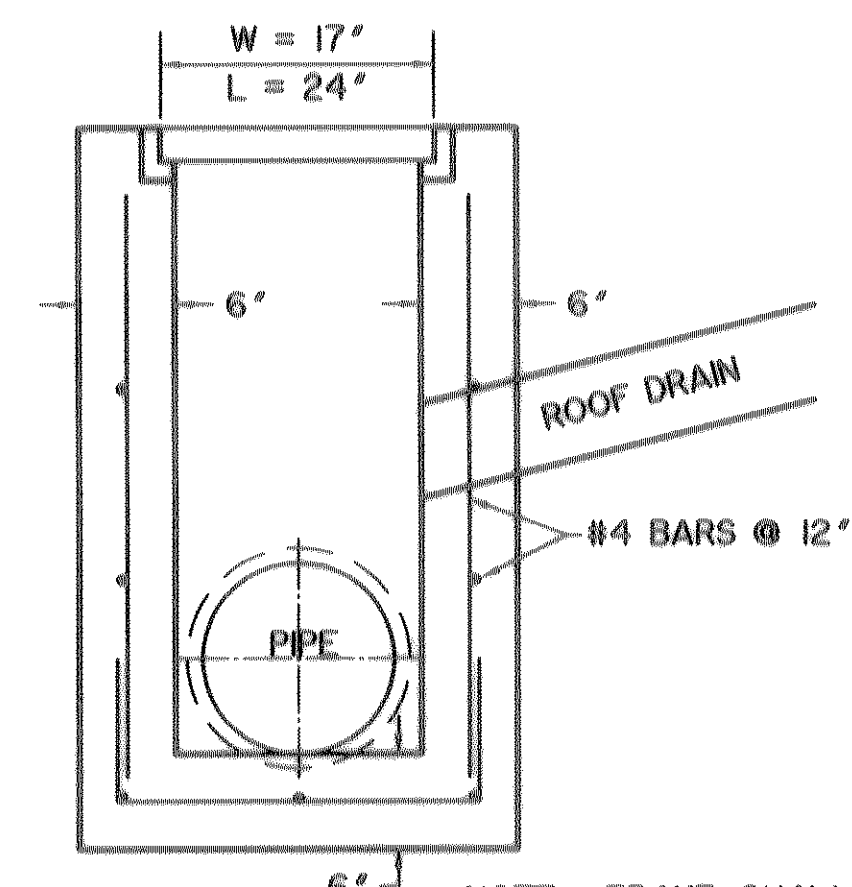


AIRBORN DRIVE

WESTGROVE DRIVE



NOTE: GRATE SHALL BE CATALOG NO. R-4641-A AS MANUFACTURED BY NEENAH FOUNDRY COMPANY, OR EQUAL.

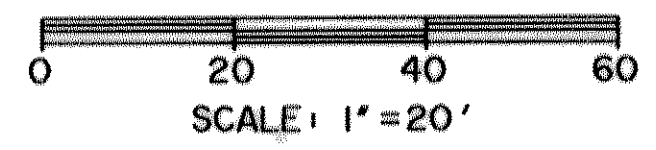


NOTE: FRAME SHALL BE CATALOG NO. R-4899 ANGLE FRAME AS MANUFACTURED BY NEENAH FOUNDRY COMPANY, OR EQUAL.

**GRATE INLET DETAIL**  
N.T.S.

**CAUTION !!!**  
UNDERGROUND UTILITIES

EXISTING UTILITIES AND UNDERGROUND FACILITIES INDICATED ON THESE PLANS HAVE BEEN LOCATED FROM REFERENCE INFORMATION SUPPLIED BY VARIOUS OWNERS OF THE FACILITIES. THE ENGINEER DOES NOT ACCEPT THE RESPONSIBILITY FOR THE UTILITY LOCATIONS SHOWN. IT SHALL BE THE RESPONSIBILITY OF THE CONTRACTOR TO VERIFY BOTH HORIZONTALLY AND VERTICALLY THE LOCATION OF ALL EXISTING UTILITIES AND UNDERGROUND FACILITIES PRIOR TO CONSTRUCTION, TO TAKE NECESSARY PRECAUTIONS IN ORDER TO PROTECT ALL FACILITIES ENCOUNTERED, AND TO NOTIFY THE ENGINEER PROMPTLY OF ALL CONFLICTS OF THE WORK WITH EXISTING FACILITIES. THE CONTRACTOR SHALL PRESERVE AND PROTECT ALL EXISTING UTILITIES FROM DAMAGE DURING CONSTRUCTION. ANY DAMAGE BY THE CONTRACTOR TO EXISTING UTILITIES SHALL BE REPAIRED BY THE CONTRACTOR AT HIS EXPENSE.



**RECORD DRAWINGS**  
07-16-08

THE INFORMATION SHOWN ON THESE PLANS HAS BEEN REVISED TO REFLECT CHANGES TO THE PUBLIC IMPROVEMENTS MADE DURING CONSTRUCTION PROVIDED TO THE ENGINEER BY THE CONTRACTOR UNLESS NOTED OTHERWISE. THE CONSTRUCTION OF THE PUBLIC IMPROVEMENTS IS IN GENERAL CONFORMANCE WITH THESE PLANS BASED ON THE INFORMATION PROVIDED BY THE CONTRACTOR AND THE RESPONSIBILITY FOR ACCURACY AND COMPLETENESS BELONGS TO THE CONTRACTOR.

7/16/08  
DATE

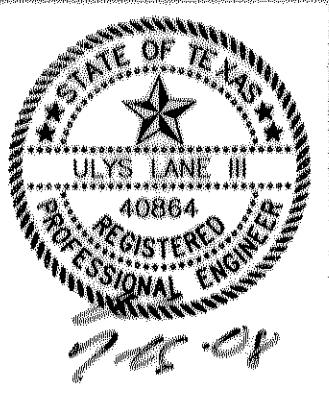
ULYS LANE, 111

PREPARED BY:  
**WIER & ASSOCIATES, INC.**  
ENGINEERS SURVEYORS LAND PLANNERS  
701 HIGHLANDER BLVD., SUITE 300 ARLINGTON, TEXAS 76015 METRO (817)467-7700  
1380 U.S. HIGHWAY 287 N. SUITE 101 MANSFIELD, TEXAS 76063 METRO (817)477-6700  
6849 ELM STREET FRIEDRICH, TEXAS 75004 METRO (214)387-9000  
www.WierAssociates.com

NO.	DATE	DESCRIPTION	BY

LOT 4, BLOCK A  
SOJOURN PLAZA  
TOWN OF ADDISON  
DALLAS COUNTY, TEXAS

**STORM DRAINAGE PLAN**



COPYRIGHT ©  
WIER & ASSOCIATES, INC.  
LAST SHEET EDIT  
DATE 07-16-2008  
WA# 01095.03  
**SHEET NO. D101**