

TIME: 11:51 FILE: 0109503-DAMAP.dwg

100 YEAR STORM RUNOFF CALCULATIONS								
DESIGNATION AREA	TOTAL AREA (ACRES)	INCREMENTAL AREAS		TOTAL CA	TC	I ₁₀₀	Q ₁₀₀	COMMENTS
		COMMERCIAL C=0.85	UNDEVELOPED C=0.40					
A-1	0.32	0.32		0.27	10	8.74	2.4	6' CURB INLET
A-2	0.37	0.37		0.31	10	8.74	2.7	6' CURB INLET
A-3	0.47	0.47		0.40	10	8.74	3.5	EX DROP INLET
A-4	0.19	0.19		0.16	10	8.74	1.4	AREA DRAINS
B-1	0.14	0.14		0.12	10	8.74	1.0	SHEET FLOW TO ROAD

VOLUME 93228, PAGE 5470, D.R.D.C.T.

LEGEND	
	PROPOSED CONTOUR
	EXISTING CONTOUR
	PROPOSED STORM DRAIN
	EXISTING STORM DRAIN
	MAJOR DRAINAGE AREA SUB-DIVIDE
	DRAINAGE AREA DESIGNATION DRAINAGE AREA (ACRES)

PREPARED BY:
WIA WIER & ASSOCIATES, INC.
 ENGINEERS SURVEYORS LAND PLANNERS
 701 HIGHLANDER BLD., SUITE 300 ARLINGTON, TEXAS 76015 METRO (817)467-7700
 1380 U.S. HIGHWAY 287 N. SUITE 101 WANSFRED, TEXAS 76063 METRO (817)477-0700
 6849 ELM STREET FRISCO, TEXAS 75034 METRO (214)387-8000
 www.wierassociates.com

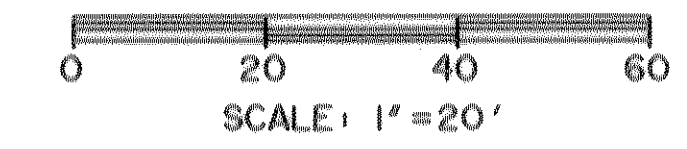
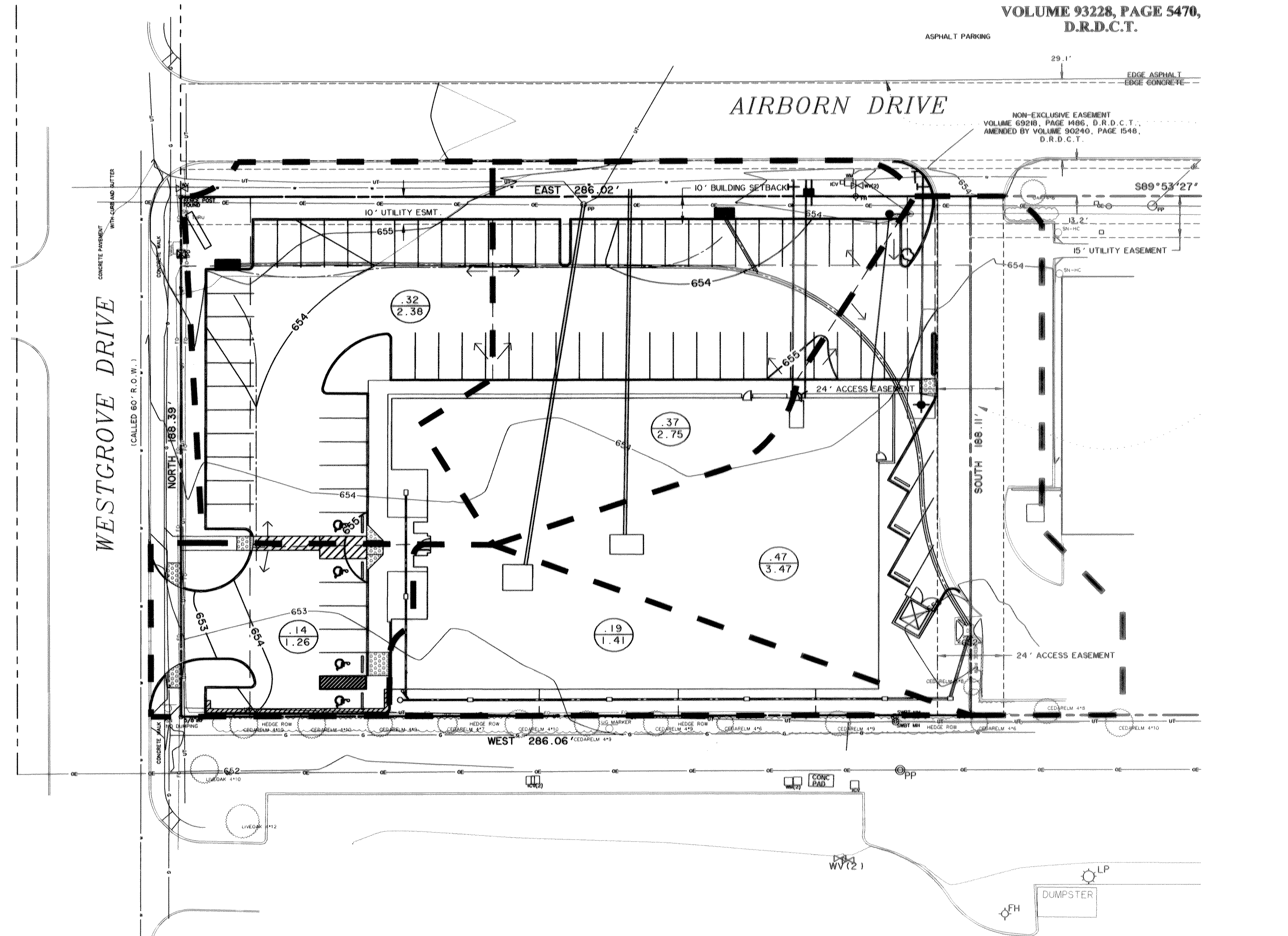
NO.	DATE	DESCRIPTION	BY

LOT 4, BLOCK A
 SOJOURN PLAZA
 TOWN OF ADDISON
 DALLAS COUNTY, TEXAS

DRAINAGE AREA MAP



COPYRIGHT ©
 WIER & ASSOCIATES, INC.
 LAST SHEET EDIT
 DATE 07-15-2008
 WA# 01095.03
SHEET NO. 001



CAUTION !!!
 UNDERGROUND UTILITIES

EXISTING UTILITIES AND UNDERGROUND FACILITIES REVEALED ON THESE PLANS HAVE BEEN LOCATED FROM REFERENCE INFORMATION SUPPLIED BY VARIOUS OWNERS OF THE FACILITIES. THE ENGINEER DOES NOT ACCEPT THE RESPONSIBILITY FOR THE UTILITY LOCATIONS SHOWN. IT SHALL BE THE RESPONSIBILITY OF THE CONTRACTOR TO VERIFY BOTH HORIZONTALLY AND VERTICALLY THE LOCATION OF ALL EXISTING UTILITIES AND UNDERGROUND FACILITIES PRIOR TO CONSTRUCTION. TO TAKE NECESSARY PRECAUTIONS IN ORDER TO PROTECT ALL FACILITIES ENCOUNTERED, AND TO NOTIFY THE ENGINEER PROMPTLY OF ALL CONFLICTS OF THE WORK WITH EXISTING FACILITIES. THE CONTRACTOR SHALL PRESERVE AND PROTECT ALL EXISTING UTILITIES FROM DAMAGE DURING CONSTRUCTION. ANY DAMAGE BY THE CONTRACTOR TO EXISTING UTILITIES SHALL BE REPAIRED BY THE CONTRACTOR AT HIS EXPENSE.

RECORD DRAWINGS
 07-16-08

THE INFORMATION SHOWN ON THESE PLANS HAS BEEN REVISED TO REFLECT CHANGES TO THE PUBLIC IMPROVEMENTS MADE DURING CONSTRUCTION PROVIDED TO THE ENGINEER BY THE CONTRACTOR UNLESS NOTED OTHERWISE. THE CONSTRUCTION OF THE PUBLIC IMPROVEMENTS IS IN GENERAL CONFORMANCE WITH THESE PLANS BASED ON THE INFORMATION PROVIDED BY THE CONTRACTOR AND THE RESPONSIBILITY FOR ACCURACY AND COMPLETENESS BELONGS TO THE CONTRACTOR.

ULYS LANE, III
 DATE 7-16-08