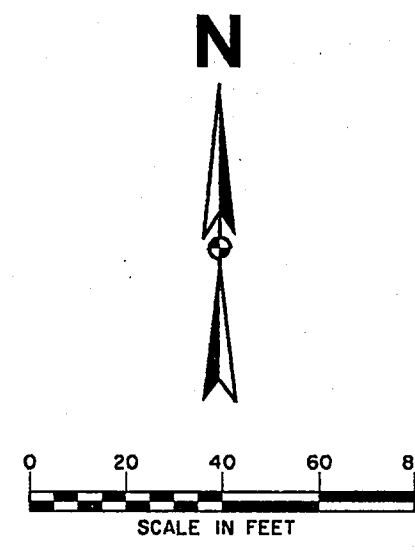


TSAY CONCRETE PARKING LOT ADDITION

PINEAPPLE PLACE



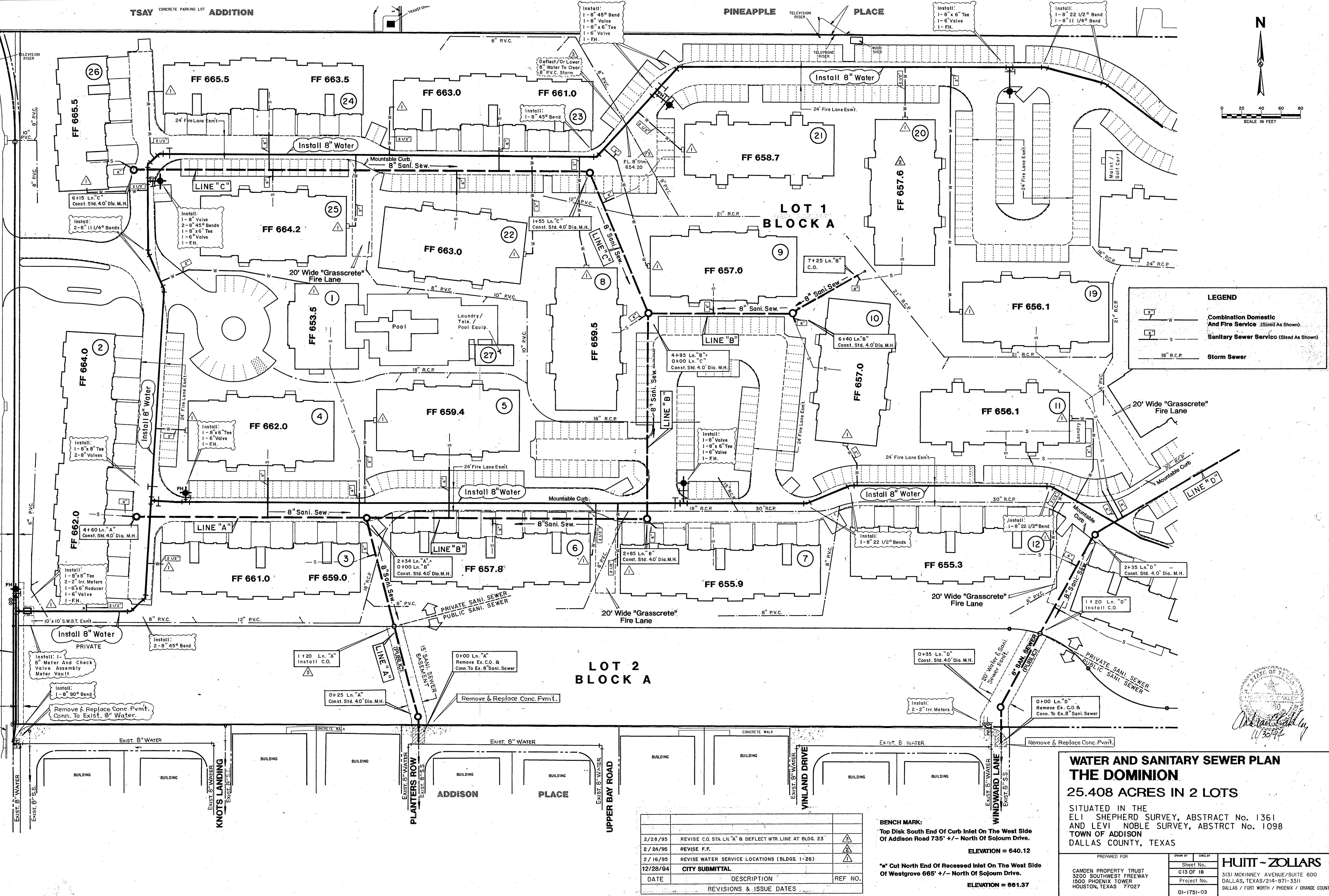
WESTGROVE ROAD

CONCRETE PAVING

5' WATER LINE EASEMENT

EXIST. 8" WATER

EXIST. 8" WATER



LEGEND

- Combination Domestic And Fire Service (Sized As Shown)
- Sanitary Sewer Service (Sized As Shown)
- Storm Sewer

LOT 2 BLOCK A

LOT 1 BLOCK A

**WATER AND SANITARY SEWER PLAN
THE DOMINION**

25.408 ACRES IN 2 LOTS

SITUATED IN THE
ELI SHEPHERD SURVEY, ABSTRACT No. 1361
AND LEVI NOBLE SURVEY, ABSTRACT No. 1098
TOWN OF ADDISON
DALLAS COUNTY, TEXAS

DATE	DESCRIPTION	REF. NO.
2/28/95	REVISE C.O. STA. LN. "A" & DEFLECT WTR. LINE AT BLDG. 23	▲
2/24/95	REVISE F.F.	▲
2/16/95	REVISE WATER SERVICE LOCATIONS (BLDG. 1-26)	▲
12/28/94	CITY SUBMITTAL	
REVISIONS & ISSUE DATES		

BENCH MARK:
Top Disk South End Of Curb Inlet On The West Side
Of Addison Road 735' +/- North Of Sojour Drive.
ELEVATION = 640.12

*" Cut North End Of Recessed Inlet On The West Side
Of Westgrove 665' +/- North Of Sojour Drive.
ELEVATION = 661.37

PREPARED FOR
CAMDEN PROPERTY TRUST
3200 SOUTHWEST FREEWAY
1500 PHOENIX TOWER
HOUSTON, TEXAS 77027

Drawn By: CHS
Sheet No. C13 OF 18
Project No. 01-1751-03

HUITT - ZOLLARS
3131 MCKINNEY AVENUE/SUITE 600
DALLAS, TEXAS 75244
DALLAS / FORT WORTH / PHOENIX / ORANGE COUNTY

C-13