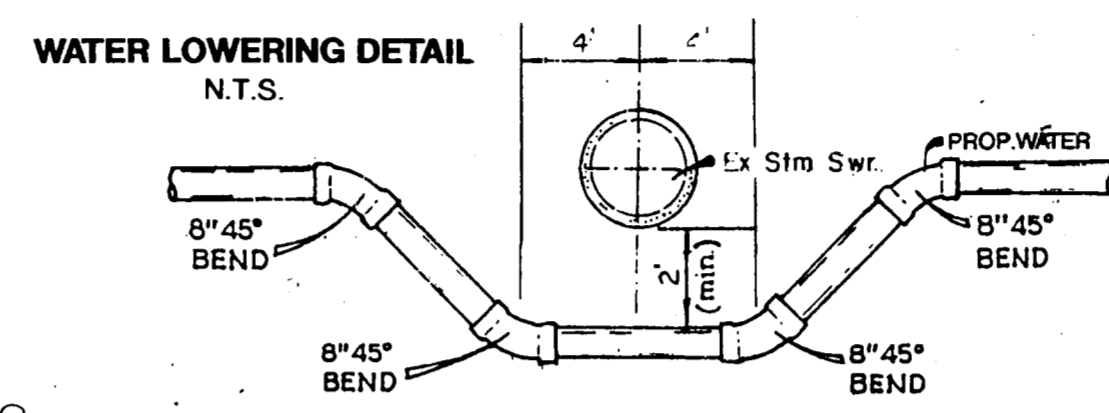
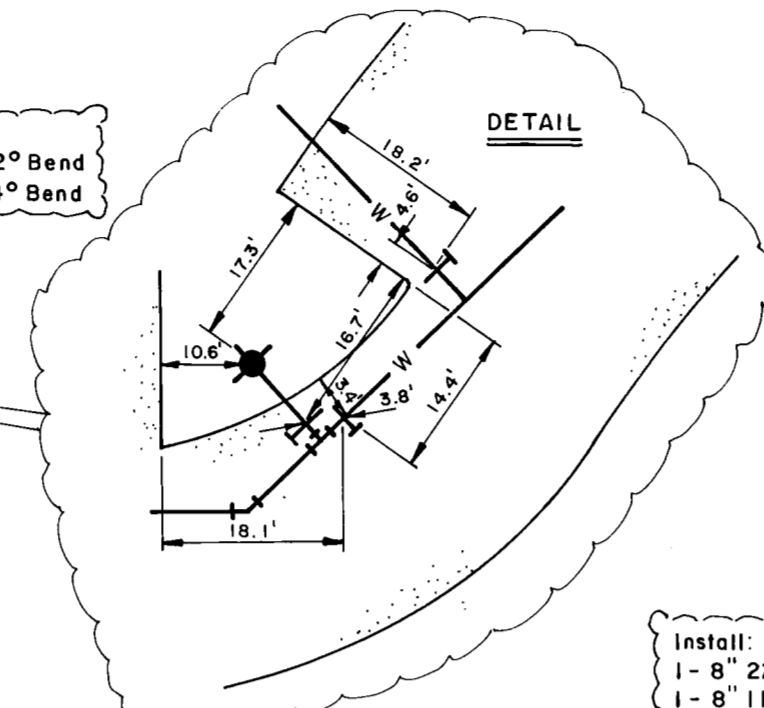
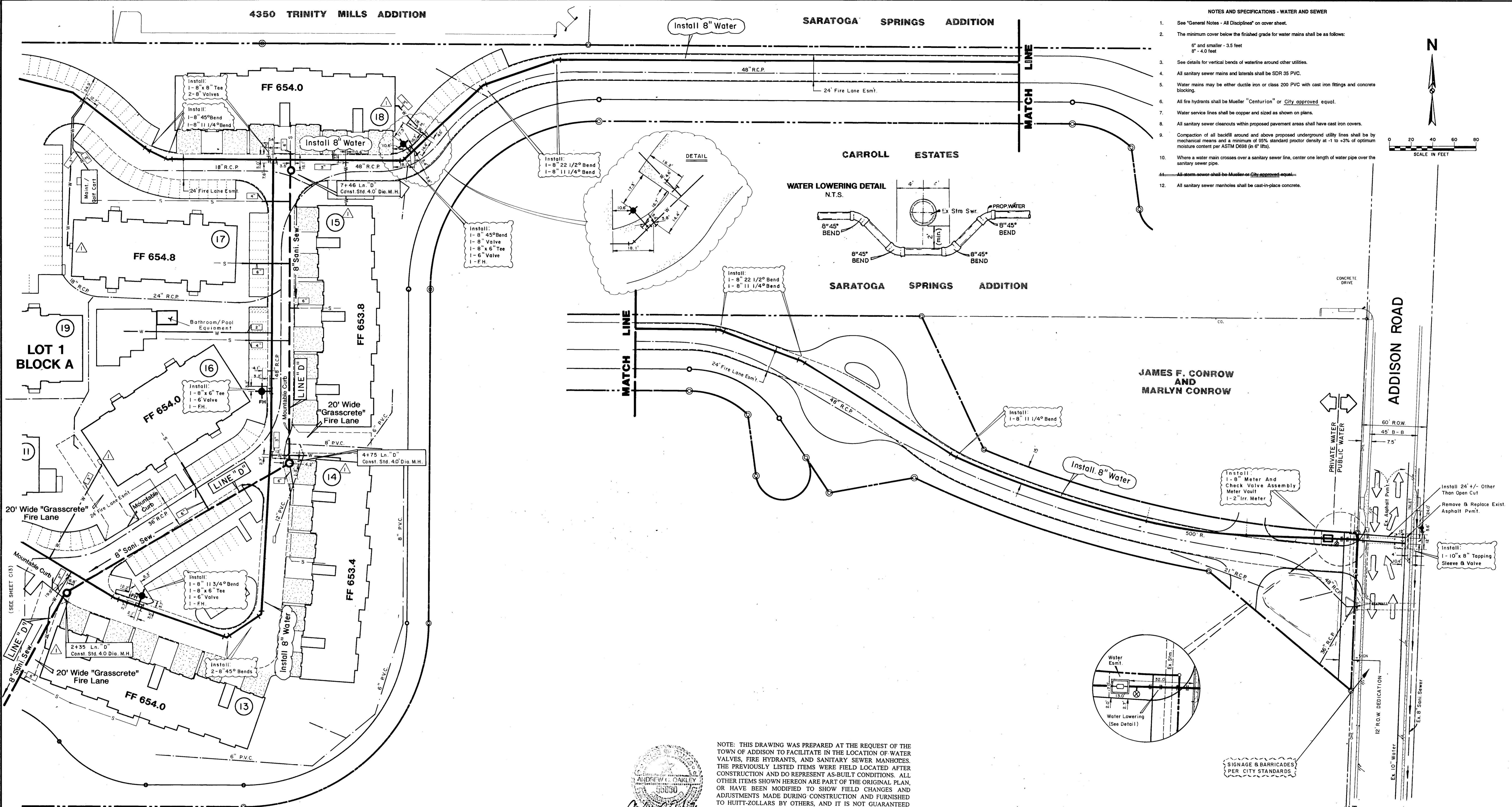
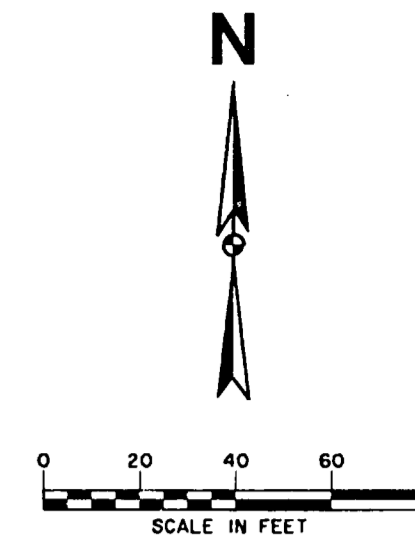


- See "General Notes - All Disciplines" on cover sheet.
- The minimum cover below the finished grade for water mains shall be as follows:  
6" and smaller - 3.5 feet  
8" - 4.0 feet
- See details for vertical bends of waterline around other utilities.
- All sanitary sewer mains and laterals shall be SDR 35 PVC.
- Water mains may be either ductile iron or class 200 PVC with cast iron fittings and concrete blocking.
- All fire hydrants shall be Mueller "Centurion" or City approved equal.
- Water service lines shall be copper and sized as shown on plans.
- All sanitary sewer cleanouts within proposed pavement areas shall have cast iron covers.
- Compaction of all backfill around and above proposed underground utility lines shall be by mechanical means and a minimum of 95% standard proctor density at -1 to +3% of optimum moisture content per ASTM D698 (in 6" lifts).
- Where a water main crosses over a sanitary sewer line, center one length of water pipe over the sanitary sewer pipe.
- All storm sewer shall be Mueller or City approved equal.
- All sanitary sewer manholes shall be cast-in-place concrete.



NOTE: THIS DRAWING WAS PREPARED AT THE REQUEST OF THE TOWN OF ADDISON TO FACILITATE IN THE LOCATION OF WATER VALVES, FIRE HYDRANTS, AND SANITARY SEWER MANHOLES. THE PREVIOUSLY LISTED ITEMS WERE FIELD LOCATED AFTER CONSTRUCTION AND DO REPRESENT AS-BUILT CONDITIONS. ALL OTHER ITEMS SHOWN HEREON ARE PART OF THE ORIGINAL PLAN, OR HAVE BEEN MODIFIED TO SHOW FIELD CHANGES AND ADJUSTMENTS MADE DURING CONSTRUCTION AND FURNISHED TO HUITT-ZOLLARS BY OTHERS, AND IT IS NOT GUARANTEED THAT THEY REPRESENT AS-BUILT CONDITIONS. THE WATER AND WASTEWATER SYSTEM HAS BEEN CONSTRUCTED IN GENERAL COMPLIANCE WITH THE DESIGN PLANS AND SPECIFICATIONS, AND, TO THE BEST OF OUR KNOWLEDGE AND BELIEF, FUNCTIONS AS DESIGNED.

ANDREW C. OAKLEY  
Professional Engineer  
No. 38860  
6/4/96

**LEGEND**

	Combination Domestic And Fire Service (Sized As Shown)
	Sanitary Sewer Service (Sized As Shown)
	Storm Sewer

DATE	DESCRIPTION	REF. NO.
9/14/95	LOCATION OF WATER VALVES, FIRE HYDRANTS, SAN SEW.MH'S	
2/16/95	REVISE WATER SERVICE LOCATIONS (BLDGS. 1 - 26)	▲
12/28/94	CITY SUBMITTAL	
	REVISIONS & ISSUE DATES	

**BENCH MARK:**  
Top Disk South End Of Curb Inlet On The West Side Of Addison Road 735' +/- North Of Sojourn Drive.  
ELEVATION = 640.12  
"u" Cut North End Of Recessed Inlet On The West Side Of Westgrove 665' +/- North Of Sojourn Drive.  
ELEVATION = 661.37

5/30/96  
**LOCATION PLAN**  
**WATER AND SANITARY SEWER**  
**THE DOMINION**  
25.408 ACRES IN 2 LOTS  
SITUATED IN THE ELI SHEPHERD SURVEY, ABSTRACT No. 1361 AND LEVI NOBLE SURVEY, ABSTRACT No. 1098 TOWN OF ADDISON, DALLAS COUNTY, TEXAS

PREPARED FOR: CAMDEN PROPERTY TRUST 3200 WESTWIND FREEWAY 1500 PHOENIX TOWER HOUSTON, TEXAS 77027	DRAWN BY: Sheet No. C14 OF 21 Project No. 01-1751-03	DESIGNED BY: 3131 MCKINNEY AVENUE/SUITE 600 DALLAS, TEXAS 75244-3311 DALLAS / FORT WORTH / PHOENIX / ORANGE COUNTY
---	--	---

**HUITT - ZOLLARS**