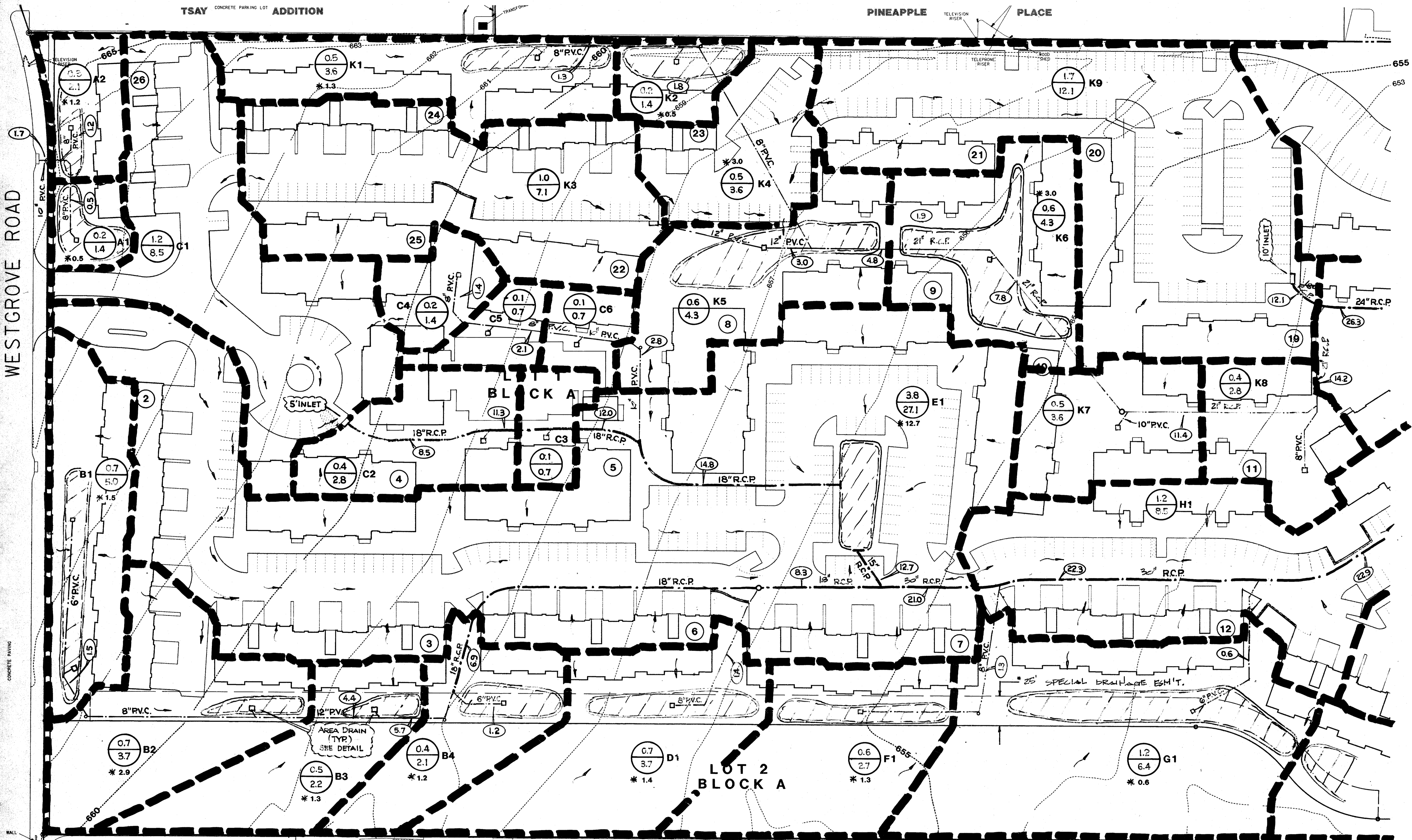


WESTGROVE ROAD



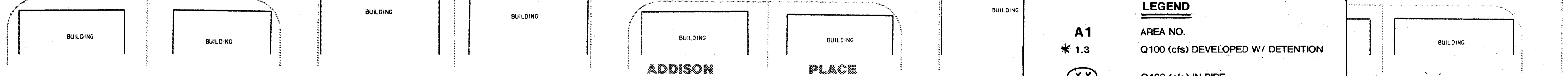
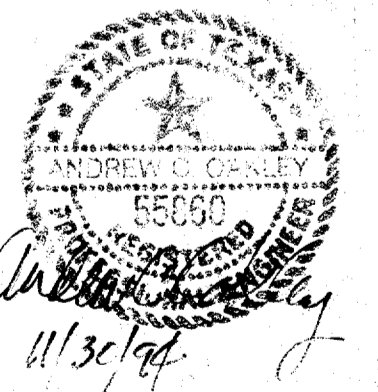
CONCRETE PAVING

MALL

AREA DRAIN (TYP) SEE DETAIL

25' SPECIAL DRAINAGE ESH'T.

LOT 2 BLOCK A



NOTE: ALL DETENTION AREAS ARE NORMALLY DRY.

DATE	DESCRIPTION	REF. NO.
12/28/94	CITY SUBMITTAL	
	REVISIONS & ISSUE DATES	

LEGEND

- A1 AREA NO.
- * 1.3 Q100 (cfs) DEVELOPED W/ DETENTION
- (X.X) Q100 (cfs) IN PIPE
- 18" R.C.P. PROP. STORM SEWER (R.C.P.)
- PROP. STORM SEWER (P.V.C.)
- DRAINAGE DIVIDE
- FLOW DIRECTION
- AREA (Ac.)
- Q100 (c.f.s.) DEVELOPED W/O DETENTION
- ▭ DETENTION AREA

BENCH MARK:
 Top Disk South End Of Curb Inlet On The West Side Of Addison Road 735' +/- North Of Sojourn Drive.
 ELEVATION = 640.12

*" Cut North End Of Recessed Inlet On The West Side Of Westgrove 665' +/- North Of Sojourn Drive.
 ELEVATION = 661.37

DRAINAGE AREA MAP
THE DOMINION
 25.408 ACRES IN 2 LOTS

SITUATED IN THE
 ELI SHEPHERD SURVEY, ABSTRACT No. 1361
 AND LEVI NOBLE SURVEY, ABSTRACT No. 1098
 TOWN OF ADDISON
 DALLAS COUNTY, TEXAS

Sheet No. C7 OF 18	HUITT - ZOLLARS 3131 MCKINNEY AVENUE/SUITE 600 DALLAS, TEXAS 75244-3311 DALLAS / FORT WORTH / PHOENIX / ORANGE COUNTY
Project No.	
01-1751-03	

CAMDEN PROPERTY TRUST
 3200 SOUTHWEST FREEWAY
 1500 PHOENIX TOWER
 HOUSTON, TEXAS 77027