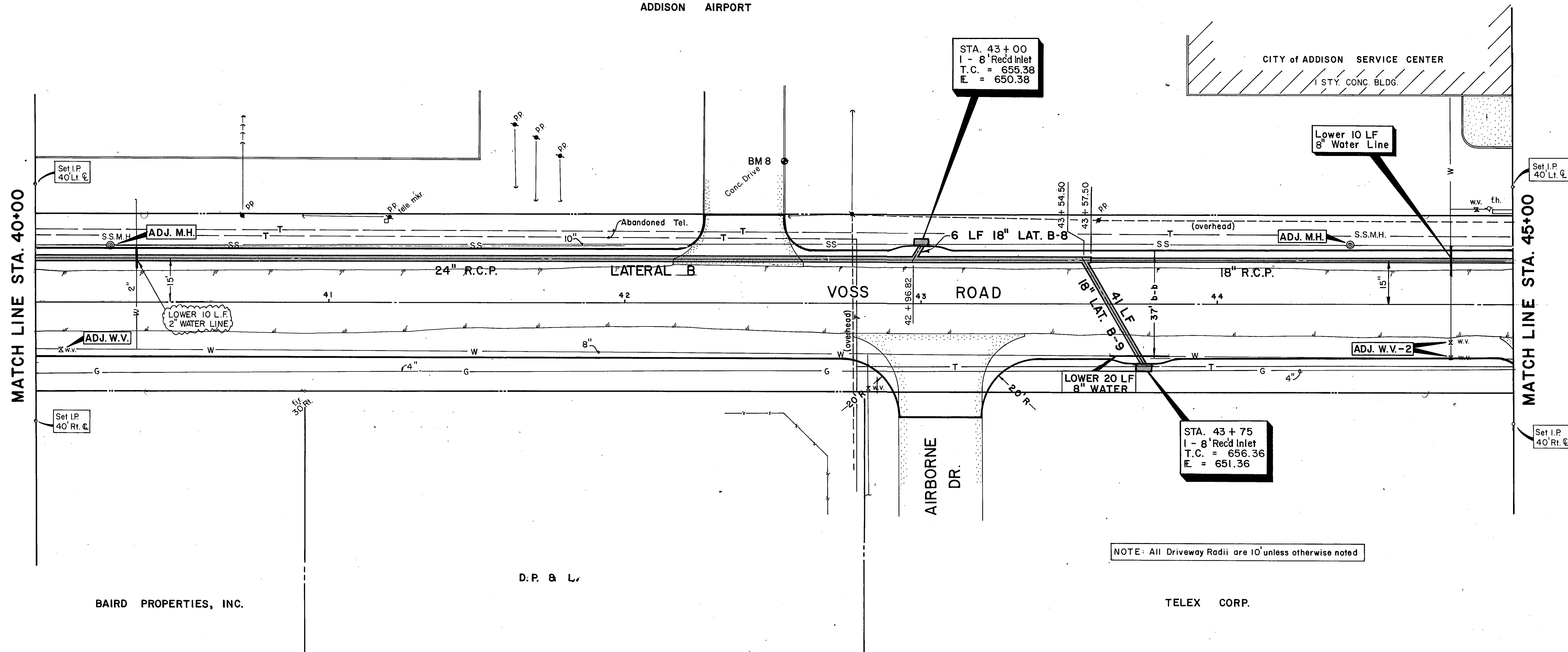
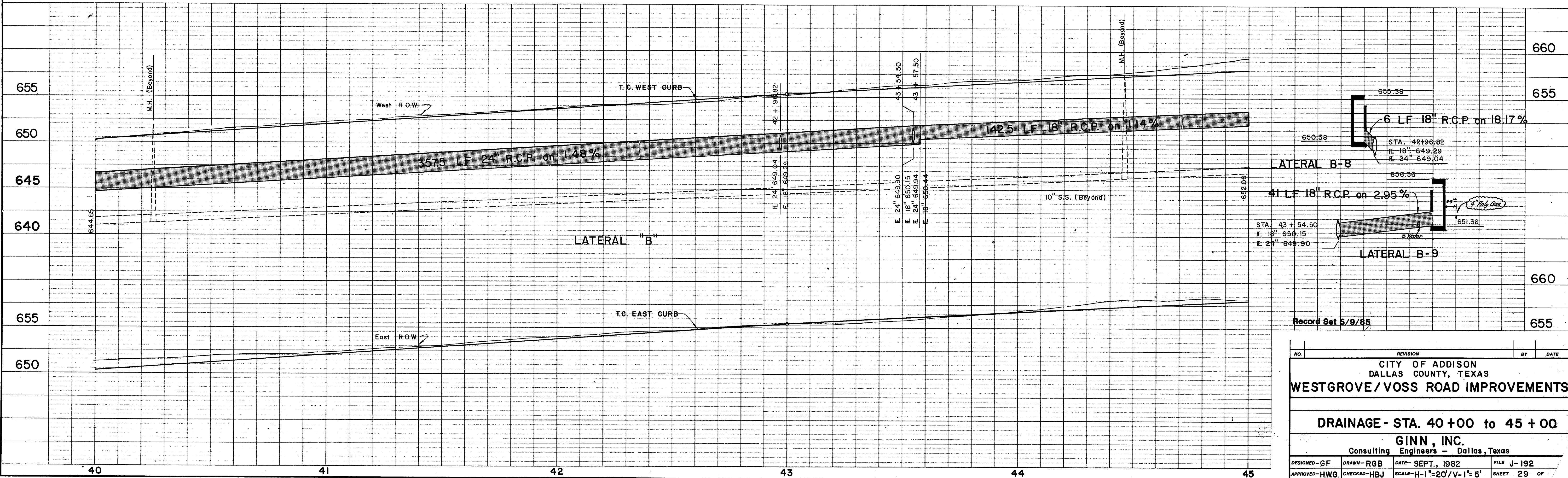


ADDISON AIRPORT



NOTE: All Driveway Radii are 10' unless otherwise noted

B.M.#8 - "□" cut on T.C. No. side of Drive
50' Lt. Sta. 42+55
ELEV. 654.92



NO.	REVISION	BY	DATE
CITY OF ADDISON DALLAS COUNTY, TEXAS			
WESTGROVE/VOSS ROAD IMPROVEMENTS			
DRAINAGE - STA. 40+00 to 45+00			
GINN, INC. Consulting Engineers - Dallas, Texas			
DESIGNED - GF	DRAWN - RGB	DATE - SEPT., 1982	FILE J-192
APPROVED - HWG	CHECKED - HBJ	SCALE - H-1"=20'/V-1"=5'	SHEET 29 OF