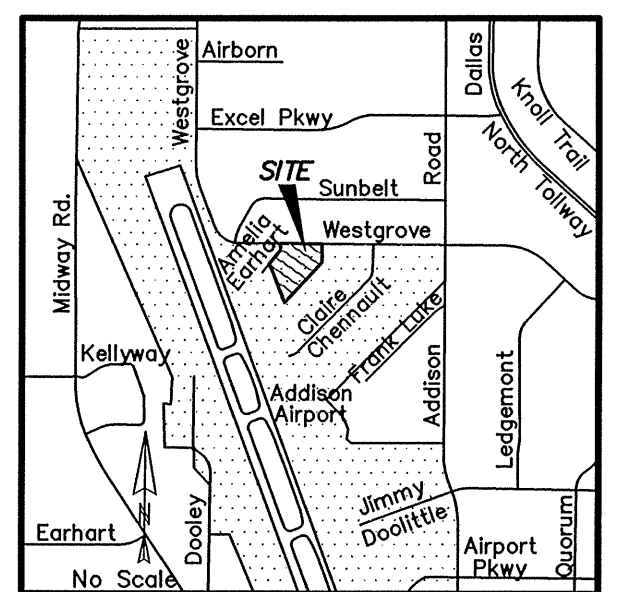


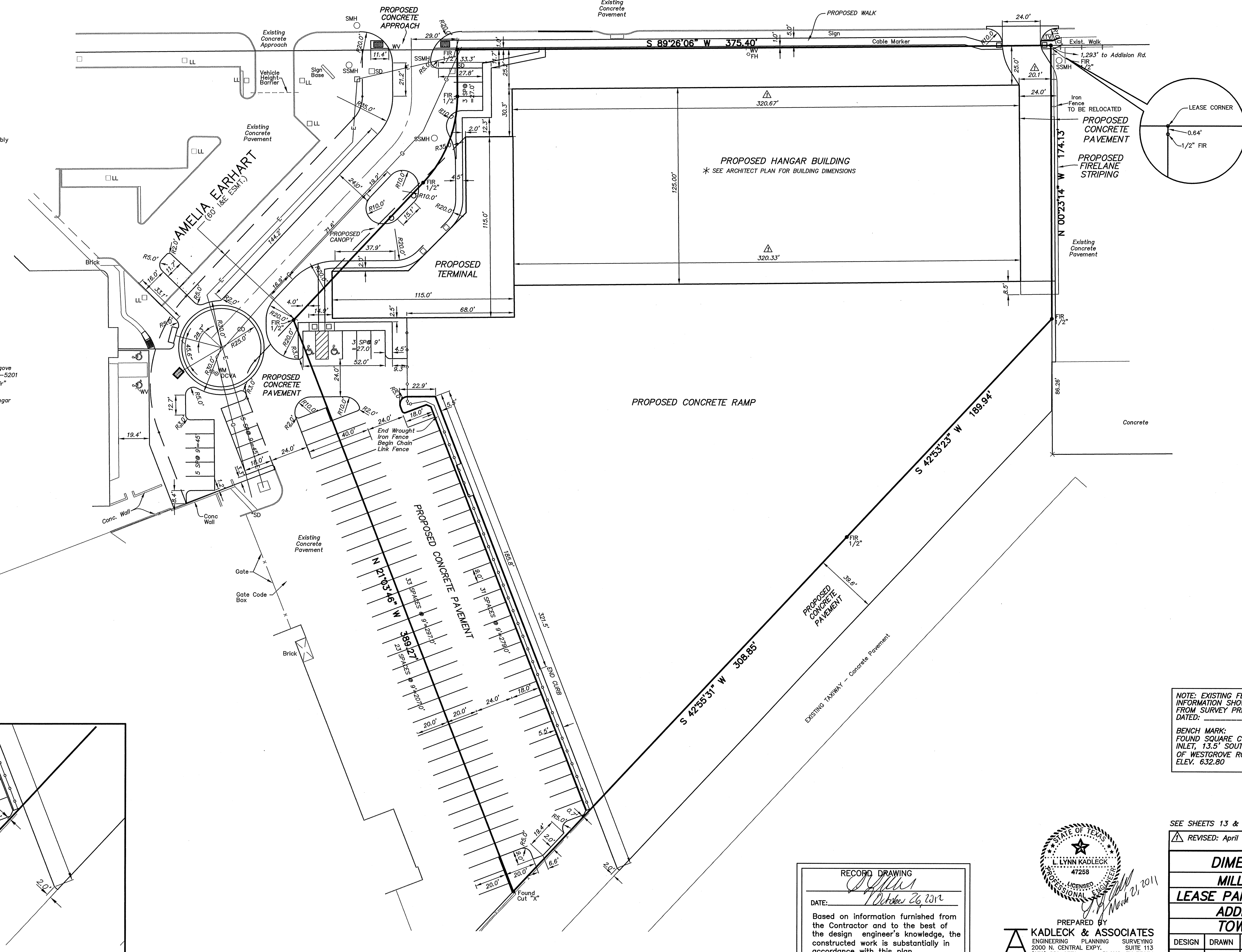
SCALE: 1"=30'

LEGEND

FIR	Found Iron Rod
EB	Electric Box
FH	Fire Hydrant
WM	Water Meter
WV	Water Valve
SS	Sanitary Sewer
MH	Manhole
S	Storm Sewer
SD	Storm Drain
LL	Landscape Light
DCVA	Double Check Valve Assembly
TV	Telephone Vault



WESTGROVE ROAD
(60' R.O.W.)



4300 Westgrove
Lease #070A-5201
"Million-Air"
Existing Hangar

NOTE: EXISTING FEATURES AND TOPOGRAPHIC INFORMATION SHOWN WAS FURNISHED BY OWNER FROM SURVEY PREPARED BY: BRAD SPARR DATED:

BENCH MARK:
FOUND SQUARE CUT AT NORTHWEST CORNER OF BOX INLET, 13.5' SOUTH OF INTERSECTION OF SOUTH LINE OF WESTGROVE ROAD & EAST LINE OF AMELIA EARHART, ELEV. 632.80

SEE SHEETS 13 & 14 FOR DETAILS AND NOTES

REVISED: April 15, 2011; Revise hangar building dimensions.

DIMENSION CONTROL PLAN

MILLION AIR – PHASE TWO

LEASE PARCEL No. 70-WESTGROVE RD.

ADDISON MUNICIPAL AIRPORT

TOWN OF ADDISON, TEXAS

DESIGN	DRAWN	DATE	SCALE	PROJECT No. 10544
K&A	K&A	SEPT.2010	1"=30'	

3
14

RECORD DRAWING
[Signature]
DATE: October 26, 2012

Based on information furnished from the Contractor and to the best of the design engineer's knowledge, the constructed work is substantially in accordance with this plan.

STATE OF TEXAS

L. LYNN KADLECK
47258
LICENSED PROFESSIONAL ENGINEER

PREPARED BY
KADLECK & ASSOCIATES
ENGINEERING PLANNING SURVEYING
2000 N. CENTRAL EXPY. SUITE 113
(972) 881-0771 PLANO, TX 75074
TBPE Reg. No. F-6460 TBPLS Reg. No. 100555-00

March 21, 2011

