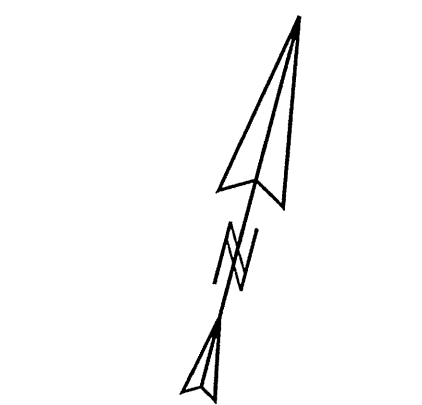


VICINITY MAP
NTS



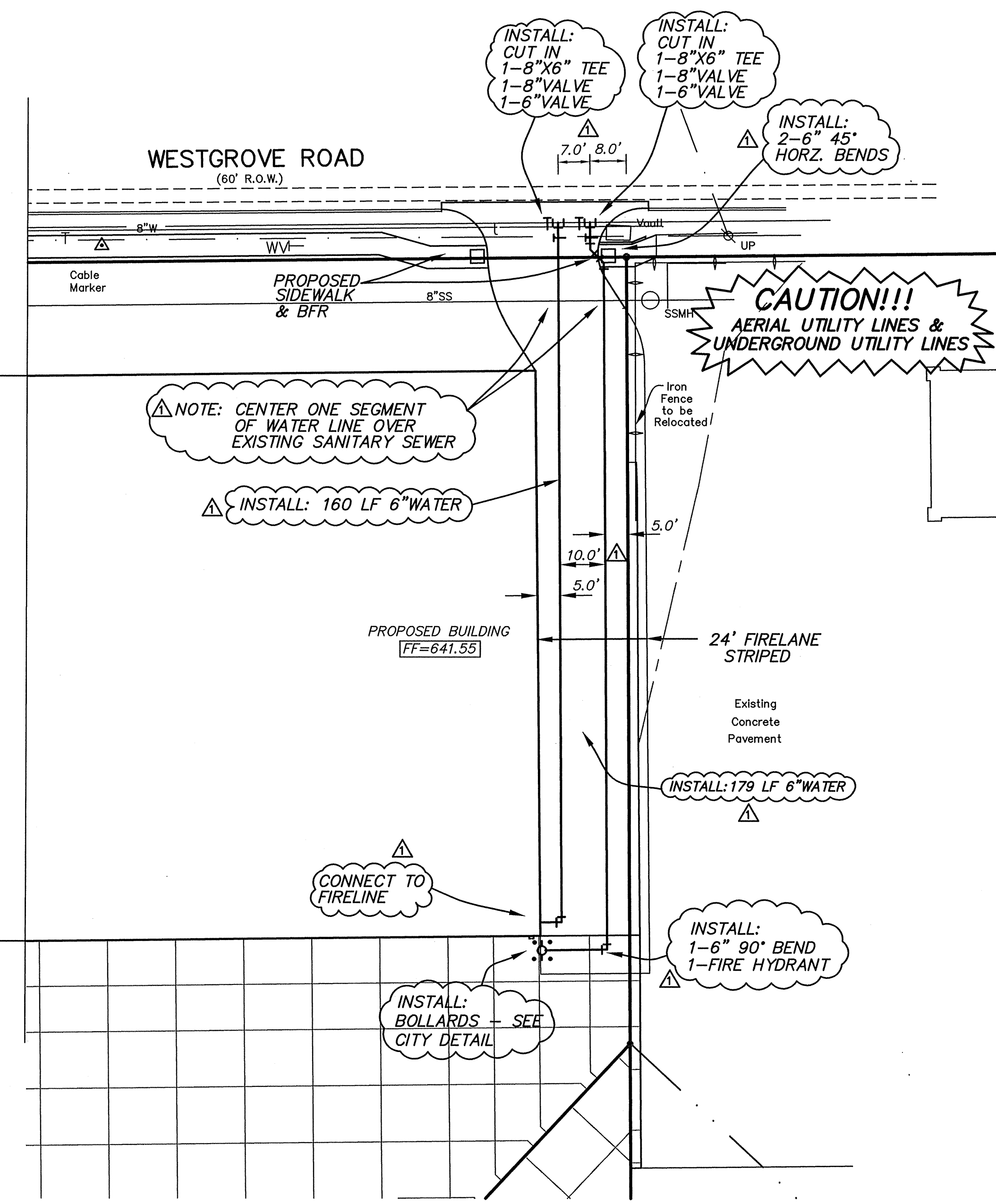
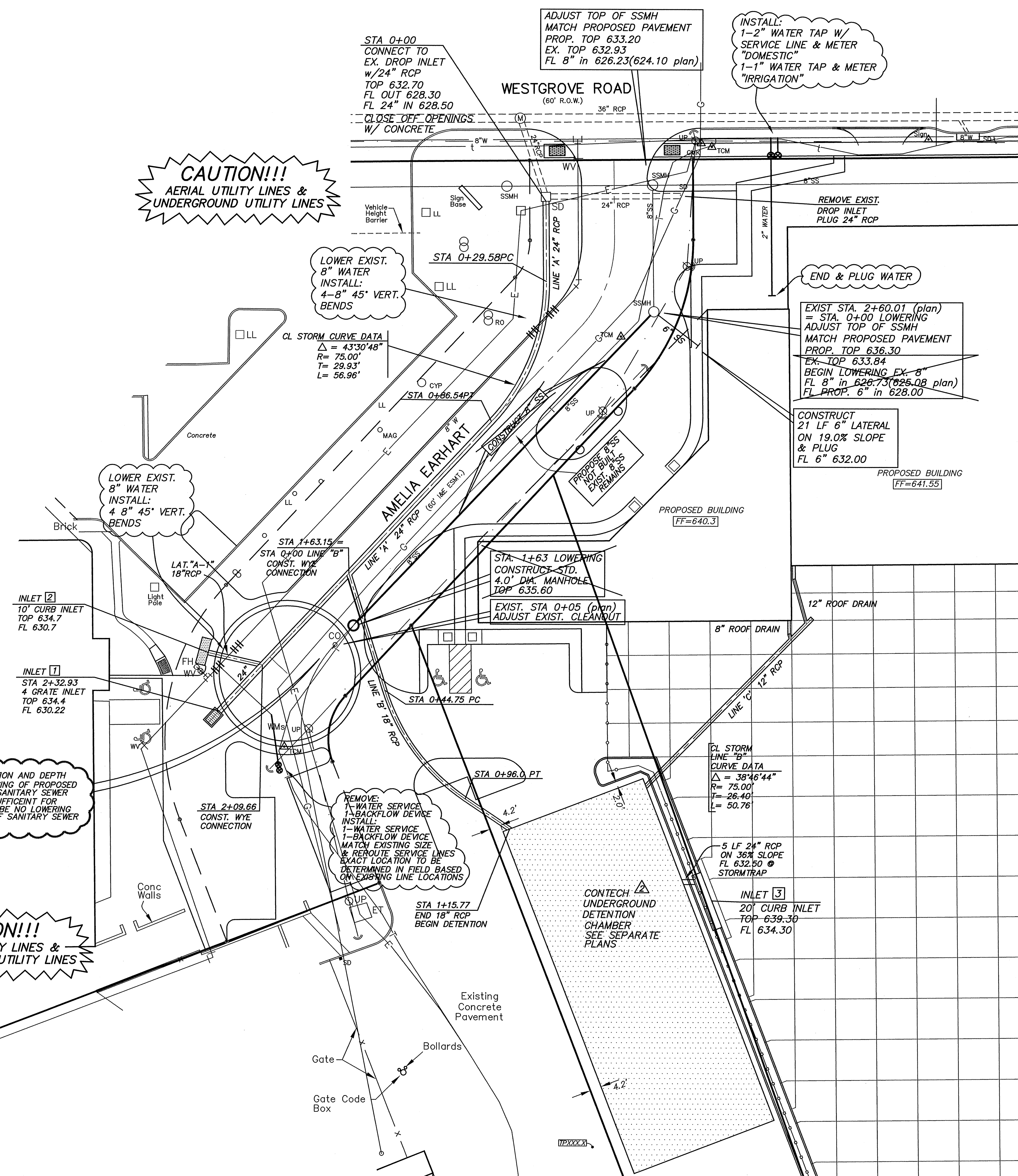
LEGEND

- FIR Found Iron Rod
- SIR Set Iron Rod
- UP Utility Pole
- LP Light Pole
- A Anchor
- FH Fire Hydrant
- WM Water Meter
- WV Water Valve
- WWS Wastewater
- SS Sanitary Sewer
- MH Manhole
- CO Cleanout
- SMH Storm Manhole
- SD Storm Drain
- RCP Reinf. Concrete Pipe
- EM Electric Meter
- ET Electric Transformer
- GM Gas Meter
- FL Flow Line
- THR Throat
- LL Landscape Light
- TCM Telephone Cable Marker
- Telephone Gas Marker
- GMK Gas Meter
- GM Gas Meter
- FL Flow Line
- THR Throat
- MAG Magnolia Cypress
- CYP Cypress
- RO Red Oak

Aluminum Hangar
4300 Westgrove
Lease #070A-5201

NOTE: CONTRACTOR TO VERIFY LOCATION AND DEPTH OF SANITARY SEWER AT CROSSING OF PROPOSED STORM SEWER PRIOR TO ANY SANITARY SEWER LINE LOWERING. IF DEPTH IS SUFFICIENT FOR CLEARANCE, THEN THERE WILL BE NO LOWERING AND CONCRETE ENCASUREMENT OF SANITARY SEWER WILL BE REQUIRED.

CAUTION!!!
AERIAL UTILITY LINES &
UNDERGROUND UTILITY LINES



RECORD DRAWING
DATE: *October 26, 2012*

Based on information furnished from the Contractor and to the best of the design engineer's knowledge, the constructed work is substantially in accordance with this plan.

NOTE: EXISTING FEATURES AND TOPOGRAPHIC INFORMATION SHOWN WAS FURNISHED BY OWNER FROM SURVEY PREPARED BY: BRAD SPARR DATED: _____

BENCH MARK:
FOUND SQUARE CUT AT NORTHWEST CORNER OF BOX INLET, 13.5' SOUTH OF INTERSECTION OF SOUTH LINE OF WESTGROVE ROAD & EAST LINE OF AMELIA EARHART, ELEV. 632.80

SEE TOWN OF ADDISON CONSTRUCTION DETAILS
SEE SHEET 9 FOR STORM SEWER PROFILES
SEE SHEET 10 FOR SANITARY SEWER LOWERING PROFILE
SEE SHEETS 13 & 14 FOR DETAILS AND NOTES

REVISED: Sept. 12, 2011; Change Detention Facility.
REVISED: August 5, 2011; Move Fireline and Waterline to Fire Hydrant, delete a Fire Hydrant, move valve, move bends and add Note.

UTILITY & STORM SEWER PLAN
MILLION AIR - PHASE TWO
LEASE PARCEL No. 70-WESTGROVE RD.
ADDISON MUNICIPAL AIRPORT
TOWN OF ADDISON, TEXAS

DESIGN	DRAWN	DATE	SCALE
K&A	K&A	SEPT.2010	1"=20'

PREPARED BY
KADLECK & ASSOCIATES
ENGINEERING PLANNING SURVEYING
2000 N. CENTRAL EXPY. SUITE 113
(972) 881-0771 PLANO, TX 75074
TBPE Reg. No. F-6460 TBPLS Reg. No. 100555-00

L. LYNN KADLECK
47258
PROFESSIONAL ENGINEER
REGISTERED
March 21, 2011

F:\10541-1-0555\10544 Millon Air - Westgrove\CVL\9-10 UTIL & STORM SEWER.dwg, 10/21/2012 2:38:15 PM