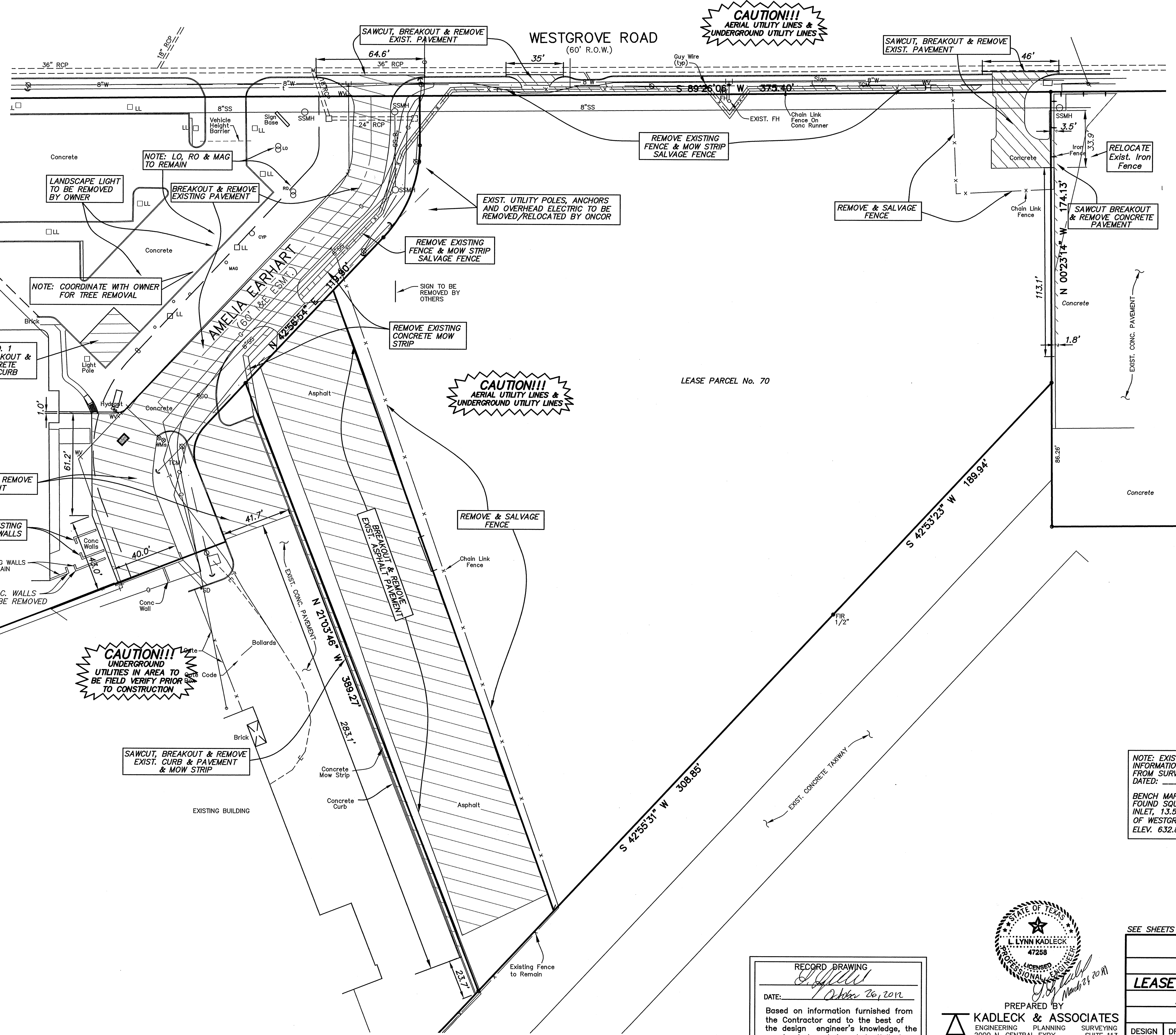
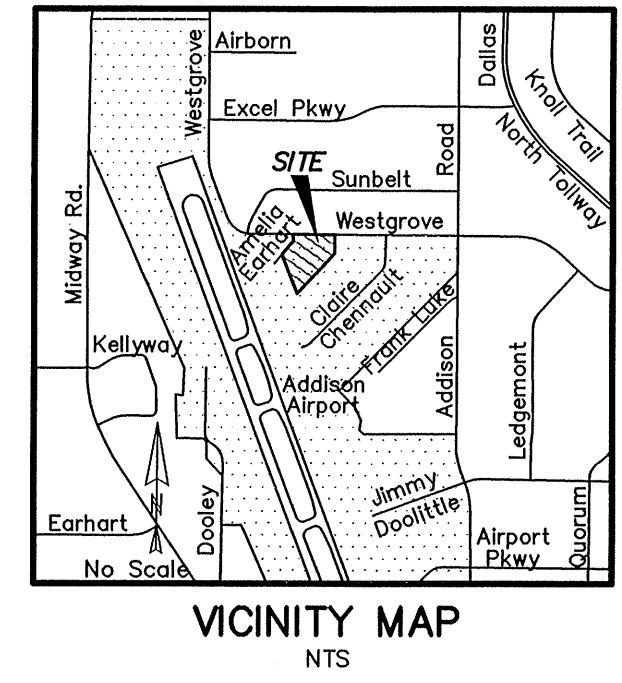


SCALE: 1"=30'

- LEGEND**
- FIR Found Iron Rod
 - EB Electric Box
 - PM Parking Meter
 - TSL Traffic Signal Light
 - LP Light Pole
 - FH Fire Hydrant
 - WM Water Meter
 - MW Monitoring Well
 - TV Telephone Vault
 - SD Storm Drain
 - CM Controlling Monument



CAUTION!!!
AERIAL UTILITY LINES &
UNDERGROUND UTILITY LINES

CAUTION!!!
AERIAL UTILITY LINES &
UNDERGROUND UTILITY LINES

CAUTION!!!
UNDERGROUND
UTILITIES IN AREA TO
BE FIELD VERIFY PRIOR
TO CONSTRUCTION

NOTE: EXISTING FEATURES AND TOPOGRAPHIC INFORMATION SHOWN WAS FURNISHED BY OWNER FROM SURVEY PREPARED BY: BRAD SPARR DATED: _____

BENCH MARK: FOUND SQUARE CUT AT NORTHWEST CORNER OF BOX INLET, 13.5' SOUTH OF INTERSECTION OF SOUTH LINE OF WESTGROVE ROAD & EAST LINE OF AMELIA EARHART. ELEV. 632.80

2
14

RECORD DRAWING
DATE: *October 26, 2010*
Based on information furnished from the Contractor and to the best of the design engineer's knowledge, the constructed work is substantially in accordance with this plan.

PREPARED BY
KADLECK & ASSOCIATES
ENGINEERING PLANNING SURVEYING
2000 N. CENTRAL EXPY. SUITE 113
(972) 881-0771 PLANO, TX 75074
TBPE Reg. No. F-6460 TBPLS Reg. No. 100555-00

SEE SHEETS 13 & 14 FOR DETAILS AND NOTES

DEMOLITION PLAN				
MILLION AIR - PHASE TWO				
LEASE PARCEL No. 70-WESTGROVE RD.				
ADDISON MUNICIPAL AIRPORT				
TOWN OF ADDISON, TEXAS				
DESIGN	DRAWN	DATE	SCALE	
K&A	K&A	SEPT.2010	1"=30'	PROJECT No. 10544

F:\10544-10555\10544_Million Air - Westgrove\DWG\DEMOLITION PLAN.dwg, 10/21/2010 12:42:17 PM