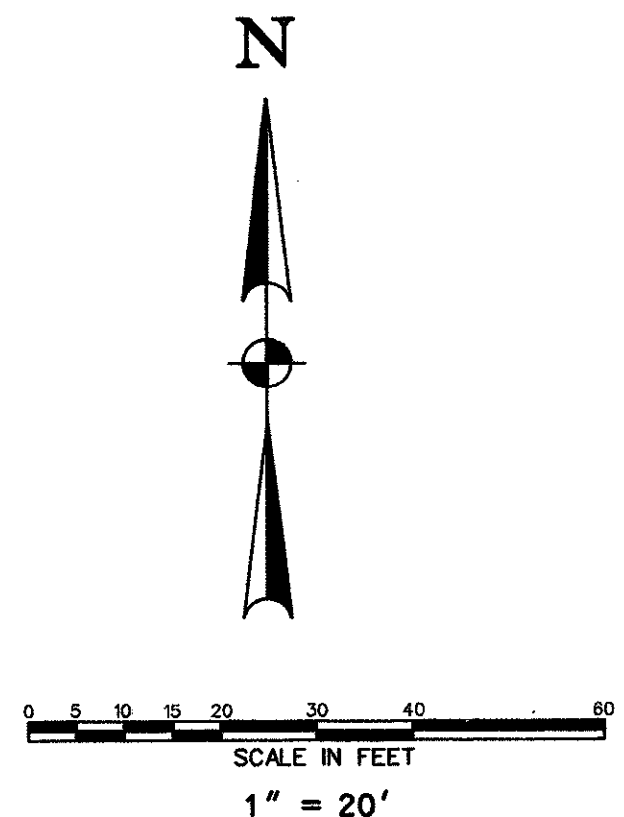
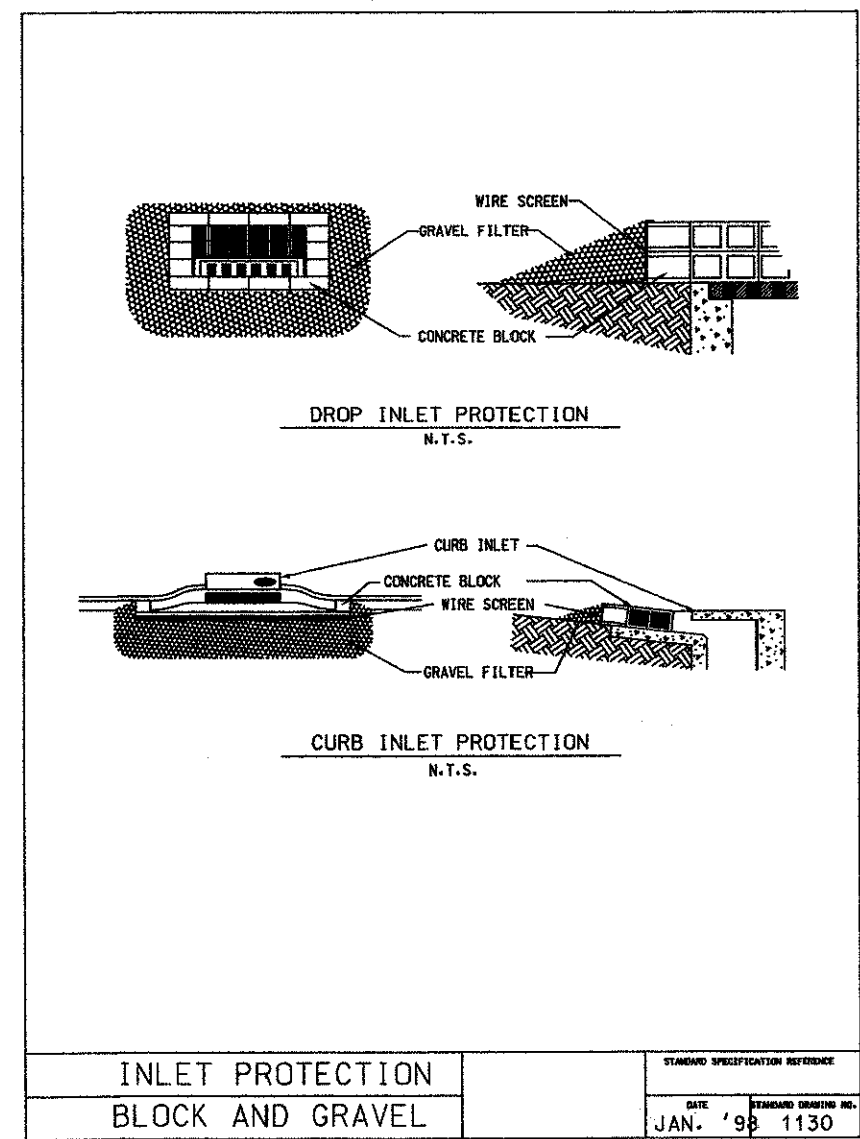


GENERAL NOTES:

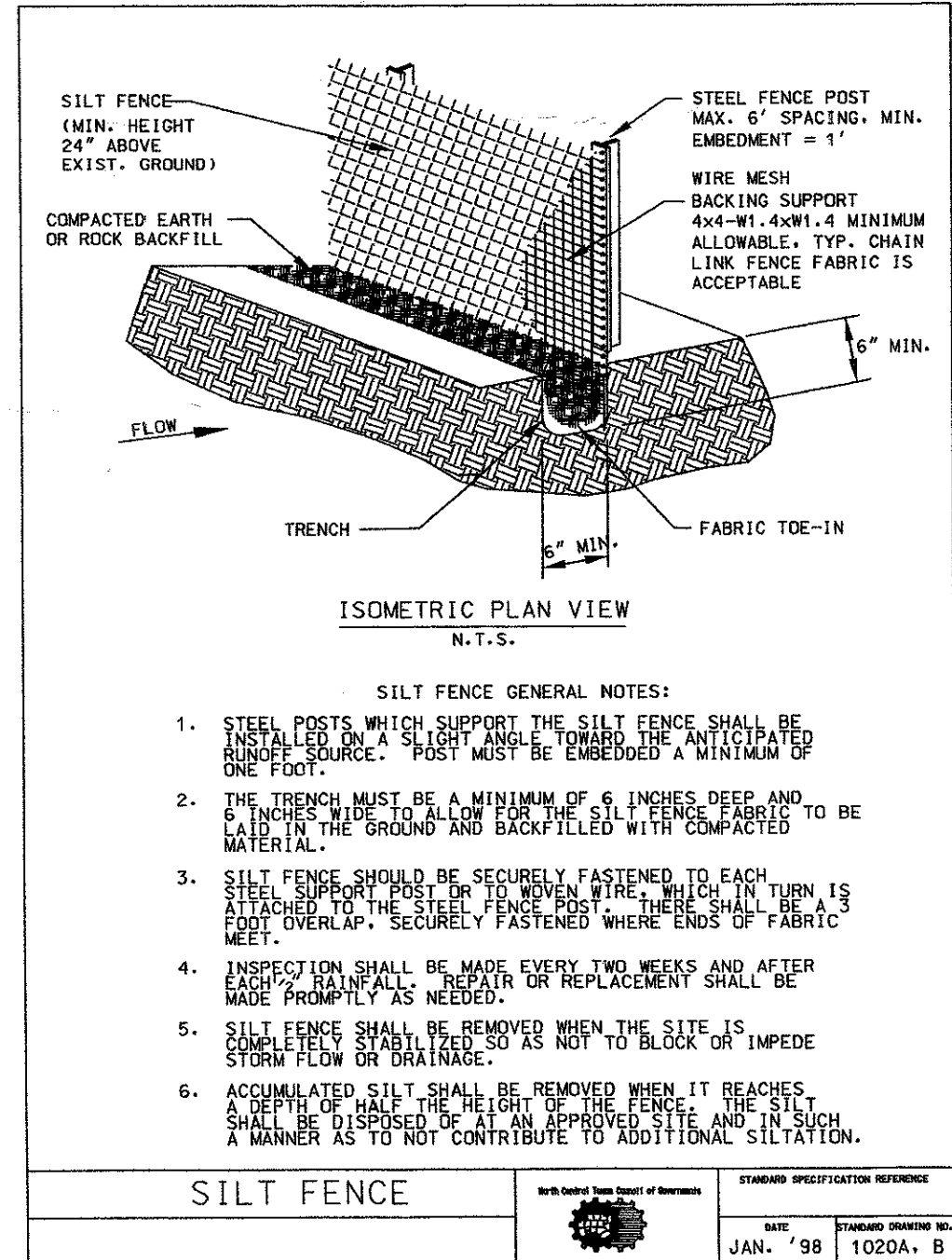
1. EROSION CONTROL DEVICES AS SHOWN ON THE EROSION CONTROL PLAN FOR THE PROJECT SHALL BE INSTALLED PRIOR TO THE START OF LAND DISTURBING ACTIVITIES ON THE PROJECT.
2. ALL EROSION CONTROL DEVICES ARE TO BE INSTALLED IN ACCORDANCE WITH THE APPROVED PLANS AND SPECIFICATIONS FOR THE PROJECT. CHANGES ARE TO BE APPROVED BEFORE CONSTRUCTION BY THE DESIGN ENGINEER AND THE CITY OF ADDISON ENGINEERING DIVISION.
3. IF THE EROSION CONTROL PLAN AS APPROVED CANNOT CONTROL EROSION AND OFF-SITE SEDIMENTATION FROM THE PROJECT THE EROSION CONTROL PLAN WILL BE REQUIRED TO BE REVISED AND/OR ADDITIONAL EROSION CONTROL DEVICES WILL BE REQUIRED ON SITE.
4. IF OFF-SITE SOIL BORROW OR SPOIL SITES ARE USED IN CONJUNCTION WITH THIS PROJECT, THIS INFORMATION SHALL BE DISCLOSED AND SHOWN ON THE EROSION CONTROL PLAN. OFF-SITE BORROW AND SPOIL AREAS ARE CONSIDERED A PART OF THE PROJECT SITE AND THEREFORE SHALL COMPLY WITH THE CITY OF ADDISON EROSION CONTROL REQUIREMENTS. THESE AREAS SHALL BE STABILIZED WITH PERMANENT GROUND COVER PRIOR TO FINAL APPROVAL OF THE PROJECT.
5. TOTAL PROJECT AREA = 1.67 ACRES
DISTURBED AREA = 1.29 ACRES
UNDISTURBED AREA = 0.38 ACRES
6. SEE SHEET C1 FOR PROPOSED UTILITIES
7. SEE SHEET C2 FOR DRAINAGE CALCULATIONS AND GRADING IMPROVEMENTS
8. SEE CITY OF ADDISON EROSION AND SEDIMENT CONTROL MANUAL FOR LATEST BMP DEVICE STANDARDS AND SPECIFICATIONS.



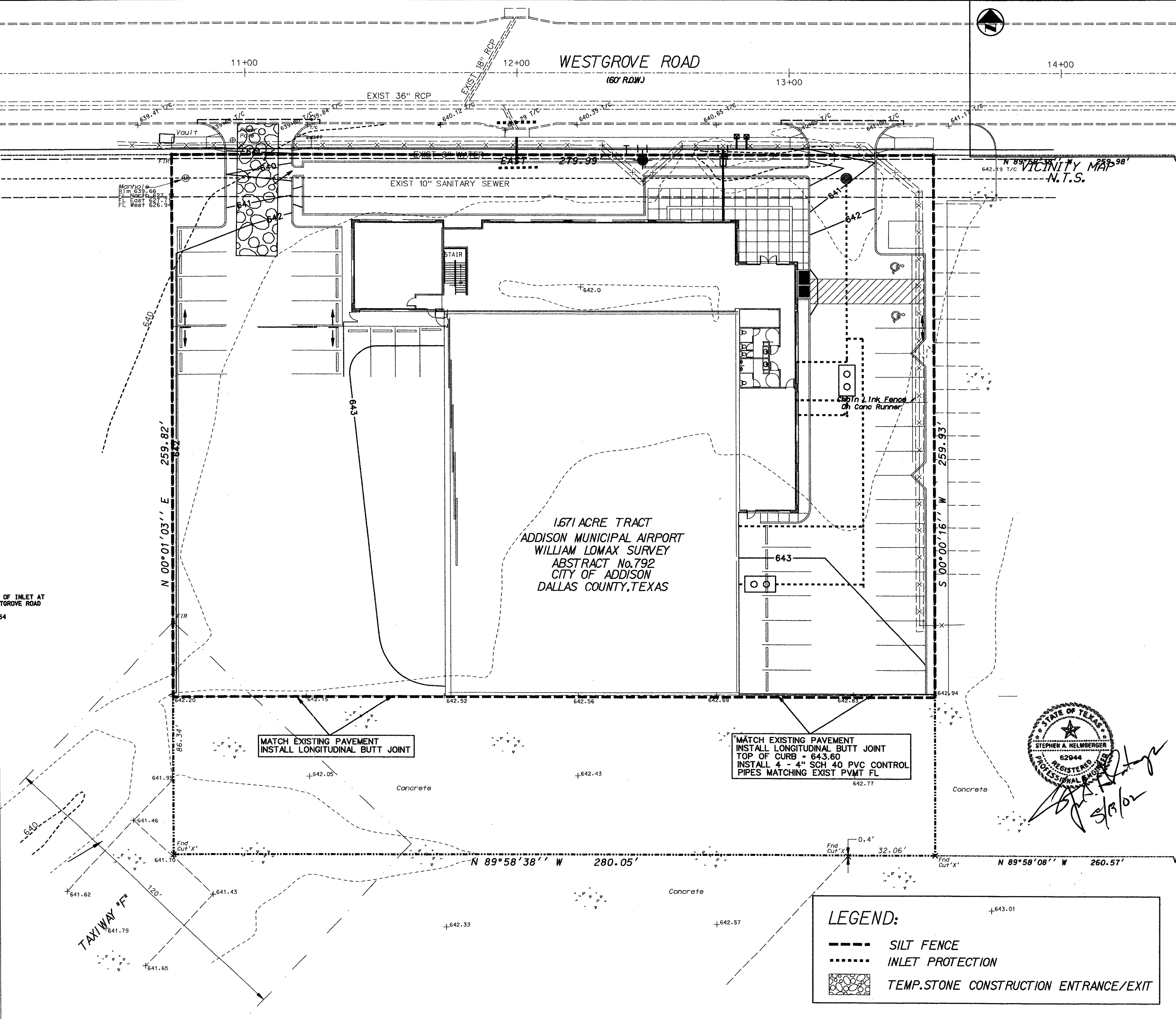
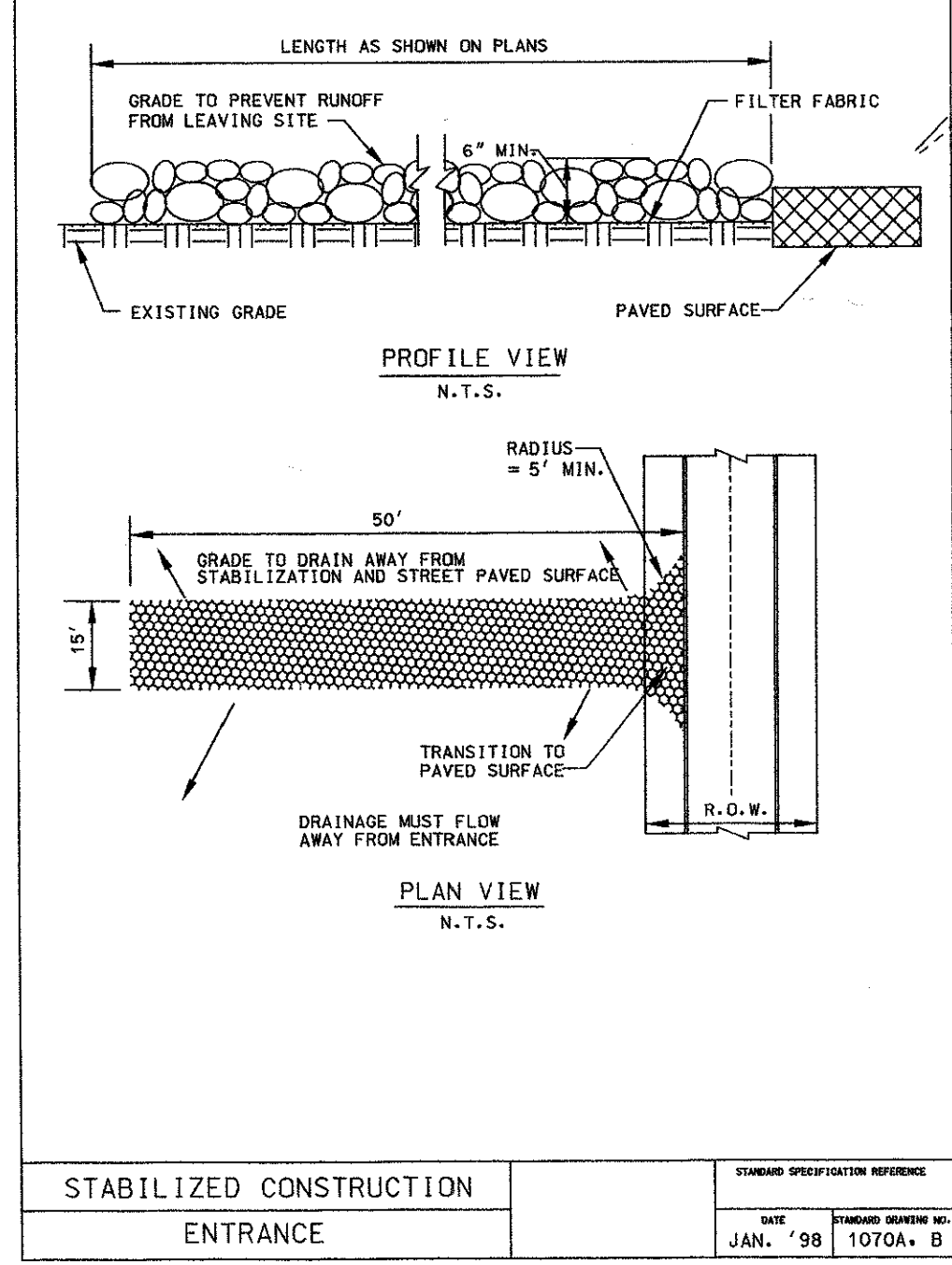
BMP MAINTENANCE SCHEDULE		
BMP	MAINTENANCE FREQUENCY	BY:
SILT FENCE	WEEKLY/AFTER RAINS	CONTRACTOR
CONST ENTRANCE	WEEKLY/AFTER RAINS	CONTRACTOR
INLET PROTECTION	WEEKLY/AFTER RAINS	CONTRACTOR



BENCH MARK:
FOUND SQUARE CUT ON TOP OF INLET AT NORTHWEST CORNER OF WESTGROVE ROAD AND SUNBELT. ELEV. 628.54



- SILT FENCE GENERAL NOTES:**
1. STEEL POSTS WHICH SUPPORT THE SILT FENCE SHALL BE INSTALLED ON A SLOPE ANGLE TOWARD THE ANTICIPATED RUNOFF SOURCE. POST MUST BE EMBEDDED A MINIMUM OF ONE FOOT.
 2. THE TRENCH MUST BE A MINIMUM OF 6 INCHES DEEP AND 12 INCHES WIDE TO ALLOW FOR THE TRENCH TO BE FILL IN THE GROUND AND BACK FILLED WITH COMPACTED MATERIAL.
 3. SILT FENCE POSTS OR TOE MUST BE SECURELY FASTENED TO EACH OTHER TO PREVENT THE TRENCH FROM COLLAPSE. SILT FENCE POSTS SHOULD BE SECURELY FASTENED TO EACH OTHER TO PREVENT THE TRENCH FROM COLLAPSE.
 4. INSPECTION SHALL BE MADE EVERY TWO WEEKS AND AFTER EACH RAINFALL. REPAIRS OR REPLACEMENT SHALL BE MADE PROMPTLY AS NEEDED.
 5. SILT FENCE SHALL BE REMOVED WHEN THE SITE IS PREPARED FOR CONSTRUCTION AS NOT TO BLOCK OR IMPEDE STORM FLOW OR DRAINAGE.
 6. ACCUMULATED SILT SHALL BE REMOVED WHEN IT REACHES A DEPTH OF 6 INCHES. THE SILT SHALL BE DISPOSED OF AT AN APPROVED SITE AND IN SUCH A MANNER AS TO NOT CONTRIBUTE TO POLLUTION.



REV.	BY:	REVISION

EROSION CONTROL CONSTRUCTION PLAN		
CONSTRUCTION ENTRANCE	INSTALLATION:	REMOVAL:
CONSTRUCTION ENTRANCE	PRIOR TO STARTING	PRIOR TO PAVEMENT PLACEMENT
SILT FENCE	PRIOR TO STARTING	AFTER ESTABLISHING GRASS COVER
CURB INLET PROTECTION	PRIOR TO STARTING	AFTER ESTABLISHING GRASS COVER

EROSION CONTROL PLAN

LOT 1, BLOCK 1 MISSION COMPANY ADDITION
MISSION COMPANY
4600 CLAIRE CHENNAULT, ADDISON, TEXAS

HELMBERGER ASSOCIATES, INC.
CIVIL AND ENVIRONMENTAL ENGINEERS
124 HOOPER ROAD, WYLE TEXAS 75086 (972) 442-7400

DESIGN	DRAWN	DATE	SCALE	NOTES	FILE	NO.
HELM.	CADD	MAY 2002	1"=20'	ERBORDER	0216	C3

