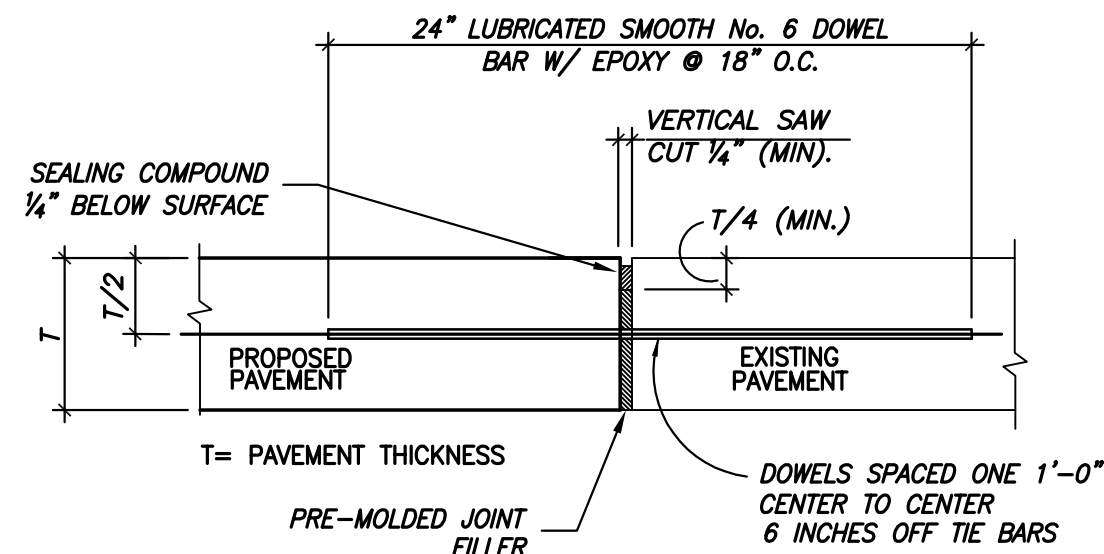


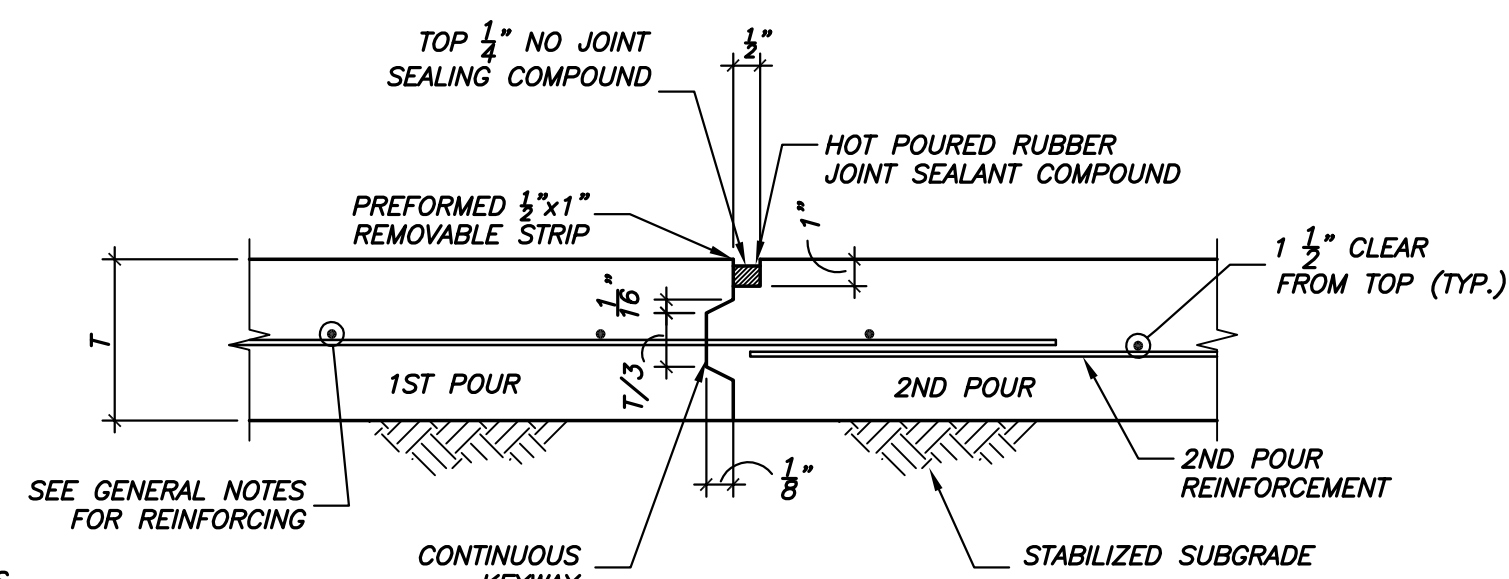
01 TYPICAL PAVING EXPANSION JOINT DETAIL
NOT TO SCALE

EXPANSION JOINT NOTES:
 1. DOWELS AND REINFORCING BARS SHALL BE SUPPORTED BY AN APPROVED DEVICE.
 2. EXPANSION JOINTS SHALL BE SPACED AT 90' ON CENTER MAXIMUM.
 3. DO NOT CROSS EXPANSION JOINT WITH BONDED REINFORCEMENT.

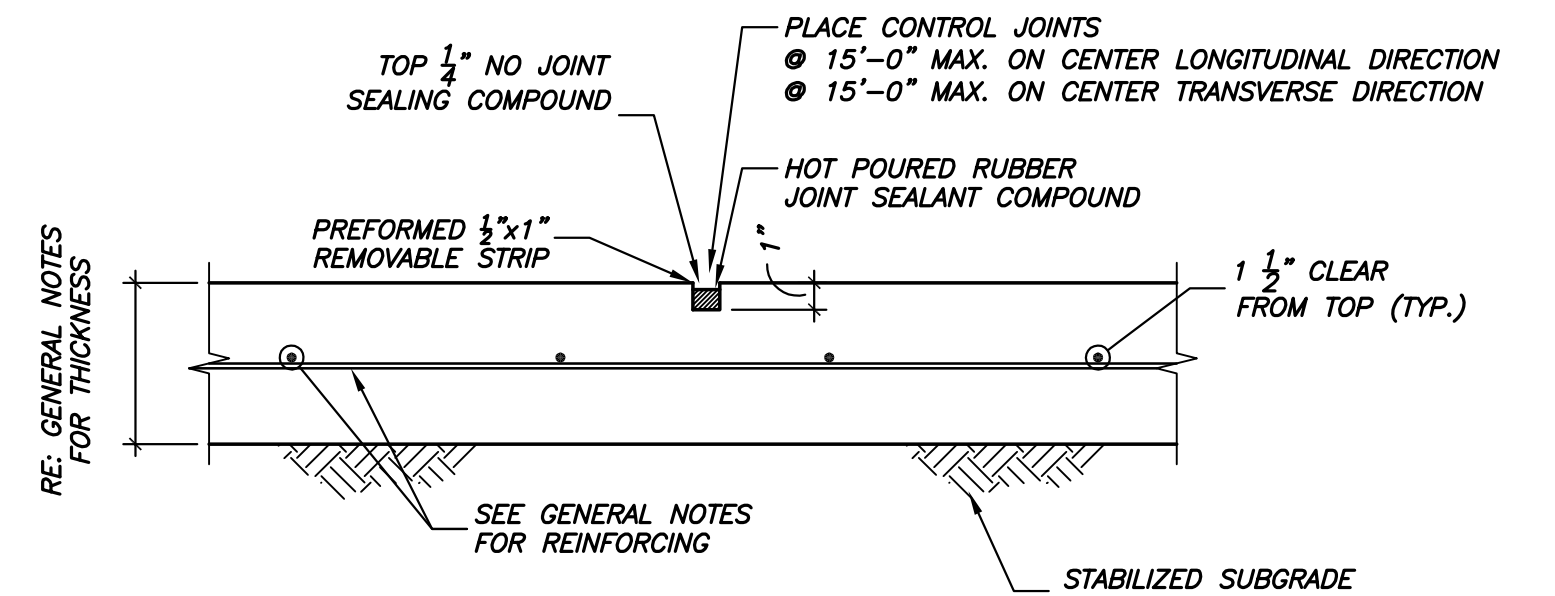


02 LONGITUDINAL BUTT JOINT AT EXISTING PAVEMENT DETAIL
NOT TO SCALE

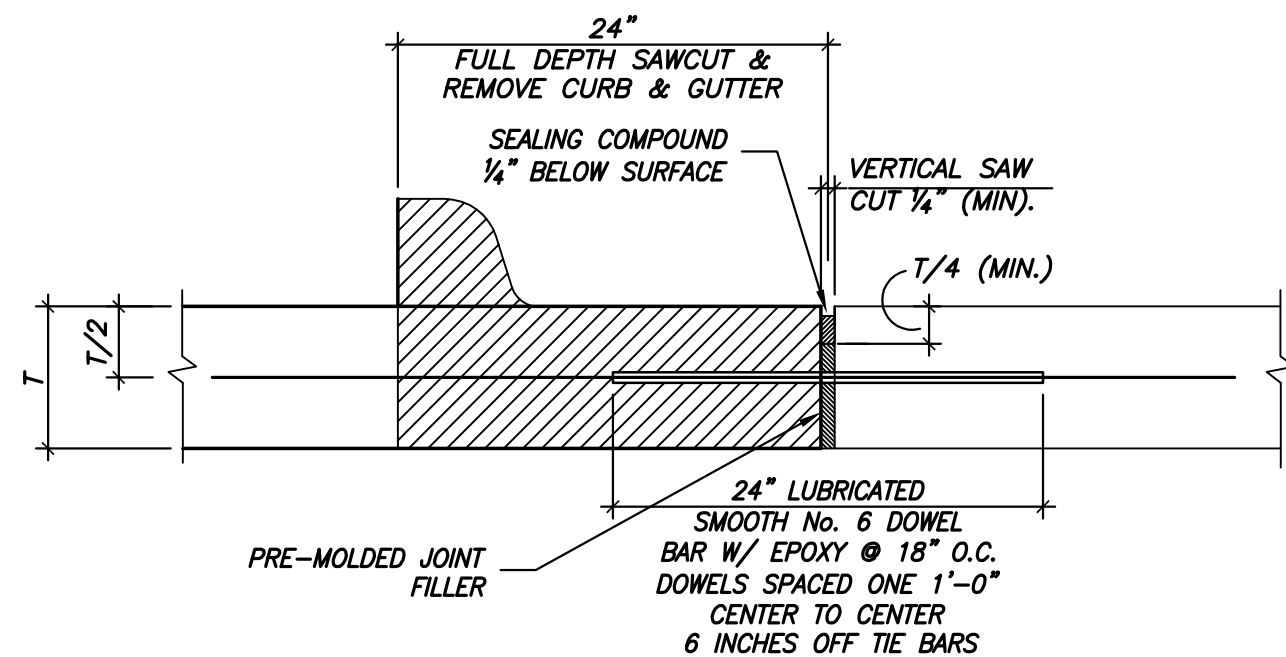
NOTES:
 1. NO.5 SMOOTH DOWEL BAR MAY BE USED IN LIEU OF NO. 6 BAR IN 5 INCH AND 6 INCH PAVEMENT THICKNESS.
 2. LONGITUDINAL BUTT CONSTRUCTION MAY BE UTILIZED IN PLACE OF LONGITUDINAL HINGED (KEYWAY) JOINT AT CONTRACTORS OPTION.
 3. DOWEL BARS SHALL BE DRILLED INTO PAVEMENT HORIZONTALLY BY USE OF A MECHANICAL RIG. DRILLING BY HAND IS NOT ACCEPTABLE. PUSHING DOWEL BARS INTO GREEN CONCRETE IS NOT ACCEPTABLE.
 4. REFER TO PAVING GENERAL NOTES FOR JOINT SEALING COMPOUND REQUIREMENTS.



03 PAVING CONSTRUCTION JOINT DETAIL
NOT TO SCALE

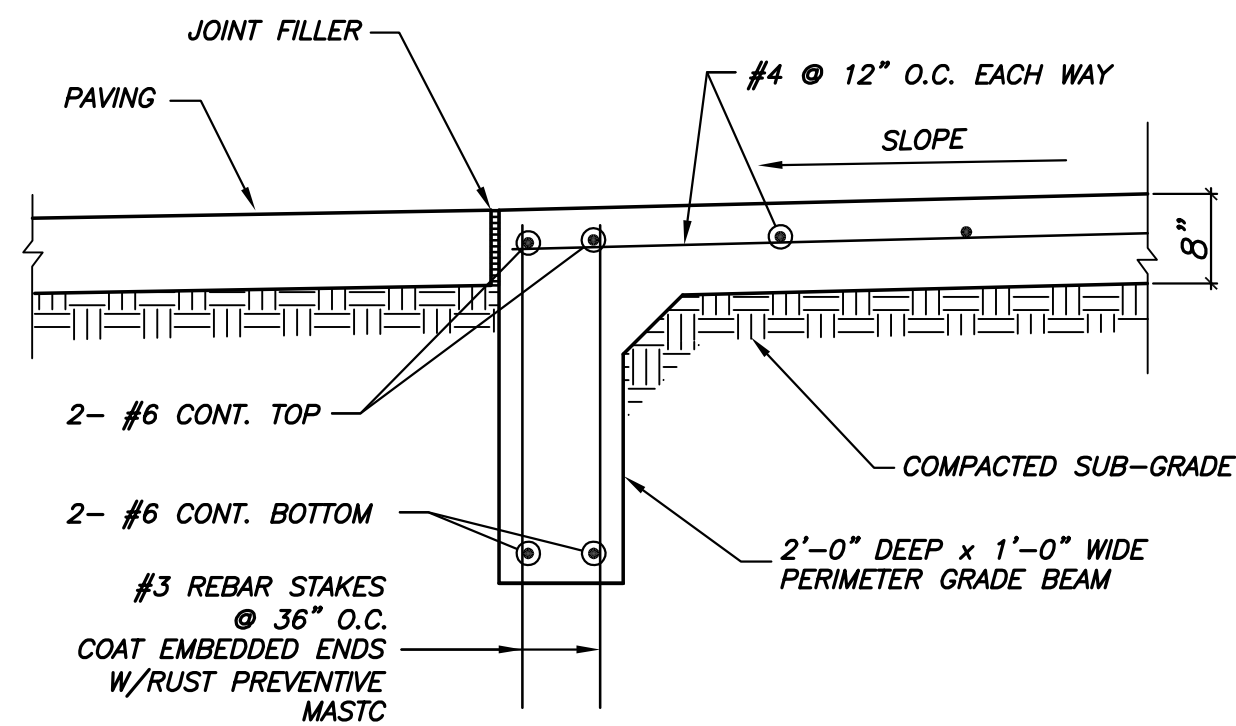


04 CONTROL JOINT DETAIL
NOT TO SCALE



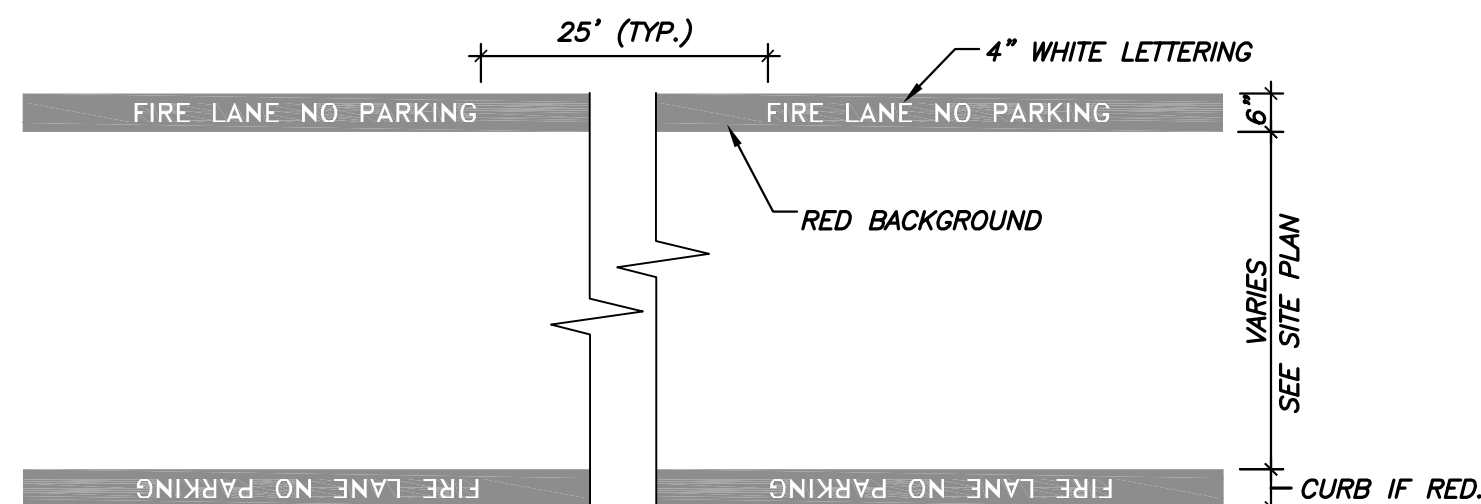
05 LONGITUDINAL BUTT JOINT AT EXISTING CURB DETAIL
NOT TO SCALE

NOTES:
 1. NO.5 SMOOTH DOWEL BAR MAY BE USED IN LIEU OF NO. 6 BAR IN 5 INCH AND 6 INCH PAVEMENT THICKNESS.
 2. LONGITUDINAL BUTT CONSTRUCTION MAY BE UTILIZED IN PLACE OF LONGITUDINAL HINGED (KEYWAY) JOINT AT CONTRACTORS OPTION.
 3. DOWEL BARS SHALL BE DRILLED INTO PAVEMENT HORIZONTALLY BY USE OF A MECHANICAL RIG. DRILLING BY HAND IS NOT ACCEPTABLE. PUSHING DOWEL BARS INTO GREEN CONCRETE IS NOT ACCEPTABLE.
 4. REFER TO PAVING GENERAL NOTES FOR JOINT SEALING COMPOUND REQUIREMENTS.

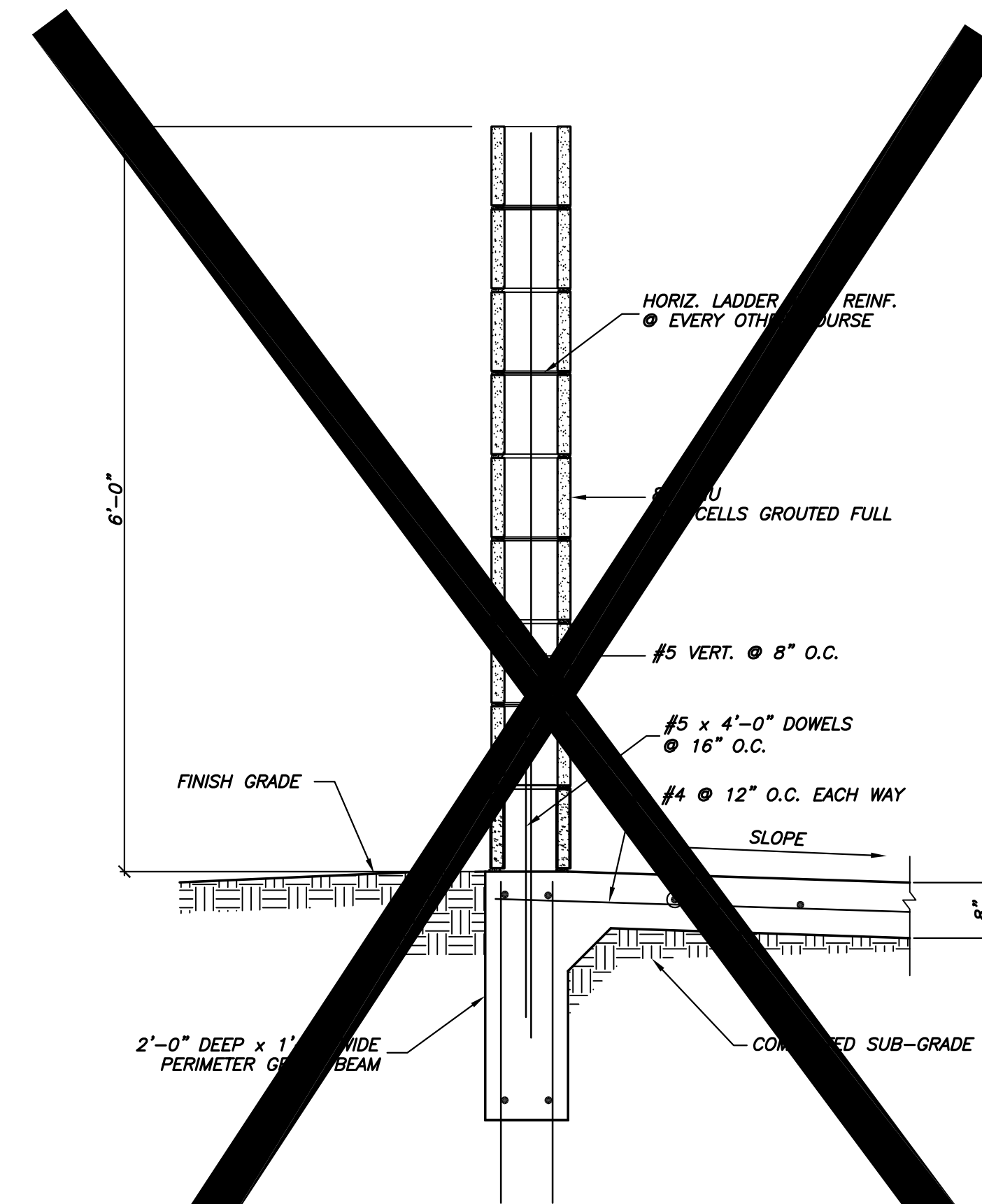


06 TRASH ENCLOSURE FOUNDATION DETAIL
NOT TO SCALE

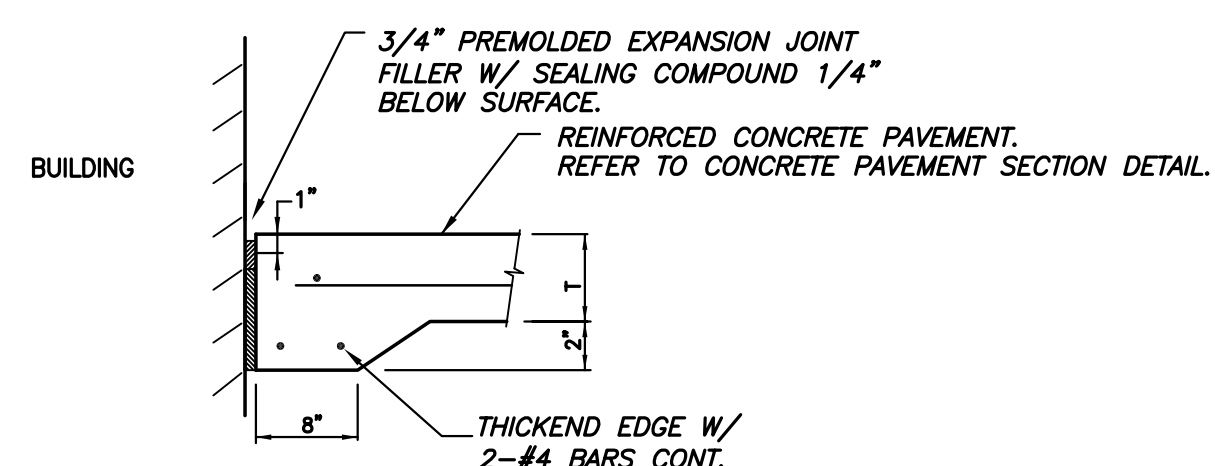
1. STRIPING TO BE DONE IN ACCORDANCE WITH THE LOCAL AUTHORITIES' STANDARDS. THE PAVEMENT MARKINGS SHALL BE FROM THE TOP OF THE SEAM OF THE CURB TO A POINT EVEN WITH THE DRIVING SURFACE.
 2. STRIPE SHALL BE SIX (6) INCHES WIDE PAINTED WITH AN EXTERIOR ACRYLIC LATEX TRAFFIC PAINT. COLOR SHALL BE "TRAFFIC RED". STRIPE MAY BE BRUSHED OR SPRAYED, ONE COAT TO FINISH.
 3. LETTERS SHALL BE FOUR (4) INCHES HIGH PAINTED WITH AN EXTERIOR ACRYLIC LATEX TRAFFIC PAINT. LETTERS TO BE ONE (1) INCH STROKE. COLOR SHALL BE "TRAFFIC WHITE". GLIDDEN NO. 563245 OR EQUAL.



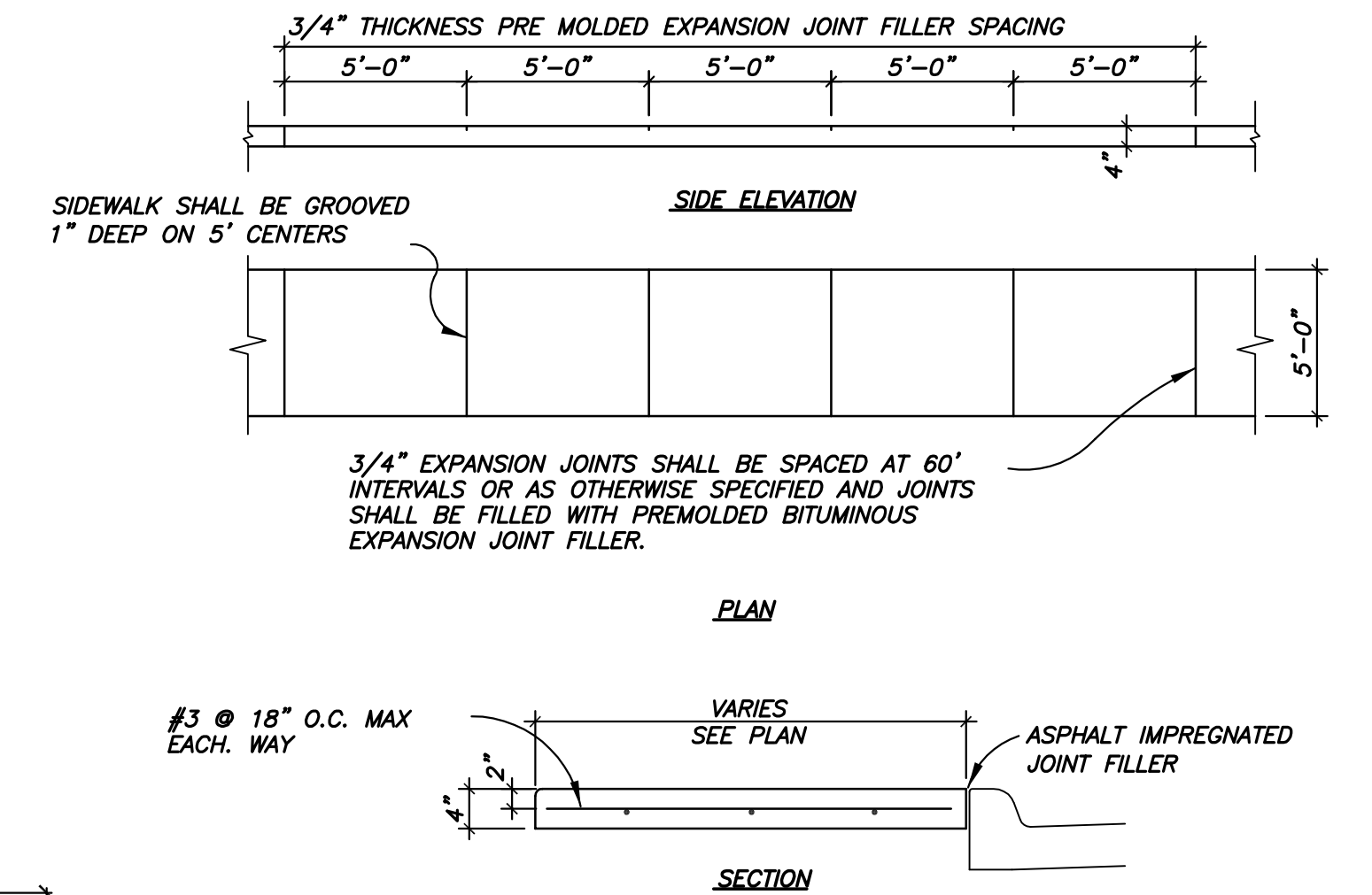
10 FIRE LANE MARKING
NOT TO SCALE



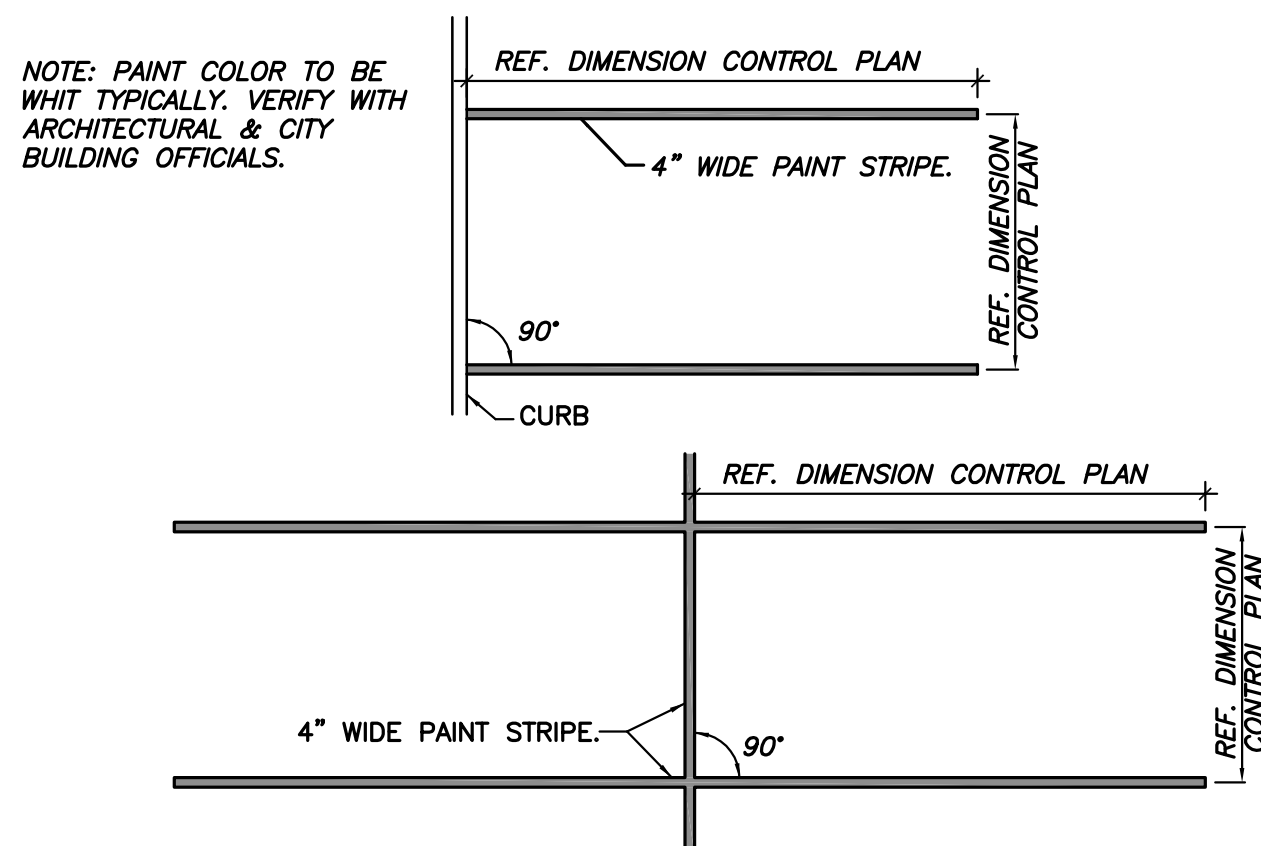
07 TRASH ENCLOSURE WALL DETAIL AS-BUILT
10/25/2018



11 PAVEMENT ISOLATION JOINT AT BUILDING
NOT TO SCALE



08 TYPICAL CONCRETE SIDEWALK DETAIL (PRIVATE)
NOT TO SCALE



09 90° PARKING STALL STRIPING
NOT TO SCALE

THE SEAL APPEARING ON THIS DOCUMENT WAS AUTHORIZED BY VICTOR LISSIAK, JR., P.E. 30565 ON 10/25/2018



TYPICAL PAVING PLAN					
MEHRDAD HANGAR					
ADDISON AIRPORT					
LEASEHOLD ESTATES TRACT II					
1458 ACRES GROUND LEASE #080A-29 ALP#U23					
4700 WESTGROVE DRIVE					
ADDISON, TEXAS					
VIEWTECH INC.			TEXAS FIRM REGISTRATION NO. F2658		
4205 BELTWAY DR. ADDISON, TX. 75001			(972) 661-8187 FAX (972) 661-8172		
DESIGN	DRAWN	DATE	SCALE	JOB #	SHEET
AW	AW	10/24/16	1"=20'	2015-224	C6.1