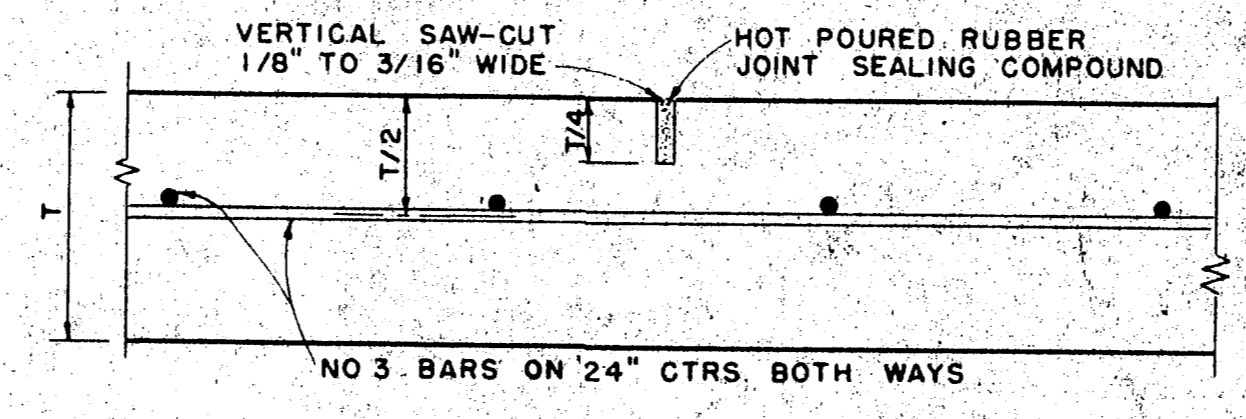
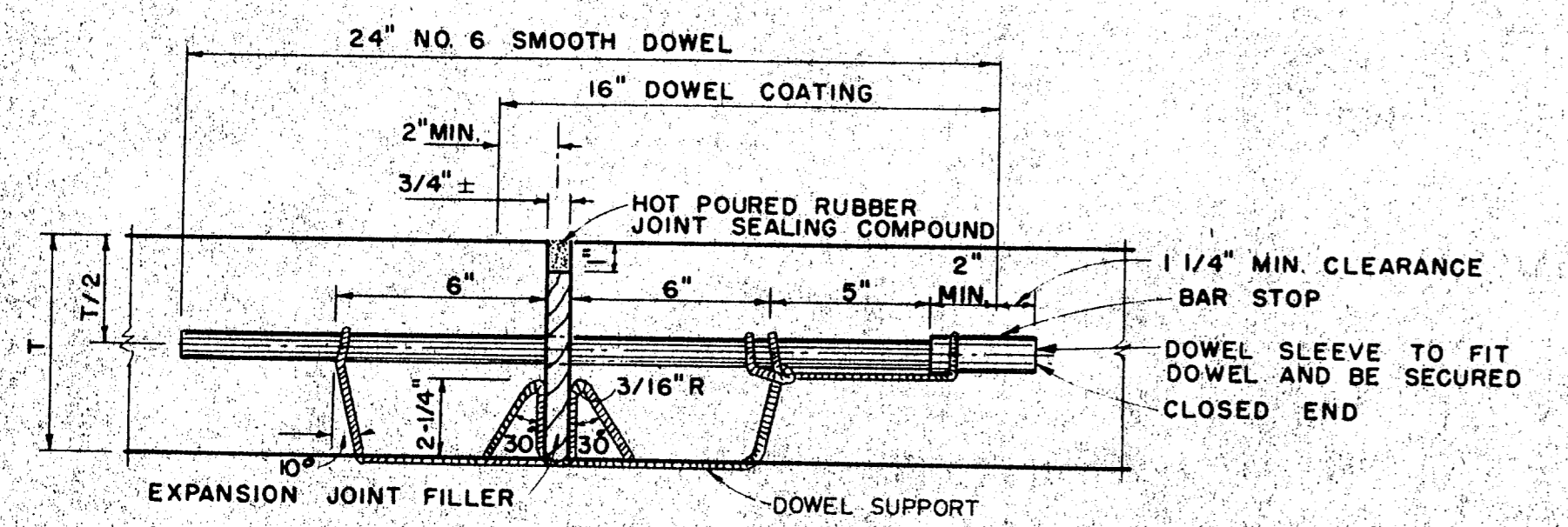


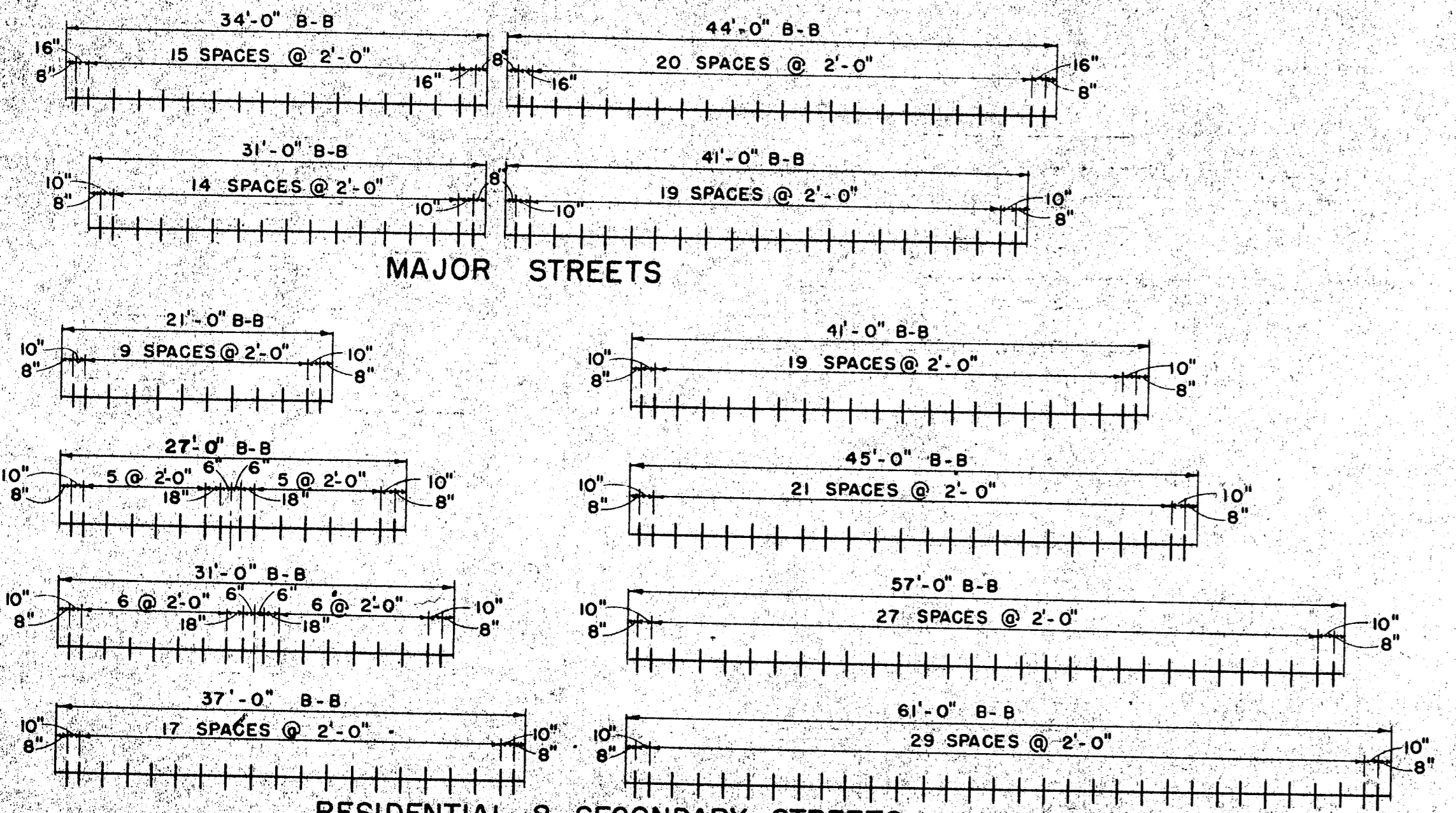
SPACING DIAGRAM FOR JOINTS
IDENTICAL FOR STREETS (CONCRETE PAVEMENT OR BASE) AND ALLEYS EXCEPT THAT EXPANSION JOINTS FOR ALLEYS SHALL BE PLACED AT THE END OF THE RETURN IN LINE WITH THE PROPERTY LINE. SPACING OF EXPANSION JOINTS SHALL NOT EXCEED 600 FEET.



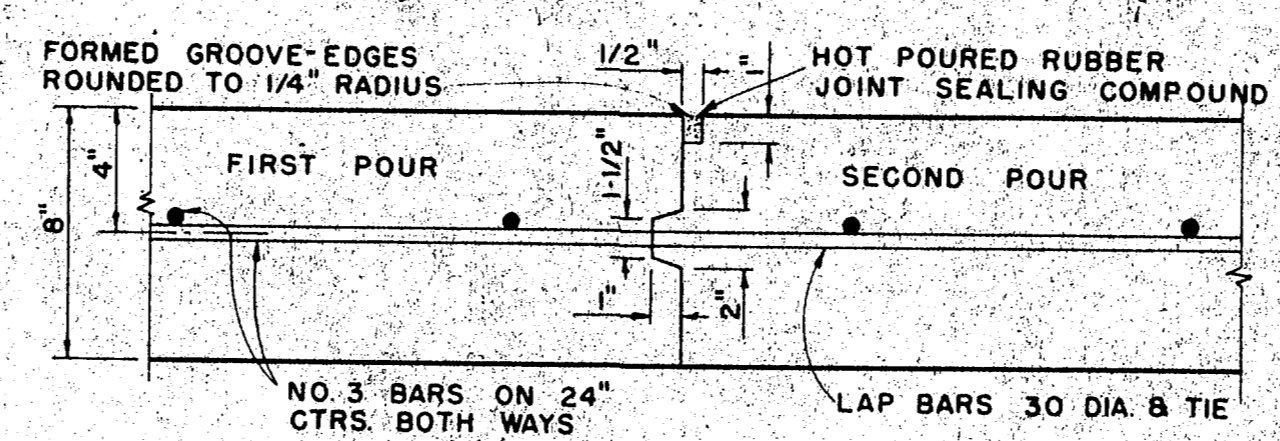
SAWED DUMMY JOINT
IDENTICAL FOR STREETS AND ALLEYS EXCEPT ALLEY LONGITUDINAL REINFORCEMENT BARS



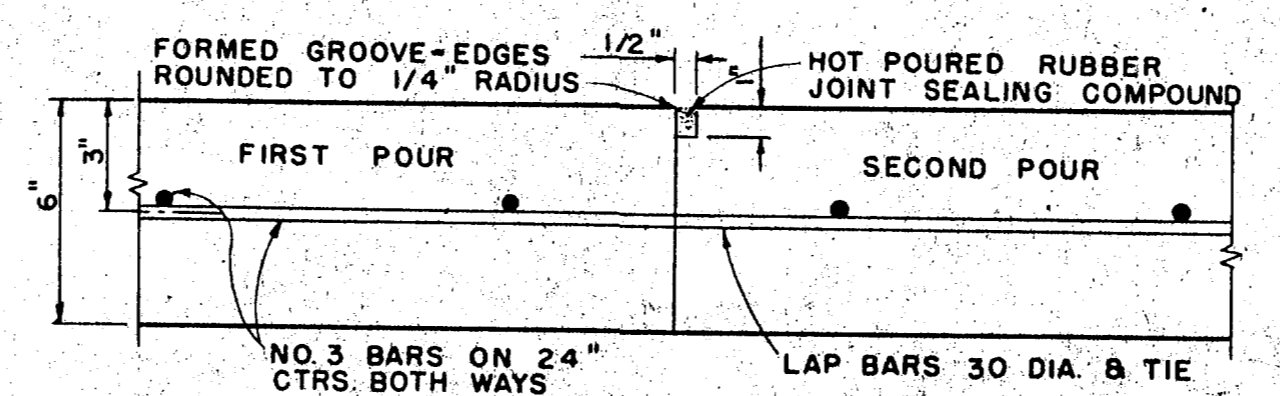
TRANSVERSE EXPANSION JOINT
IDENTICAL FOR STREETS & ALLEYS



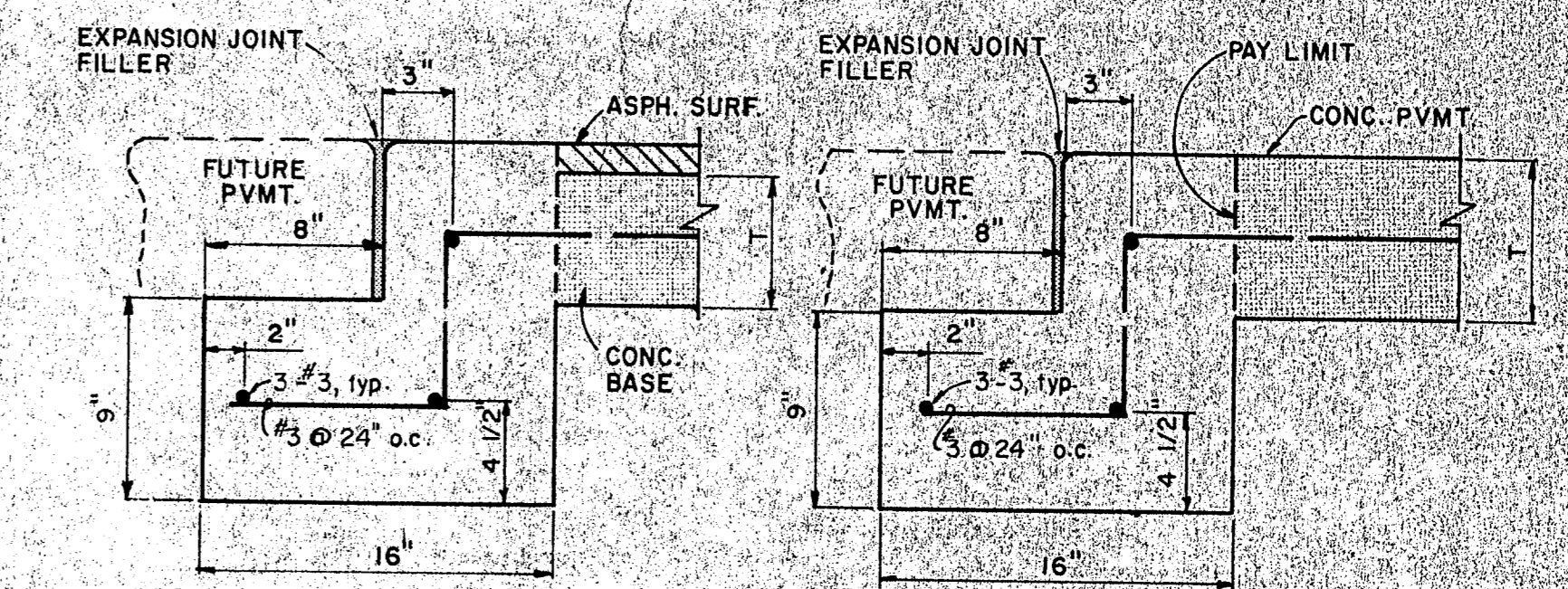
SPACING DIAGRAM FOR DOWELS AT EXPANSION JOINTS



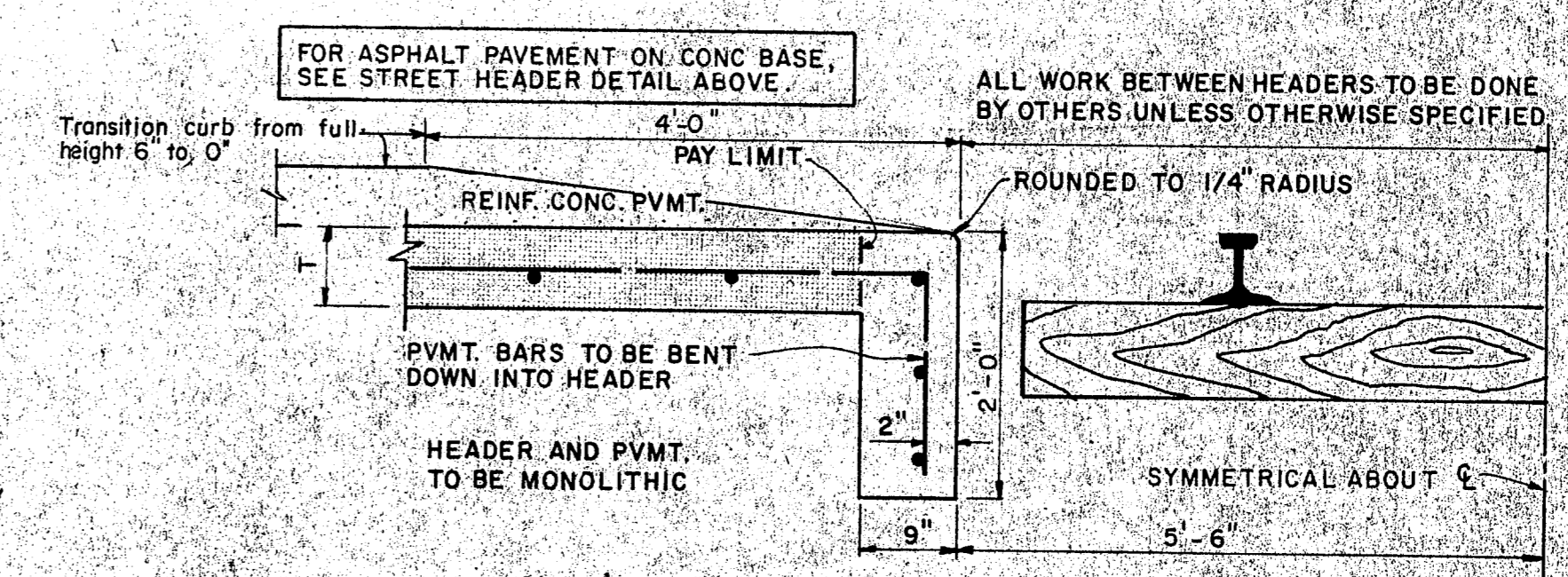
CONSTRUCTION JOINT
FOR 6" THICKNESS PAVEMENT OR BASE



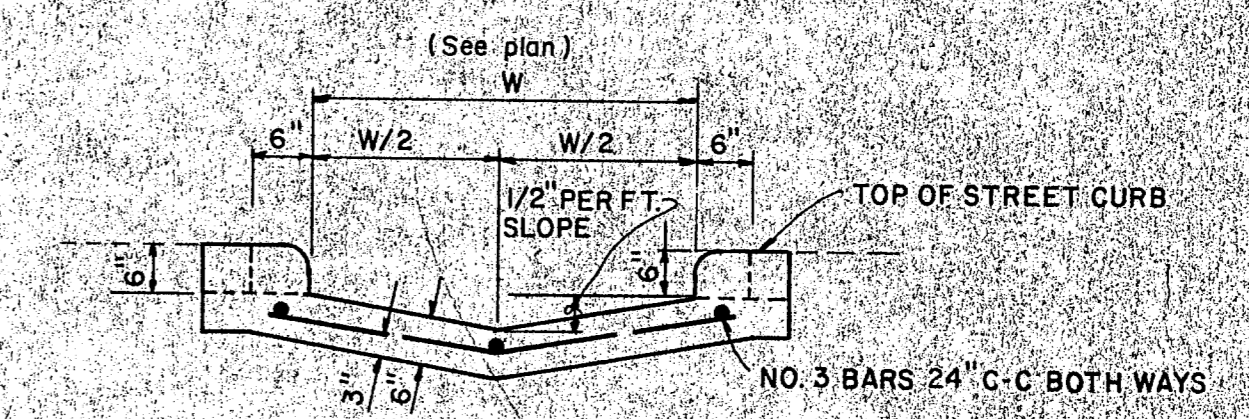
CONSTRUCTION JOINT
FOR 6" THICKNESS PAVEMENT OR BASE
IDENTICAL FOR STREETS AND ALLEYS EXCEPT ALLEY LONGITUDINAL REINFORCEMENT BARS.



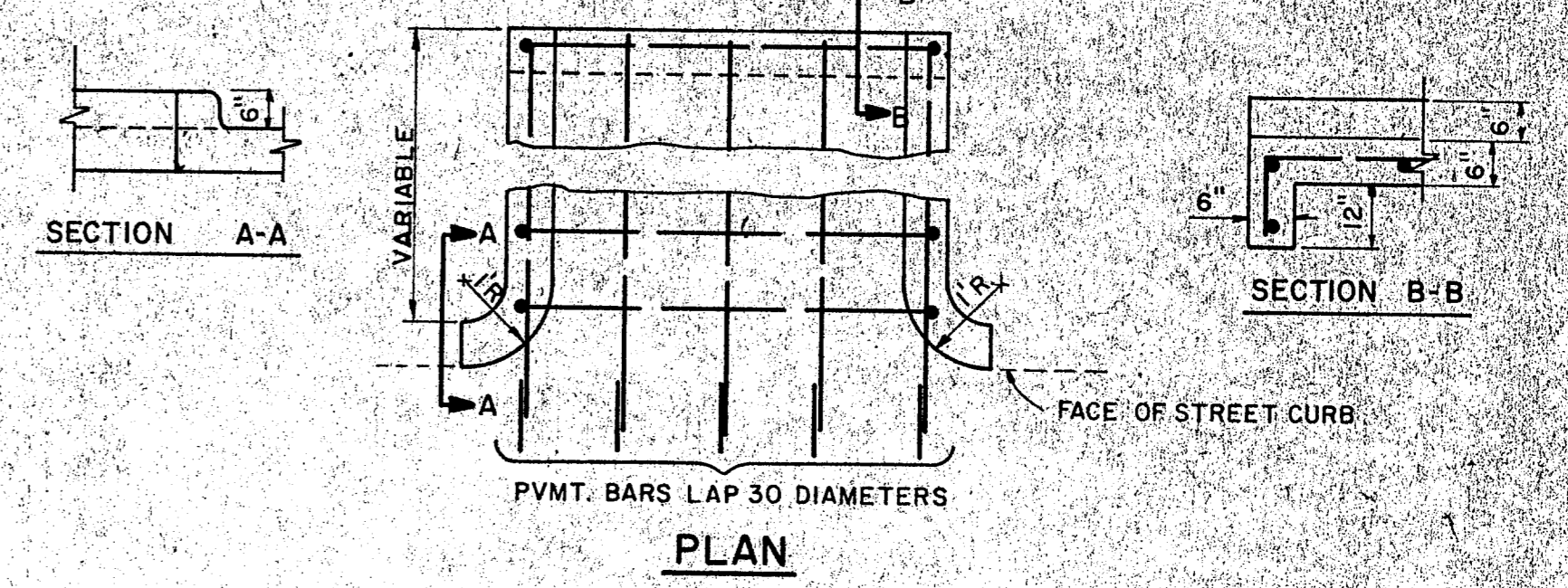
STREET HEADER



RAILROAD HEADER

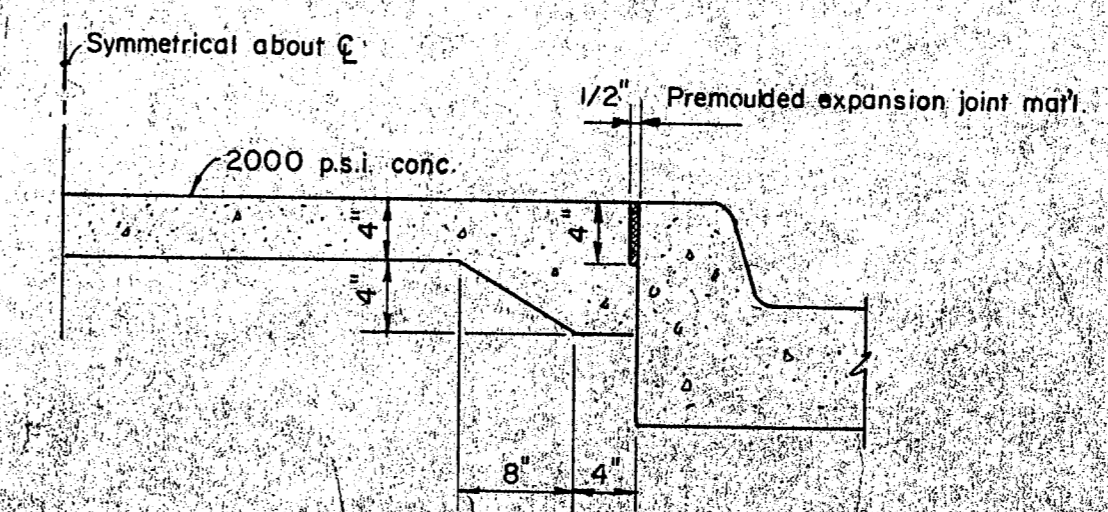


SECTION AT CURB FACE



PLAN

FLUME



NON-REINFORCED MEDIAN PAVEMENT

IN ALL AREAS LESS THAN 6' BC TO BC UNLESS OTHERWISE DIRECTED BY ENGINEER

Record Set 5/9/85

CITY OF ADDISON
DALLAS COUNTY, TEXAS
WESTGROVE / VOSS ROAD IMPROVEMENTS

STANDARD
PAVING DETAILS B

GINN, INC.

Consulting Engineers Dallas, Texas

DESIGNED: H.K. DRAWN: S.M.M. DATE: SEPT. 1982 JOB No. J-192

APPROVED: H.G. CHECKED: G.P. SCALE: NONE SHEET 19 OF