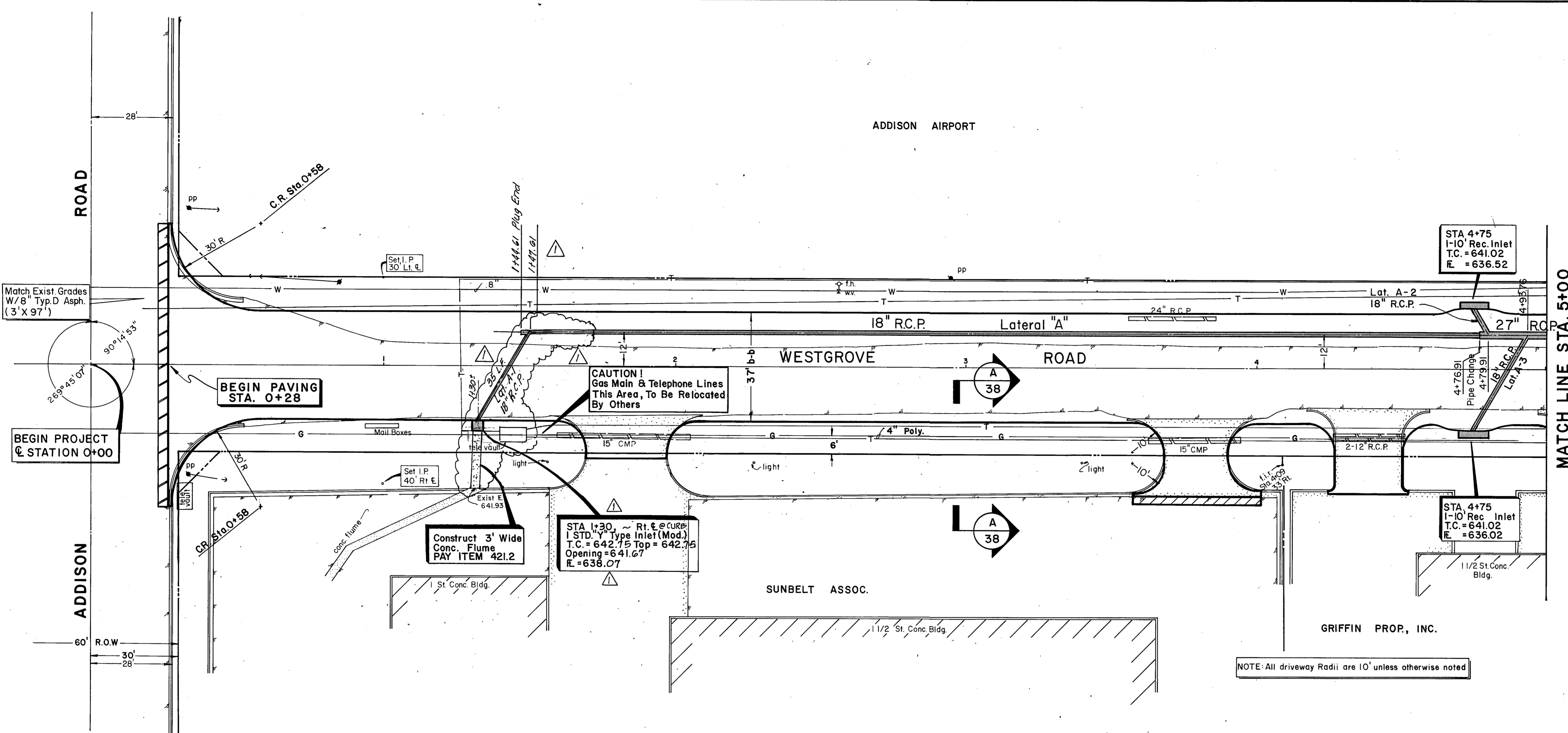


ADDISON AIRPORT



MATCH LINE STA. 5+00



BEGIN PAVING STA. 0+28

BEGIN PROJECT STATION 0+00

CAUTION!  
Gas Main & Telephone Lines  
This Area, To Be Relocated  
By Others

Construct 3' Wide  
Conc. Flume  
PAY ITEM 421.2

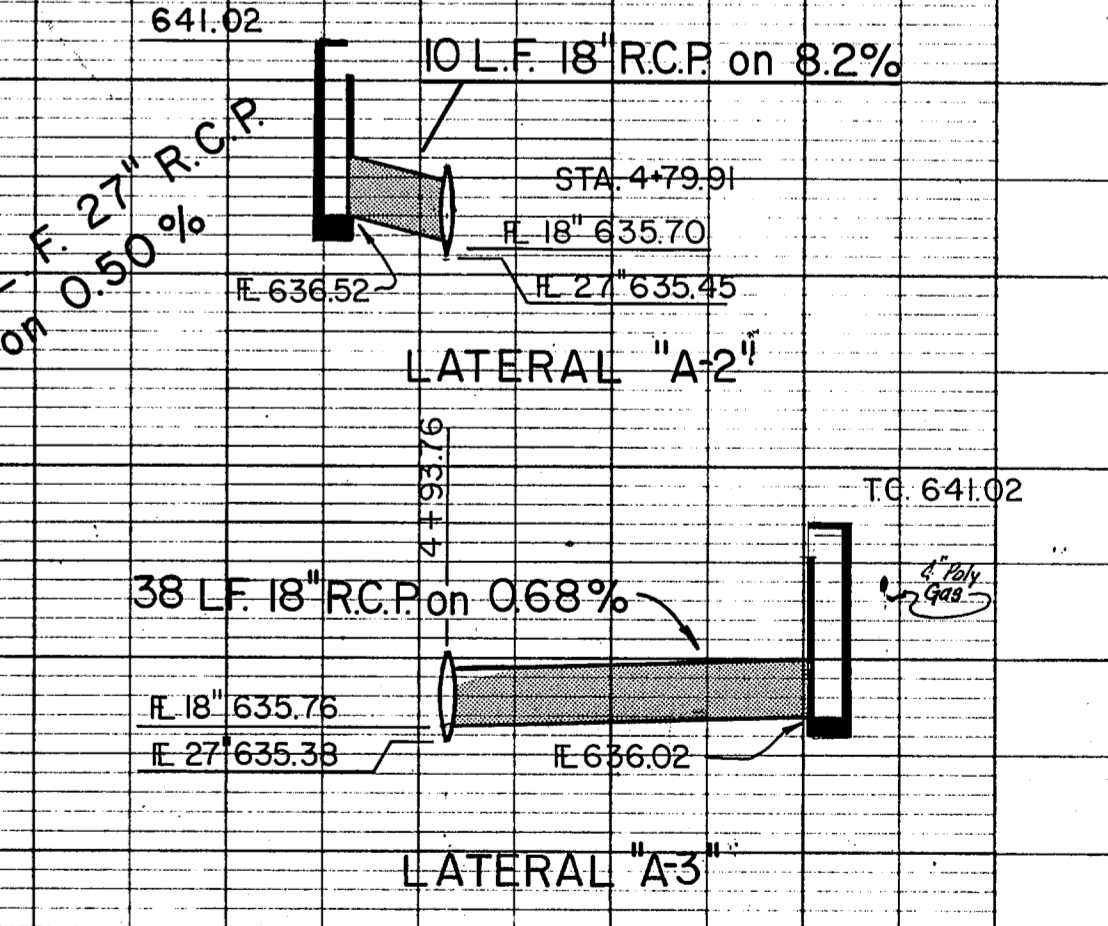
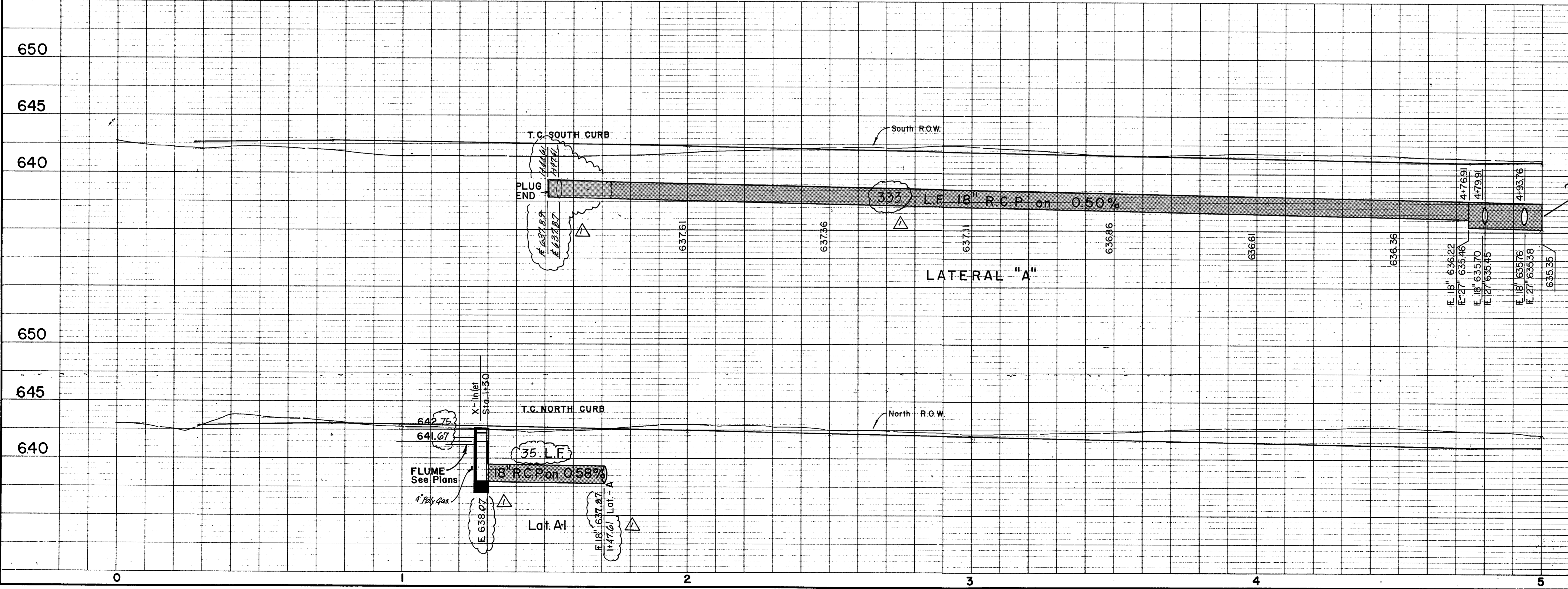
STA 4+30 ~ Rt. E. @ CURB  
1 STD. 4" Type Inlet (Mod.)  
T.C. = 642.75 Top = 642.75  
Opening = 641.67  
E. = 638.07

STA 4+75  
1-10" Rec. Inlet  
T.C. = 641.02  
E. = 636.52

STA 4+75  
1-10" Rec. Inlet  
T.C. = 641.02  
E. = 636.02

NOTE: All driveway Radii are 10' unless otherwise noted

B.M. #1 - "□" cut on T.C. No. side of Westgrove  
60' East of Addison Rd.  
ELEV. 641.96



Record Set 5/9/85

Revised Grades and lengths as required.  
Changed location of inlet, extended Lat. A - 21' to East

NO.	REVISION	BY	DATE
GF			1-19-83

CITY OF ADDISON  
DALLAS COUNTY, TEXAS

**WESTGROVE/VOSS ROAD IMPROVEMENTS**

**DRAINAGE - STA. 0+00 to STA. 5+00**

**GINN, INC.**  
Consulting Engineers - Dallas, Texas

DESIGNED - GF    DRAWN - R.G.B.    DATE - SEPT., 1982    FILE J-192  
APPROVED - H.W.G.    CHECKED - H.B.J.    SCALE - H-1"=20' V-1"=5'    SHEET 21 OF 21