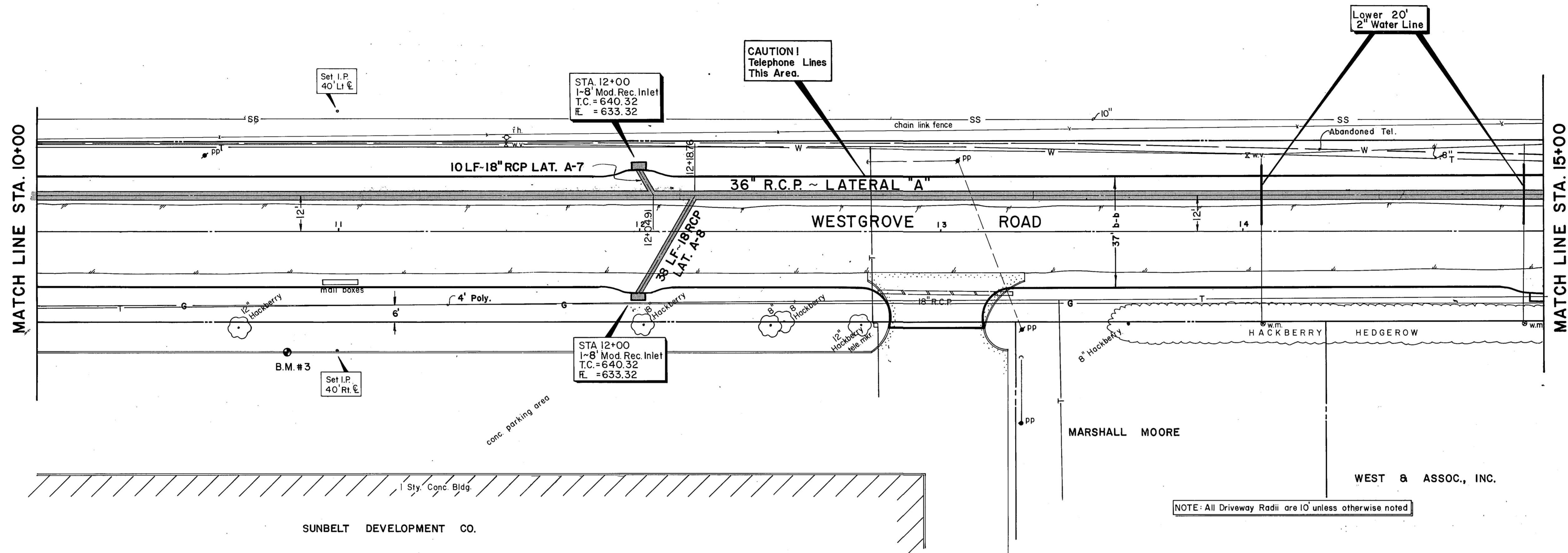
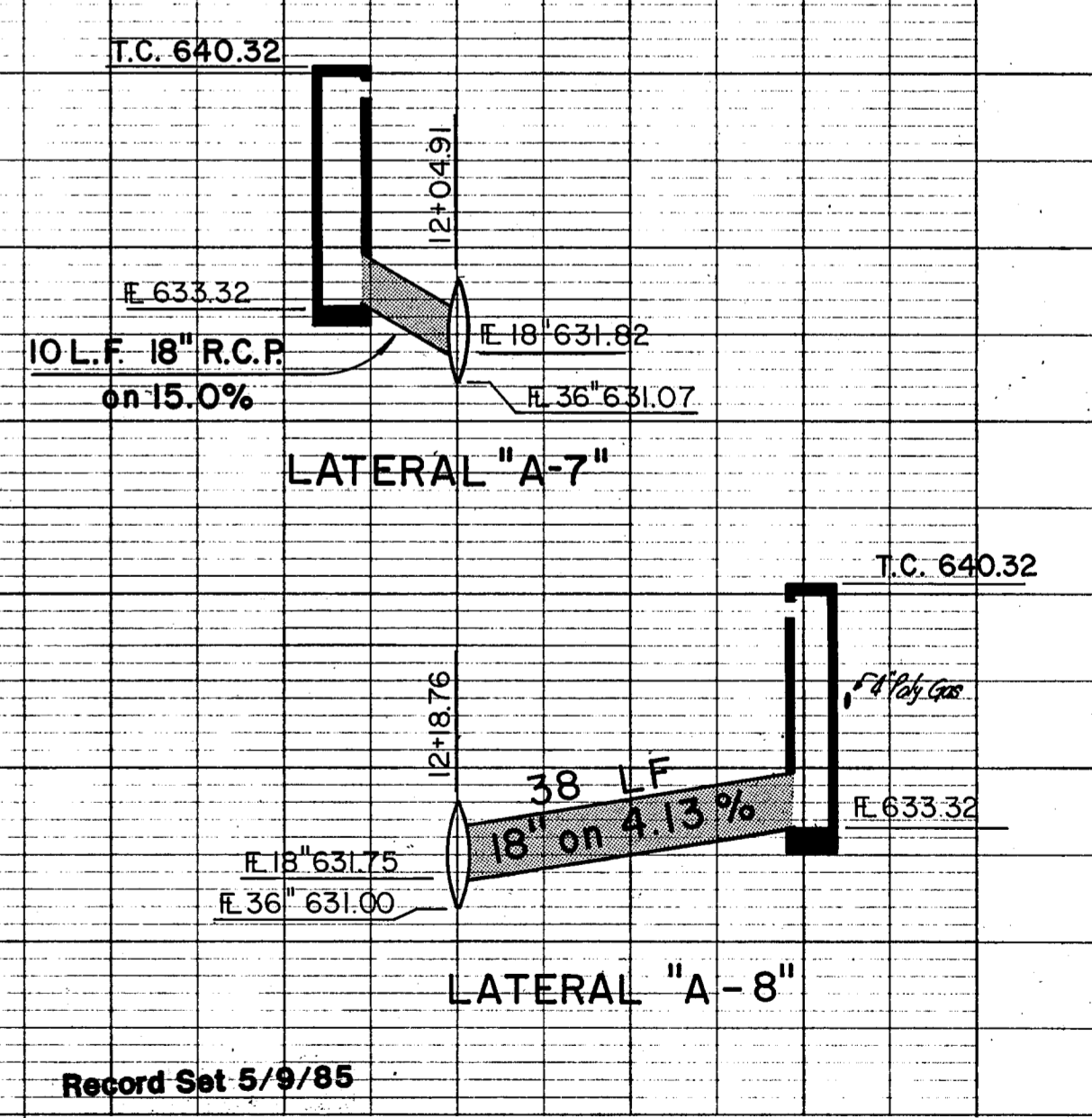
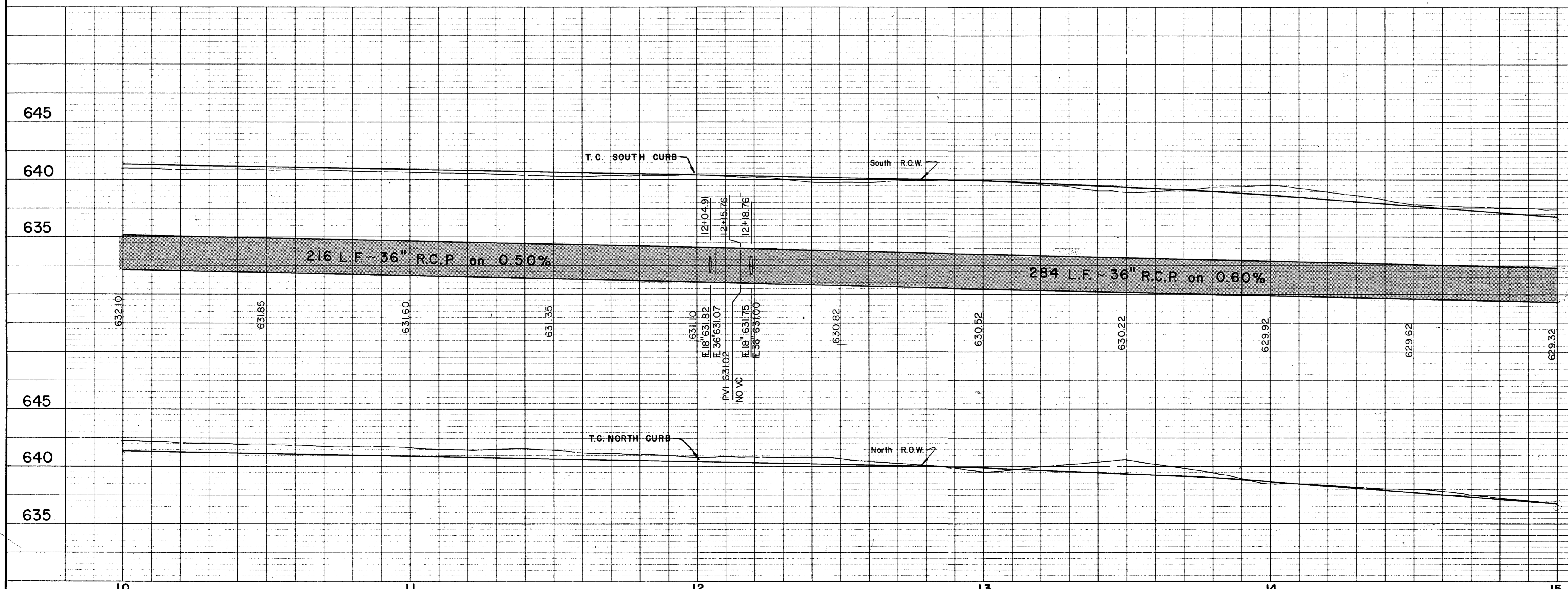


ADDISON AIRPORT



NOTE: All Driveway Radii are 10' unless otherwise noted

B.M.#3 - "I" cut on T.C. 40' Rt. Sta. 10+82 (4411 Westgrove) ELEV. 641.74



Record Set 5/9/85

NO.	REVISION	BY	DATE
CITY OF ADDISON DALLAS COUNTY, TEXAS WESTGROVE / VOSS ROAD IMPROVEMENTS DRAINAGE - STA. 10+00 to STA. 15+00 GINN, INC. Consulting Engineers - Dallas, Texas			
DESIGNED - GF	DRAWN - RGB	DATE - SEPT., 1982	FILE J-192
APPROVED - HWG	CHECKED - HBJ	SCALE - H - 1" = 20' / V - 1" = 5'	SHEET 23 OF