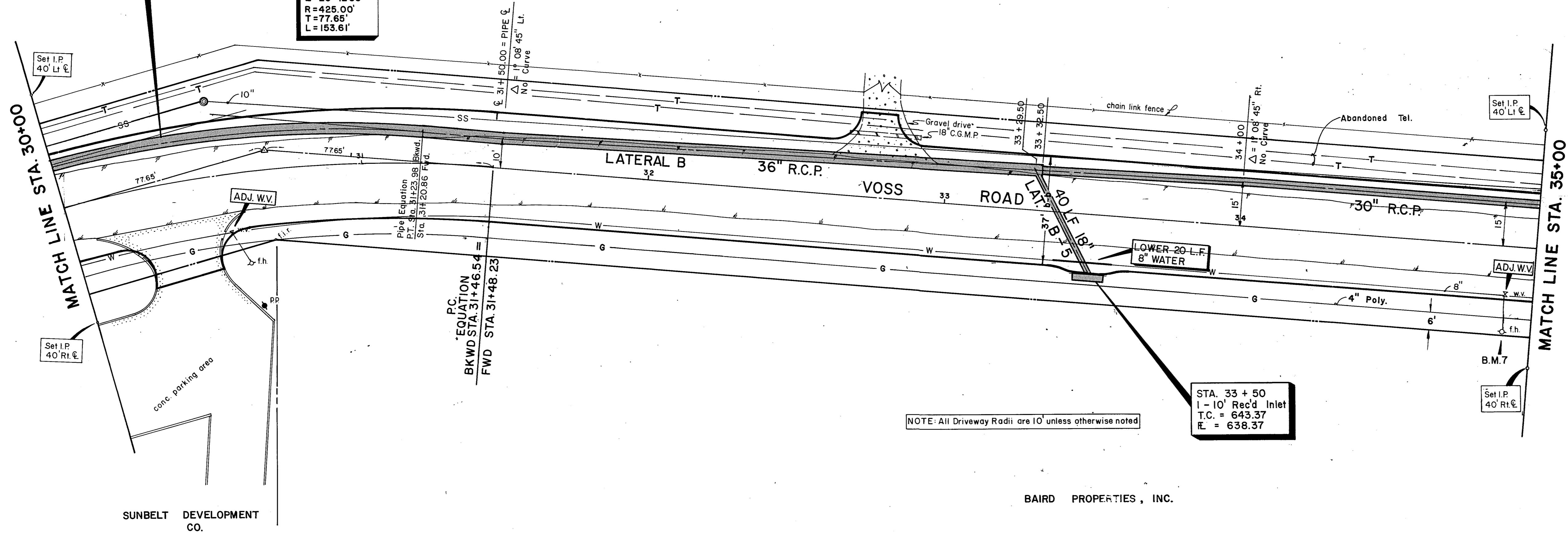


PIPE DATA
 $\Delta = 20^\circ 42' 30''$
 $T = 66.25'$
 $R = 362.60'$
 $L = 131.05'$

CURVE DATA
 $\Delta = 20^\circ 42' 30''$
 $R = 425.00'$
 $T = 77.65'$
 $L = 153.61'$

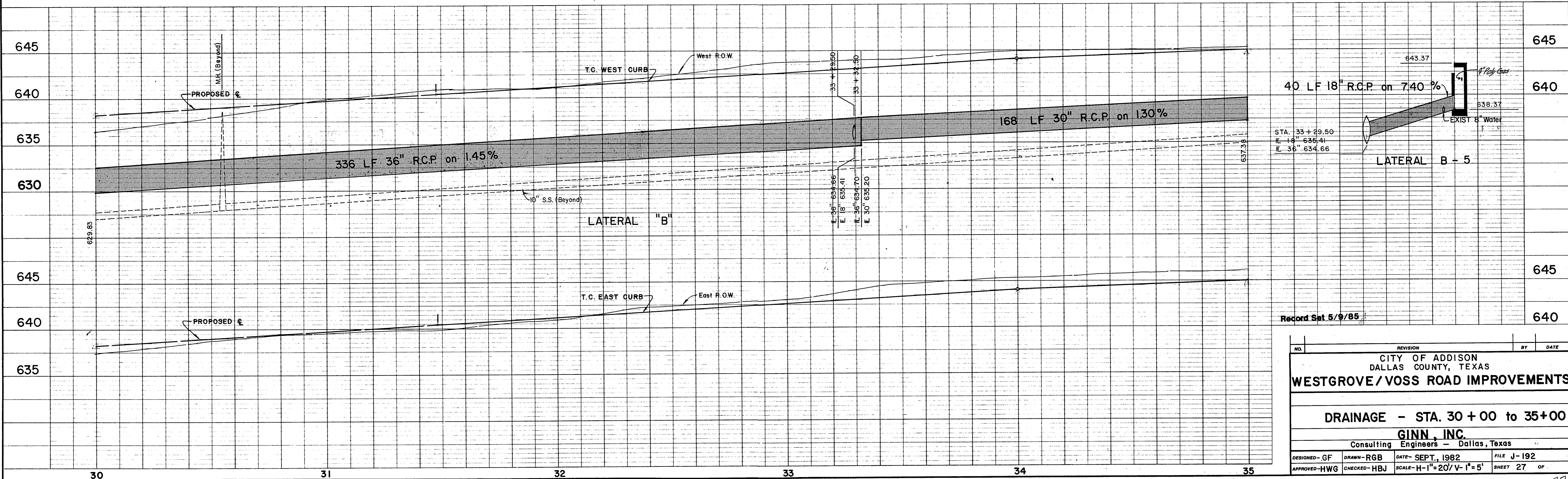
ADDISON AIRPORT



NOTE: All Driveway Radii are 10' unless otherwise noted

STA. 33 + 50
 1-10' Rec'd Inlet
 T.C. = 643.37
 E. = 638.37

B.M.#7 - Top F.H. 28.5' Rt. Sta. 34+91.50
 ELEV. 649.13



Record Set 5/9/85

| | | | |
|--|---------------|--------------------------|-------------|
| NO. | REVISION | BY | DATE |
| CITY OF ADDISON DALLAS COUNTY, TEXAS WESTGROVE/VOSS ROAD IMPROVEMENTS | | | |
| DRAINAGE - STA. 30 + 00 to 35 + 00 GINN, INC. Consulting Engineers - Dallas, Texas | | | |
| DESIGNED - GF | DRAWN - RGB | DATE - SEPT., 1982 | FILE J-192 |
| APPROVED - HWG | CHECKED - HBJ | SCALE - H-1"=20'/V-1"=5' | SHEET 27 OF |