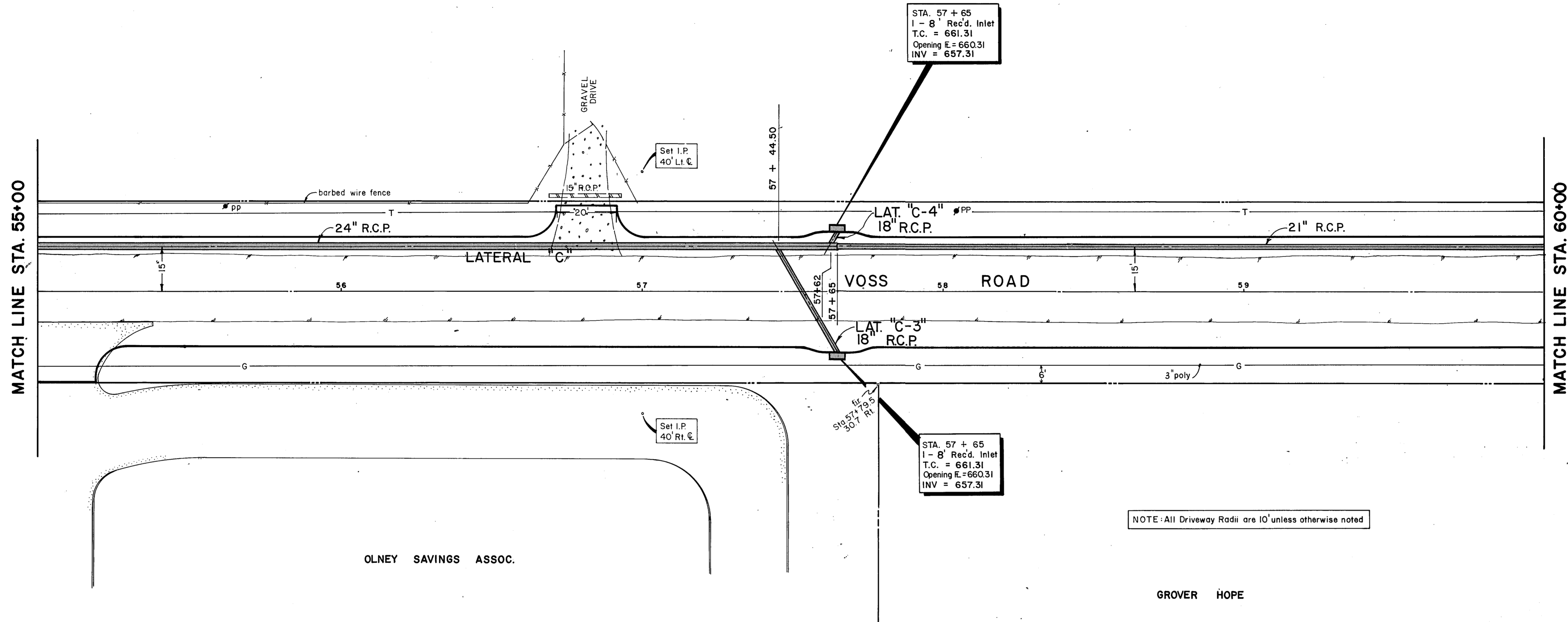


CONNELL DEVELOPMENT CO.

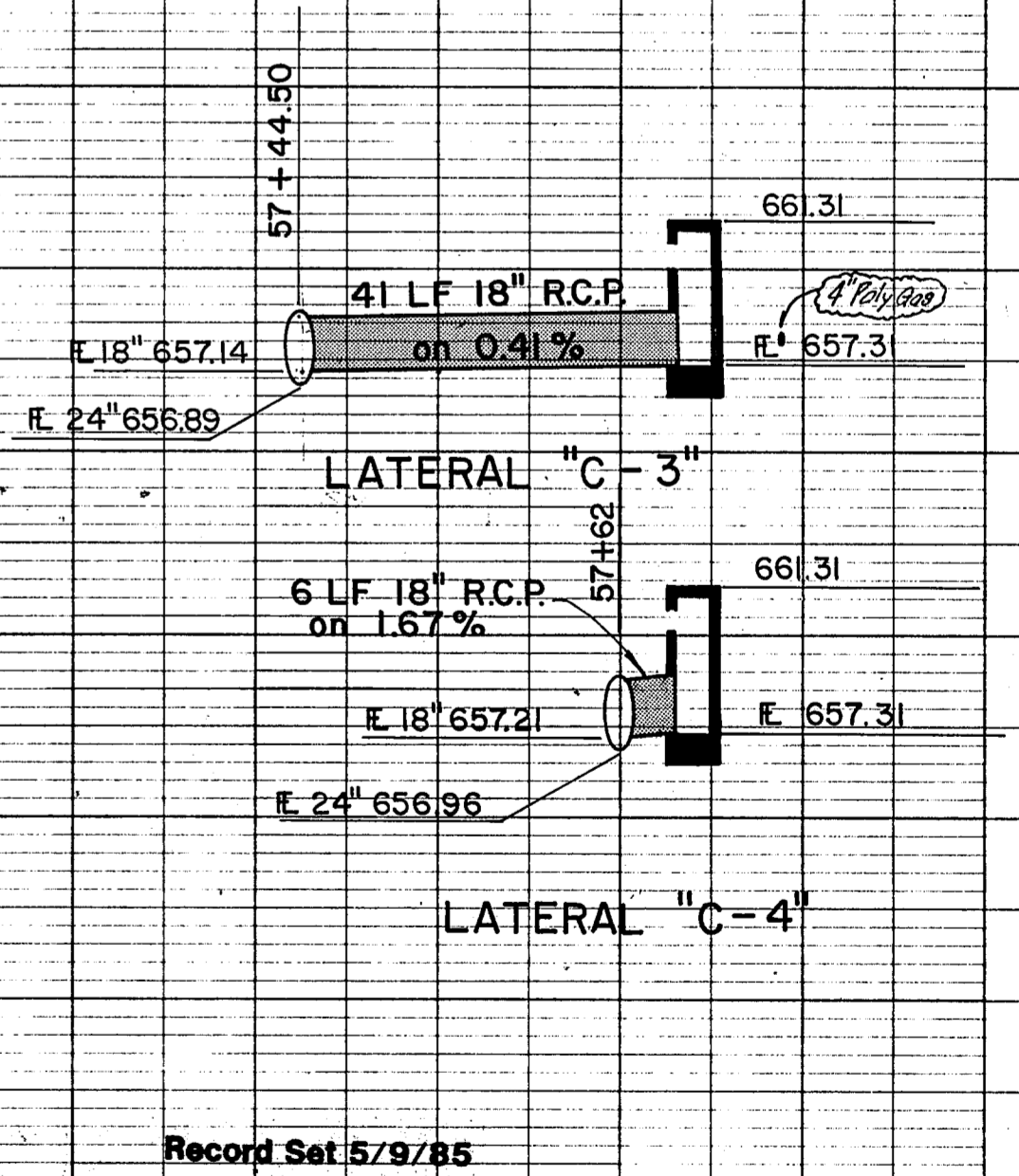
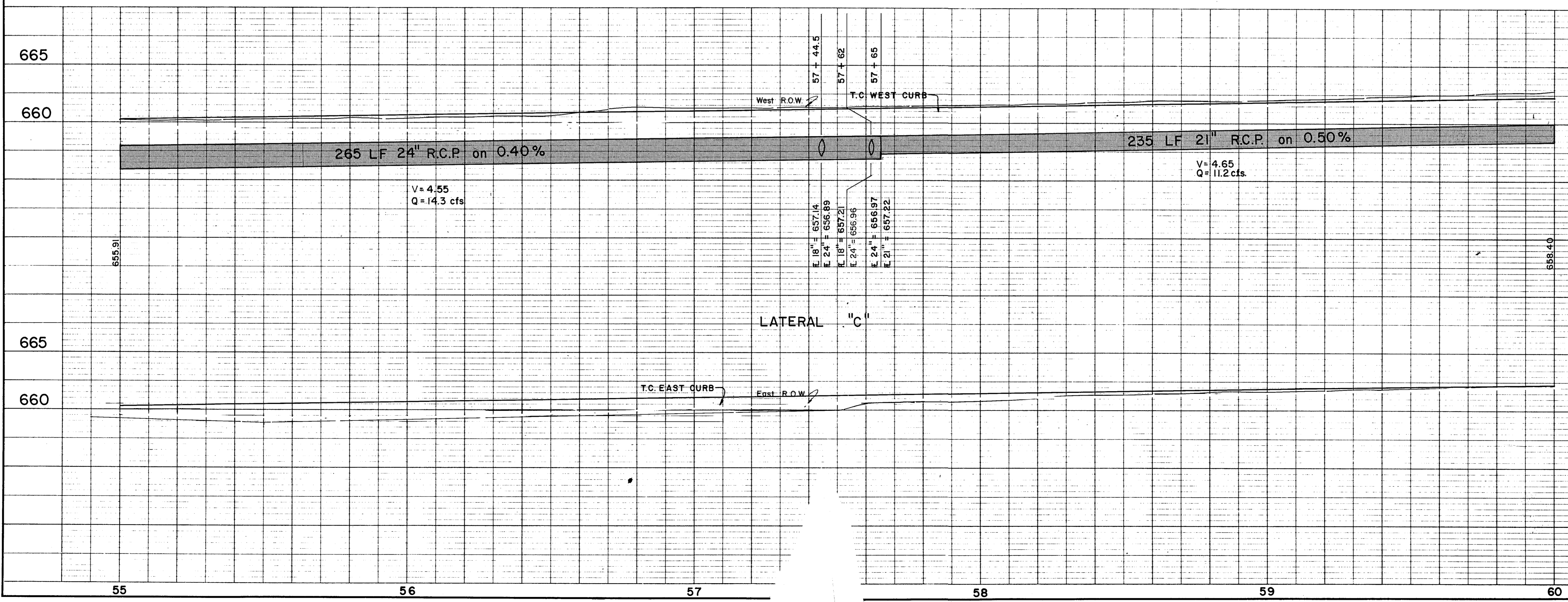


STA. 57 + 65
1 - 8" Rec'd. Inlet
T.C. = 661.31
Opening E. = 660.31
INV = 657.31

STA. 57 + 65
1 - 8" Rec'd. Inlet
T.C. = 661.31
Opening E. = 660.31
INV = 657.31

NOTE: All Driveway Radii are 10' unless otherwise noted

B.M. #9 - "X" cut on T.C. No. side Sojourn Ln.
55' Rt. Sta. 51+25
ELEV. 660.49



NO.	REVISION	BY	DATE
CITY OF ADDISON DALLAS COUNTY, TEXAS			
WESTGROVE/VOSS ROAD IMPROVEMENTS			
DRAINAGE - STA. 55+00 to 60+00			
GINN, INC. Consulting Engineers - Dallas, Texas			
DESIGNED - GF	DRAWN - RGB	DATE - SEPT., 1982	FILE J-192
APPROVED - HWG	CHECKED - HBJ	SCALE - H-1"=20'/V-1"=6'	SHEET 32 OF