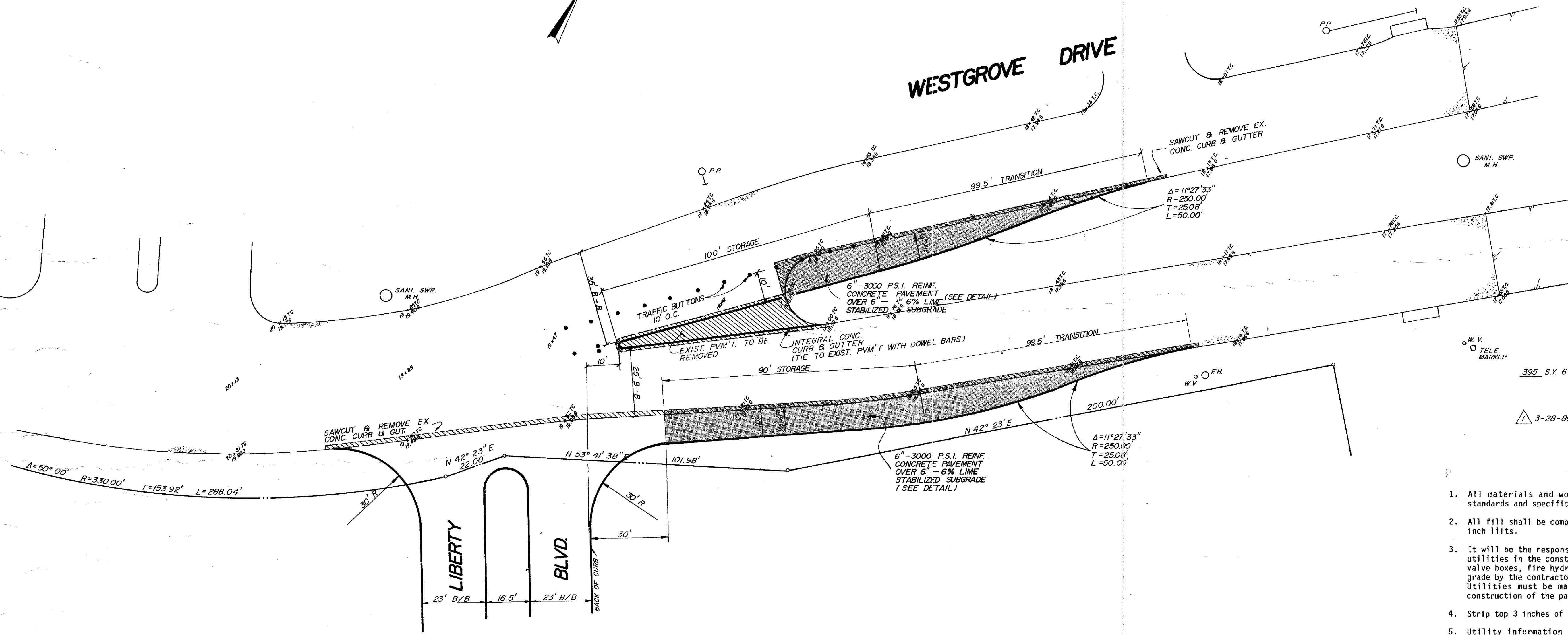


# WESTGROVE DRIVE



395 S.Y. 6" REINF. CONC. STREET PAVEMENT.

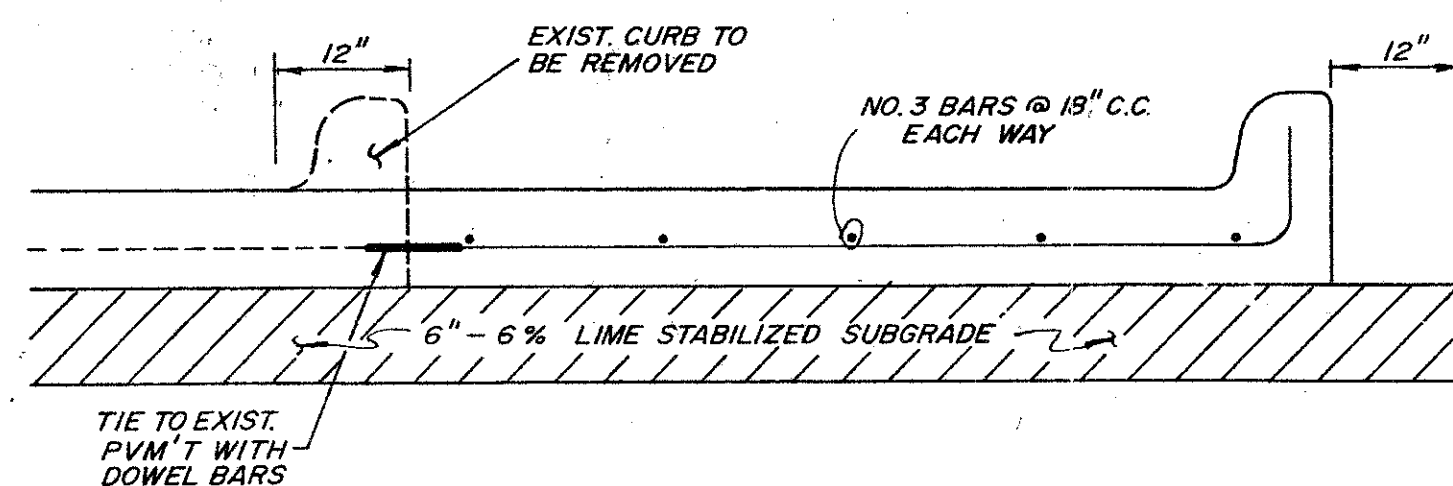
△ 3-28-86 ADD CONCRETE QUANTITY

### PAVING GENERAL NOTES

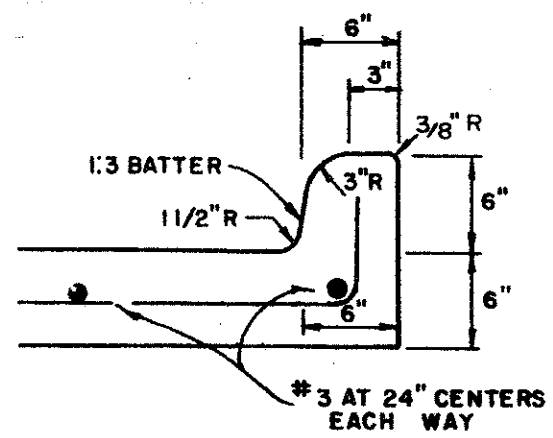
- All materials and workmanship shall conform to the Town of Addison standards and specifications.
- All fill shall be compacted to 95% Proctor Density in a maximum of six (6) inch lifts.
- It will be the responsibility of the contractor to protect all public utilities in the construction of this project. All manholes, cleanouts, valve boxes, fire hydrants, etc., must be adjusted to proper line and grade by the contractor prior to and after the placing permanent paving. Utilities must be maintained to proper line and grade during the construction of the paving for this development.
- Strip top 3 inches of topsoil and reuse material outside paved area.
- Utility information is based upon field measurements, and the best available records. Field data is limited to that which is visible and can be measured. This does not preclude the existence of other underground items. Record information is based upon data collected from both public and private sources. The completeness and/or accuracy of these records cannot be guaranteed, except insofar as they can be verified by the field measurements.
- Expansion joints and saw-cut joints shall be per Town of Addison standards.

BM NO. 1  
 SQUARE CUT ON TOP OF CURB AT THE RADIUS RETURN OF AN ISLAND LOCATED NEAR THE NORTHEAST CORNER OF LIBERTY PLAZA 1, APPROXIMATELY 639 FEET NORTH OF THE SOUTHEAST PROPERTY CORNER.  
 ELEV. 622.14

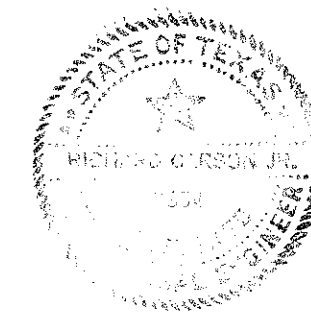
BM NO. 2  
 CHISEL SQUARE ON THE END OF THE CURB RADIUS LOCATED ON THE DRIVEWAY ON THE NORTH SIDE OF KELLER SPRINGS ROAD, APPROXIMATELY 500 FEET WEST OF DALLAS PARKWAY.  
 ELEV. 626.24



**TYPICAL SECTION**  
 N.T.S.



**INTEGRAL CURB DETAIL**  
 N.T.S.



**WESTGROVE DRIVE IMPROVEMENTS**  
 LIBERTY PLAZA  
 ADDISON, TEXAS  
**JACK R. DAVIS**  
 & associates, inc.  
 consulting civil engineers & surveyors  
 3535 Travis Street Suite 100  
 Dallas, Texas 75204 (214) 522-9540

design	drawn	date	scale	notes	job no.	sheet no.
T.B.	J.S.S.	3/85	1"=20'	F.G.	CB4146T	11 of 16