

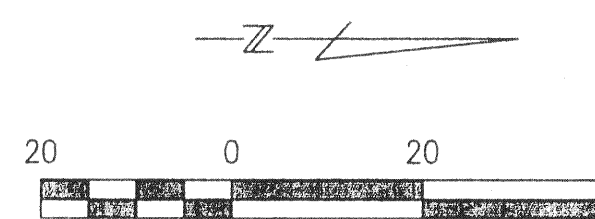
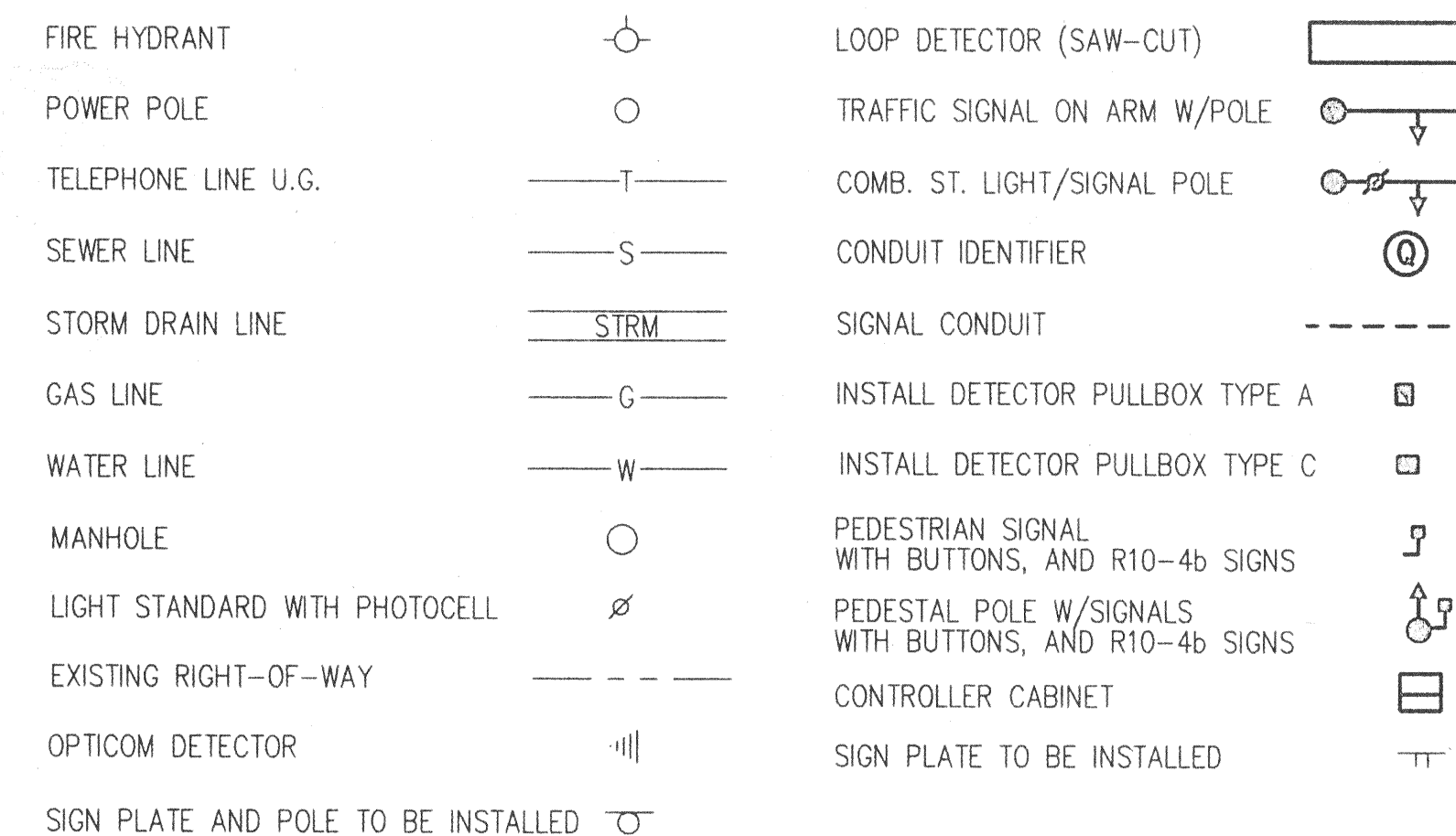
**CABLE TERMINATION CHART**

CABLE CONDUCTOR	T-1		T-2		T-3		T-4	
	S.H. NO.	INDICATION	S.H. NO.	INDICATION	S.H. NO.	INDICATION	S.H. NO.	INDICATION
BLACK	SPARE		SPARE		SPARE		SPARE	
WHITE	COMMON		COMMON		COMMON		COMMON	
RED	1-3	R	4-6	R	7-9	R	10-12	R
GREEN	1-3	Y	4-6	Y	7-9	Y	10-12	Y
ORANGE	1-3	G	4-6	G	7-9	G	10-12	G
BLUE/BLACK	1	←Y	SPARE		7	←Y	SPARE	
WHITE/BLACK	1	←G	4	←G	7	←G	10	←G
RED/BLACK	13	W	15	W	17	W	19	W
GREEN/BLACK	14	W	16	W	18	W	20	W
ORANGE/BLACK	13	DW	15	DW	17	DW	19	DW
BLUE/BLACK	14	DW	16	DW	18	DW	20	DW
BLACK/WHITE	PB13	Ø4	PB15	Ø6	PB17	Ø3	PB19	Ø2
RED/WHITE	PB14	Ø6	PB16	Ø3	PB18	Ø2	PB20	Ø4
GREEN/WHITE	P.B. COM.		P.B. COM.		P.B. COM.		P.B. COM.	
BLUE/WHITE	SPARE		6	Y→	SPARE		12	Y→
BLACK/RED	SPARE		6	G→	SPARE		12	G→

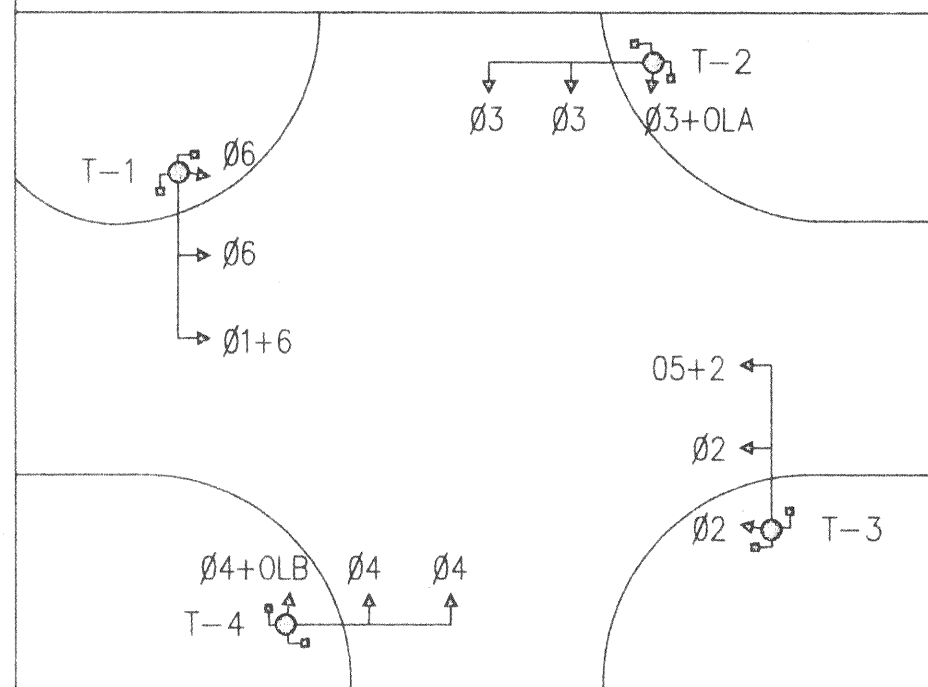
**CONDUIT RUNS**

RUN NO.	SIZE/TYPE CONDUIT	CABLE TYPE					LENGTH OF RUN	FINAL
		#6 XHHW WIRE	#6 BARE WIRE	#18 AWG SHLD. PR.	3 CNDR. CABLE	16 CNDR. CABLE		
A	2-3" PVC (Trenched)	1	1	8	3	3	30	
B	2-3" PVC (Trenched)		1	5	2	2	10	
C	3" PVC (Trenched)		1		1	1	15	
D	2-3" PVC (Existing)		1	4	2	2	55	
E	3" PVC (Trenched)		1		1	1	10	
F	2-3" PVC (Existing)		1	3	1	1	85	
G	3" PVC (Trenched)		1		1	1	25	
H	2-3" PVC (Existing)		1				55	
I	3" PVC (Trenched)		1		1	1	10	
J	2" PVC (Trenched)	2	1				10	
K	2" PVC (Trenched)			1			150	
L	2" PVC (Trenched)			1			135	
M	2" PVC (Trenched)			1			150	
N	2" PVC (Trenched)			1			135	
O	2-3" PVC (Boring)		1	1	1	1	85	

**LEGEND**



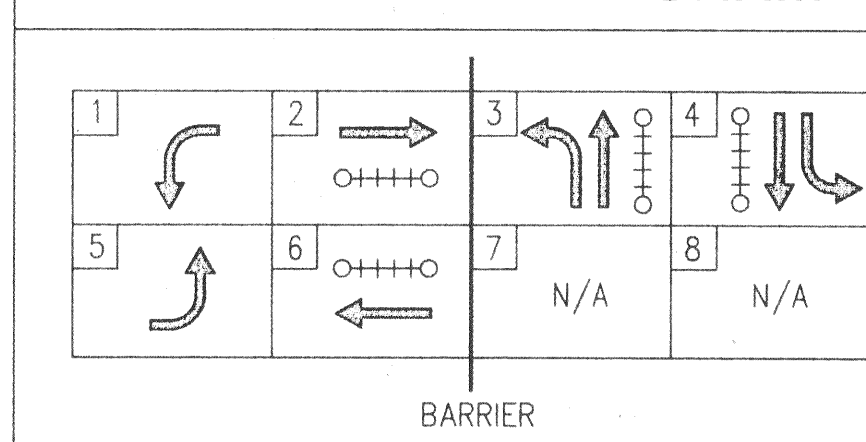
**SIGNAL HEAD PHASING**



**PAVEMENT MARKINGS**

TYPE	QUANTITY	UNIT
6" X 6" WHITE REFLECTIVE JIGGLE BARS	104	EA.
4" YELLOW BIDIRECTIONAL RETROREFLECTIVE RAISED BUTTONS	280	EA.
4" YELLOW RAISED BUTTONS	910	EA.
24" SOLID WHITE ALKYD THERMOPLASTIC	105	FT.
4" SOLID WHITE ALKYD THERMOPLASTIC	60	FT.
SOLID WHITE ALKYD THERMOPLASTIC LEFT ARROW	2	EA.
SOLID WHITE ALKYD THERMOPLASTIC RIGHT ARROW	2	EA.
SOLID WHITE ALKYD THERMOPLASTIC "ONLY"	4	EA.
SOLID WHITE ALKYD THERMOPLASTIC THROUGH/LEFT ARROW	2	EA.

**NEMA PHASE DIAGRAM**



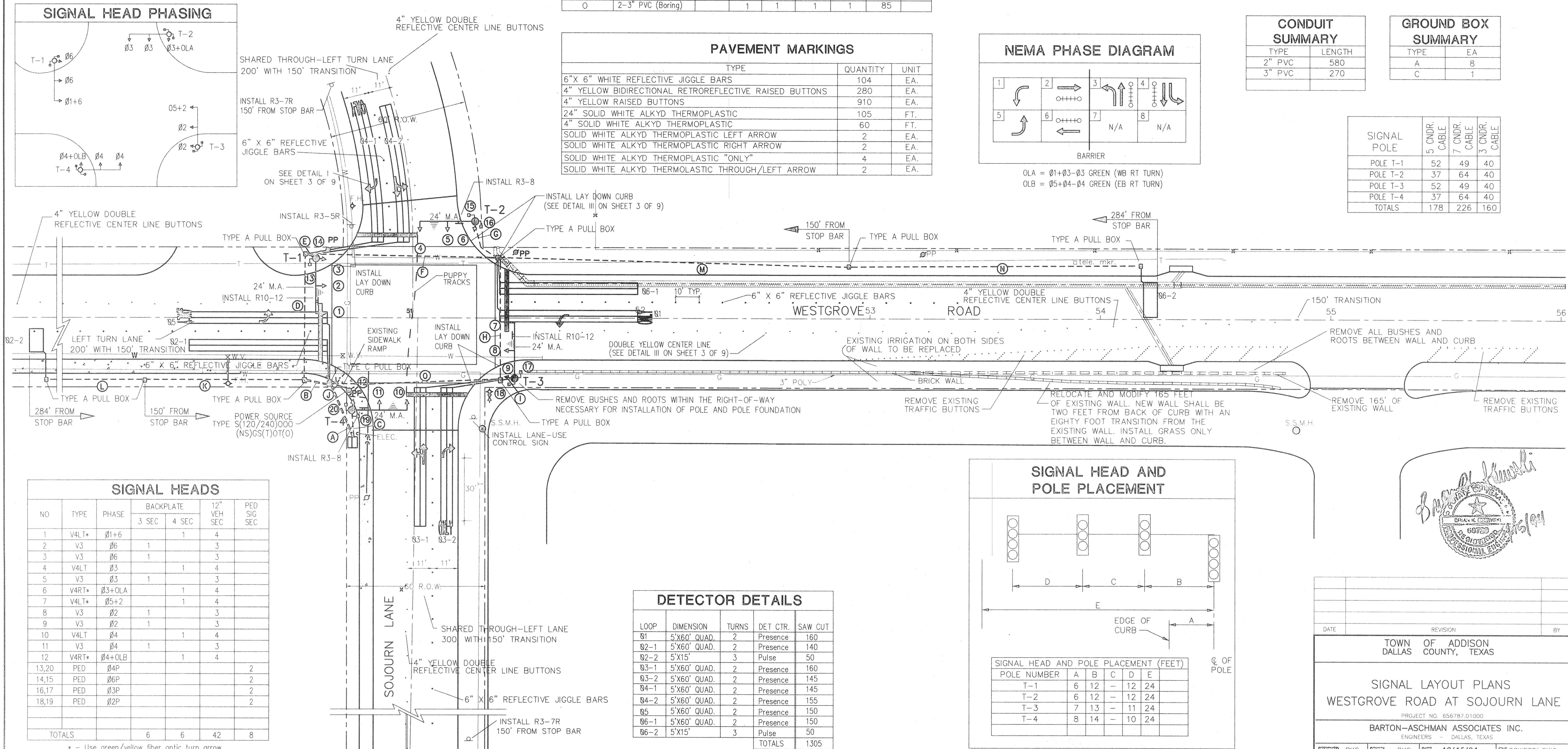
**CONDUIT SUMMARY**

TYPE	LENGTH
2" PVC	580
3" PVC	270

**GROUND BOX SUMMARY**

TYPE	EA
A	8
C	1

SIGNAL POLE	5 CNDR. CABLE	7 CNDR. CABLE	3 CNDR. CABLE
POLE T-1	52	49	40
POLE T-2	37	64	40
POLE T-3	52	49	40
POLE T-4	37	64	40
TOTALS	178	226	160



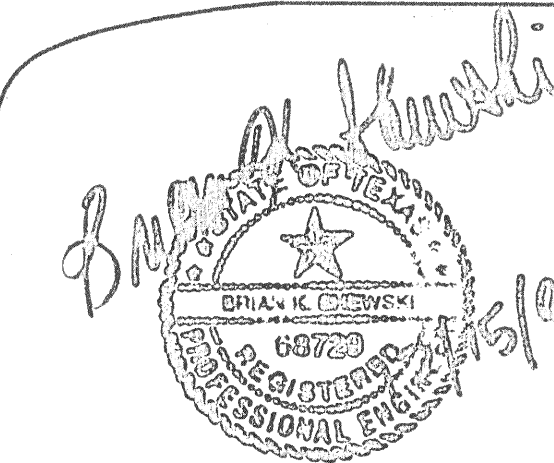
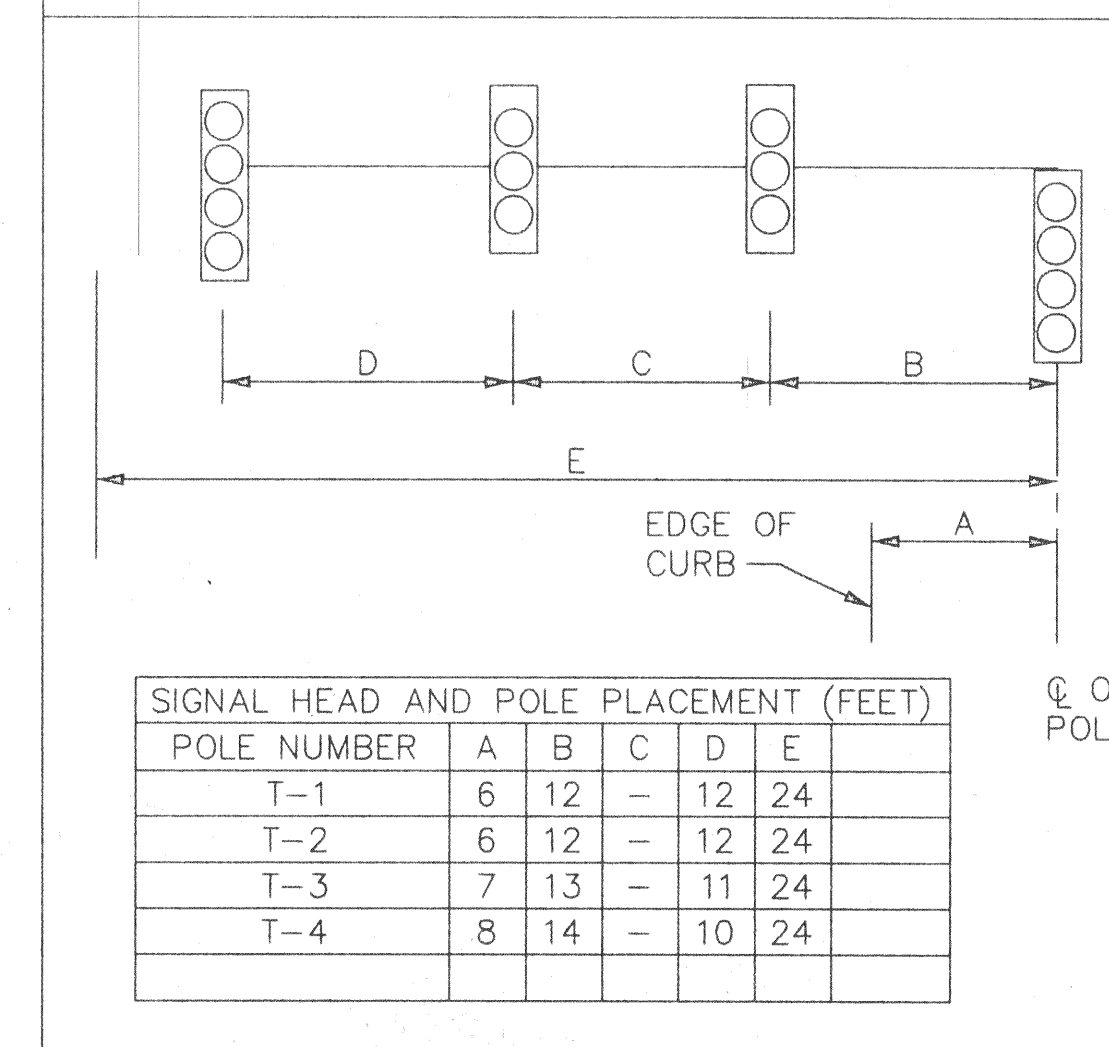
**SIGNAL HEADS**

NO	TYPE	PHASE	BACKPLATE		12" VEH SEC	PED SIG SEC
			3 SEC	4 SEC		
1	V4LT*	Ø1+6		1	4	
2	V3	Ø6	1		3	
3	V3	Ø6	1		3	
4	V4LT	Ø3		1	4	
5	V3	Ø3	1		3	
6	V4RT*	Ø3+OLA		1	4	
7	V4LT*	Ø5+2		1	4	
8	V3	Ø2	1		3	
9	V3	Ø2	1		3	
10	V4LT	Ø4		1	4	
11	V3	Ø4	1		3	
12	V4RT*	Ø4+OLB		1	4	
13,20	PED	Ø4P				2
14,15	PED	Ø6P				2
16,17	PED	Ø3P				2
18,19	PED	Ø2P				2
TOTALS			6	6	42	8

**DETECTOR DETAILS**

LOOP	DIMENSION	TURNS	DET. CTR.	SAW CUT
Ø1	5'X60' QUAD.	2	Presence	160
Ø2-1	5'X60' QUAD.	2	Presence	140
Ø2-2	5'X15'	3	Pulse	50
Ø3-1	5'X60' QUAD.	2	Presence	160
Ø3-2	5'X60' QUAD.	2	Presence	145
Ø4-1	5'X60' QUAD.	2	Presence	145
Ø4-2	5'X60' QUAD.	2	Presence	155
Ø5	5'X60' QUAD.	2	Presence	150
Ø6-1	5'X60' QUAD.	2	Presence	150
Ø6-2	5'X15'	3	Pulse	50
TOTALS				1305

**SIGNAL HEAD AND POLE PLACEMENT**



TOWN OF ADDISON  
DALLAS COUNTY, TEXAS

SIGNAL LAYOUT PLANS  
WESTGROVE ROAD AT SOJOURN LANE

PROJECT NO. 656787.01.000

BARTON-ASCHMAN ASSOCIATES INC.  
ENGINEERS - DALLAS, TEXAS

DATE: 12/15/94  
BY: SOWESTA, DWG

REVISION: 1" = 20'  
SHEET 2 OF 9

\* - Use green/yellow fiber optic turn arrow.