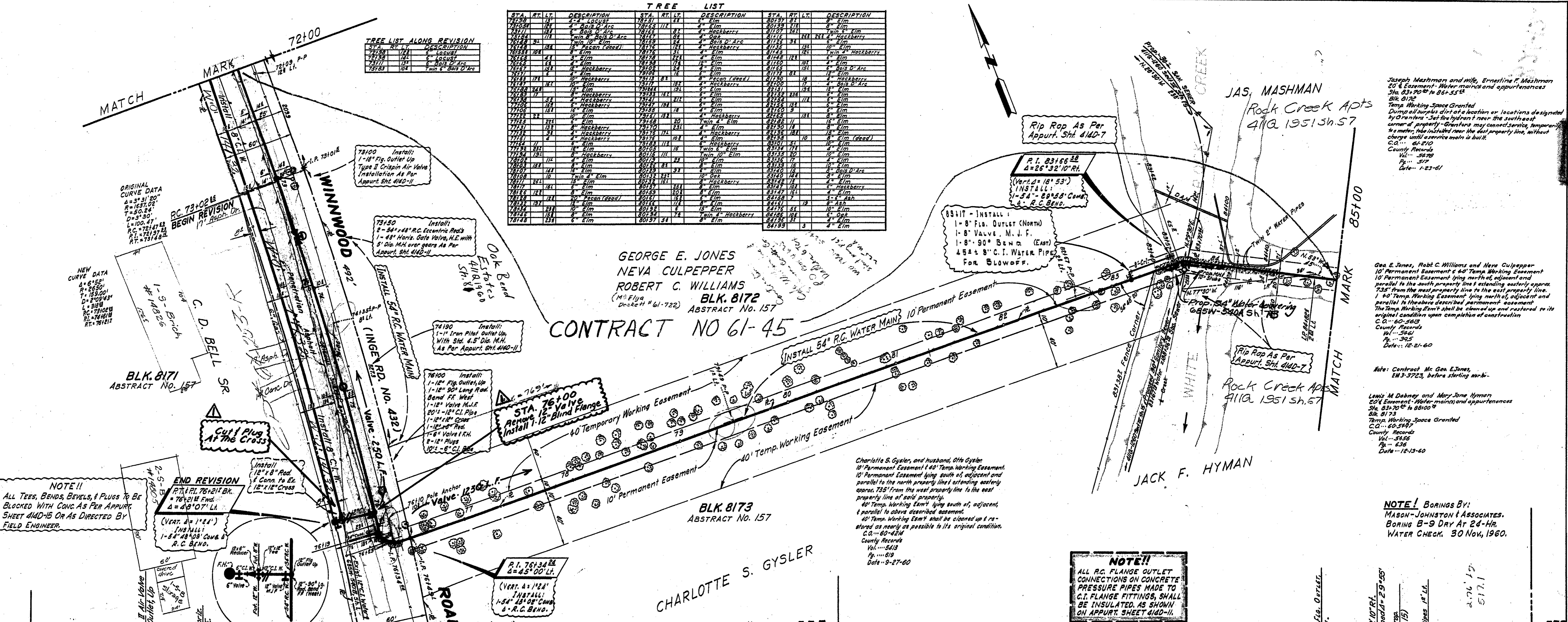


STA.	RT.	LT.	DESCRIPTION	STA.	RT.	LT.	DESCRIPTION
7299	18	2	4" Locust	7300	18	2	4" Elm
7300	18	2	4" Red Oak	7301	18	2	4" Elm
7301	18	2	4" Red Oak	7302	18	2	4" Elm
7302	18	2	4" Red Oak	7303	18	2	4" Elm
7303	18	2	4" Red Oak	7304	18	2	4" Elm
7304	18	2	4" Red Oak	7305	18	2	4" Elm
7305	18	2	4" Red Oak	7306	18	2	4" Elm
7306	18	2	4" Red Oak	7307	18	2	4" Elm
7307	18	2	4" Red Oak	7308	18	2	4" Elm
7308	18	2	4" Red Oak	7309	18	2	4" Elm
7309	18	2	4" Red Oak	7310	18	2	4" Elm
7310	18	2	4" Red Oak	7311	18	2	4" Elm
7311	18	2	4" Red Oak	7312	18	2	4" Elm
7312	18	2	4" Red Oak	7313	18	2	4" Elm
7313	18	2	4" Red Oak	7314	18	2	4" Elm
7314	18	2	4" Red Oak	7315	18	2	4" Elm
7315	18	2	4" Red Oak	7316	18	2	4" Elm
7316	18	2	4" Red Oak	7317	18	2	4" Elm
7317	18	2	4" Red Oak	7318	18	2	4" Elm
7318	18	2	4" Red Oak	7319	18	2	4" Elm
7319	18	2	4" Red Oak	7320	18	2	4" Elm
7320	18	2	4" Red Oak	7321	18	2	4" Elm
7321	18	2	4" Red Oak	7322	18	2	4" Elm
7322	18	2	4" Red Oak	7323	18	2	4" Elm
7323	18	2	4" Red Oak	7324	18	2	4" Elm
7324	18	2	4" Red Oak	7325	18	2	4" Elm
7325	18	2	4" Red Oak	7326	18	2	4" Elm
7326	18	2	4" Red Oak	7327	18	2	4" Elm
7327	18	2	4" Red Oak	7328	18	2	4" Elm
7328	18	2	4" Red Oak	7329	18	2	4" Elm
7329	18	2	4" Red Oak	7330	18	2	4" Elm
7330	18	2	4" Red Oak	7331	18	2	4" Elm
7331	18	2	4" Red Oak	7332	18	2	4" Elm
7332	18	2	4" Red Oak	7333	18	2	4" Elm
7333	18	2	4" Red Oak	7334	18	2	4" Elm
7334	18	2	4" Red Oak	7335	18	2	4" Elm
7335	18	2	4" Red Oak	7336	18	2	4" Elm
7336	18	2	4" Red Oak	7337	18	2	4" Elm
7337	18	2	4" Red Oak	7338	18	2	4" Elm
7338	18	2	4" Red Oak	7339	18	2	4" Elm
7339	18	2	4" Red Oak	7340	18	2	4" Elm
7340	18	2	4" Red Oak	7341	18	2	4" Elm
7341	18	2	4" Red Oak	7342	18	2	4" Elm
7342	18	2	4" Red Oak	7343	18	2	4" Elm
7343	18	2	4" Red Oak	7344	18	2	4" Elm
7344	18	2	4" Red Oak	7345	18	2	4" Elm
7345	18	2	4" Red Oak	7346	18	2	4" Elm
7346	18	2	4" Red Oak	7347	18	2	4" Elm
7347	18	2	4" Red Oak	7348	18	2	4" Elm
7348	18	2	4" Red Oak	7349	18	2	4" Elm
7349	18	2	4" Red Oak	7350	18	2	4" Elm

STA.	RT.	LT.	DESCRIPTION
7317	18	2	4" Locust
7317	18	2	4" Red Oak
7317	18	2	4" Red Oak
7317	18	2	4" Red Oak
7317	18	2	4" Red Oak

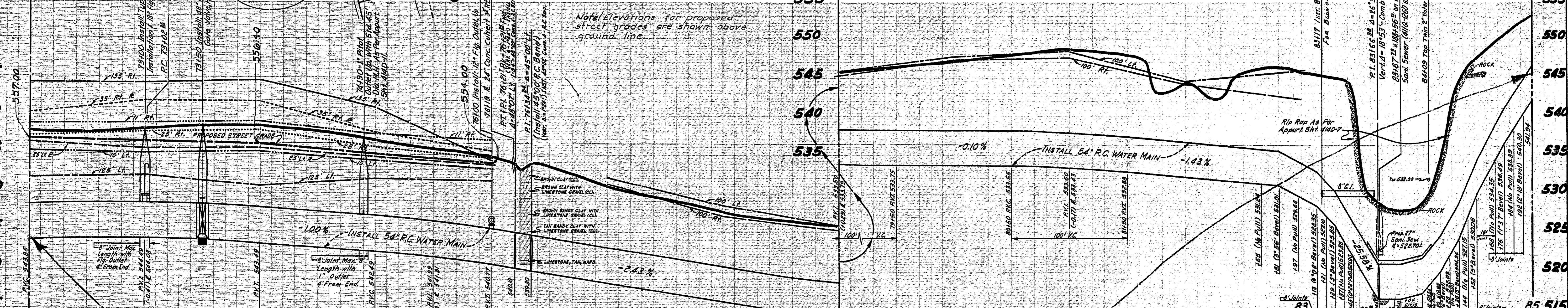


**NOTE!!**  
ALL TEES, BENDS, BEVELS, & PLUGS TO BE BLOCKED WITH CONC AS PER APPURT. SHEET 414-15 OR AS DIRECTED BY FIELD ENGINEER.

**END REVISION**  
P.I. 76134 24  
A=45°00' Lt.  
INSTALL:  
1-3/4" x 12" C.I. Pipe  
1-12" Valve R.H.  
1-12" Plugs  
1-12" x 6" C.I. Box

**STA. 76100**  
Remove 1-12" Blind Flange  
Install 1-12" Valve

**NOTE!!**  
ALL R.C. FLANGE OUTLET CONNECTIONS ON CONCRETE PRESSURE PIPES MADE TO C.I. FLANGE FITTINGS, SHALL BE INSULATED AS SHOWN ON APPURT. SHEET 414-11.



**CONTRACT NO 61-45**

129985 LINEAR FT. OF 54" DIA DOUBLE-WRAP PRESTRESSED CONCRETE CYLINDER PIPE - CLASS 150 DR  
129985 LINEAR FT. OF 54" DIA PRESTRESSED REINFORCED CONCRETE EMBEDDED CYLINDER PIPE - CLASS 150  
CLASS 3 EMBEDMENT

B.M. Sh. W.B.M. On N Side of Conc Bridge Over WHITE ROCK CREEK AT BELT LINE RD. Elevation = 558.10  
T.B.M. R.R. Spike In 28' Hackberry 42' Rt. of Sta. 76157, N Side of WINWOOD ST 1800' S. of BELT LINE RD. Elevation = 553.60

**54" WATER MAIN**  
IN BELT LINE RD. & WINWOOD RD.  
FROM INWOOD RD. TO DULLES RD.  
DALLAS CITY WATERWORKS  
CITY OF DALLAS, TEXAS

DESIGN	DRAWN	DATE	SCALE	NOTES	FILE	NO.
JACK D. GAMBELL	PAUL FARRIN	10-60	1"=100'	PROJ. 685W-540A	685W-540A	1