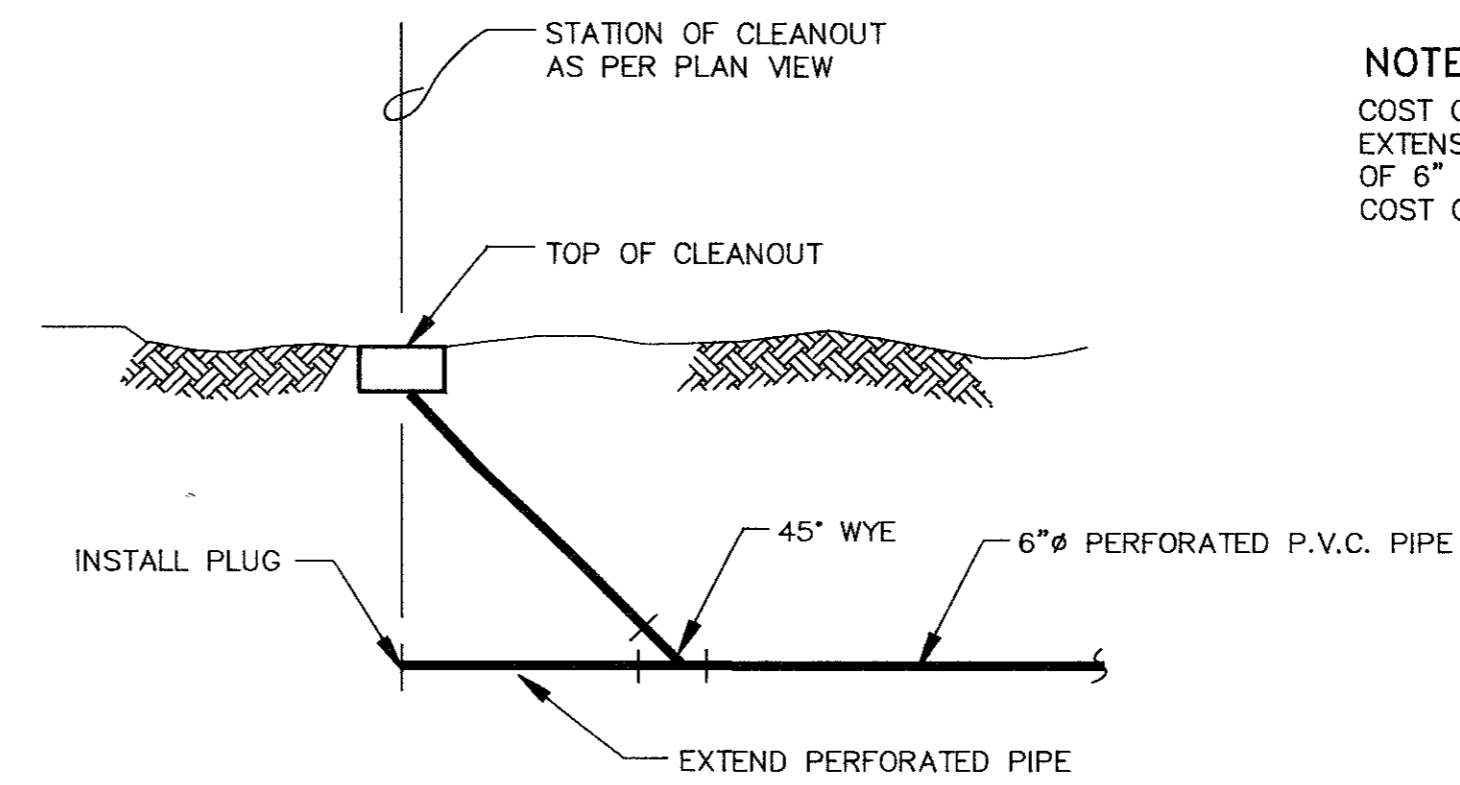


CONCRETE PAVEMENT REPLACEMENT DETAIL

N.T.S.

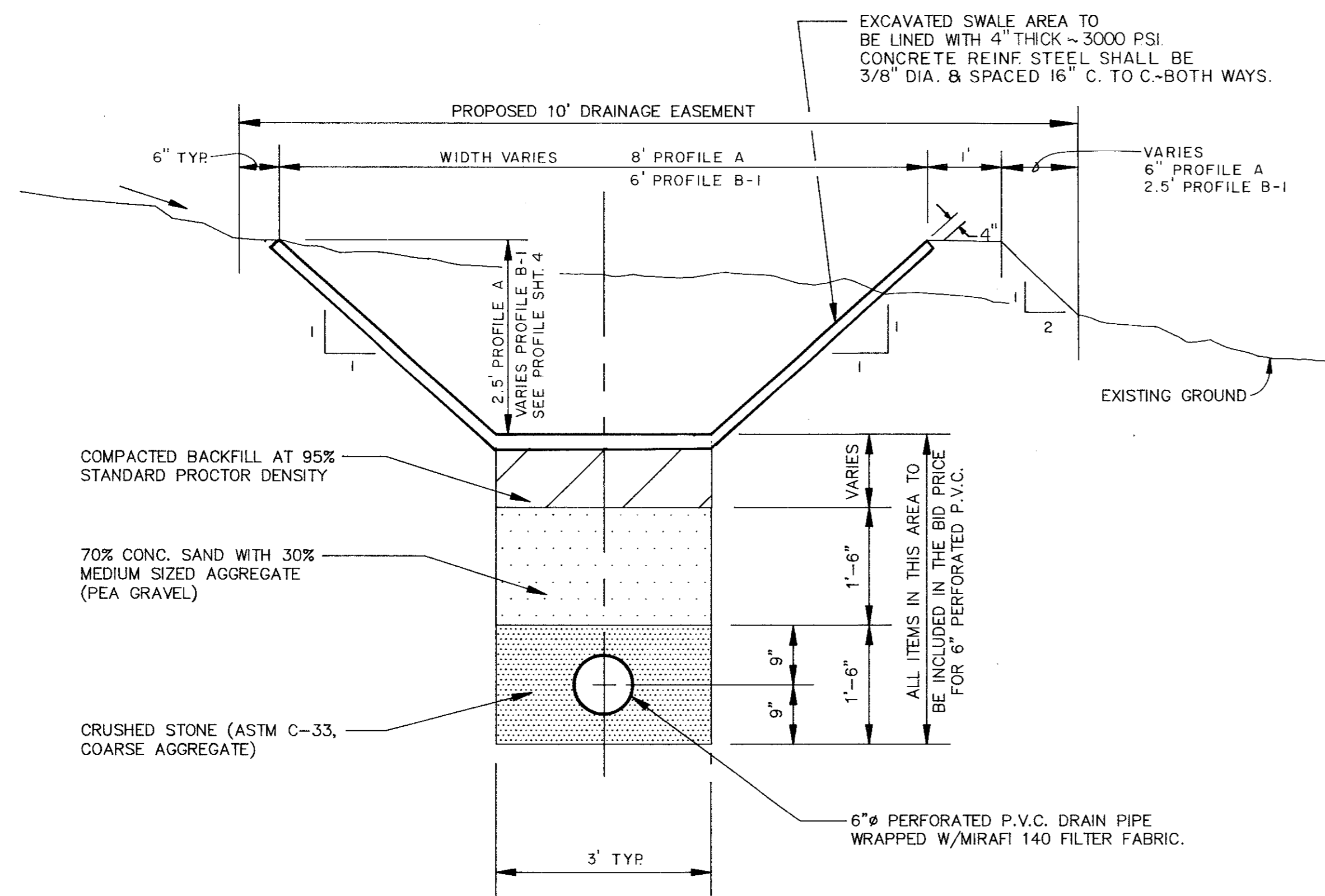
PAVEMENT REPLACEMENT NOTES:
 1. SUBGRADE SHALL BE COMPACTED TO 95% STANDARD PROCTOR DENSITY.
 2. ALL CONCRETE SHALL BE CUT AT EXISTING JOINTS AS DIRECTED BY THE OWNER.



FRENCH DRAIN CLEANOUT DETAIL

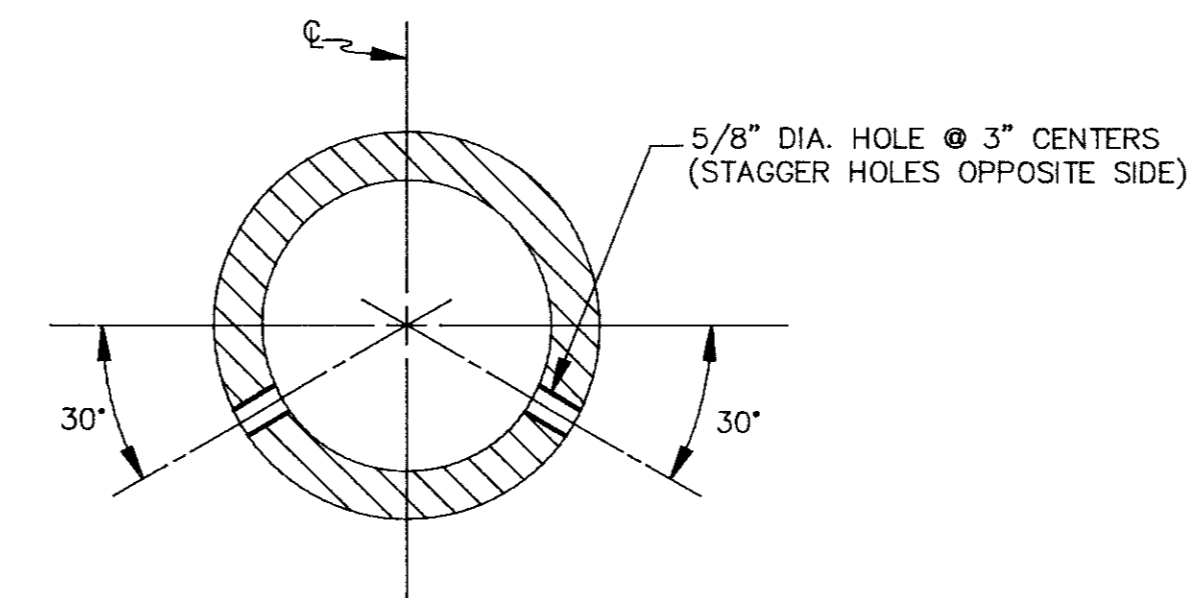
N.T.S.

NOTE:
 COST OF 6\"/>



SWALE AND FRENCH DRAIN TYPICAL SECTION

N.T.S.



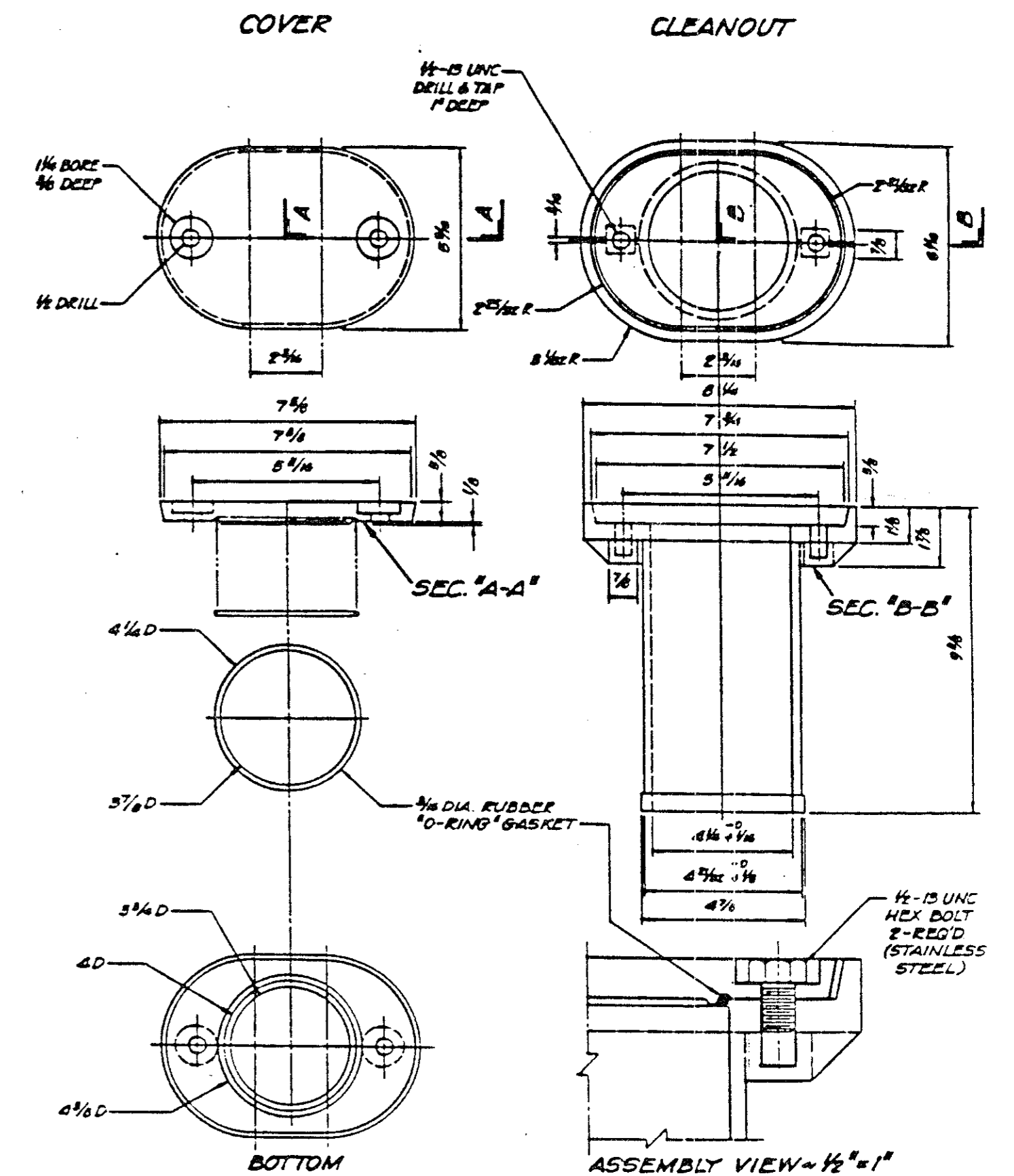
PERFORATED P.V.C. PIPE DETAIL

N.T.S.

NOTES:

- P.V.C. PIPE SHALL BE SCHEDULE 80 WITH SOLVENT WELDED COUPLING JOINTS.
- CONTRACTOR SHALL PROVIDE AND MAINTAIN ADEQUATE DEWATERING EQUIPMENT TO REMOVE AND DISPOSE OF ALL SURFACE AND GROUND WATER ENTERING EXCAVATIONS, TRENCHES OR OTHER PARTS OF THE WORK. NO SEPARATE PAY ITEMS SHALL BE PROVIDED.
- BACKFILL MATERIAL OVER AND AROUND THE P.V.C. PIPE SHALL BE LIGHTLY HAND TAMPED.

1. ALL DIMENSIONS ARE IN INCHES.
 2. MATERIAL TO BE P.V.C.

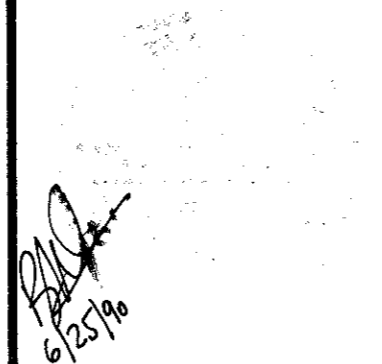


P.V.C. CLEANOUT DETAIL

N.T.S.

NO.	REVISION	BY	DATE

DESIGNED BY: E.H.&A.
 DRAWN BY: E.H.&A.
 CHECKED BY: B. GRANTHAM
 SCALE: AS NOTED
 DATE: MAY 1990



eh ESPEY, HUSTON & ASSOCIATES, INC.
 Engineering & Environmental Consultants
 17811 Waterview Parkway Dallas, Texas 75252
 (214) 669-9600

CONSTRUCTION DETAILS
 WINNWOOD/BELLBROOK DRAINAGE
 for
 THE TOWN OF ADDISON

SHEET NO. 6
 OF 6 SHEETS
 JOB NO. 12552