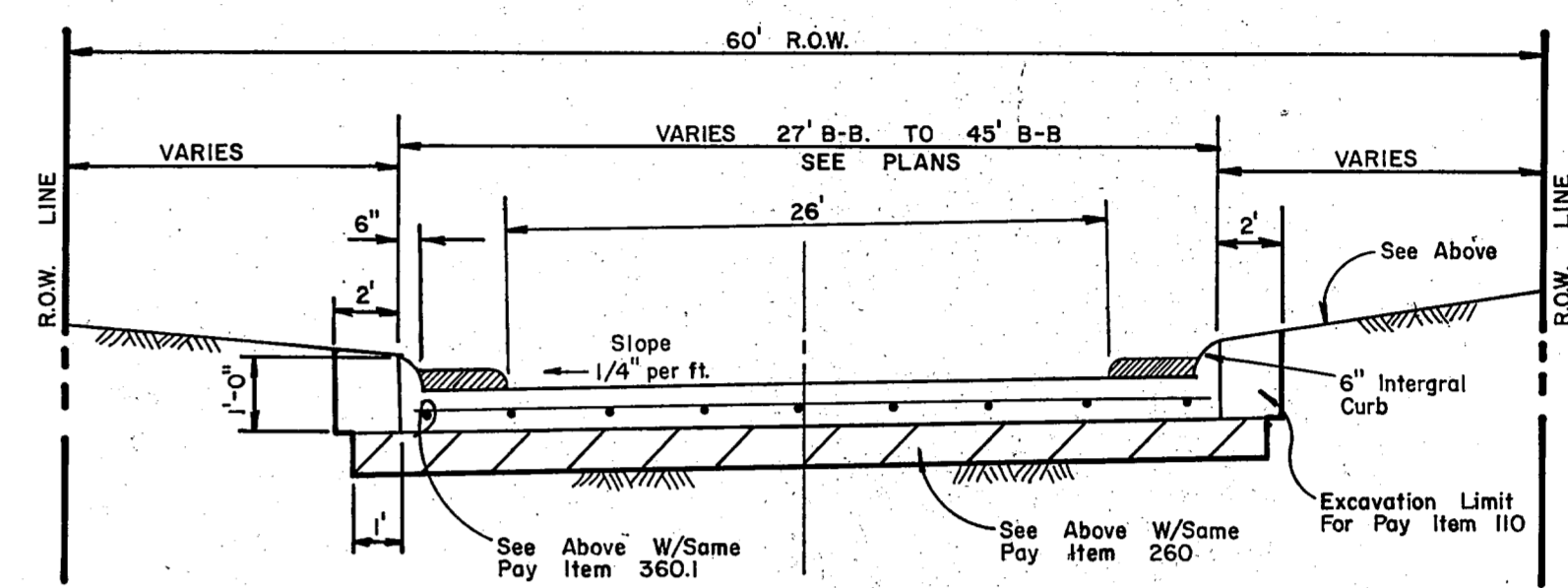


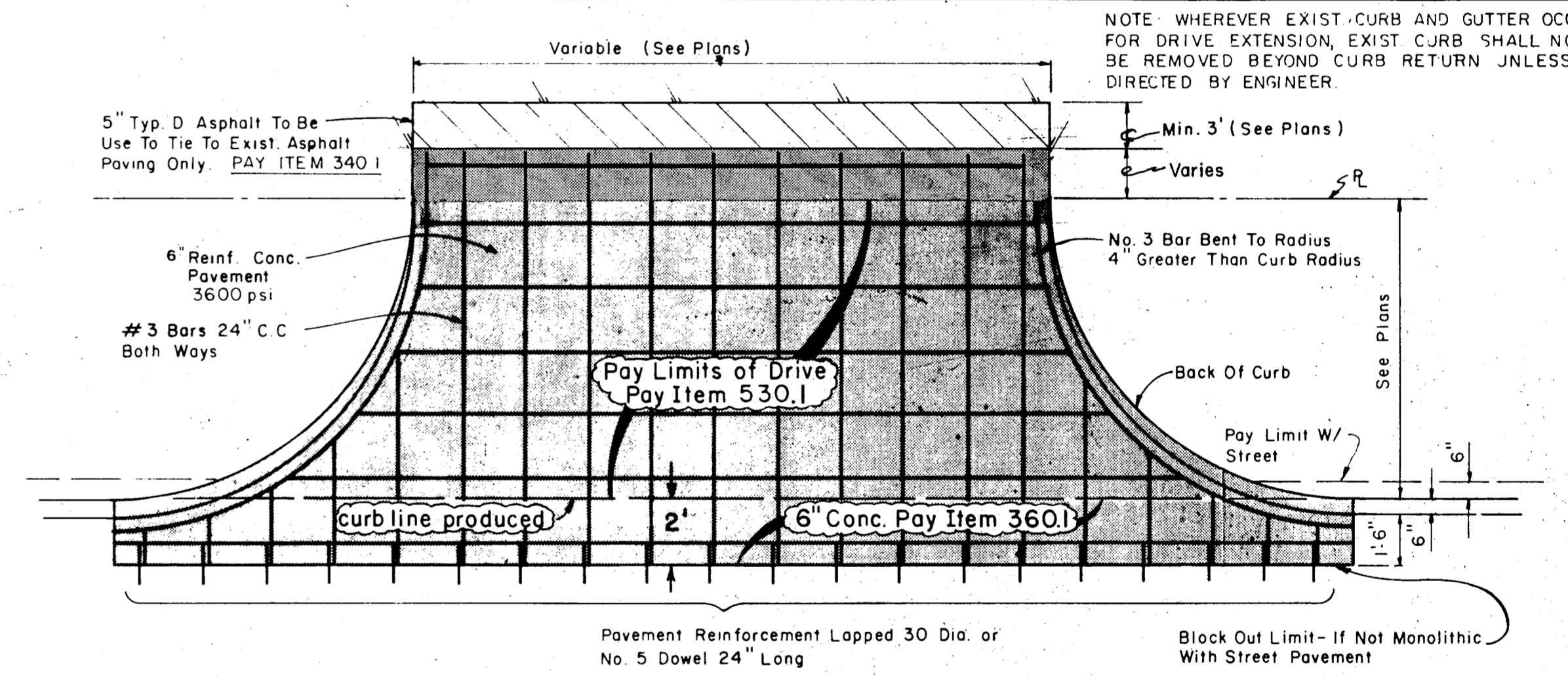
TYPICAL PAVING SECTION
STA. 4+00 TO STA. 27+00

NOTES: 1. Backfill material NOT A SEPARATE PAY ITEM. Material acquired from excavation may be used if approved by Engineer.
2. Right (West) T.C. Elevation Higher than Left (East) T.C. Elevation, See Plans



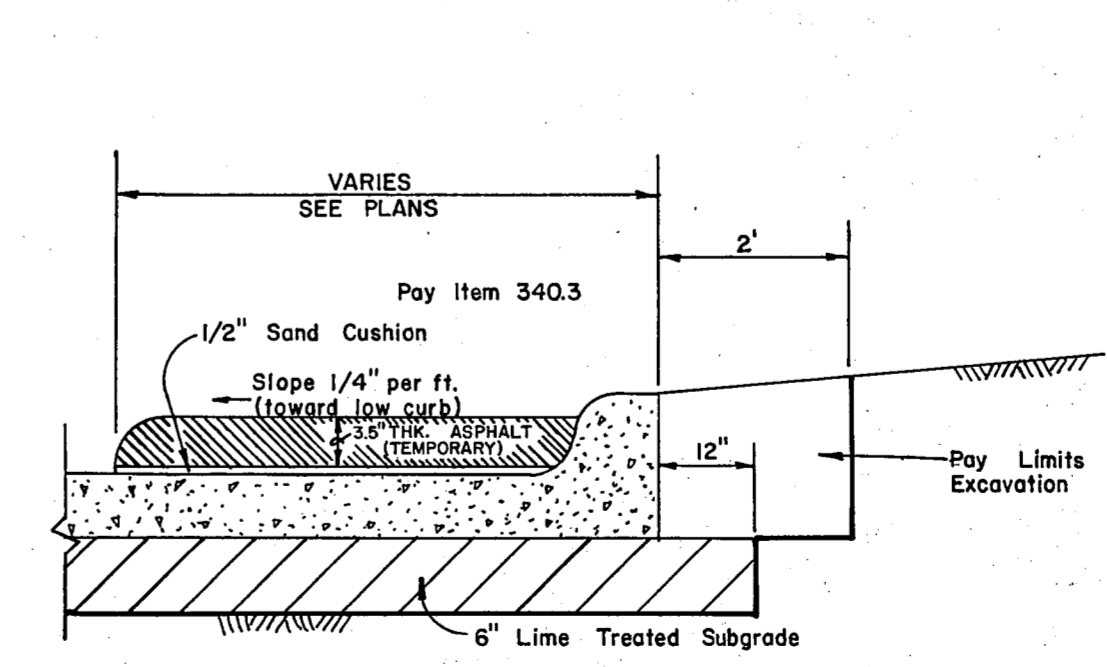
TRANSITION
STA. 2+45.55 TO STA. 4+00

NOTES: 1. Backfill material NOT A SEPARATE PAY ITEM. Material acquired from excavation may be used if approved by Engineer.
2. Right (West) T.C. Elevation Higher than Left (East) T.C. Elevation, See Plans

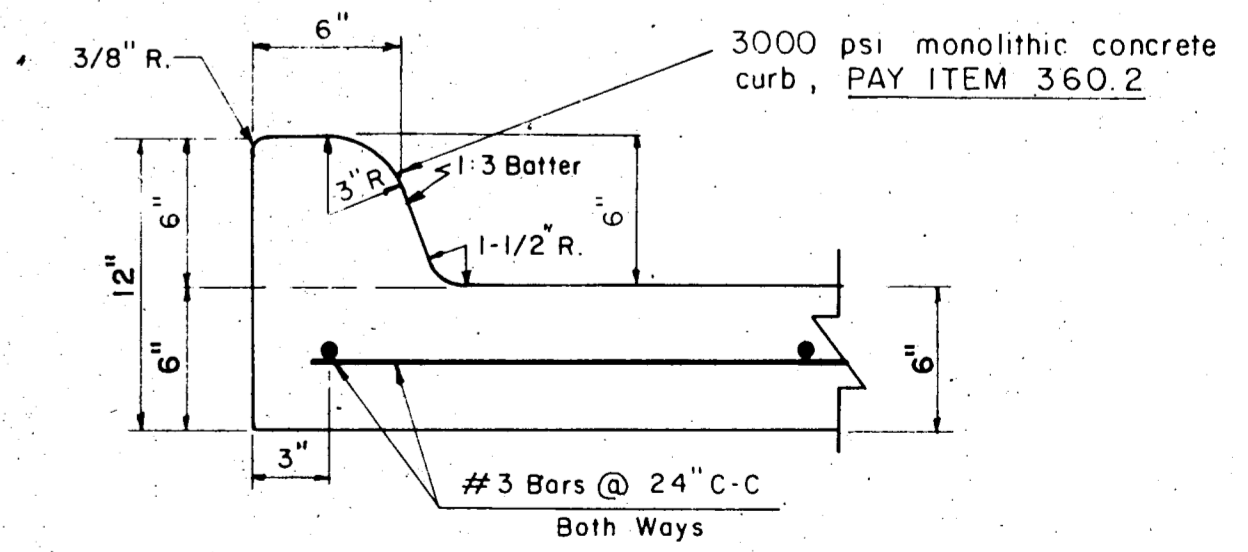


DRIVEWAY PAVING DETAIL

NOTE: WHEREVER EXIST CURB AND GUTTER OCCURS FOR DRIVE EXTENSION, EXIST CURB SHALL NOT BE REMOVED BEYOND CURB RETURN UNLESS DIRECTED BY ENGINEER



TEMPORARY ASPHALT CURB
STA. 2+45.55 TO STA. 4+00



6" INTEGRAL CURB & GUTTER DETAIL

RECORD DRAWING

TOWN OF ADDISON DALLAS COUNTY, TEXAS			
WINNWOOD/CELESTIAL ROAD IMPROVEMENTS			
PAVING DETAILS A			
GINN, INC. Consulting Engineers Dallas, Texas			
DESIGNED - H.K.	DRAWN - S.M.M.	DATE - OCT., 1985	JOB No. 265
APPROVED - H.G.	CHECKED - G.F.	SCALE - NONE	SHEET 12 OF 29