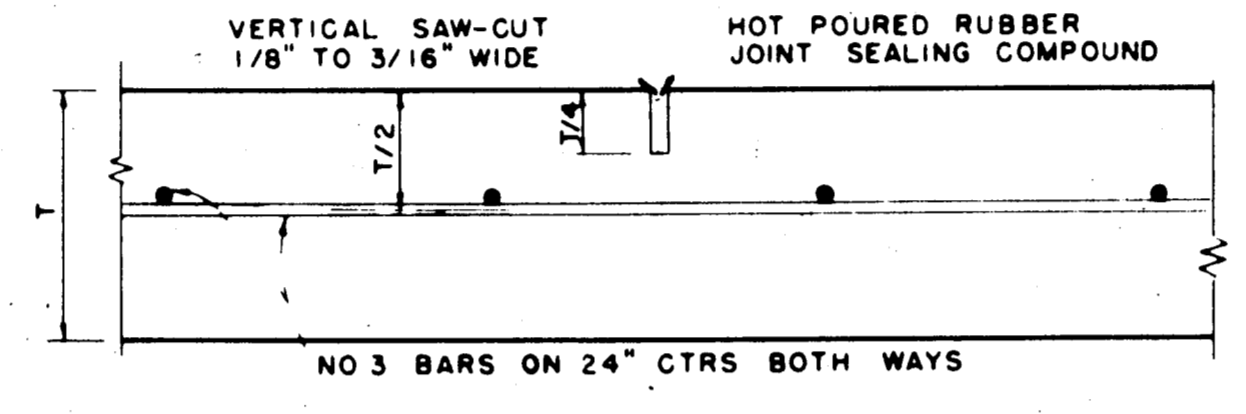


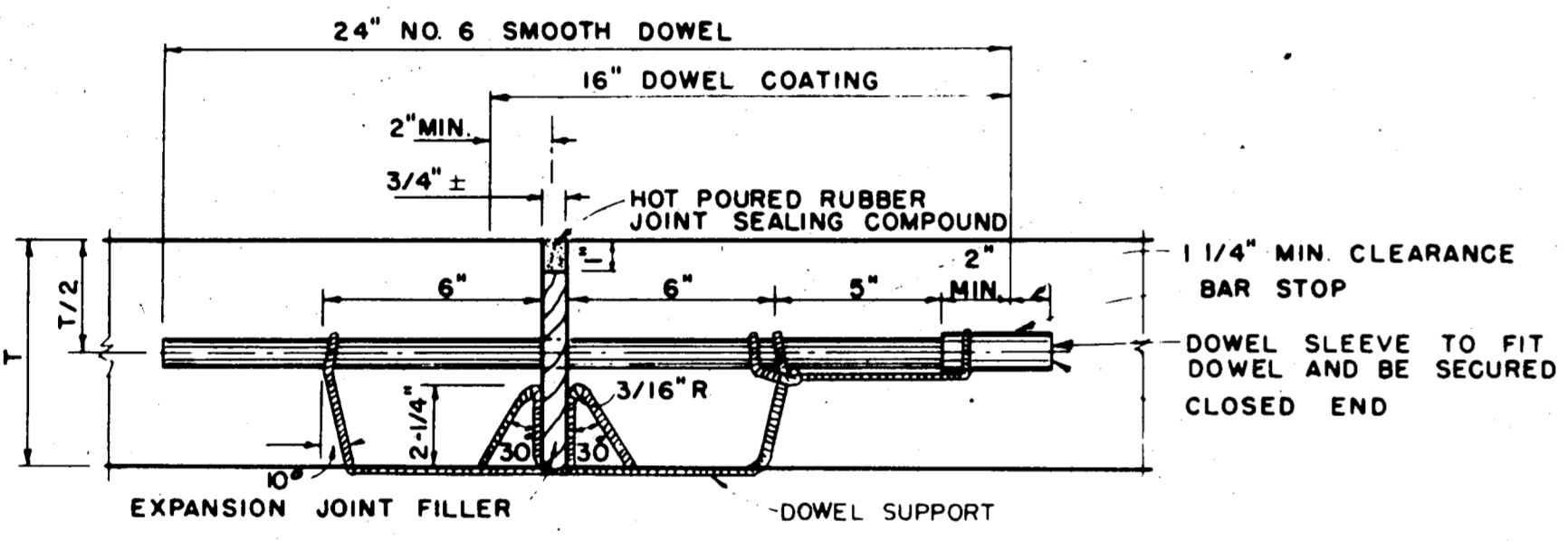
SPACING DIAGRAM FOR JOINTS

IDENTICAL FOR STREETS (CONCRETE PAVEMENT OR BASE) AND ALLEYS EXCEPT THAT EXPANSION JOINTS FOR ALLEYS SHALL BE PLACED AT THE END OF THE RETURN IN LINE WITH THE PROPERTY LINE. SPACING OF EXPANSION JOINTS SHALL NOT EXCEED 600 FEET.

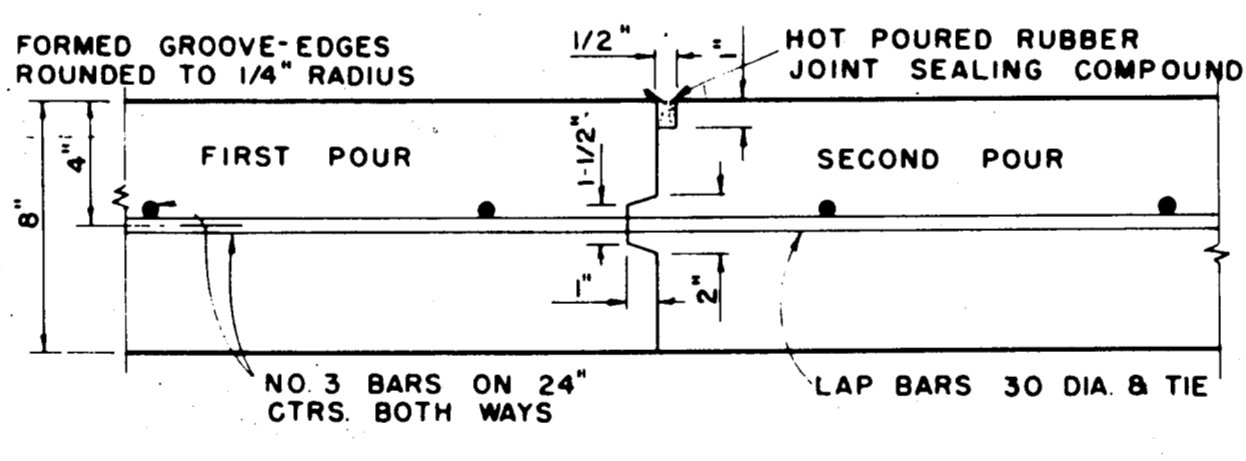


SAWED DUMMY JOINT

IDENTICAL FOR STREETS AND ALLEYS EXCEPT ALLEY LONGITUDINAL REINFORCEMENT BARS

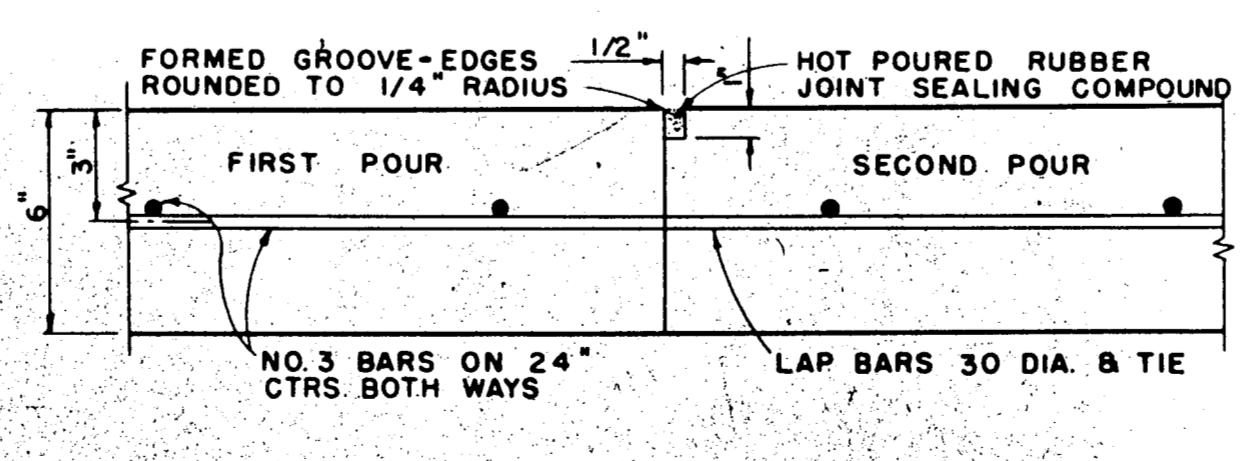


TRANSVERSE EXPANSION JOINT
IDENTICAL FOR STREETS & ALLEYS



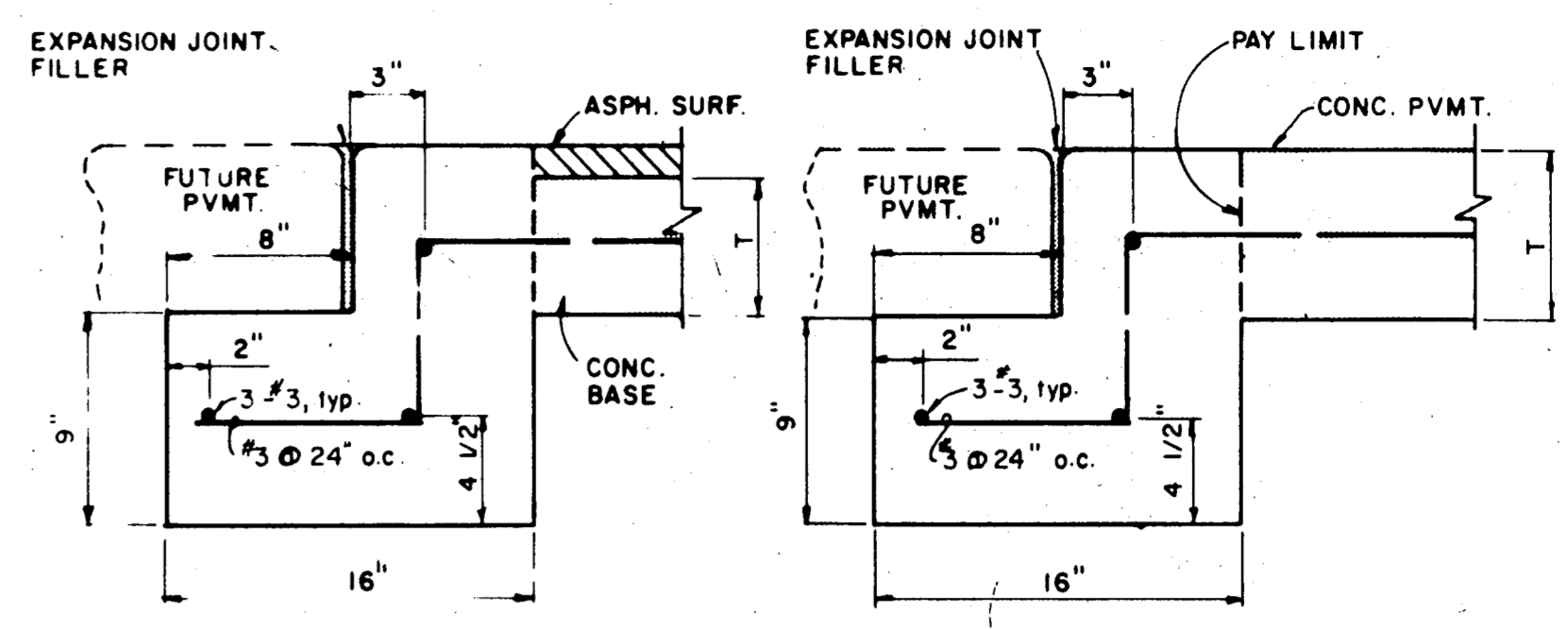
CONSTRUCTION JOINT

FOR 8" THICKNESS PAVEMENT OR BASE



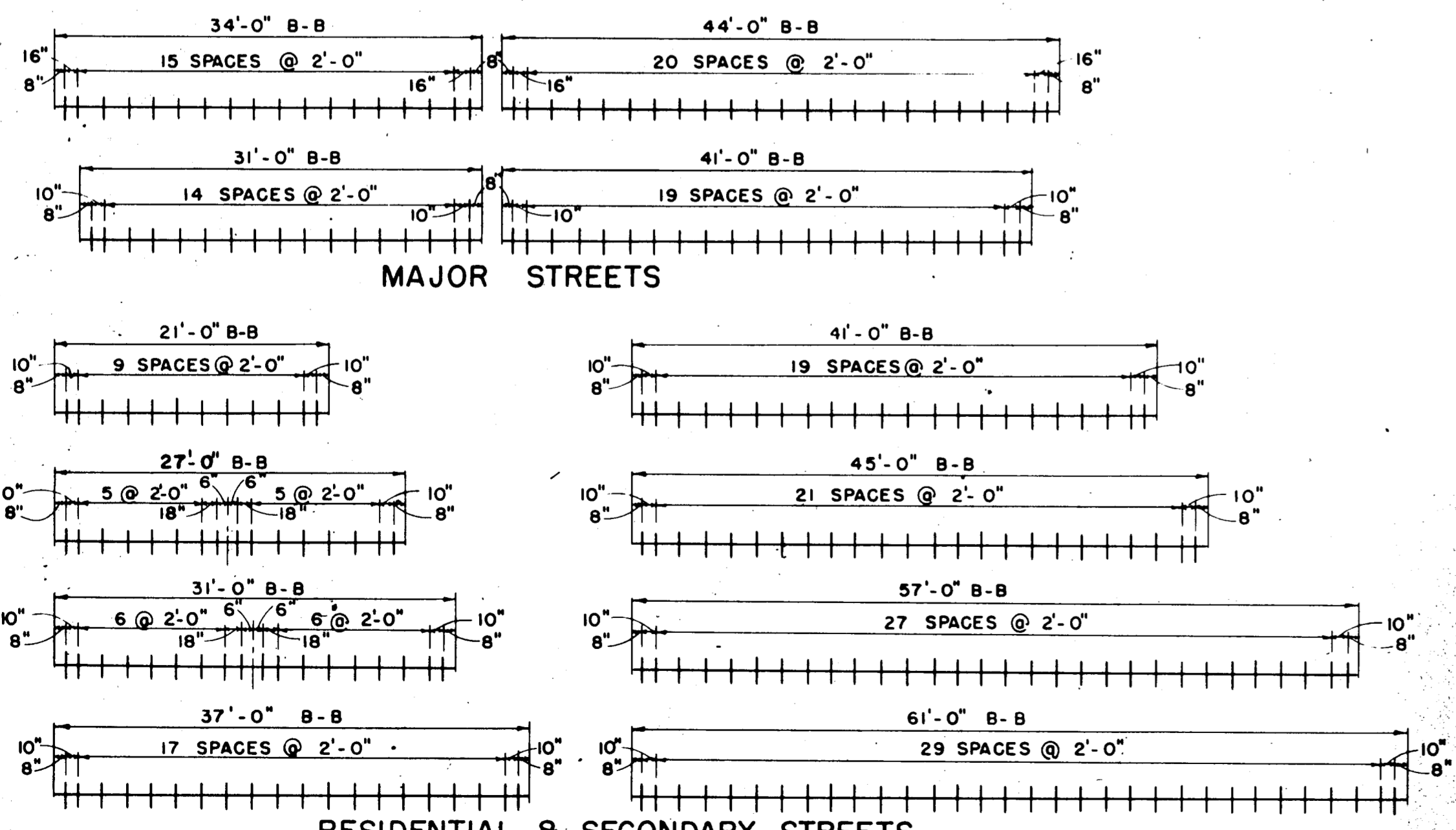
CONSTRUCTION JOINT

FOR 6" THICKNESS PAVEMENT OR BASE
IDENTICAL FOR STREETS AND ALLEYS EXCEPT ALLEY LONGITUDINAL REINFORCEMENT BARS

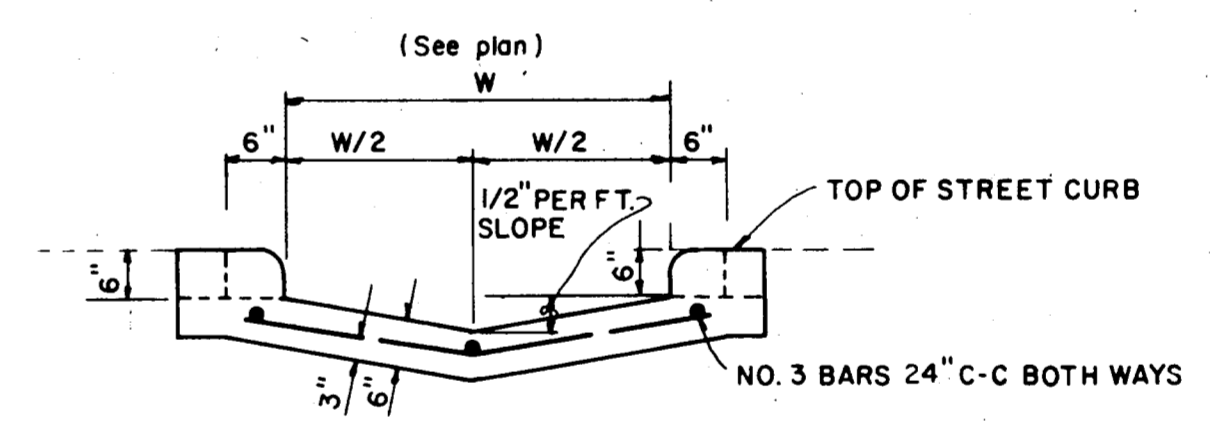


STREET HEADER

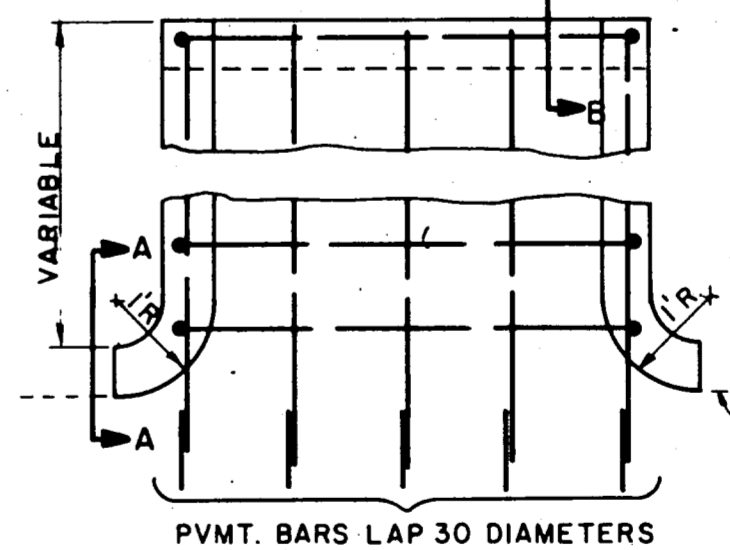
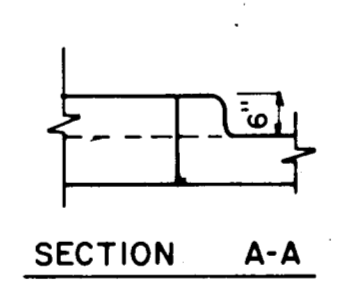
PAVEMENT BARS TO BE BENT DOWN INTO HEADER. HEADER AND PAVEMENT TO BE MONOLITHIC.



SPACING DIAGRAM FOR DOWELS AT EXPANSION JOINTS

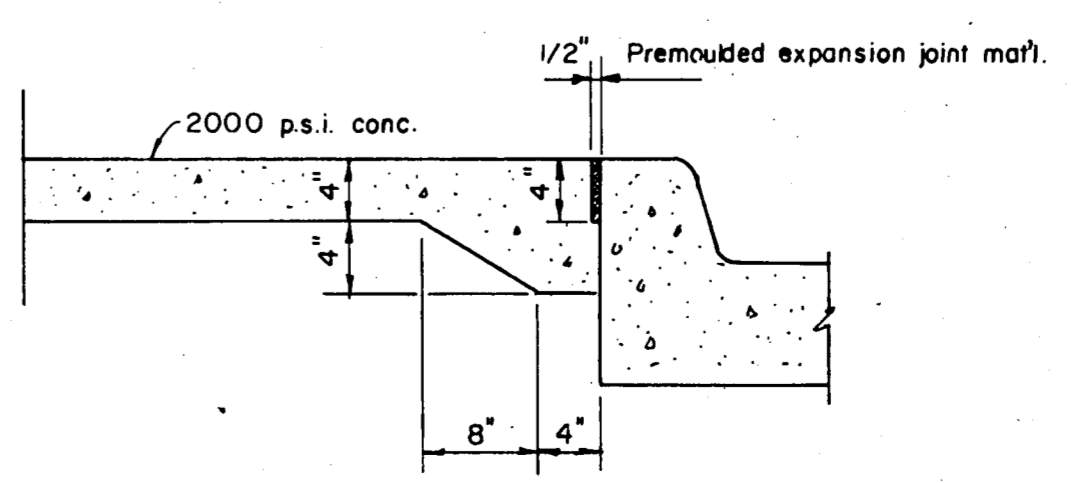


SECTION AT CURB FACE



PLAN

FLUME



NON-REINFORCED MEDIAN PAVEMENT

RECORD DRAWING

TOWN OF ADDISON
DALLAS COUNTY, TEXAS
WINNWOOD/CELESTIAL RD. IMPROVEMENTS

PAVING DETAILS B

GINN, INC.
Consulting Engineers Dallas, Texas

DESIGNED-H.K. DRAWN-S.M.M. DATE- OCT., 1985 JOB No. 265
APPROVED-H.G. CHECKED-G.F. SCALE- NONE SHEET 13 OF 29